



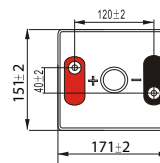
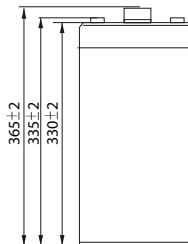
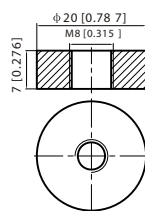
Physical Specification	
Part Number:	CXL350-2
Length:	171 ± 2 mm (6.69 inches)
Width:	151 ± 2 mm (5.91 inches) 330 ± 2 mm (12.91 inches)
Total Height (with terminal):	365 ± 2 mm (13.78 inches)
Approx Weight:	Approx 20.5 Kg (45.19 lbs)

Specifications

	Nominal Voltage	2V	
	Nominal Capacity (10HR)	350AH	
Terminal Type	Standard Terminal	T11	
	Optional Terminal	-	
Container Material	Standard Option	ABS	
	Flame Retardant Option (FR)	ABS (UL94:VO)	
Rated Capacity	374.5 AH/18.7A	(20hr, 1.80V/cell, 25°C / 77°F)	
	350.0 AH/35.0A	(10hr, 1.80V/cell, 25°C / 77°F)	
	304.5 AH/60.9A	(5hr, 1.75V/cell, 25°C / 77°F)	
	273.0 AH/91.0A	(3hr, 1.75V/cell, 25°C / 77°F)	
	217.0 AH/217.0A	(1hr, 1.60V/cell, 25°C / 77°F)	
Max Discharge Current	2800A (5s)		
Internal Resistance	Approx 0.8mΩ		
Discharge Characteristics	Operating Temp. Range	Discharge: -15 ~ 50°C (5 ~ 122°F)	
		Charge: 0 ~ 40°C (5 ~ 104°F)	
		Storage: -15 ~ 40°C (5 ~ 104°F)	
	Nominal Operating Temp. Range	25 ± 3°C (77 ± 5°F)	
	Cycle Use	Initial Charging Current less than 105.0A. Voltage 2.4V ~ 2.5V at 25°C (77°F) Temp. Coefficient -5mV/°C	
	Standby Use	No limit on Initial Charging Current Voltage 2.25V ~ 2.3V at 25°C (77°F) Temp. Coefficient -3mV/°C	
	Capacity affected by Temperature	40°C (104°F)	103%
25°C (77°F)		100%	
0°C (32°F)		86%	
Design Floating Life at 20°C	15 Years		
Self Discharge	Canbat batteries may be stored for up to 6 months at 25°C(77°F) and then a refresh charge is required. For higher temperatures the time interval will be shorter.		

Dimensions

■ T11 Terminal



ALL DATA IS SUBJECT TO CHANGE WITHOUT NOTICE

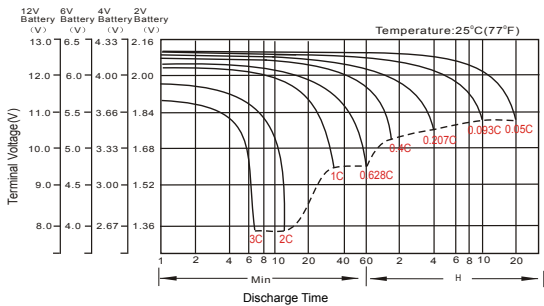
Constant Current Discharge (Amperes) at 25 °C (77 °F)

F.V/Time	10min	15min	20min	30min	45min	1h	2h	3h	4h	5h	6h	8h	10h	20h
1.85V/cell	409.5	344.4	305.6	253.4	195.5	167.3	108.3	81.4	66.7	56.1	49.2	39.5	33.9	18.1
1.80V/cell	468.6	386.7	337.8	275.2	210.9	176.6	116.4	87.5	70.9	59.5	52.1	41.5	35.0	18.7
1.75V/cell	532.2	435.9	373.3	299.1	230.1	192.5	121.1	91.0	73.4	60.9	53.7	42.9	35.9	19.2
1.70V/cell	601.0	483.6	412.1	326.5	247.8	203.7	127.6	95.8	76.7	64.4	56.3	44.7	37.3	19.7
1.65V/cell	645.5	517.8	438.4	344.6	262.3	210.7	132.3	99.6	79.7	66.4	58.3	46.2	38.4	20.3
1.60V/cell	710.1	567.1	476.2	367.7	272.5	217.0	135.6	102.2	81.4	68.0	59.5	47.0	39.2	20.6

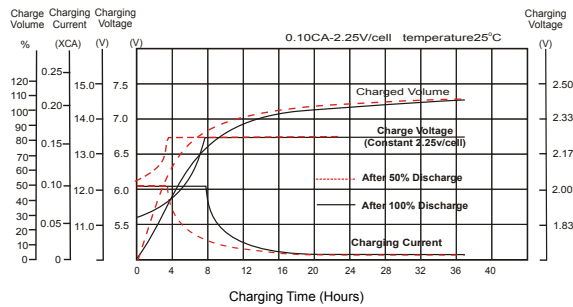
Constant Power Discharge (Watts) at 25 °C (77 °F)

F.V/Time	10min	15min	20min	30min	45min	1h	2h	3h	4h	5h	6h	8h	10h	20h
1.85V/cell	764.6	649.5	582.1	488.0	379.8	326.1	212.5	160.4	131.8	111.2	97.7	78.7	67.8	36.2
1.80V/cell	864.7	719.7	634.2	522.1	406.5	342.3	227.0	171.3	139.3	117.3	103.1	82.6	69.9	37.4
1.75V/cell	966.6	801.3	694.2	562.7	439.2	371.5	235.2	177.5	143.7	119.6	106.0	85.1	71.6	38.3
1.70V/cell	1067.2	876.7	760.6	610.9	471.3	391.9	247.2	186.5	149.8	126.3	110.9	88.6	74.3	39.3
1.65V/cell	1135.6	931.6	803.1	639.5	494.4	402.4	254.8	193.2	155.1	129.9	114.4	91.4	76.3	40.4
1.60V/cell	1221.2	1003.6	863.1	677.7	511.0	412.3	260.0	197.2	158.1	132.6	116.4	92.8	77.8	41.0

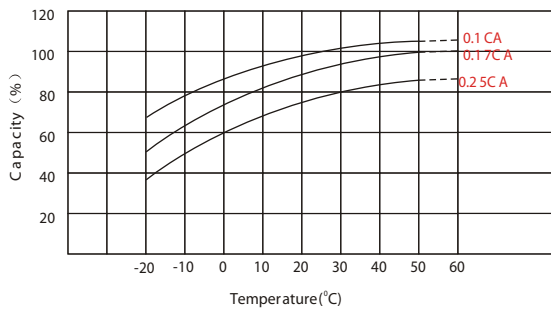
Discharge Characteristics



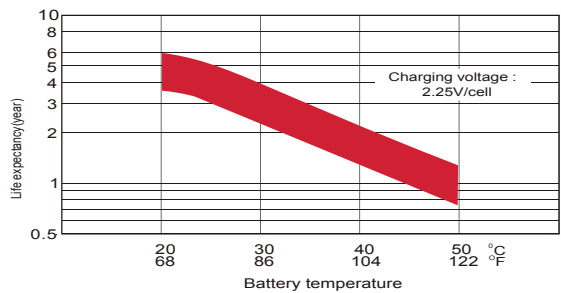
Float Charging Characteristics



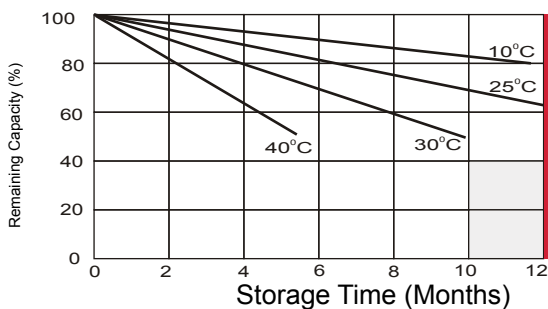
Temperature Effects in Relation to Battery Capacity



Effect of Temperature on Long Term Float Life



Self Discharge Characteristics



A

No supplementary required
(Carryout supplementary charge before use if 100% capacity is required.)

B

Supplementary charge required before use. Optional charging way as below:
 1. Charged for above 3 days at limited current 0.25CA and constant voltage 2.25V/cell.
 2. Charged for above 20 hours at limited current 0.25CA and constant voltage 2.25V/cell.
 3. Charged for 8 ~ 10 hours at limited current 0.05 CA.

C

Supplementary charge may often fail to recover the capacity.
The battery should never be left standing till this is reached.

ALL DATA IS SUBJECT TO CHANGE WITHOUT NOTICE