

# CXL28-12

12V 28AH

Extended Life



## CXL28-12

Awaiting Image

## Physical Specification

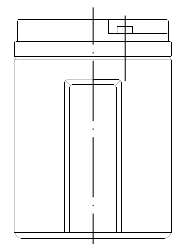
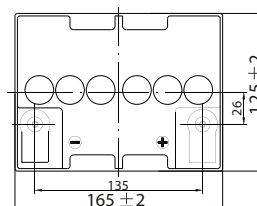
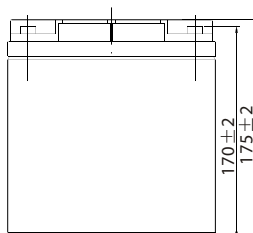
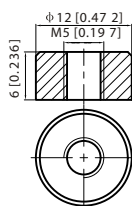
Part Number:	<b>CXL28-12</b>
Length:	<b>165 ± 3 mm (6.50 inches)</b>
Width:	<b>125 ± 3 mm (4.92 inches)</b>
Container Height:	<b>175 ± 3 mm (6.89 inches)</b>
Total Height (with terminal):	<b>175 ± 3 mm (6.89 inches)</b>
Approx Weight:	<b>Approx 9.5 Kg (20.9 lbs)</b>

## Specifications

	Nominal Voltage	12V	
	Nominal Capacity (10HR)	28AH	
Terminal Type	Standard Terminal	T12	
	Optional Terminal	T10 / T3	
Container Material	Standard Option	ABS	
	Flame Retardant Option (FR)	ABS (UL94:VO)	
Rated Capacity	29.7AH/1.48A	(20hr, 1.80V/cell, 25°C / 77°F)	
	28.0 AH/2.80A	(10hr, 1.80V/cell, 25°C / 77°F)	
	24.3 AH/4.86A	(5hr, 1.75V/cell, 25°C / 77°F)	
	22.1AH/7.37A	(3hr, 1.75V/cell, 25°C / 77°F)	
	17.2 AH/17.2A	(1hr, 1.60V/cell, 25°C / 77°F)	
Max Discharge Current	420A (5s)		
Internal Resistance	Approx 12.0mΩ		
Discharge Characteristics	Operating Temp. Range	Discharge: -15 ~ 50°C (5 ~ 122°F)	
		Charge: 0 ~ 40°C (32 ~ 104°F)	
		Storage: -15 ~ 40°C (5 ~ 104°F)	
	Nominal Operating Temp. Range	25 ± 3°C (77 ± 5°F)	
	Cycle Use	Initial Charging Current less than 8.4A. Voltage 14.4V ~ 15.0V at 25°C (77°F) Temp. Coefficient -30mV/°C	
	Standby Use	No limit on Initial Charging Current Voltage 13.5V ~ 13.8V at 25°C (77°F) Temp. Coefficient -20mV/°C	
Capacity affected by Temperature	40°C (104°F)	103%	
	25°C (77°F)	100%	
	0°C (32°F)	86%	
Design Floating Life at 20°C	15 Years		
Self Discharge	Canbat batteries may be stored for up to 6 months at 25°C (77°F) and then a refresh charge is required. For higher temperatures the time interval will be shorter.		

## Dimensions

### T12 Terminal



ALL DATA IS SUBJECT TO CHANGE WITHOUT NOTICE

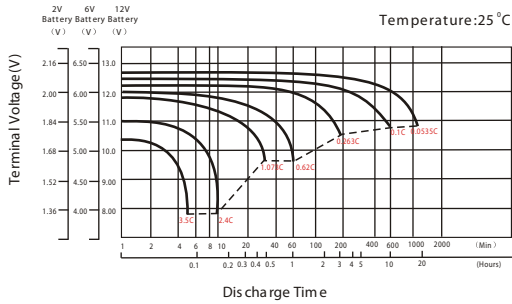
## Constant Current Discharge (Amperes) at 25 °C (77°F)

F.V/Time	10min	15min	20min	30min	45min	1h	2h	3h	4h	5h	6h	8h	10h	20h
1.85V/cell	36.1	30.1	25.7	21.0	15.9	13.3	8.48	6.73	5.45	4.41	3.87	3.09	2.64	1.47
1.80V/cell	46.1	36.4	30.4	24.8	18.5	14.9	9.27	7.24	5.82	4.73	4.15	3.28	2.80	1.48
1.75V/cell	50.7	39.8	32.7	25.7	19.2	15.6	9.61	7.37	5.96	4.86	4.26	3.34	2.83	1.50
1.70V/cell	55.3	42.5	34.3	26.8	19.9	16.1	10.0	7.58	6.11	4.98	4.35	3.39	2.86	1.53
1.65V/cell	59.6	45.2	36.5	28.2	20.4	16.6	10.3	7.90	6.32	5.12	4.45	3.44	2.91	1.55
1.60V/cell	64.8	48.3	38.9	29.8	21.3	17.2	10.6	8.14	6.52	5.29	4.54	3.47	2.95	1.56

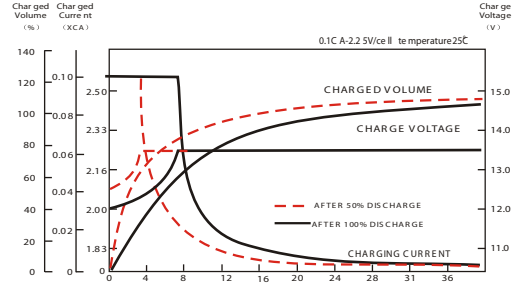
## Constant Power Discharge (Watts) at 25 °C (77°F)

F.V/Time	10min	15min	20min	30min	45min	1h	2h	3h	4h	5h	6h	8h	10h	20h
1.85V/cell	68.0	57.3	49.3	40.7	31.1	26.1	16.8	13.4	10.9	8.79	7.74	6.22	5.32	2.96
1.80V/cell	85.9	68.3	57.5	47.3	35.8	29.1	18.2	14.3	11.5	9.40	8.27	6.58	5.63	2.99
1.75V/cell	92.9	73.7	61.2	48.7	36.9	30.3	18.8	14.5	11.8	9.62	8.47	6.68	5.68	3.01
1.70V/cell	99.0	77.6	63.9	50.5	38.2	31.2	19.5	14.9	12.0	9.84	8.63	6.77	5.73	3.07
1.65V/cell	105.8	81.9	67.4	52.8	38.8	32.0	19.9	15.4	12.4	10.1	8.79	6.85	5.84	3.10
1.60V/cell	112.3	86.2	71.0	55.4	40.2	33.0	20.5	15.8	12.7	10.4	8.96	6.91	5.89	3.11

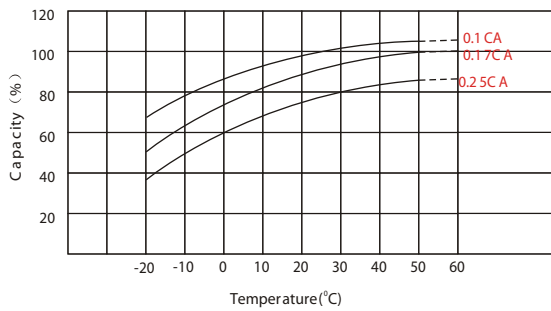
### Discharge Characteristics



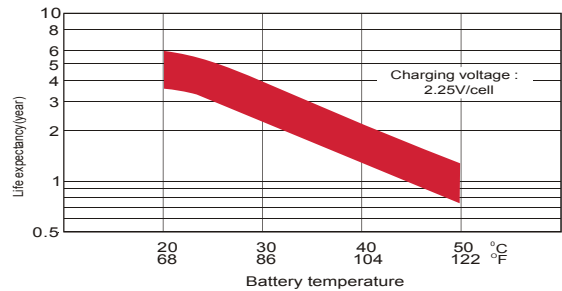
### Float Charging Characteristics



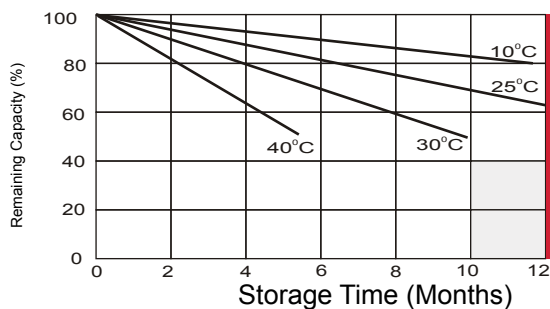
### Temperature Effects in Relation to Battery Capacity



### Effect of Temperature on Long Term Float Life



### Self Discharge Characteristics



- A**
- B**
- C**

**A** No supplementary required  
(Carryout supplementary charge before use if 100% capacity is required.)

**B** Supplementary charge required before use. Optional charging way as below:  
 1. Charged for above 3 days at limited current 0.25CA and constant voltage 2.25V/cell.  
 2. Charged for above 20 hours at limited current 0.25CA and constant voltage 2.25V/cell.  
 3. Charged for 8 ~ 10 hours at limited current 0.05 CA.

**C** Supplementary charge may often fail to recover the capacity.  
The battery should never be left standing till this is reached.

ALL DATA IS SUBJECT TO CHANGE WITHOUT NOTICE