

CHR 200-12

12V 206AH

High Rated



CHR 200-12

Awaiting Image

Physical Specification

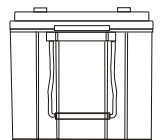
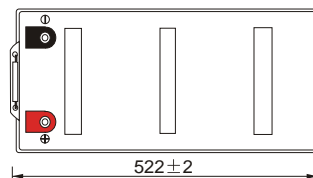
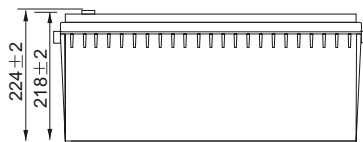
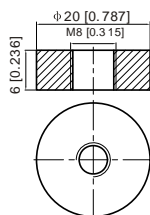
Part Number	CHR 200-12
Length	522 ± 2 mm
Width	240 ± 2 mm
Container Height	218 ± 2 mm
Total Height (with terminal)	224 ± 2 mm
Approx Weight	Approx 61.50 kg

Specifications

	Nominal Voltage	12V
	Nominal Capacity (20HR)	206AH
Terminal Type	Standard Terminal	T11
	Optional Terminal	-
Container Material	Standard Option	ABS
	Flame Retardant Option (FR)	ABS (UL94:VO)
Rated Capacity	20hr, 1.80V/cell, 25°C	206.0 AH/20.60A
	10hr, 1.80V/cell, 25°C	20.0 AH/25.00A
	5hr, 1.75V/cell, 25°C	174.50 AH/34.90A
	3hr, 1.75V/cell, 25°C	158.40 AH/52.80A
	1hr, 1.60V/cell, 25°C	136.0 AH/136.00A
Max Discharge Current	2000.00 (5s)	
Internal Resistance	~2.700mΩ	
Discharge Characteristics	Operating Temp. Range	Discharge: -15 ~ 50°C
		Charge: 0 ~ 40°C
		Storage: -15 ~ 40°C
	Nominal Operating Temp. Range	25 ± 3°C
	Cycle Use	Initial Charging Current less than 60.00A Voltage 14.40V ~ 15.00V at 25°C Temp. Coefficient -30mV/°C
	Standby Use	No limit on Initial Charging Current Voltage 13.50V ~ 13.80V at 25°C Temp. Coefficient -20mV/°C
Capacity affect by Temperature	40°C	103%
	25°C	100%
	0°C	86%
Design Floating Life at 20°C	12 Years	
Self Discharge	Canbat batteries may be stored for up to 6 months at 25°C(77°F) and then a refresh charge is required. For higher temperatures the time interval will be shorter.	

Dimensions

T11 Terminal



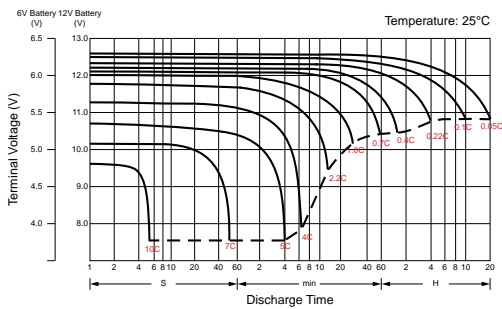
Constant Power Discharge Characteristics at 25°C / 77° F, Unit: A

F.V (V/Cell)	10 min	15 min	20 min	30 min	45 min	1h	2h	3h	4h	5h	6h	8h	10h	20h
1.85V/cell	321.6	277.6	237.0	181.6	138.1	113.8	66.7	48.7	38.5	32.2	28.6	23.9	20.0	10.3
1.80V/cell	351.6	296.8	246.6	190.8	143.2	120.8	71.1	51.7	40.6	34.0	30.1	25.0	20.6	10.7
1.75V/cell	375.6	314.1	262.8	198.4	148.3	124.0	72.9	52.8	41.8	34.9	30.7	25.3	20.9	10.8
1.70V/cell	409.2	335.4	274.8	204.8	153.3	128.0	74.2	54.1	42.7	35.5	31.3	25.5	21.2	10.9
1.67V/cell	439.2	359.5	288.0	210.4	156.3	132.0	75.7	54.7	43.5	36.1	31.7	25.8	21.4	11.0
1.60V/cell	459.6	374.3	296.4	216.0	160.3	136.0	77.0	55.9	44.3	36.6	32.1	26.0	21.5	11.1

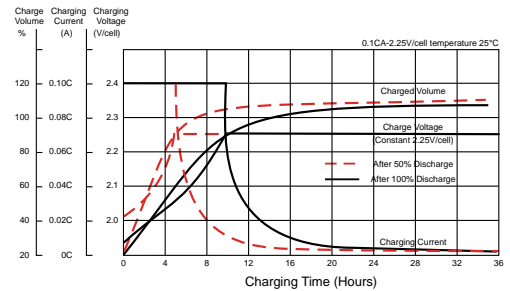
Constant Current Discharge Characteristics at 25°C / 77° F, Unit: W

F.V (V/Cell)	10 min	15 min	20 min	30 min	45 min	1h	2h	3h	4h	5h	6h	8h	10h	20h
1.85V/cell	609.4	536.6	461.7	356.1	272.6	225.7	132.7	97.2	77.1	64.7	57.6	48.3	40.5	20.9
1.80V/cell	661.4	570.2	477.7	372.4	281.1	238.5	141.1	102.9	81.0	68.2	60.5	50.4	41.6	21.6
1.75V/cell	701.2	599.7	506.7	385.7	290.2	244.2	144.2	104.8	83.2	69.6	61.5	50.8	41.9	21.7
1.70V/cell	757.8	636.2	527.1	396.5	299.2	251.3	146.3	107.0	84.8	70.7	62.4	51.0	42.4	21.8
1.67V/cell	805.5	675.8	548.4	405.0	303.5	258.1	148.8	108.0	86.1	71.8	63.2	51.4	42.7	22.0
1.60V/cell	834.2	697.8	559.6	412.6	309.3	264.7	150.7	109.8	87.4	72.5	63.8	51.8	43.0	22.1

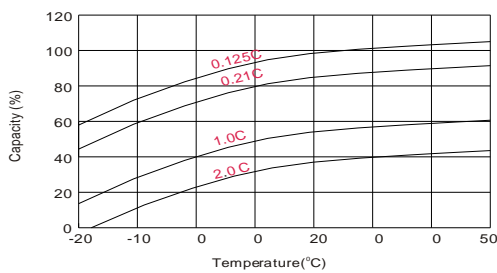
Discharge Characteristics



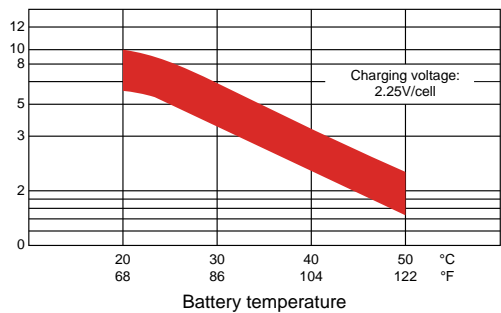
Float Charging Characteristics



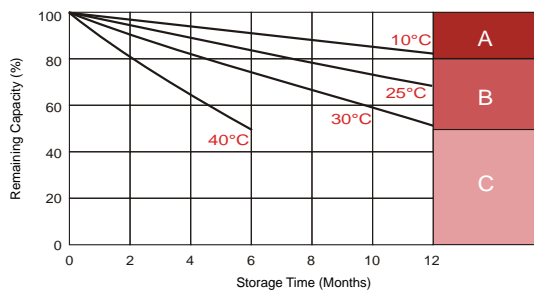
Temperature Effects in Relation to Battery Capacity



Effect of Temperature on Long Term Float Life



Self Discharge Characteristics



- A** No supplementary charge required
(Carry out supplementary charge before use if 100% capacity is required.)
- B** Supplementary charge required before use. Optional charging way as below:
1. Charged for above 3 days at limited current 0.25CA and constant voltage 2.25V/cell.
2. Charged for above 20 hours at limited current 0.25CA and constant voltage 2.45V/cell.
3. Charged for 8-10 hours at limited current 0.05CA.
- C** Supplementary charge may often fail to recover the capacity.
The battery should never be left standing till this is reached.