

CFT100-12

12V 100AH

Front Terminal



CFT100-12



Physical Specification

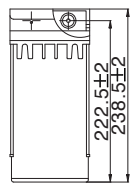
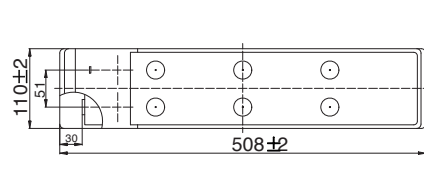
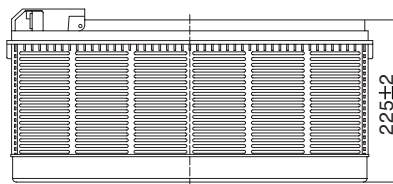
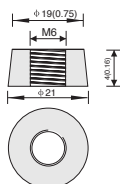
Part Number	CFT100-12
Length	508 ± 2 mm (20.13")
Width	110 ± 2 mm (4.33")
Container Height	238.5 ± 2 mm (9.39")
Total Height (with terminal)	238.5 ± 2 mm (9.39")
Approx Weight	35 kg (77 lb)

Specifications

	Nominal Voltage	12V
	Nominal Capacity (10HR)	103.8AH
Terminal Type	Standard Terminal	T13
Container Material	Standard Option	ABS
	Flame Retardant Option (FR)	UL94-V0
Rated Capacity	20hr, 1.80V/cell, 25°C	110.0 AH/5.50A
	10hr, 1.80V/cell, 25°C	103.8 AH/103.8A
	5hr, 1.75V/cell, 25°C	89.0AH/17.8A
	3hr, 1.75V/cell, 25°C	78.3AH/26.1A
	1hr, 1.60V/cell, 25°C	69.2 AH/69.2A
Max Discharge Current	1000A (5s)	
Internal Resistance	Approx 4.3m Ω	
Discharge Characteristics	Operating Temp. Range	Discharge: -15 ~ 50°C
		Charge: 0 ~ 40°C
		Storage: -15 ~ 40°C
	Nominal Operating Temp. Range	25 ± 3°C
	Cycle Use	Initial Charging Current less than 30.0A Voltage 14.4V ~ 15.0V Temp. Coefficient -30mV/°C
	Standby Use	No limit on Initial Charging Current Voltage 13.5V ~ 13.8V Temp. Coefficient -20mV/°C
Capacity affect by Temperature	40°C	103%
	25°C	100%
	0°C	86%
Design Floating Life at 20°C	12+ Years	
Self Discharge	Canbat batteries may be stored for up to 6 months at 25°C(77°F) and then a refresh charge is required. For higher temperatures the time interval will be shorter.	

Dimensions

T13 Terminal



ALL DATA IS SUBJECT TO CHANGE WITHOUT NOTICE

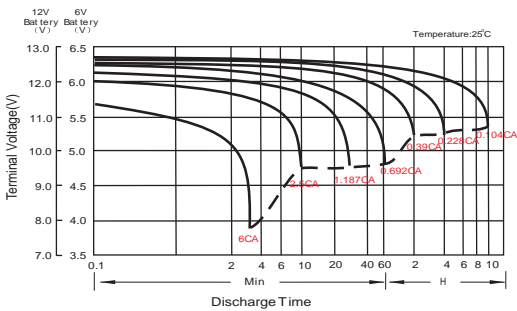
Constant Current Discharge (Amperes) at 20°C

F.V/ Tim e	10min	15min	20min	30min	45min	1h	2h	3h	4h	5h	6h	8h	10h	20h
1.85V/cell	1739	1450	1244	97.6	75.7	61.5	36.7	26.4	21.2	17.6	15.3	11.90	9.92	5.26
1.80V/cell	1972	1616	1377	106.8	81.4	65.7	38.7	28.1	22.3	18.5	16.1	12.50	10.38	5.50
1.75V/cell	2164	1749	1469	112.2	84.5	68.0	39.4	28.6	22.9	18.9	16.3	12.70	10.49	5.58
1.70V/cell	2315	1842	1529	115.5	86.5	68.9	40.0	28.8	23.0	19.0	16.5	12.80	10.56	5.62
1.67V/cell	2395	1888	1560	117.0	86.8	69.2	40.1	28.9	23.1	19.1	16.6	12.90	10.65	5.65
1.60V/cell	251.8	196.0	163.0	119.9	89.1	71.0	40.8	29.3	23.4	19.3	16.7	12.98	10.80	5.68

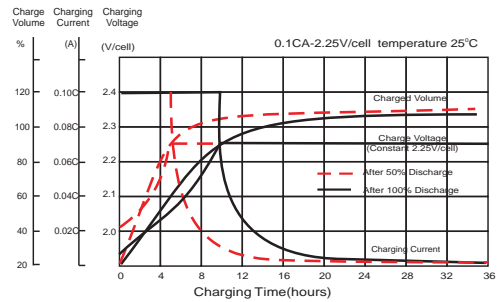
Constant Power Discharge (Watts) at 20°C

F.V/ Tim e	10min	15min	20min	30min	45min	1h	2h	3h	4h	5h	6h	8h	10h	20h
1.85V/cell	324.8	273.4	237.0	187.9	147.0	119.9	72.0	52.0	41.9	34.8	30.3	23.7	19.8	10.52
1.80V/cell	363.9	300.7	258.5	202.5	156.9	127.3	75.4	55.0	43.8	36.4	31.7	24.9	20.7	10.98
1.75V/cell	393.0	321.4	273.3	211.1	161.4	131.2	76.6	55.7	44.8	37.1	32.1	25.2	20.9	11.14
1.70V/cell	411.0	333.9	282.2	216.1	164.5	132.5	77.5	56.2	45.0	37.2	32.5	25.4	21.0	11.21
1.67V/cell	423.6	340.8	286.8	218.4	164.5	132.8	77.6	56.1	45.1	37.3	32.6	25.5	21.2	11.25
1.60V/cell	433.0	346.9	295.4	221.0	167.0	134.9	78.2	56.5	45.4	37.6	32.7	25.6	21.4	11.30

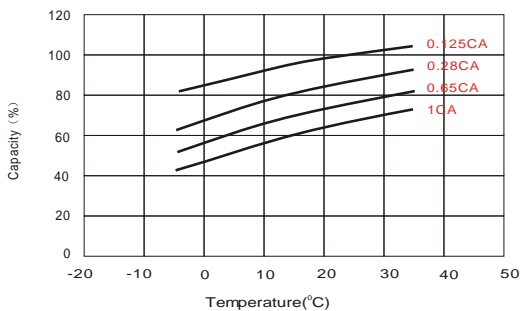
Discharge Characteristics



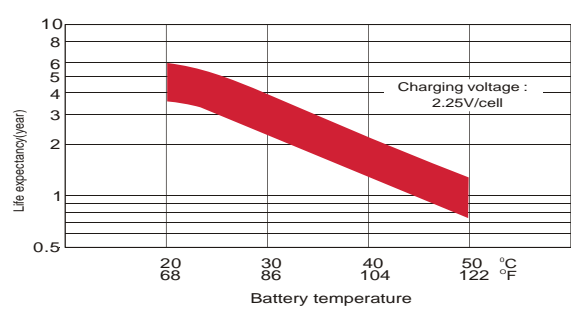
Float Charging Characteristics



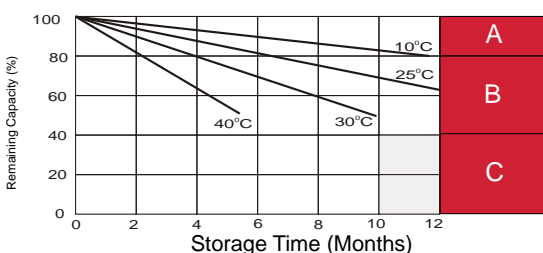
Temperature Effects in Relation to Battery Capacity



Effect of Temperature on Long Term Float Life



Self Discharge Characteristics



- A** No supplementary charge required (Carry out supplementary charge before use if 100% capacity is required.)
- B** Supplementary charge required before use. Optional charging way as below:
 - 1.Charged for above 3 days at limited current 0.25CA and constant voltage 2.25V/cell.
 - 2.Charged for above 20hours at limited current 0.25CA and constant voltage 2.45V/cell.
 - 3.Charged for 8~10hours at limited current 0.05CA.
- C** Supplementary charge may often fail to recover the capacity. The battery should never be left standing till this is reached.