



**CBL 700-2**

Awaiting Image

**Physical Specification**

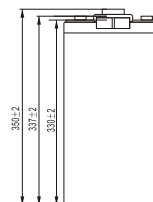
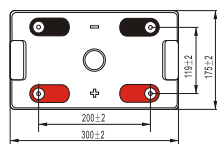
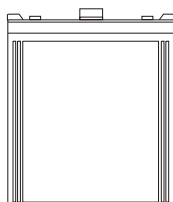
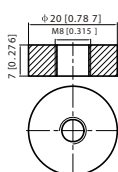
Part Number:	<b>CBL700-2</b>
Length:	<b>300 ± 2 mm (11.81 inches)</b>
Width:	<b>175 ± 2 mm (6.89 inches)</b>
Container Height:	<b>330 ± 2 mm (12.99 inches)</b>
Total Height (with terminal):	<b>350 ± 2 mm (13.78 inches)</b>
Approx Weight:	<b>Approx 38.1 kg (84.0 lbs)</b>

**Specifications**

	Normal Voltage	2V
	Normal Capacity (20HR)	700AH
<b>Terminal Type</b>	Standard Terminal	T11
	Optional Terminal	-
<b>Container Material</b>	Standard Option	ABS
	Flame Retardant Option (FR)	UL94:VO
<b>Rated Capacity</b>	736.0 AH/36.8A	(20hr, 1.80V/cell, 25°C / 77°F)
	700.0 AH/70.0A	(10hr, 1.80V/cell, 25°C / 77°F)
	598.5 AH/119.7A	(5hr, 1.75V/cell, 25°C / 77°F)
	525.0 AH/175.0A	(3hr, 1.75V/cell, 25°C / 77°F)
	420.0 AH/420.0A	(1hr, 1.60V/cell, 25°C / 77°F)
<b>Max Discharge Current</b>	5600A (5s)	
<b>Internal Resistance</b>	Approx 0.55mΩ	
<b>Discharge Characteristics</b>	Operating Temp. Range	Discharge: -15 ~ 50°C (5 ~ 122°F)
		Charge: 0 ~ 40°C (5 ~ 104°F)
		Storage: -15 ~ 40°C (5 ~ 104°F)
	Nominal Operating Temp. Range	25 ± 3°C (77 ± 5°F)
	Cycle Use	Initial Charging Current less than 210.0A. Voltage 2.4V ~ 2.5V at 25°C (77°F) Temp. Coefficient -5mV/°C
	Standby Use	No limit on Initial Charging Current Voltage 2.25V ~ 2.3V at 25°C (77°F) Temp. Coefficient -3mV/°C
	Capacity affected by Temperature	40°C (104°F) 103% 25°C (77°F) 100% 0°C (32°F) 86%
<b>Design Floating Life at 20°C</b>	10 Years	
<b>Self Discharge</b>	Canbat batteries may be stored for up to 6 months at 25°C(77F) and then a refresh charge is required. For higher temperatures the time interval will be shorter.	

**Dimensions**

**T11 Terminal**



ALL DATA IS SUBJECT TO CHANGE WITHOUT NOTICE

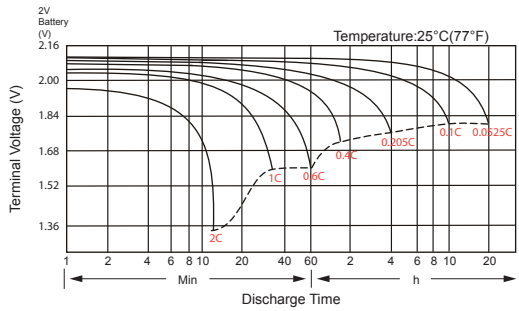
### Constant Current Discharge (Amperes) at 25°C (77°F)

F.V/Time	5 min	10 min	15 min	20 min	30 min	45 min	1h	2h	3h	4h	5h	6h	8h	10h	20h
1.85V/cell	816.7	719.6	632.5	559.9	468.0	380.1	310.2	207.9	158.9	128.1	109.7	96.5	78.2	66.9	35.5
1.80V/cell	\	842.1	720.8	627.6	514.2	408.8	330.5	218.8	172.2	132.5	114.1	100.6	82.0	70.0	36.8
1.75V/cell	\	965.0	815.5	695.5	559.3	442.4	355.6	232.1	175.0	139.8	119.7	105.4	84.1	71.4	37.2
1.70V/cell	\	\	901.3	764.8	607.7	472.6	376.5	245.0	182.7	145.6	124.5	109.1	86.8	73.2	38.0
1.65V/cell	\	\	959.0	808.4	636.8	491.2	391.2	253.1	188.5	150.0	127.9	111.1	88.4	74.3	38.7
1.60V/cell	\	\	\	901.3	696.5	531.4	420.0	265.7	196.5	156.3	133.9	116.0	91.7	76.7	39.8

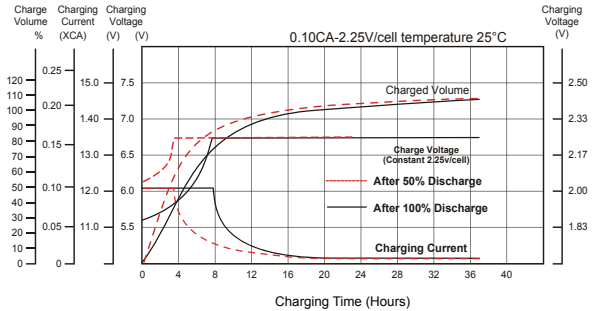
### Constant Power Discharge (Watts) at 25°C (77°F)

F.V/Time	5 min	10 min	15 min	20 min	30 min	45 min	1h	2h	3h	4h	5h	6h	8h	10h	20h
1.85V/cell	1501.4	1336.4	1186.6	1061.0	896.6	734.4	601.5	405.8	311.3	251.8	216.1	190.7	155.2	133.0	70.6
1.80V/cell	\	1545.6	1334.1	1171.9	970.2	783.7	637.4	424.2	335.5	258.9	223.8	197.9	162.2	139.0	73.1
1.75V/cell	\	1742.9	1490.9	1286.3	1046.6	840.2	682.7	448.3	339.6	272.4	234.0	206.7	166.0	141.6	73.9
1.70V/cell	\	\	1625.1	1404.0	1131.0	894.2	720.4	472.3	353.9	283.1	243.0	213.7	171.2	145.0	75.4
1.65V/cell	\	\	1715.8	1472.9	1175.4	921.1	743.2	485.0	363.6	290.5	248.8	216.9	173.8	147.1	76.6
1.60V/cell	\	\	\	1624.4	1276.7	991.0	793.8	506.7	377.2	301.8	259.5	225.8	180.0	151.6	78.8

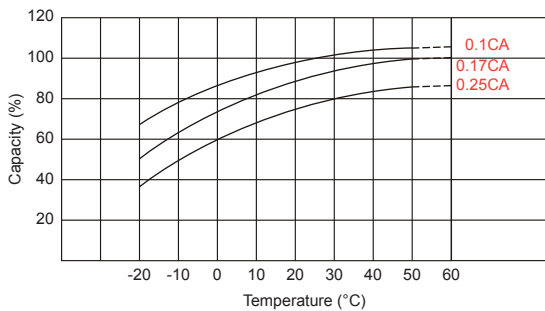
### Discharge Characteristics



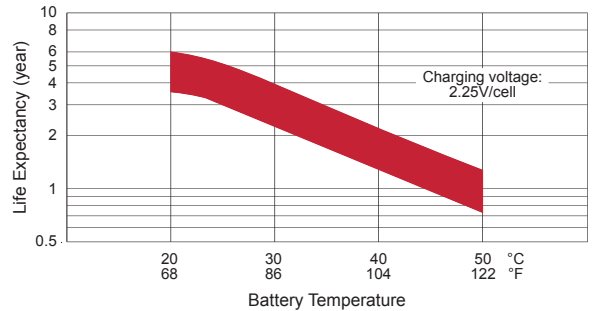
### Float Charging Characteristics



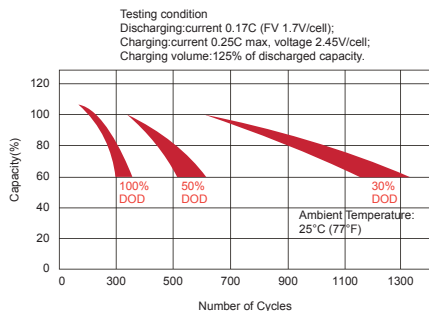
### Temperature Effects in Relation to Battery Capacity



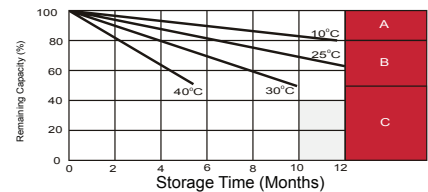
### Effect of Temperature on Long Term Float Life



### Cycle Life in Relation to Depth of Discharge



### Self Discharge Characteristics



- A** No supplementary required (Carryout supplementary charge before use if 100% capacity is required.)
- B** Supplementary charge required before use. Optional charging way as below:  
 1. Charged for above 3 days at limited current 0.25CA and constant voltage 2.25V/cell.  
 2. Charged for above 20 hours at limited current 0.25CA and constant voltage 2.25V/cell.  
 3. Charged for 8 ~ 10 hours at limited current 0.05 CA.
- C** Supplementary charge may often fail to recover the capacity. The battery should never be left standing till this is reached.

ALL DATA IS SUBJECT TO CHANGE WITHOUT NOTICE