

# CBL 600-2

2V 600AH

General Purpose



## CBL 600-2



## Physical Specification

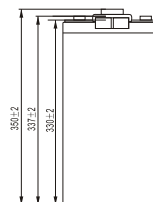
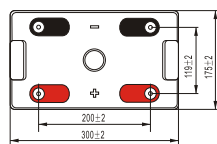
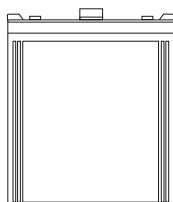
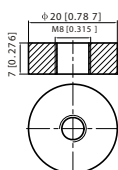
Part Number:	<b>CBL600-2</b>
Length:	<b>300 ± 2 mm (11.81 inches)</b>
Width:	<b>175 ± 2 mm (6.89 inches)</b>
Container Height:	<b>330 ± 2 mm (12.99 inches)</b>
Total Height (with terminal):	<b>350 ± 2 mm (13.78 inches)</b>
Approx Weight:	<b>Approx 35.0 kg (77.18 lbs)</b>

## Specifications

	Normal Voltage	2V
	Normal Capacity (20HR)	600AH
Terminal Type	Standard Terminal	T11
	Optional Terminal	-
Container Material	Standard Option	ABS
	Flame Retardant Option (FR)	UL94:VO
Rated Capacity	630.0 AH/31.5A	(20hr, 1.80V/cell, 25°C / 77°F)
	600.0 AH/60.0A	(10hr, 1.80V/cell, 25°C / 77°F)
	513.0 AH/102.6A	(5hr, 1.75V/cell, 25°C / 77°F)
	450.0 AH/150.0A	(3hr, 1.75V/cell, 25°C / 77°F)
	360.0 AH/360.0A	(1hr, 1.60V/cell, 25°C / 77°F)
Max Discharge Current	4800A (5s)	
Internal Resistance	Approx 0.55mΩ	
Discharge Characteristics	Operating Temp. Range	Discharge: -15 ~ 50°C (5 ~ 122°F)
		Charge: 0 ~ 40°C (5 ~ 104°F)
		Storage: -15 ~ 40°C (5 ~ 104°F)
	Nominal Operating Temp. Range	25 ± 3°C (77 ± 5°F)
	Cycle Use	Initial Charging Current less than 180.0A. Voltage 2.4V ~ 2.5V at 25°C (77°F) Temp. Coefficient -5mV/°C
	Standby Use	No limit on Initial Charging Current Voltage 2.25V ~ 2.3V at 25°C (77°F) Temp. Coefficient -3mV/°C
Capacity affected by Temperature	40°C (104°F) 103%	
	25°C (77°F) 100%	
	0°C (32°F) 86%	
Design Floating Life at 20°C	10 Years	
Self Discharge	Canbat batteries may be stored for up to 6 months at 25°C(77F) and then a refresh charge is required. For higher temperatures the time interval will be shorter.	

## Dimensions

### T11 Terminal



ALL DATA IS SUBJECT TO CHANGE WITHOUT NOTICE

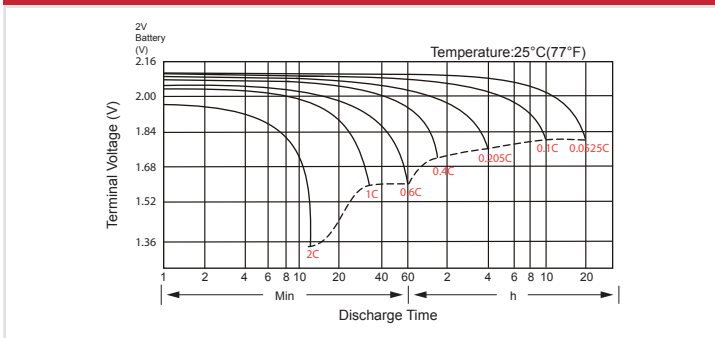
### Constant Current Discharge (Amperes) at 25°C (77°F)

F.V/Time	5 min	10 min	15 min	20 min	30 min	45 min	1h	2h	3h	4h	5h	6h	8h	10h	20h
1.85V/cell	700.0	626.8	542.2	479.9	401.1	325.8	265.9	178.2	136.2	109.8	94.0	82.7	67.1	57.3	30.4
1.80V/cell	852.0	721.8	617.8	537.9	440.7	350.4	283.3	187.5	147.6	113.6	97.8	86.2	70.3	60.0	31.5
1.75V/cell	\	827.1	699.0	596.1	479.4	379.2	304.8	198.9	150.0	119.9	102.6	90.3	72.1	61.2	31.9
1.70V/cell	\	935.0	772.6	655.6	509.9	405.1	322.7	210.0	156.6	124.8	106.7	93.5	74.4	62.7	32.6
1.65V/cell	\	\	822.0	692.9	545.8	421.1	335.3	216.9	161.6	128.6	109.7	95.2	75.8	63.7	33.1
1.60V/cell	\	\	923.9	772.6	597.0	455.5	360.0	227.7	168.4	134.0	114.8	99.4	78.6	65.8	34.1

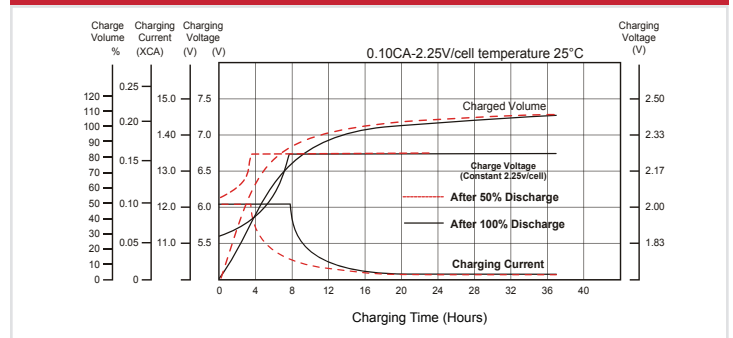
### Constant Power Discharge (Watts) at 25°C (77°F)

F.V/Time	5 min	10 min	15 min	20 min	30 min	45 min	1h	2h	3h	4h	5h	6h	8h	10h	20h
1.85V/cell	1286.9	1145.5	1017.1	909.5	768.5	629.5	515.6	347.8	266.9	215.8	185.2	163.4	133.1	114.0	60.5
1.80V/cell	1549.7	1324.8	1143.5	1004.5	831.6	671.7	546.3	363.6	287.6	222.0	191.8	169.6	139.0	119.2	62.6
1.75V/cell	\	1493.9	1277.9	1102.5	897.1	720.2	585.2	384.2	291.1	233.5	200.5	177.2	142.3	121.4	63.4
1.70V/cell	\	1650.7	1392.9	1203.4	969.4	766.4	617.5	404.8	303.3	246.6	208.3	183.2	146.7	124.3	64.7
1.65V/cell	\	\	1470.6	1262.5	1007.5	789.5	637.1	415.7	311.7	249.0	213.3	185.9	149.0	126.1	65.7
1.60V/cell	\	\	1625.9	1392.4	1094.3	849.5	680.4	434.3	323.3	258.7	222.5	193.5	154.3	129.9	67.6

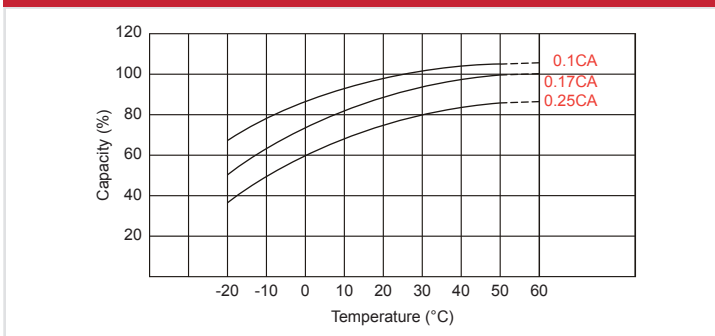
### Discharge Characteristics



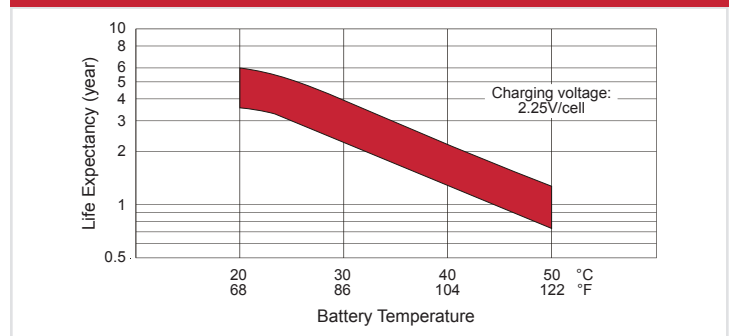
### Float Charging Characteristics



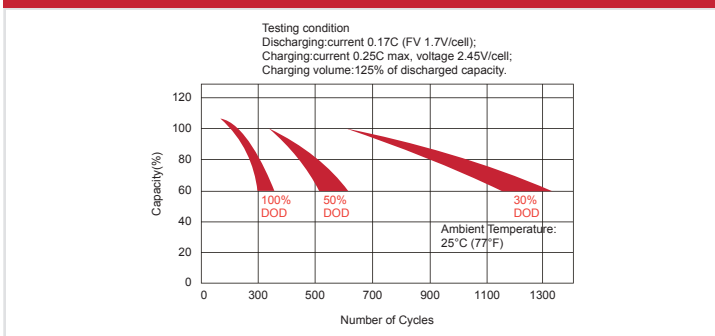
### Temperature Effects in Relation to Battery Capacity



### Effect of Temperature on Long Term Float Life



### Cycle Life in Relation to Depth of Discharge



### Self Discharge Characteristics

