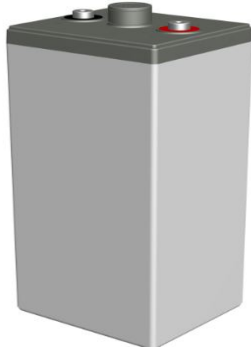




## CBL 300-2



## Physical Specification

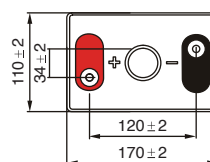
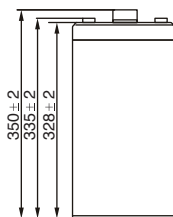
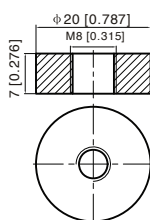
Part Number:	<b>CBL300-2</b>
Length:	<b>170 ± 2 mm (6.69 inches)</b>
Width:	<b>150 ± 2 mm (5.91 inches)</b>
Container Height:	<b>328 ± 2 mm (12.91 inches)</b>
Total Height (with terminal):	<b>350 ± 2 mm (13.78 inches)</b>
Approx Weight:	<b>Approx 14.0 kg (30.9 lbs)</b>

## Specifications

	Normal Voltage	2V
	Normal Capacity (20HR)	315AH
Terminal Type	Standard Terminal	T11
	Optional Terminal	-
Container Material	Standard Option	ABS
	Flame Retardant Option (FR)	UL94:VO
Rated Capacity	315.0 AH/15.75A	(20hr, 1.80V/cell, 25°C / 77°F)
	300.0 AH/30.0A	(10hr, 1.80V/cell, 25°C / 77°F)
	256.5 AH/51.3A	(5hr, 1.75V/cell, 25°C / 77°F)
	225.0 AH/75.0A	(3hr, 1.75V/cell, 25°C / 77°F)
	180.0 AH/180.0A	(1hr, 1.60V/cell, 25°C / 77°F)
Max Discharge Current	2400A (5s)	
Internal Resistance	Approx 0.9mΩ	
Discharge Characteristics	Operating Temp. Range	Discharge: -15 ~ 50°C (5 ~ 122°F)
		Charge: 0 ~ 40°C (5 ~ 104°F)
		Storage: -15 ~ 40°C (5 ~ 104°F)
	Nominal Operating Temp. Range	25 ± 3°C (77 ± 5°F)
	Cycle Use	Initial Charging Current less than 90.0A. Voltage 2.4V ~ 2.5V at 25°C (77°F) Temp. Coefficient -5mV/°C
	Standby Use	No limit on Initial Charging Current Voltage 2.25V ~ 2.3V at 25°C (77°F) Temp. Coefficient -3mV/°C
Capacity affected by Temperature	40°C (104°F) 103%	
	25°C (77°F) 100%	
	0°C (32°F) 86%	
Design Floating Life at 20°C	10 Years	
Self Discharge	Canbat batteries may be stored for up to 6 months at 25°C(77°F) and then a refresh charge is required. For higher temperatures the time interval will be shorter.	

## Dimensions

### T11 Terminal



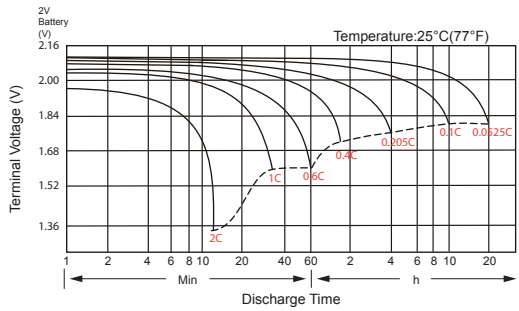
### Constant Current Discharge (Amperes) at 25°C (77°F)

F.V/Time	5 min	10 min	15 min	20 min	30 min	45 min	1h	2h	3h	4h	5h	6h	8h	10h	20h
1.85V/cell	350.0	308.4	271.1	240.0	200.6	162.9	133.0	89.1	68.1	54.9	47.0	41.4	33.5	28.7	15.2
1.80V/cell	426.0	360.9	308.9	269.0	220.4	175.2	141.6	93.8	73.8	56.8	48.9	43.1	35.1	30.0	15.8
1.75V/cell	\	413.6	349.5	298.1	239.7	189.6	152.4	99.5	75.0	59.9	51.3	45.2	36.0	30.6	16.0
1.70V/cell	\	467.5	386.3	327.8	260.5	202.5	161.3	105.0	78.3	62.4	53.4	46.8	37.2	31.4	16.3
1.65V/cell	\	\	411.0	346.5	272.9	210.5	167.6	108.5	80.8	64.3	54.8	47.6	37.9	31.9	16.6
1.60V/cell	\	\	462.0	386.3	298.5	227.7	180.0	113.9	84.2	67.0	57.4	49.7	39.3	32.9	17.1

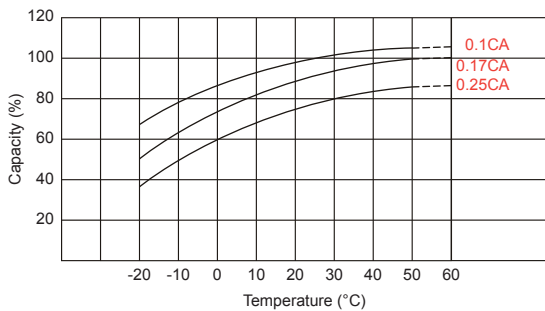
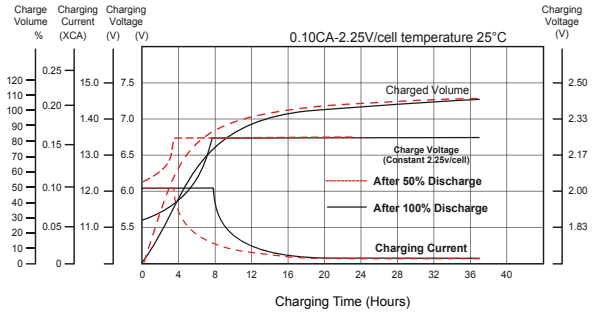
### Constant Power Discharge (Watts) at 25°C (77°F)

F.V/Time	5 min	10 min	15 min	20 min	30 min	45 min	1h	2h	3h	4h	5h	6h	8h	10h	20h
1.85V/cell	643.5	572.7	508.5	454.7	384.3	314.7	257.8	173.9	133.4	107.9	92.6	81.7	66.5	57.0	30.3
1.80V/cell	774.9	662.4	571.8	502.3	415.8	335.9	273.2	181.8	143.8	111.0	95.9	84.8	69.5	59.6	31.3
1.75V/cell	\	747.0	639.0	551.3	448.6	360.1	292.6	192.1	145.5	116.7	100.3	88.6	71.1	60.7	31.7
1.70V/cell	\	825.3	696.5	601.7	484.7	383.2	308.8	202.4	151.7	121.3	104.2	91.6	73.4	62.1	32.3
1.65V/cell	\	\	735.3	631.3	503.7	394.8	318.5	207.9	155.8	124.5	106.6	93.0	74.5	63.1	32.8
1.60V/cell	\	\	812.9	696.2	547.2	424.7	340.2	217.2	161.7	129.3	111.2	96.8	77.1	65.0	33.8

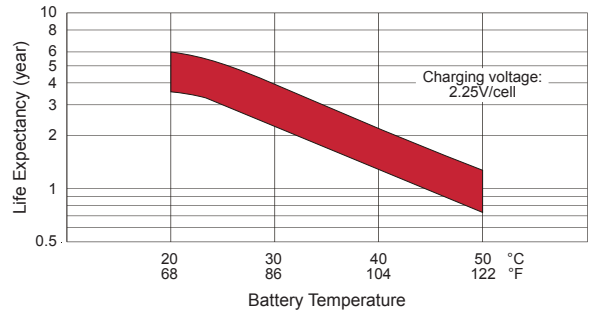
### Discharge Characteristics



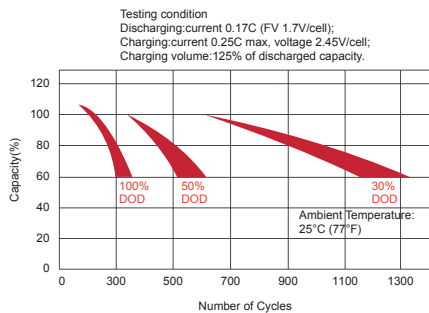
### Float Charging Characteristics



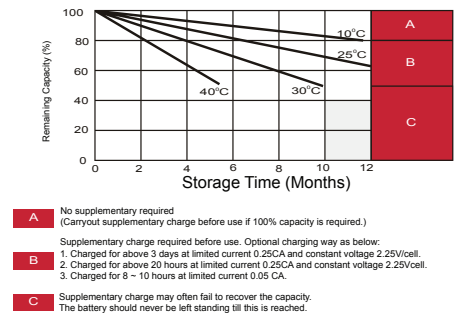
### Effect of Temperature on Long Term Float Life



### Cycle Life in Relation to Depth of Discharge



### Self Discharge Characteristics



ALL DATA IS SUBJECT TO CHANGE WITHOUT NOTICE