

The ROCKSPIRIAN

April 2019
Volume 3, Number 36



APRIL'S BEEN A VERY ACTIVE MONTH at Rockspire with the advent of spring and better weather. Underground utilities construction is being extended to the homesites, the Plein Air Artists of Eureka Springs returned to paint at Rockspire, the NW Arkansas Native Plant Society hiked Joan's Angel Trail, friends and neighbors attended April's forum and movie night, and the Myers family held their gathering.



Myers Family Gathering – Hiking & Canoeing
4.27.19



NW Arkansas Native Plant Society
4.27.19

THE NORTHWEST ARKANSAS NATIVE PLANT SOCIETY spent several hours hiking *Joan's Angel Trail* identifying, debating, admiring, and eating (yes, they ate the leaves, stems, and berries of some of the native plants found along the trail). Burnetta Hinterthuer and Steven Foster were the expert botanists for the hike and only a couple of disagreements over nomenclature broke out and resolved with no serious injuries! Also, on the hike were Sue Hubbard, Ellen Adams, Quintin Welch, and George Myers.



Myers Family Gathering
Photo by M. Johnson 4.27.19

THE MYERS FAMILY GATHERING was a series of events during the week of April 23-28 which included hikes in and around Rockspire, floating the Kings River, and multiple family gatherings culminating with a barbeque at the MobbyMac Carriage House.

Attending were:

From Springdale, AR: Alex Bevil, Mike Norton,
Judy & Fred Leyba

From Eureka, CA: Christine, Bill, and Kiera McIver

From Dallas, TX: Deborah, Richard, Virginia,
and Helen Waterman

From Huntsville, AL: Nancy and Bob Hamilton

From Alma, AR: Rebecca Gibbons (not pictured)

From Rockspire: George Myers and Jynx (dog)



April 2019

THE PLEIN AIR ARTISTS OF EUREKA SPRINGS returned to Rockspire on April 24th to paint various scenes they had scoped out on their previous visit last June. Their subject selections were very diverse as they painted:

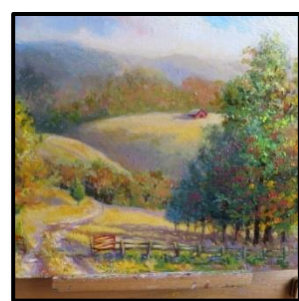
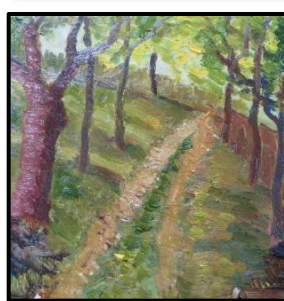
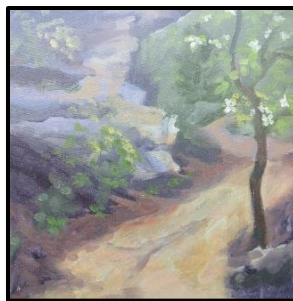
- Rockspire’s Orchard Ridge Road
- The vintage Airstream camper
- The drying shed and tractor
- The bluffs along Joan’s Angel Trail
- The scenic overlook of the Kings River Valley

Several of the artists later gathered in the MobbyMac Carriage House to discuss plein air painting techniques, watch instructional videos, and enjoy a potluck lunch.



Underground water storage tank being installed 1,000 feet away, and 70 ft. above the homesites.

Underground water pipes, communications and electrical conduits were also installed to the homesites.



Plein Air Artists of Eureka Springs

Photos by: Mariellen Griffith - 4.24.19

Paintings by: Jody Stephenson, Cynthia ReRobbins, Mariellen Griffith, Paul O’Neill

