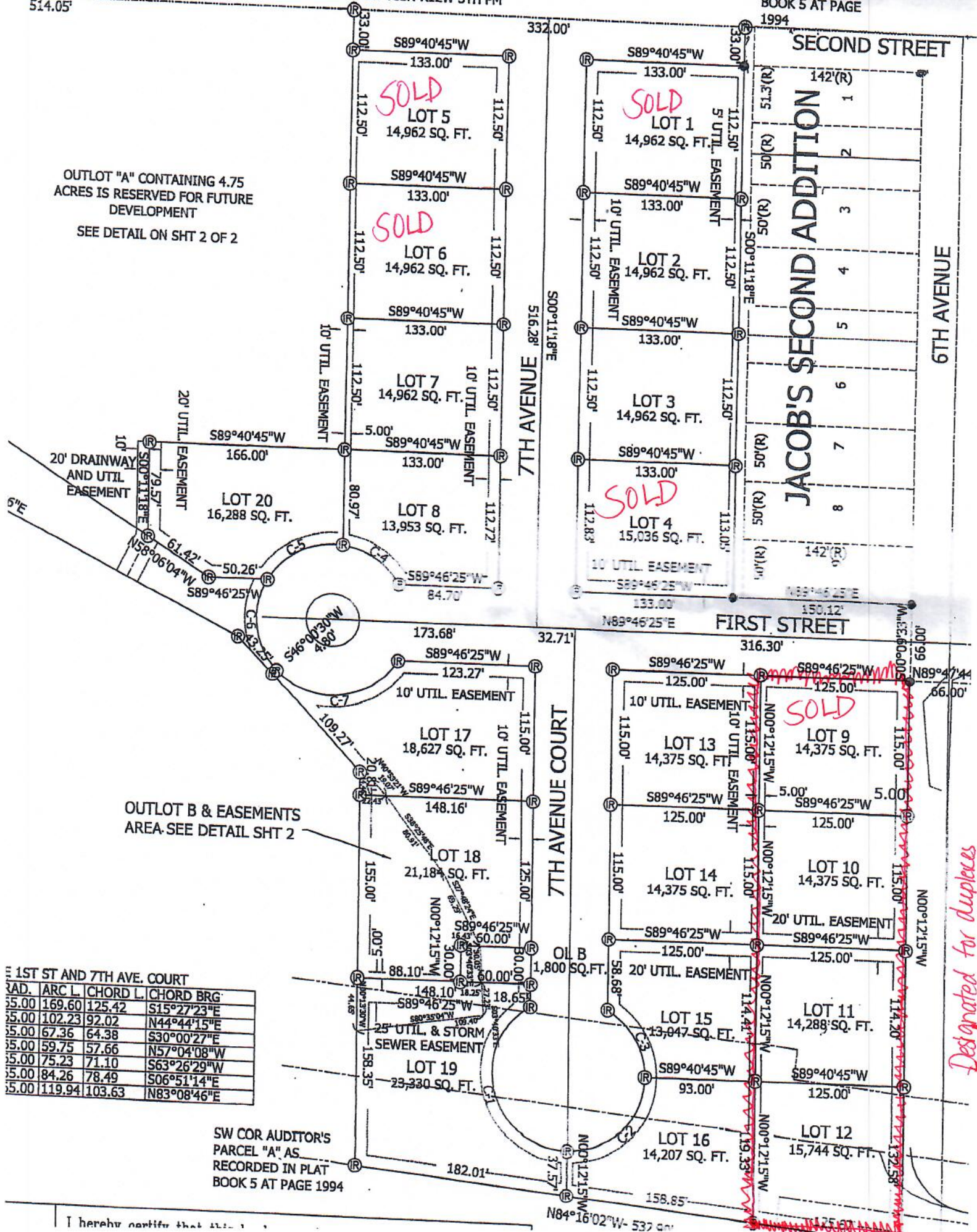


514.05'

OUTLOT "A" CONTAINING 4.75
ACRES IS RESERVED FOR FUTURE
DEVELOPMENT
SEE DETAIL ON SHT 2 OF 2



OUTLOT B & EASEMENTS
AREA-SEE DETAIL SHT 2

CHORD L.	CHORD BRG.
169.60	S15°27'23"E
102.23	N44°44'15"E
67.36	S30°00'27"E
59.75	N57°04'08"W
75.23	S63°26'29"W
84.26	S06°51'14"E
119.94	N83°08'46"E

SW COR AUDITOR'S
PARCEL "A" AS
RECORDED IN PLAT
BOOK 5 AT PAGE 1994

Designated for duplexes

I hereby certify that this is a true and correct copy of the original plat as recorded in the public records of the State of North Carolina.