

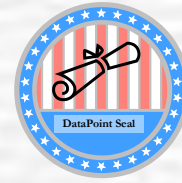
# 2014 Iowa Employer Benefits Study<sup>©</sup>

*16<sup>th</sup> Annual Study*

David P. Lind Benchmark  
13375 University, Suite 202  
Clive, IA 50325  
[www.DPLindBenchmark.com](http://www.DPLindBenchmark.com)  
515.868.0920



# Seal of Approval

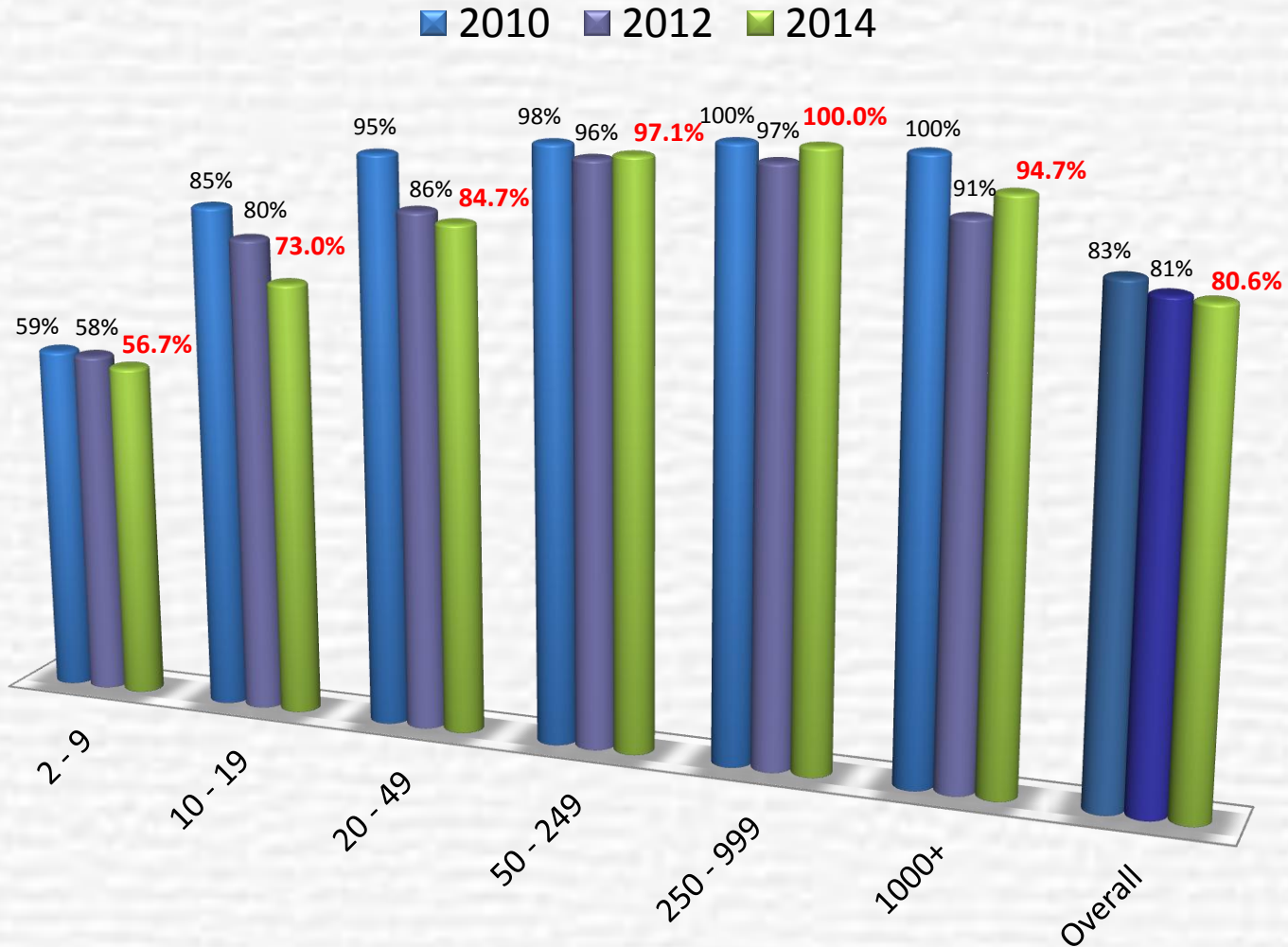


**“ The response rate of this study is 23.1 percent – 1,002 Iowa employers responded. For the overall sample, the employee-size weighted percentages are all accurate to within plus or minus 3.1 percent, at a 95 percent confidence level. ”**

***Data Point Research, Inc***



# Percentage of Employers Offering Health Coverage in Iowa

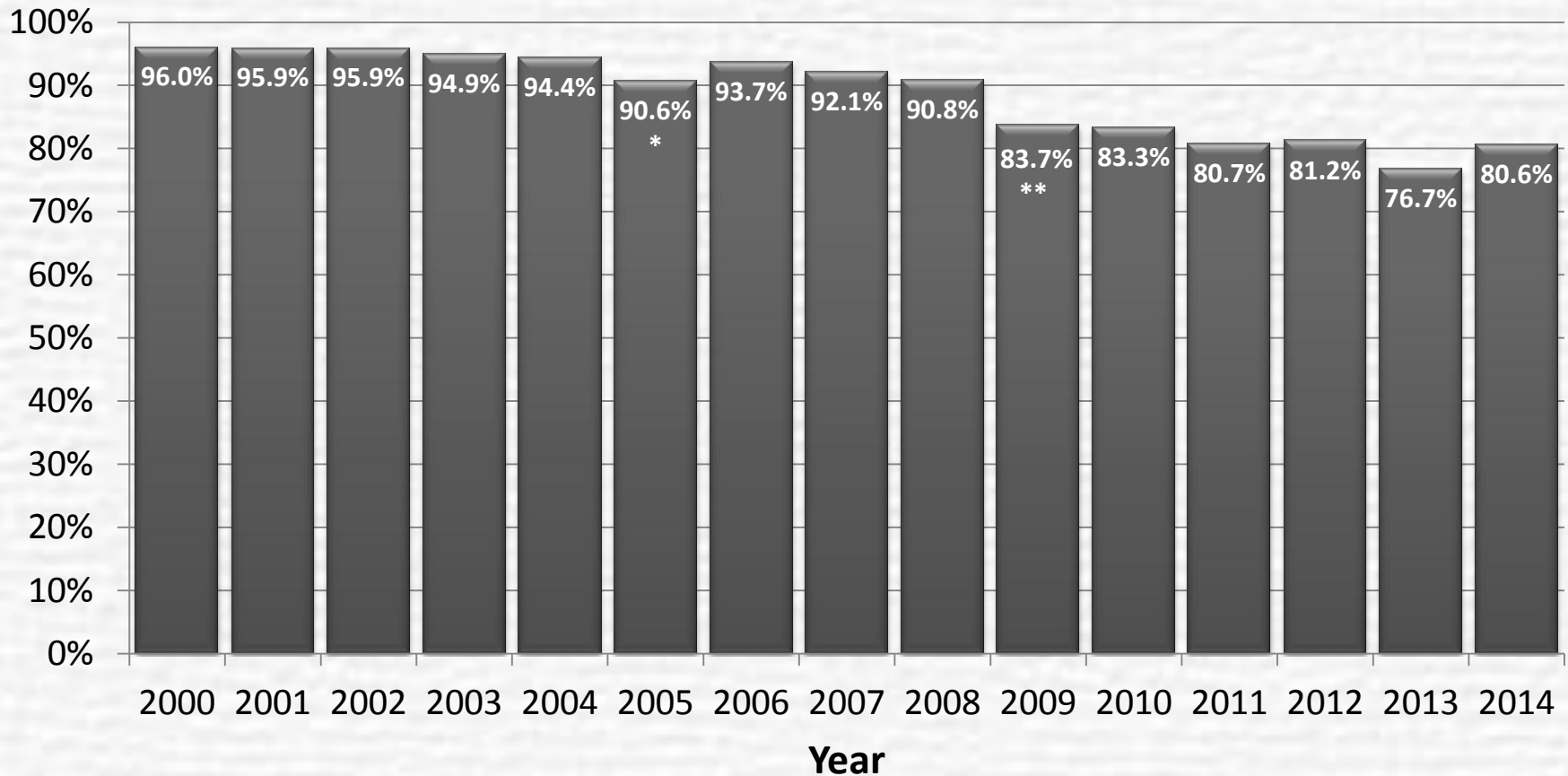


# Health Insurance in Iowa

## History: Employers Offering Health Insurance

\*Employer Size Category of 10–19 Included since 2005

\*\*Employer Size Category of 2-10 Included since 2009

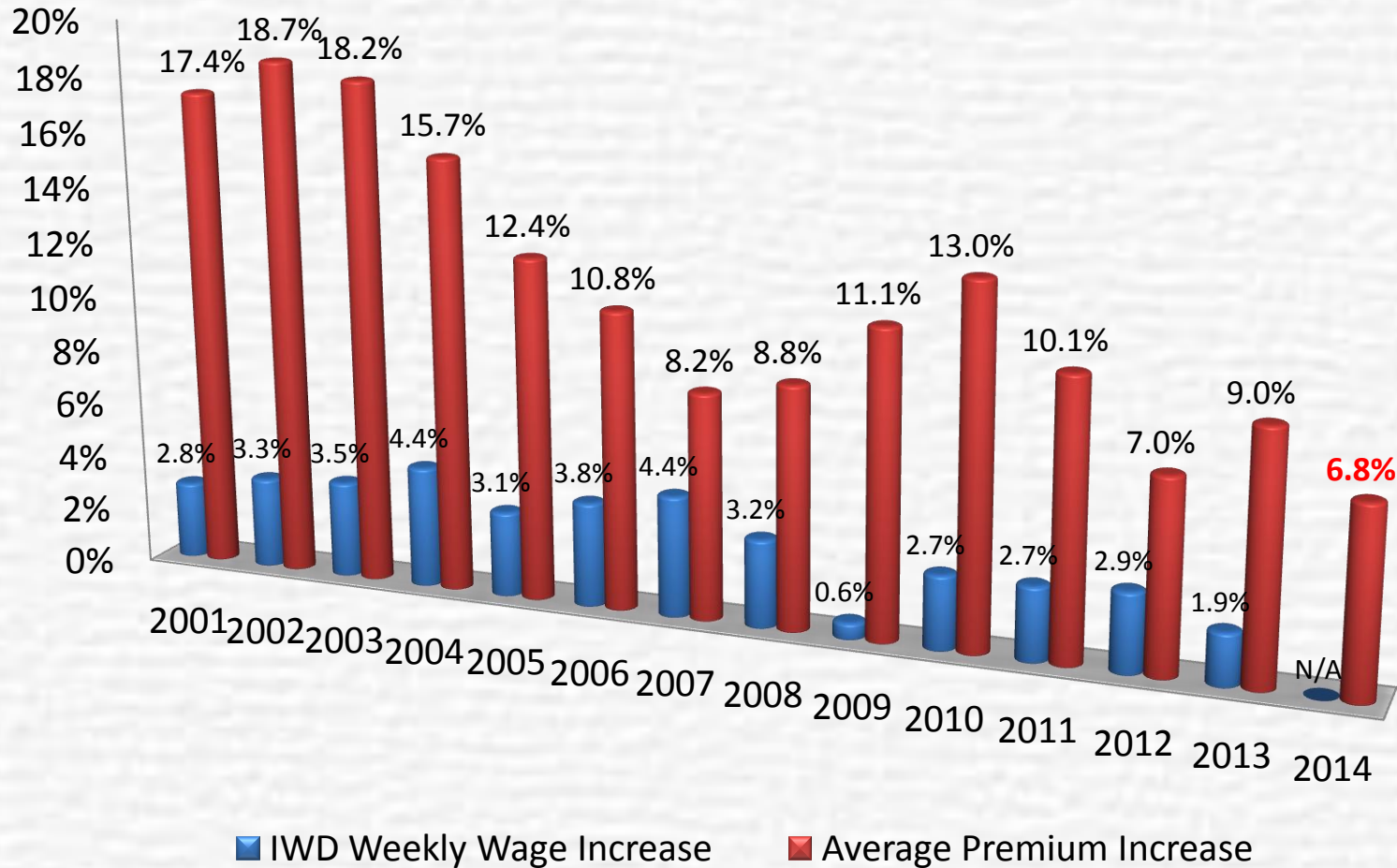


# Average Health Insurance Rate Adjustments Reported in 2014

## For All Employers, Regardless of Rate Direction

Firm Size (Employees)	Average % Increase 2014
2 – 9	9.9%
10 – 19	9.0%
20 – 49	7.7%
50 – 249	5.7%
250 – 999	4.8%
1000 +	4.7%
<b>Overall</b>	<b>6.8%</b>

# Average Health Insurance Rate Increases Compared to Statewide Average Weekly Wage Increases 2001 to 2014



**Weekly Wage Increase Percentages Provided by Iowa Workforce Development**