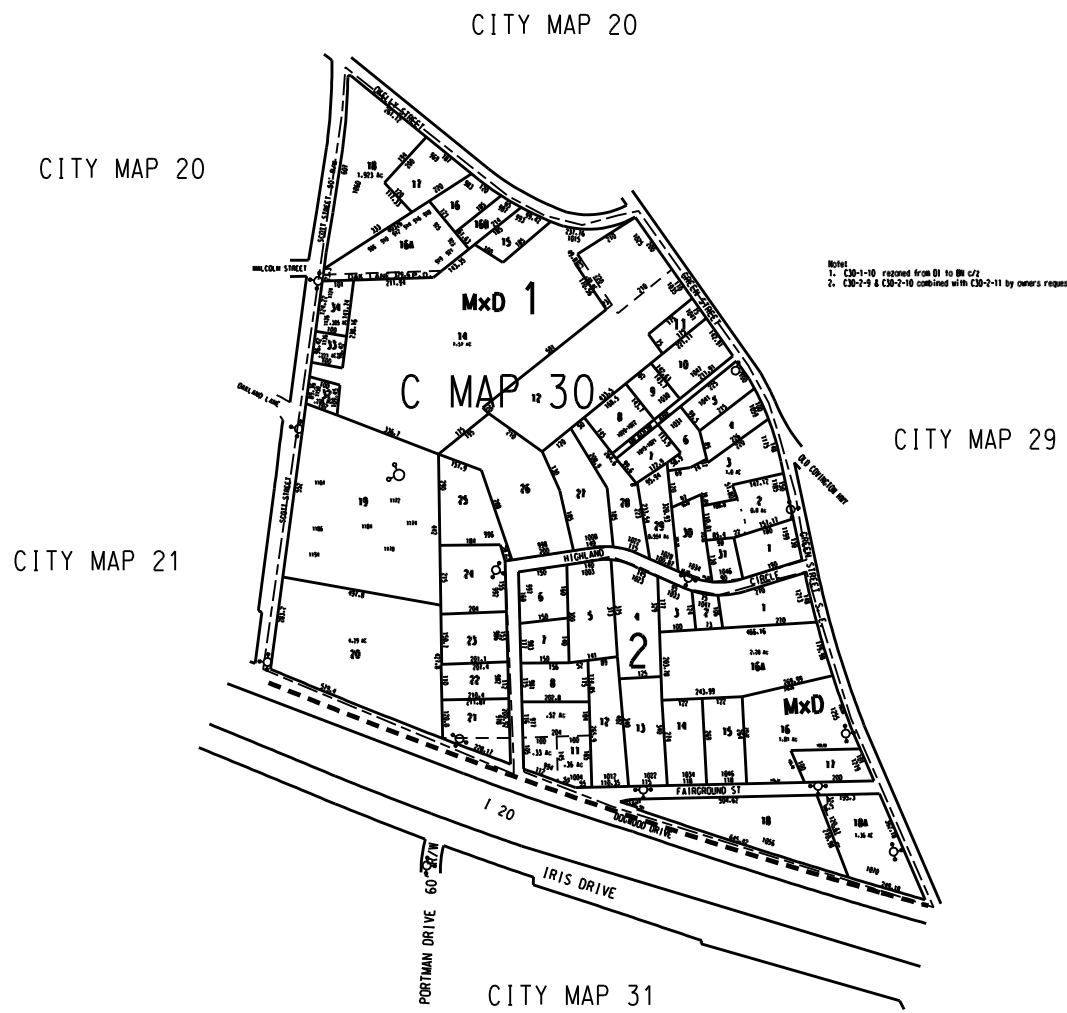


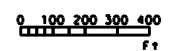
THIS MAP HAS BEEN COMPILED FROM THE MOST AUTHENTIC INFORMATION AVAILABLE, AND NEITHER ROCKDALE COUNTY NOR HUMPHRETT AND ASSOCIATES, INC. ASSUME RESPONSIBILITY FOR ERRORS OR OMISSIONS



Note:  
 1. C30-1-10 rezoned from B1 to B1 C2  
 2. C30-2-9 & C30-2-10 combined with C30-2-11 by owners request for B5

LEGEND

- County Boundary
  - Map Boundary
  - Limit of Ownership
  - Original Platted Line
  - District Line
  - Notarized Right of way
  - City Limit
  - Easement
  - Stream
- CHURCH SCHOOL CEMETERY



MAP 75

TAX VALUATION MAP		LAND LOT 295-296	MAP NO.
ROCKDALE COUNTY GEORGIA		DISTRICT 16	C30
		D. M. C. 476	
DATE: DEC. 1, 1987	LAST REVISION: 2004	PHOTO: NO. 85C 15x 23	1" = 200'