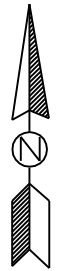


THIS MAP HAS BEEN COMPILED FROM THE MOST AUTHENTIC INFORMATION AVAILABLE, AND NEITHER ROCKDALE COUNTY NOR HUMPHRETT AND ASSOCIATES, INC. ASSUME RESPONSIBILITY FOR ERRORS OR OMISSIONS

CITY MAP 23

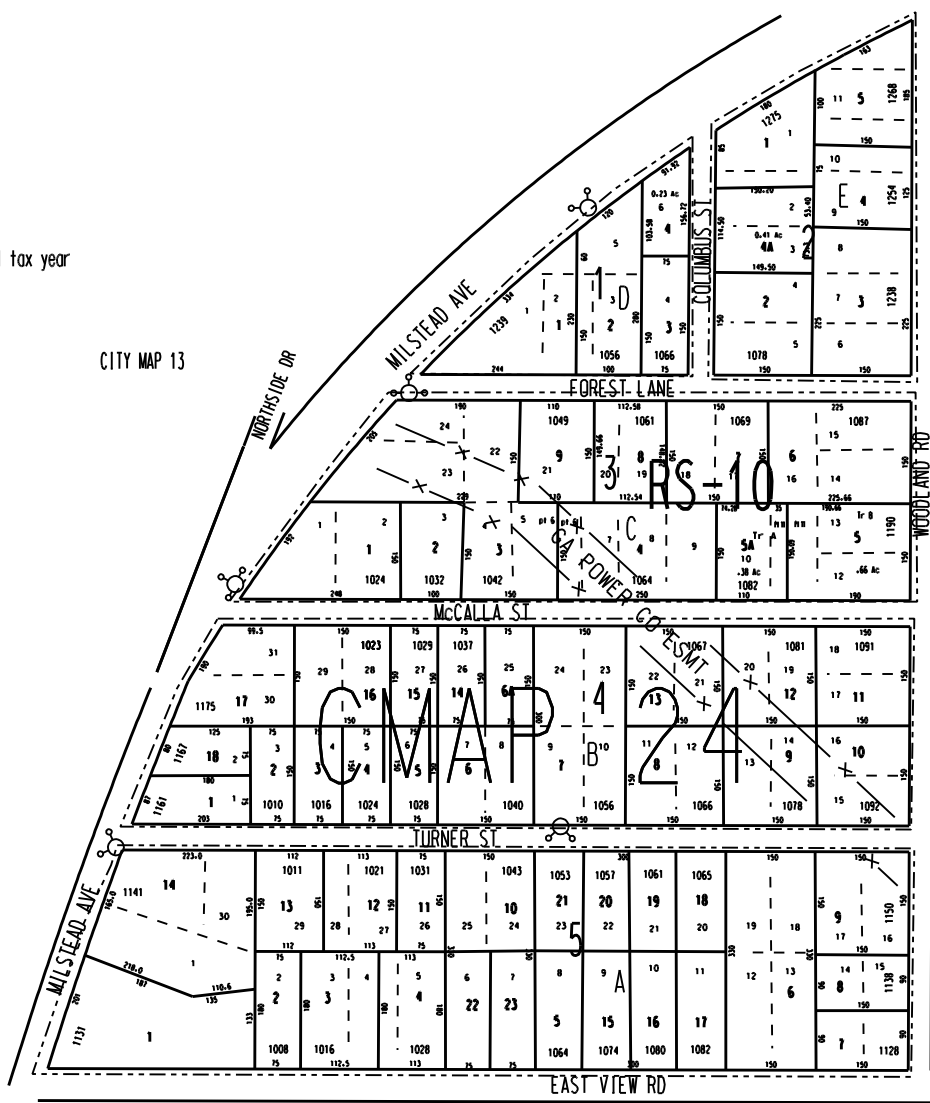


- Note
1. C24-3-5A from C24-3-5 br plat 32/56 for 04 tax year
  2. C24-5-22 from C24-5-10 by deed 3650/40

CITY MAP 13

LOUIS McCALLA S/D  
PLAT BOOK A PG 10

CITY MAP 32

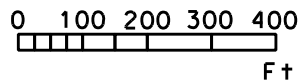


LEGEND

- County Boundary
- - - Map Boundary
- Limit of Ownership
- - - Original Platted Line
- - - District Line
- - - Railroad Right of Way
- - - City Limit
- - - Easement
- - - Stream
- CHURCH
- SCHOOL
- CEMETERY

CITY MAP 14

CITY MAP 25



TAX VALUATION MAP	LAND LOT 235-234	MAP NO.
ROCKDALE COUNTY	DISTRICT 16	C24
GEORGIA	G.M.O. 416	
DATE: DEC. 1, 1987 LAST REVISION 2003 PHOTO NO. 82-20		