



MICHIGAN HEALTH

ENDOWMENT FUND

Connecting Michigan for Health

June 5, 2019

MISSION

To improve the health of Michigan residents, with special emphasis on the health and wellness of children and seniors, while reducing the cost of health care.

ANNUAL GIVING

\$30 million+

PROGRAMS

Behavioral Health
Healthy Aging
Nutrition & Healthy Lifestyles
Community Health Impact
Special Projects & Emerging Ideas

CROSS-CUTTING GOALS

Integrated care
Workforce development

BEYOND GRANTMAKING

Convenings
Policy
Learning and evaluation



Eight Focus Areas



Infant
Mortality



Health
Services for
foster &
adopted
children



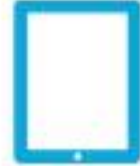
Wellness &
Fitness
Programs



Access to
Healthy Food



Behavioral
Health
Services



Technology
Enhancements



Health-related
Transportation
Services



Foodborne
Illness
Prevention

GRANT DETAILS

	GRANT RANGE	RFP RELEASE	AWARDS MADE
BEHAVIORAL HEALTH	Up to \$500,000	Winter	Summer
HEALTHY AGING	Up to \$500,000	Summer	Fall
NUTRITION & HEALTHY LIFESTYLES	Up to \$500,000	Winter	Summer
COMMUNITY HEALTH IMPACT	Up to \$100,000	Fall	Spring
SPECIAL PROJECTS & EMERGING IDEAS	Up to \$500,000	Summer, by invite	Fall

2019 Technology Report

- 46 total grants | 29 completed as of 4/30/19
- Amount invested: \$12,835,798
- Two main goals:
 - Provide clear understanding of what we've funded and what can be learned from those investments
 - Gather insight for how we can improve our grantmaking and support of these grantees going forward

MICHIGAN HEALTH
ENDOWMENT FUND

THE ROLE OF
HEALTH TECHNOLOGY
IN MICHIGAN

FINDINGS AND LESSONS FROM
OUR INVESTMENTS SINCE 2015

MAY 2019

<https://www.mihealthfund.org/news/publications>

MICHIGAN HEALTH
ENDOWMENT FUND



Grantee Categories in Report

- Client Education and Behavior Change Communication
- Provider Training and Education
- Telemedicine
- Resource Coordination
- Data Interchange, Interoperability and Accessibility
- Provider-to-Provider Communication
- Sensors and Point-of-Care Diagnostics
- Data Collection and Reporting



A couple highlights

- Wayne State University – High Tough-High Tech
 - Implementation of mommy check-up within OB practices
- Washtenaw County Community Mental Health – Correctional Care Integration Project
 - Integrating HIE into adult and youth correctional facilities



Lessons Learned

1. Technology-based approaches address a wide variety of barriers to access
2. Understanding dynamics between involved stakeholders is critical
3. Technology's integration into health interventions is not a cure-all...
4. ...But they can have significant impacts when applied strategically