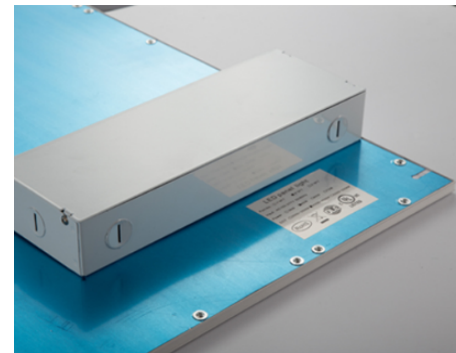
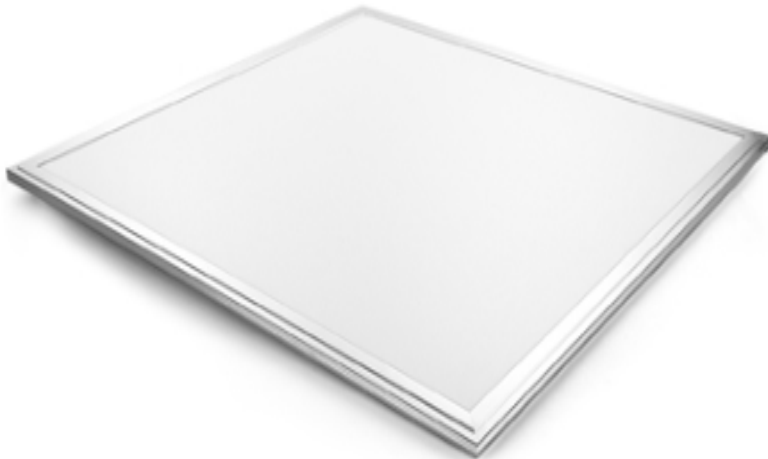


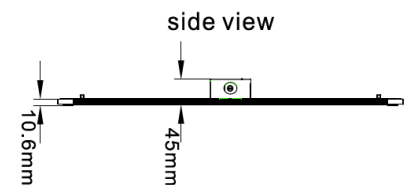
VLFP series
LED flat panel 2X2

CSA, cUL, cETL, or equal

Project Reference: _____ Fixture Type: _____ Cat. No.: _____ Voltage: _____ Options: _____



- Designed to fit T-Bar ceilings
- High performance and durability at an affordable price
- 115 lumens per watt, DLC qualified *
- Viewing angle: 120 degrees
- Durable aluminum frame, standard white or optional silver finish
- 120-277V, optional 347V is available, 0-10V dimmable



ORDERING INFORMATION

Product Code	Wattage	Lumens	Dimensions	CCT	CRI
VLFP-2X2-40W-40K-UNV	40W	4,600 lm	23.75 x 23.75 x 0.4"	4000K	83
VLFP-2X2-50W-40K-UNV	50W	5,750 lm	23.75 x 23.75 x 0.4"	4000K	83

ACCESSORIES / OPTIONS

Product Code	Description
30K	3000K option: replace "40K" in product code above with "30K"
50K	5000K option: replace "40K" in product code above with "50K"
VLFP-347	347V adder, order as separate item

* Consult factory for current DLC product codes.