

VFL8 series
LED Flood / Shoebox

CSA, cUL, cETL, or equal

Project Reference: _____ Fixture Type: _____ Cat. No.: _____ Voltage: _____ Options: _____



VFL83A
(75W & 100W)



VFL84A (150W & 200W)



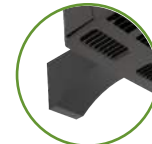
VFL85A
(240W & 300W)



Slipfitter



Yoke Mount



Straight Arm



10KV SPD

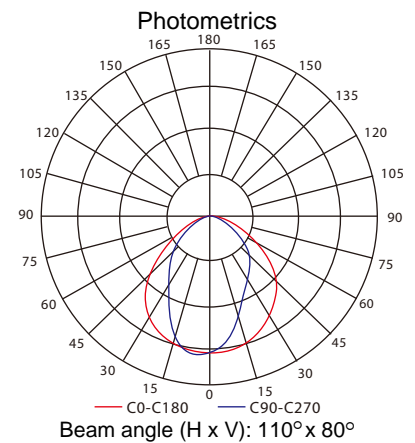


Photocell



Motion Sensor

- Die-cast aluminum body with dark bronze powder coat finish
- Rugged and versatile design, use as a flood light or pole light
- Ideal for general site lighting, pathways, alleys, parking areas, etc.
- Ambient temperature: -40°C to +40°C
- 120 to 130 lumens per watt



| ORDERING GUIDE | | | | | | Lumens |
|------------------------------|-------|-----|------------------|-----------------|--|--------|
| Example VLF84A-150-4K-UNV-YK | | | | | | |
| Series | Watts | CCT | Voltage | Mount Options | Options | |
| VFL83A | 75 | 4K | UNV (120-277VAC) | SA Straight Arm | PS Photocell | 9750 |
| | 100 | | | | | 12500 |
| VFL84A | 150 | 5K | 347 347VAC | SP Slip Fitter | MS Motion sensor | 18750 |
| | 200 | | | | | 24000 |
| VFL85A | 240 | 5K | 347 347VAC | YK Yoke Mount | SPD 10 KV surge protection blank for no options | 29760 |
| | 300 | | | | | 35700 |

* Not all configurations are DLC listed, consult factory for current status and DLC codes

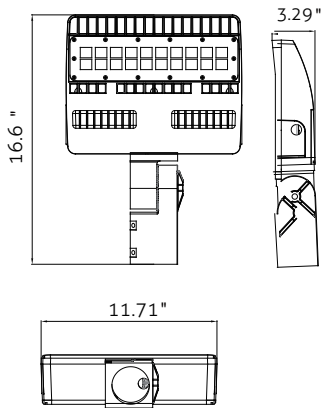
VFL8 series

LED Flood / Shoebox

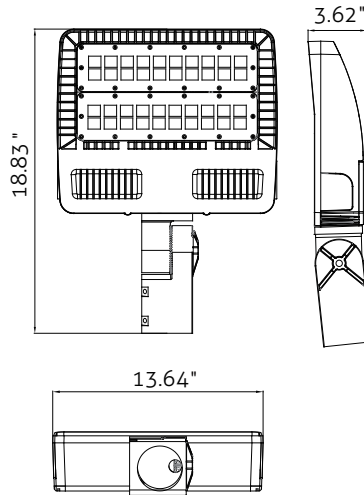
CSA, cUL, cETL, or equal

Dimensions (inches)

VFL83A (75W and 100W)



VFL84A (150W and 200W)



VFL85A (240W and 300W)

