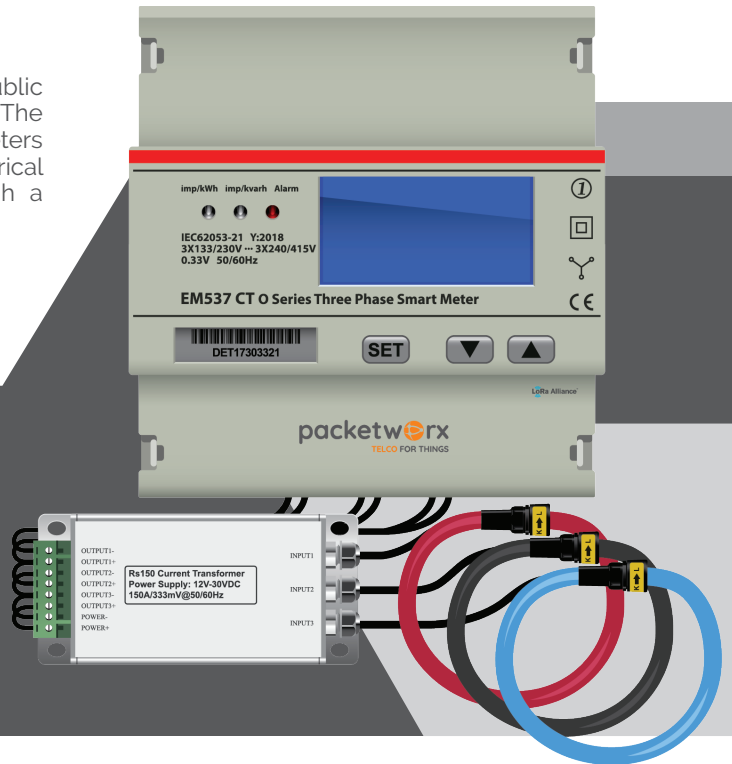


# packetPOWER

**PacketPOWER** is a LoRaWAN®-enabled device that allows public utility companies to monitor consumption of their customers. The device connects to the household or business electricity meters and makes it 'smart' by collecting accurate, real-time electrical consumption information and evaluating the data through a dashboard.



## Features

- Three phase metering 5 DIN modules
- Rogowski & open-core sensor, 330mV ac input up to 7500A
- 27 CT rate can be selected
- Wide voltage work: 3\*110~277/3\*230~480V
- Accuracy class 1 according to IEC62053-2112864
- 128X64 Lattice LCD display, large clear backlight display
- Isolated pulse output (DIN43864) 1,2,3 and 4 tariff meter option, 1,2,3 and 4 tariff meter option
- Electrical measurements:
  - Volts L1,L2,L3-N
  - Amperes L1,L2,L3,N
  - kW & kVar & kVA & PF L1,L2,L3
  - Frequency 60Hz
  - kWh, kVarh +, -
  - kW, kVar Demand +, -
  - kWh & kVarh Tariff T1,T2,T3,T4
- 1,2,3 and 4 tariff meter option, up to 12 time periods per day, up to 64 programmable special days
- Optional single-phase model
- RS485 communication port, modbus protocol
- Program by button on the nameplate
- Memory back-up (EEPROM)

## Applications

- Real-time energy management solution
- Smart building
- Prepaid electric billing

## Technical Specification

### Performance Criteria

Operating Humidity	≤75%
Storage Humidity	≤95%
Operating Temperature	-25°C ~ +55°C
Storage Temperature	-40°C ~ +70°C
Humidity	75% yearly average, 95% on 30 days/year
International Standard	EN50470-3 & IEC62053-21
Accuracy Class	Cl.1
Protection against penetration of dust and water	IP51
Insulating encased meter protective class	
<b>Connection Area Main Terminals</b>	
Terminals flexible 1×mm <sup>2</sup>	0-2.5mm <sup>2</sup> LED1Kg
RS485 Cable	AWG18

### Meter Specification

<b>Voltage/Current Inputs</b>	
Measured Voltage (V)	3*110~277/3*230~480V
Primary Current (A)	Open core: AC 0-3000A
RS485 Cable	Rogowski: AC 0-7500A
Terminal flexible 1×mm <sup>2</sup>	AWG18
Terminal flexible 1×mm <sup>2</sup>	0-2.5mm <sup>2</sup>
Power consumption of current circuits (VA)	<0.01
Power consumption of voltage circuits (W)	<1.3W

### General Data

Frequency (Hz)	50 or 60 Hz
Accuracy	Cl.1
Environment resistance to heat and fire	Cover 650

### Enclosure Material

Upper and Lower	ABS+PC
-----------------	--------

### Pulse Output

Pulse width (ms)	100
Pulse constant	Prog imp/kWh

### LED

LED constant	Prog imp/kWh
--------------	--------------

### Dimension

Width (mm)	90
Height (mm)	104.5
Depth (mm)	60

**packetworx**

TELCO FOR THINGS

Packetworx IoT Technology Hub  
G/F ISquare Building, 15 Meralco Avenue,  
Ortigas, Pasig City, 1605, Philippines

(+632) 7971-9211 | (+63) 917-189-7613