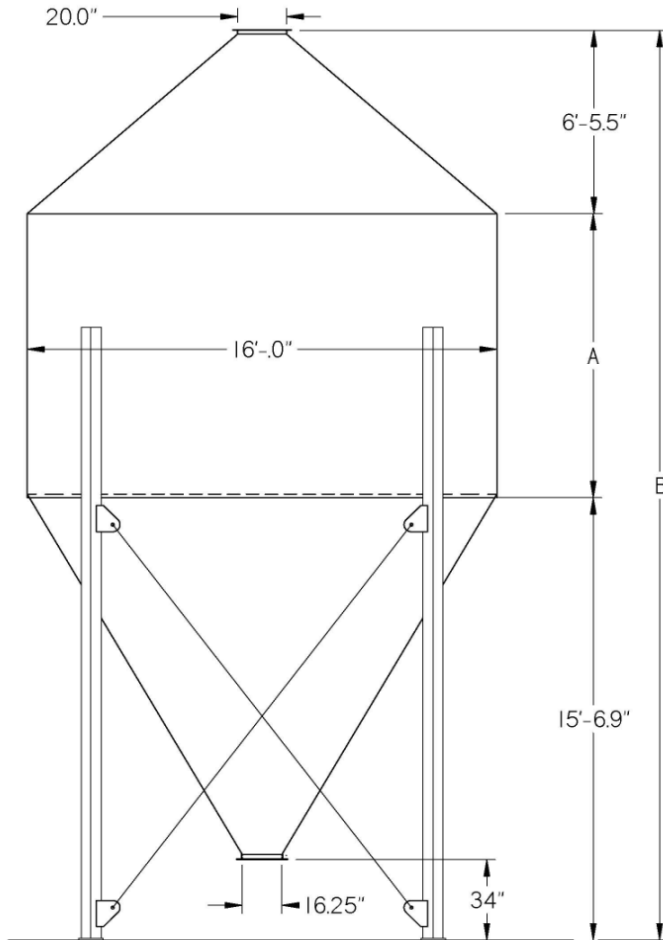


HP60 16' Diameter Dimensions & Cu. Ft. Capacity



Welded Bin HP60 MODEL	Net Total Cu Ft	Dimension "A"	Dimension "B"
HP60 16x10	3,437	10'	32'-2"
HP60 16x11	3,644	11'	33'-2"
HP60 16x12	3,850	12'	34'-2"
HP60 16x13	4,057	13'	35'-2"
HP60 16x14	4,264	14'	36'-2"
HP60 16x15	4,470	15'	37'-2"
HP60 16x16	4,677	16'	38'-2"
HP60 16x17	4,884	17'	39'-2"
HP60 16x18	5,091	18'	40'-2"
HP60 16x19	5,297	19'	41'-2"
HP60 16x20	5,504	20'	42'-2"
HP60 16x21	5,711	21'	43'-2"
HP60 16x22	5,918	22'	44'-2"
HP60 16x23	6,124	23'	45'-2"
HP60 16x24	6,331	24'	46'-2"
HP60 16x25	6,538	25'	47'-2"
HP60 16x26	6,744	26'	48'-2"
HP60 16x27	6,951	27'	49'-2"
HP60 16x28	7,158	28'	50'-2"
HP60 16x29	7,365	29'	51'-2"
HP60 16x30	7,571	30'	52'-2"
HP60 16x31	7,778	31'	53'-2"
HP60 16x32	7,985	32'	54'-2"
HP60 16x33	8,191	33'	55'-2"
HP60 16x34	8,398	34'	56'-2"
HP60 16x35	8,599	35'	57'-2"
HP60 16x36	8,800	36'	58'-2"
HP60 16x37	9,001	37'	59'-2"
HP60 16x38	9,202	38'	60'-2"
HP60 16x39	9,403	39'	61'-2"
HP60 16x40	9,604	40'	62'-2"

