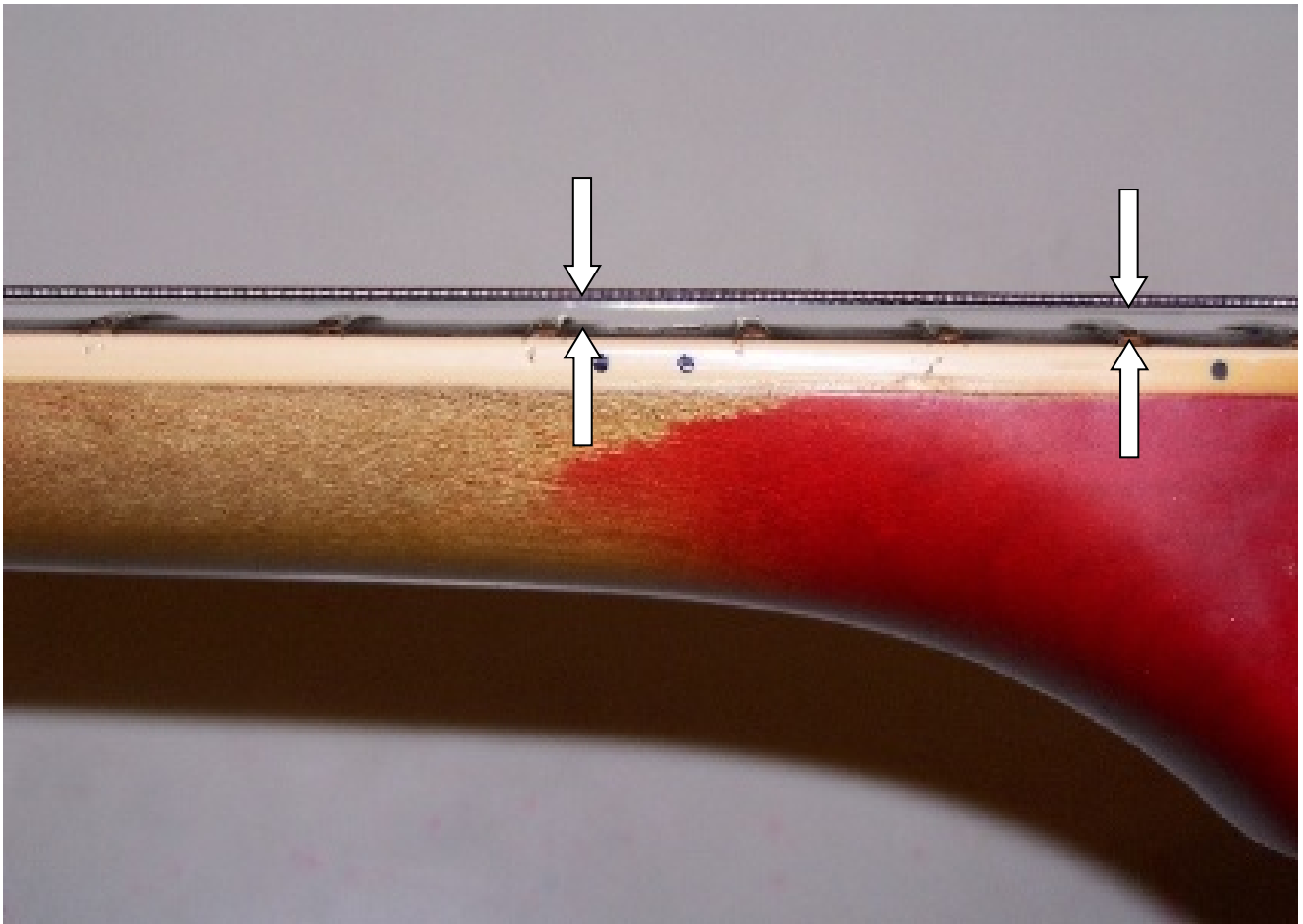


## What is guitar action?

This is usually described as a guitar's "playability." The distance of the strings above the tops of the frets (or fretboard). Basically, how high the strings are above the frets.

**High Action** means that the strings are higher off the frets than normal. This can cause issues with playability – making the notes or chords harder to play, needing more pressure than normal to play, adding stress to your fingers.

**Low Action** means that the strings are closer to the frets than normal. This can sometimes cause buzzing and unwanted vibrations on certain areas of the fretboard. Although easier to play, the tone can be altered due to string noise.



**Normal Action** is when the strings are adjusted to where playability is easy (finger pressure is normal), there is no buzzing or vibrations, and the general "feel" of the guitar and tone is ideal.

**Note** – Even though a guitarist can "tinker" with the adjustments needed to correct action related issues – it is always best to take your guitar to a professional to have the action set correctly.