



### RESIDENCE AMENITIES

- Spacious floorplan
- 12 x 24 white porcelain CONCORD tiles
- Samsung smart WIFI enabled front load full size washer & dryers
- Private balconies
- Oversized walk-in master closet fully built out
- ECOBEE Thermostat 3 Lite Pro
- Digital keyless entry
- Designer lighting fixtures

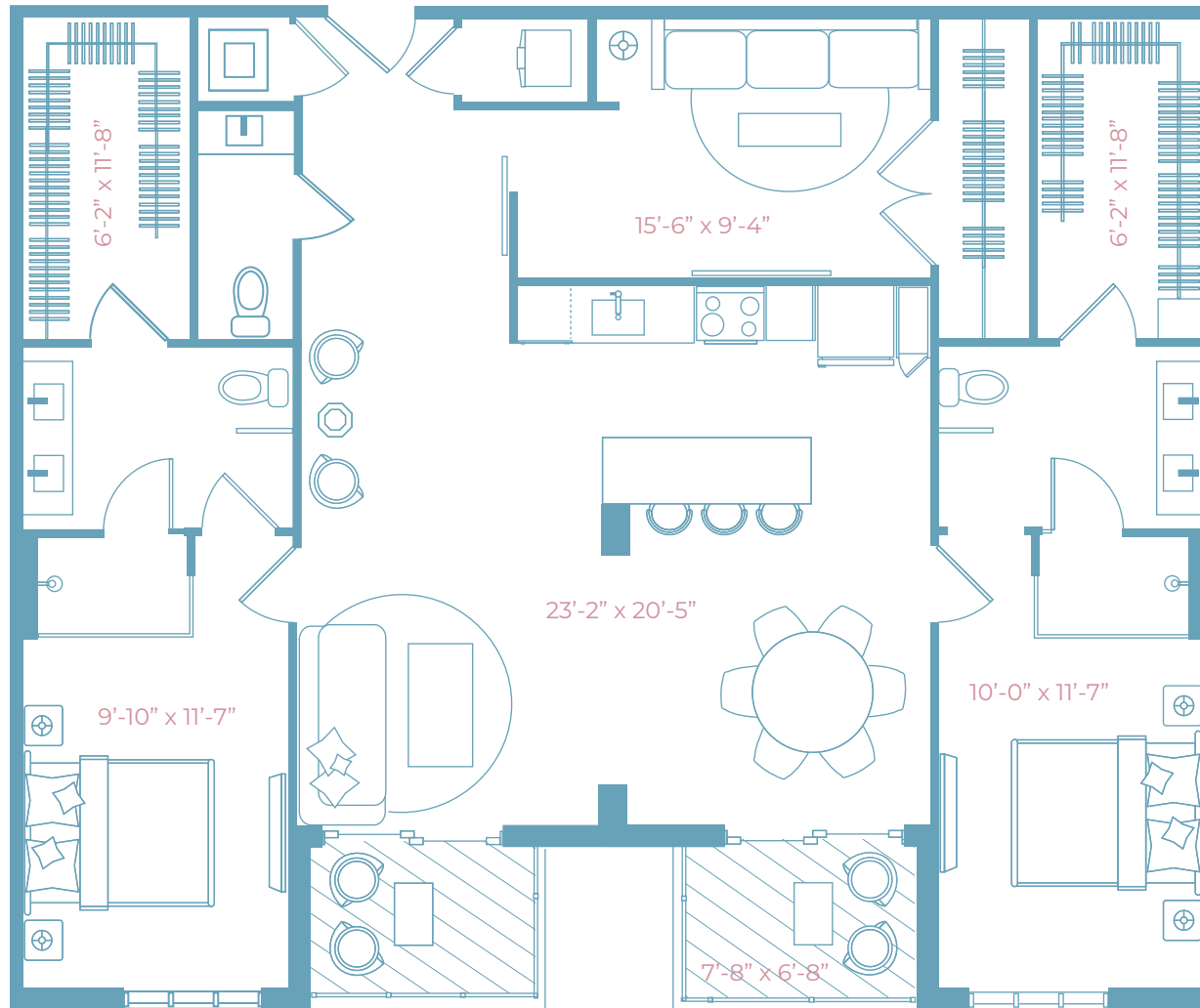
### CHEF-CALIBER KITCHENS

- White COMPAC quartz countertops
- Italian kitchen cabinetry
- Extended quartz island with dining table
- USB charging station
- Full white quartz backsplash
- Pantry
- Multi-feature kitchen faucet
- Samsung **Family Hub** touch screen smart refrigerator
- Samsung smart WIFI enabled with Bluetooth connectivity high efficiency appliances

### SPA INSPIRED BATHS

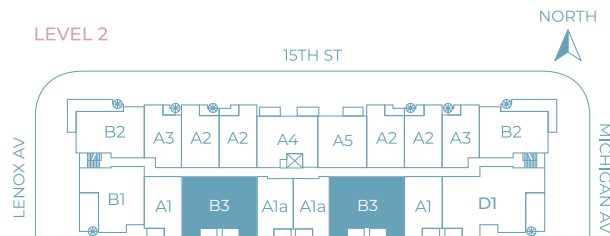
- Contemporary bath hardware
- Italian vanity with cultured white marble countertop
- Front lit mirror
- Artistically designed full height porcelain wet walls in shower
- Open concept bathroom
- Frameless glass shower enclosure
- Rain shower and hand shower in master bath
- Powder room

LEVEL 2



B3	LEVEL 2
<b>2 BEDROOM / DEN / 2.5 BATH</b>	
Gross a/c Area	1476 Sq. Ft.
Balconies	130 Sq. Ft.
<b>TOTAL</b>	<b>1606 Sq. Ft.</b>

- 1 storage locker included
- 2 parking spaces
- Wine refrigerator in kitchen



### SHOMA

Any renderings and depictions are conceptual only and are for the convenience of reference. They should not be relied upon as representations, express or implied, of the final detail of the Units nor the views from any of the Units. ORAL REPRESENTATIONS CANNOT BE RELIED UPON AS CORRECTLY STATING REPRESENTATIONS OF THE DEVELOPER. FOR CORRECT REPRESENTATIONS, MAKE REFERENCE TO THIS BROCHURE AND TO THE DOCUMENTS REQUIRED BY 718.503, FLORIDA STATUTES, TO BE FURNISHED BY A DEVELOPER TO A BUYER OR LESSEE.