

PLANT LEGEND - FRESNO COUNTY

SYMBOL	BOTANICAL NAME	COMMON NAME	SIZE	QUANTITY	SOURCES
AG	Arctostaphylos glauca	Big Berry Manzanita	SIZE	QUANTITY	ANTELOPE VALLEY RESOURCE CONSERVATION NURSERY 10148 WEST AVE. I LANCASTER, CA 93536 PHONE: 661.742.7306 EMAIL: AVRCDB@CARCD.ORG
AF	Asclepias fascicularis	Mexican Whorled Milkweed	SIZE	QUANTITY	
AC	Aster chilensis	California Aster	SIZE	QUANTITY	
ALB	Atriplex lentiformis 'Breweri'	Salt Bush	SIZE	QUANTITY	
BP	Baccharis pilularis 'Pigeon Point'	Pigeon Point Coyote Bush	SIZE	QUANTITY	CENTRAL COAST WILDS 336A GOLF CLUB DRIVE SANTA CRUZ, CA 95060 PHONE: 831.459.0655 EMAIL: INFO@CENTRALCOASTWILDS.COM
BR	Berberis aquifolium Compacta	Compact Oregon Grape	SIZE	QUANTITY	
CC	Calliandra Californica	Baja Fairy Duster	SIZE	QUANTITY	EL NATIVO GROWERS, INC. 200 S. PECKHAM ROAD AZUSA, CA 91702 PHONE: 626.969.8449 EMAIL: SALES@ELNATIVOGROWERS.COM
CB	Ceanothus 'Blue Jeans'	Blue Jeans CA Lilac	SIZE	QUANTITY	
CD	Ceanothus 'Dark Star'	Dark Star CA Lilac	SIZE	QUANTITY	ELKHORN NATIVE PLANT NURSERY 1957B HIGHWAY 1 MOSS LANDING, CA 95039 PHONE: 831.763.1207 WEB SITE CONTACT: WWW.ELKHORNURSERY.COM/CONTACTORDERING
DR	Dendromecon rigida	CA Bush Poppy	SIZE	QUANTITY	
DC	Deschampsia cespitosa	Tufted Hair Grass	SIZE	QUANTITY	LAS PILATAS NURSERY 3232 LAS PILATAS RD SANTA MARGARITA, CA 93453 PHONE: 805.637.9992 EMAIL: PENNY@LAS PILATAS.COM
Z	Epiobium Everetts Choice	CA Fuchsia	SIZE	QUANTITY	
EF	Eriogonum fasciculatum Foliolatum	CA Buckwheat	SIZE	QUANTITY	MANZANITA NURSERY 880 CHALK HILL ROAD SOLVANG, CA 93463 PHONE: 805.688.9492 EMAIL: MANZANITANURSERY@EARTHLINK.NET
EGR	Eriogonum grande Rubescens	Rosy Buckwheat	SIZE	QUANTITY	
EU	Eriogonum umbellatum Polyothum	Sulfer Buckwheat	SIZE	QUANTITY	MATILJA NURSERY 8225 WATERS ROAD MOORPARK, CA 93021 PHONE: 805.333.8604 WEB SITE CONTACT: WWW.MATILJANURSERY.COM/CONTACT-US
ELS	Eriophyllum lanatum	Dwarf Woolly Daisy	SIZE	QUANTITY	
FP	Forestiera Pubescens	Desert Olive	SIZE	QUANTITY	MOCKING BIRD NURSERY 1670 JACKSON ST RIVERSIDE, CA 92504 PHONE: 951.780.3571 EMAIL: INFO@MOCKINGBIRDNURSERY.COM
FKT	Fremontodendron 'Ken Taylor'	Ken Taylor's Flannel Bush	SIZE	QUANTITY	
HA	Heteromeles arbutifolia	Tayon	SIZE	QUANTITY	RANA CREEK WHOLESALE NURSERY 35351 EAST CARMEL VALLEY ROAD CARMEL VALLEY, CA 93924 PHONE: 831.659.2837 EMAIL: NURSERY@RANACREEKNURSERY.COM
JE	Juncus effusus	Common Rush	SIZE	QUANTITY	
JP	Juncus patens	Spreading Rush	SIZE	QUANTITY	SANTA BARBARA NATIVES 11900 CALLE REAL GAVIOTA, CA 93117 PHONE: 805.698.4994 EMAIL: JEFF@SBNATIVES.COM
KA	Keckiella Antirrhinoides	Yellow Bush Penstemon	SIZE	QUANTITY	
MF	Malacothamnus fasciculatus	Bush Mallow	SIZE	QUANTITY	THEODORE PAYNE FOUNDATION FORE WILD FLOWERS AND NATIVE PLANTS 10459 TUXFORD ST SUN VALLEY, CA 91352 PHONE: 818.768.1802 WEB SITE CONTACT: THEODOREPAYNE.ORG/CONTACT
MI	Mimulus aurantiacus	Sticky Monkey Flower	SIZE	QUANTITY	
MR	Muhlenbergia Rigens	Deer Grass	SIZE	QUANTITY	
P	Penstemon heterophyllus BOP	BOP Foothill Penstemon	SIZE	QUANTITY	
PR	Platanus racemosa	California Sycamore	SIZE	QUANTITY	
RC	Romneya coulteri	Matilja Poppy	SIZE	QUANTITY	
SA	Salvia greggii	Greg's Sage	SIZE	QUANTITY	
SB	Salvia Bee's Bliss	Bee's Bliss Sage	SIZE	QUANTITY	
SP	Salvia leucophylla x cleavelandii 'Poza Blue'	Poza Blue Sage	SIZE	QUANTITY	
SCB	Salvia Celestial Blue (Cleavelandii x alpine)	Celestial Blue Sage	SIZE	QUANTITY	
SG	Salvia Gracias	Gracias Sage, Creeping Sage	SIZE	QUANTITY	
SM	Sambucus Mexicana	Blue Elderberry	SIZE	QUANTITY	
SAB	Sphaeralcea ambigua	Desert Mallow/Globe Mallow	SIZE	QUANTITY	
•••••	Stipa Pulchra	Nodding Needle Grass	SIZE	QUANTITY	

APPROX: 900 SF TURF CONVERSION
WATER SAVINGS: 12,000 GALLONS PER YEAR!

SITE NOTES - LAWN REMOVAL:

SITE NOTES ***

1. SITE PREPARATION- SHEET MULCH WHEN POSSIBLE TO REMOVE TURF. COVER EXISTING GRASS WITH 2 LAYERS OF NEWSPAPER (DO NOT UNFOLD LEAVE FOLDED) OR RECYCLED CARDBOARD (CHECK WITH LOCAL LARGE STORES FOR WHEN THEY PUT RECYCLING OUT) ; ADD 1-2" COMPOST; ADD 3" 'ARBOR MULCH' (USUALLY THE LEAST EXPENSIVE TYPE FROM GROUND UP TREE SERVICES). LET SET 1 - 2 MONTHS WITH 1X PER WEEK WATER.
 2. INSTALL PLANT MATERIAL ADD OR SUBTRACT PLANTS IF NEEDED TO FILL YOUR SITE - THIS SITE IS 900 SF, PULL BACK MULCH, DIG HOLE, ADD PLANT AND PULL MULCH BACK. DO NOT MULCH RIGHT TO EDGE OF PLANT.INSTALL DECK
 3. LAYOUT IRRIGATION. RECOMMENDED SWITCH POP-UP IRRIGATION HEADS FOR LAWNS TO HUNTER MP ROTATOR HEADS.
- *** PLEASE CONTACT THE HABITAT CORRIDOR PROJECT WITH ANY QUESTIONS OR COMMENTS AT INFO@HABITATCORRIDORPROJECT.ORG

NOTE FROM THE DESIGNER:

We have prepared this lawn conversion project for your use to enhance biodiversity in your garden and help save water by taking out your thirsty lawn. This garden saves over 12,000 gallons of water per year!!! And provides food and cover for many pollinators and birds local to Fresno County. Enjoy! Disclaimer: The Habitat Corridor Project is not responsible for the success of this garden. We only suggest these plants and design to enhance your yard. Thank you and let us know how it goes at info@habitatcorridorproject.org.

ZAUSCHNERIA CANA
(CALIFORNIA FUCHSIA)

ARCTOSTAPHYLOS 'HOWARD MCMINN'
(MCMINN MANZANITA)

CEANOTHUS 'DARK STAR'
(CAL. LILAC)

SALVIA 'CELESTIAL BLUE'
(BLUE SAGE)

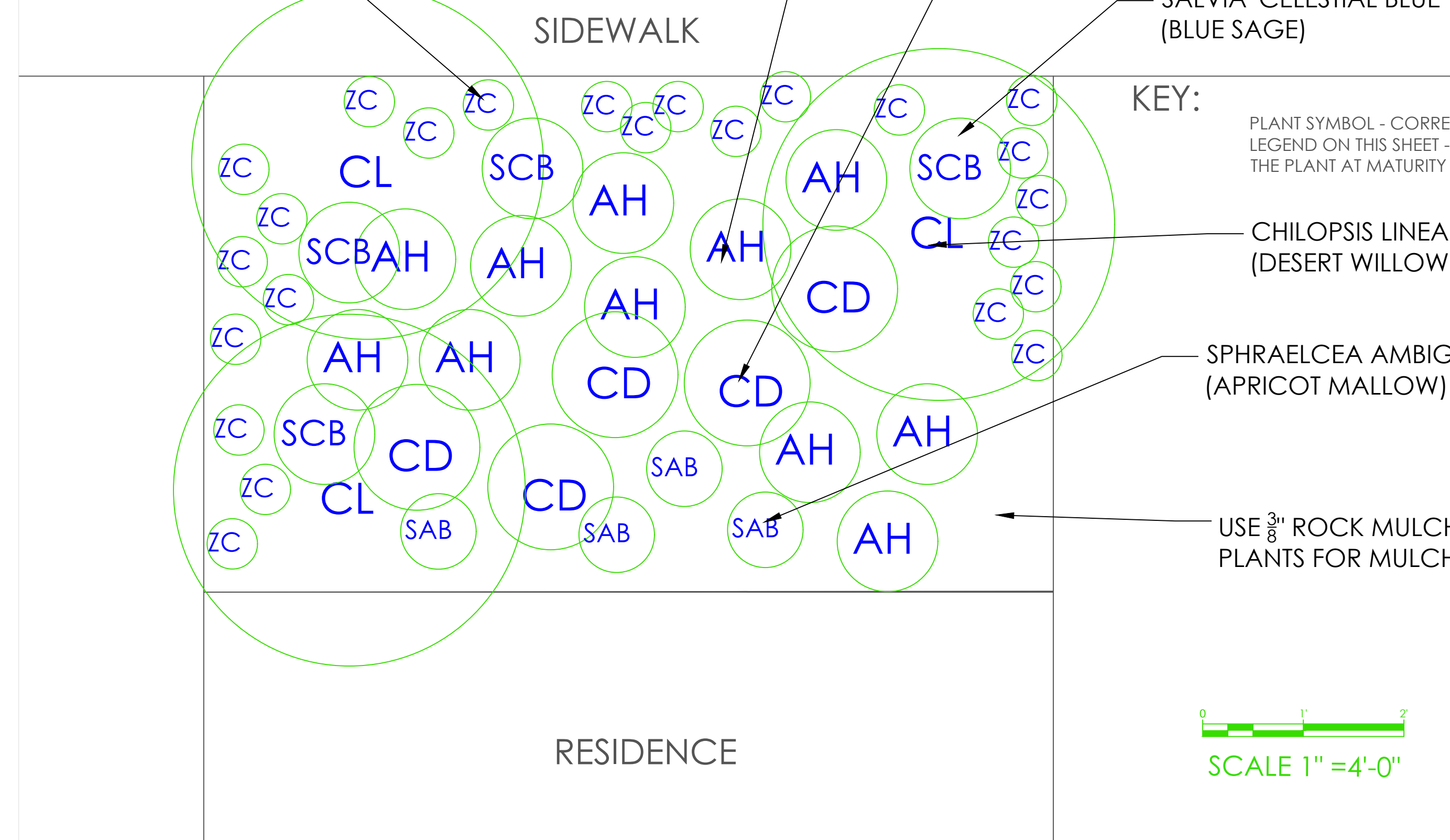
KEY:
PLANT SYMBOL - CORRESPONDS TO PLANT LEGEND ON THIS SHEET - CIRCLE SIZE = THE SIZE OF THE PLANT AT MATURITY

CHILOPSIS LINEARIS
(DESERT WILLOW)

SPHRAELCEA AMBIGUA
(APRICOT MALLOW)

USE 3/8" ROCK MULCH BETWEEN PLANTS FOR MULCH

SCALE 1" = 4'-0"



PLAN VIEW - SHRUBS WITH COLOR

HABITAT FOR HUMANITY
EXAMPLE RESIDENCE
FRESNO COUNTY, CALIFORNIA

No.	Revision/Issue	Date

DESIGNED BY:
The Habitat Corridor
Project
habitatcorridorproject.org
PROJECT CONTACT:
APRIL OWENS
707.634.6192

Project habitat sunny	Sheet L-1
Date APRIL 10, 2017	
Scale 1"=4'-0"	