



INFLUENZA WATCH

Week 51
Ending 12/23/2017

The purpose of the weekly **Influenza Watch** is to summarize current influenza surveillance in San Diego County. **Please note that reported weekly data are preliminary and may change due to delayed submissions and additional laboratory results.**

Report Contents

- Page 1: Overview & Indicators
- Page 2: Virus Characteristics
- Pages 3-7: Trend graphs
- Page 7: Reporting Information

Current Week

Current Week 51 (ending 12/23/2017)

- 2,227 new influenza detections reported: *Elevated level*
- 7% influenza-like-illness (ILI) among emergency department visits: *Elevated level*
- 6 new influenza-related deaths reported this week
- 20 new ICU cases reported this week
- 6% of deaths registered with pneumonia and/or influenza: *Expected level*

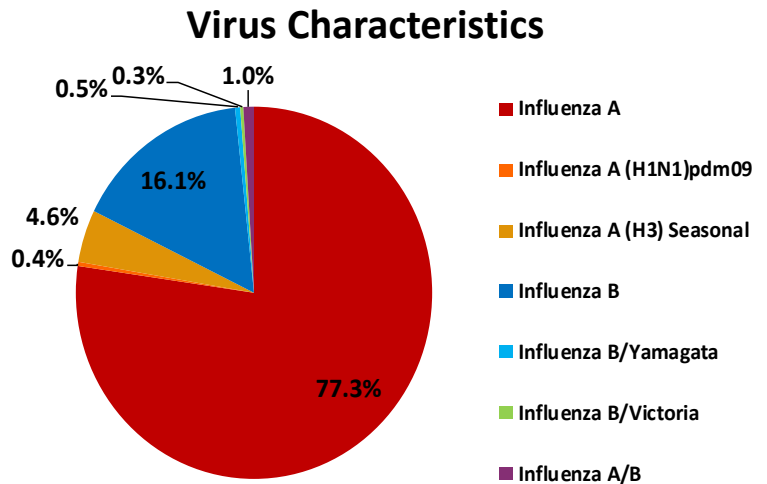
Current Season Summary

3,873
Total Cases

37
ICU Cases

11
Deaths

24
Outbreaks*



* At least one case of laboratory-confirmed influenza in a setting experiencing ≥2 cases of influenza like illness (ILI) within a 72-hour period.

Table 1. Influenza Surveillance Indicators

Indicator	FY 2017-18*			FY 2016-17		Prior 3-Year Average**	
	Week 51	Week 50	FYTD [#]	Week 51	FYTD [#]	Week 51	FYTD [#]
	All influenza detections reported (rapid or PCR)	2,227	563	3,873	148	599	104
Percent of emergency department visits for ILI	7%	5%		4%		4%	
Percent of deaths registered with pneumonia and/or influenza	6%	7%		10%		7%	
Number of influenza-related deaths reported [^]	6	1	11	0	4	1	2

[#] FYTD=Fiscal Year To Date (FY is July 1- June 30, Weeks 27-26). Total deaths reported in prior years: 87 in 2016-17, 68 in 2015-16, and 97 in 2014-15.

* Previous weeks case counts or percentages may change due to delayed processing or reporting.

** Includes FYs 2014-15, 2015-16, and 2016-17.

[^] Current FY deaths are shown by week of report; by week of death for prior FYs.

Influenza Outbreak Control and Reporting

The recent surge in influenza cases in San Diego County documented in this issue of the Influenza Watch coincides with increased reports of outbreaks in local institutional settings. Preventing transmission of influenza viruses and other infectious agents within healthcare settings, including long-term care facilities (LTCFs), requires a multi-faceted approach that includes the following: vaccination, symptom monitoring, testing, infection control, antiviral treatment, and antiviral prophylaxis.

The San Diego County Public Health Officer recently sent a [letter](#) to LTCF administrators regarding influenza outbreak prevention, control and reporting. Useful resources highlighted in the letter include:

- [Recommendations for the Prevention and Control of Influenza in California LTCFs \(CDPH\)](#)
- [Influenza Outbreaks in LTCFs AFL 17-02 \(CDPH\)](#)
- [Toolkit for LTCF Employers \(CDC\)](#)
- [Interim Guidance for Influenza Outbreak Management in LTCFs \(CDC\)](#)
- [ACIP Recommendations on Prevention and Control of Influenza \(CDC\)](#)

Clinicians frequently have questions about the use of antiviral medications for influenza treatment and prophylaxis in LTCFs. CDC recommends that LTCF residents who have confirmed or suspected influenza should receive antiviral treatment immediately, even if laboratory confirmation of influenza is pending. CDC also recommends that all eligible residents in the entire LTCF (not just currently impacted wards) should receive antiviral chemoprophylaxis as soon as an influenza outbreak is identified.

The latest CDC antiviral recommendations are available on the [CDC influenza antiviral drugs web page for health professionals](#). Clinical practice guidelines on the diagnosis, treatment, chemoprophylaxis, and institutional outbreak management of seasonal influenza from the Infectious Disease Society of America may be found [here](#). Outbreaks should be promptly reported to the County Epidemiology Program at (619) 692-8499.

Table 2. Influenza Detections Reported, FY 2017-18*

Positive Test Type/Subtype	Week 51	Total FY-To-Date
Influenza A†	1,874	2,994
Influenza A(H1N1) Pandemic 2009	1	14
Influenza A (H3) Seasonal	35	177
Influenza B†	299	622
Influenza B/Victoria	0	11
Influenza B/Yamagata	0	18
Influenza A/B†	18	37
Total	2,227	3,873

* FY is July 1 - June 30.

† No further characterization performed, or results were not yet available at time of publication.

Note: Totals may change due to further laboratory findings.

Influenza Watch

Figure 1. Percent of Emergency Department Visits for Influenza-like Illness by Week and FY

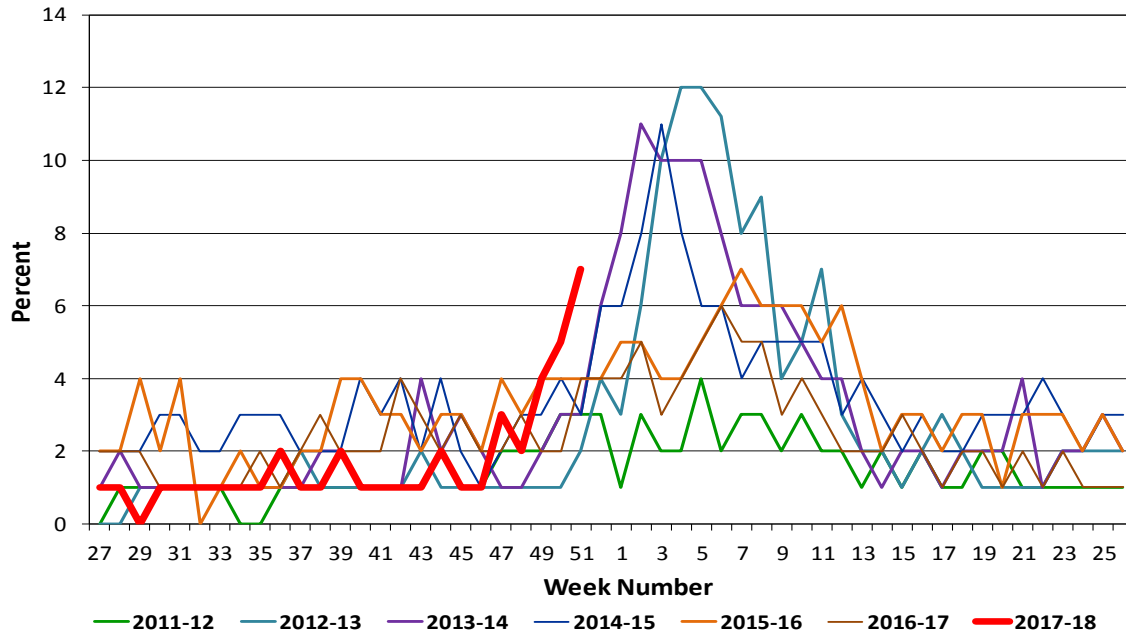
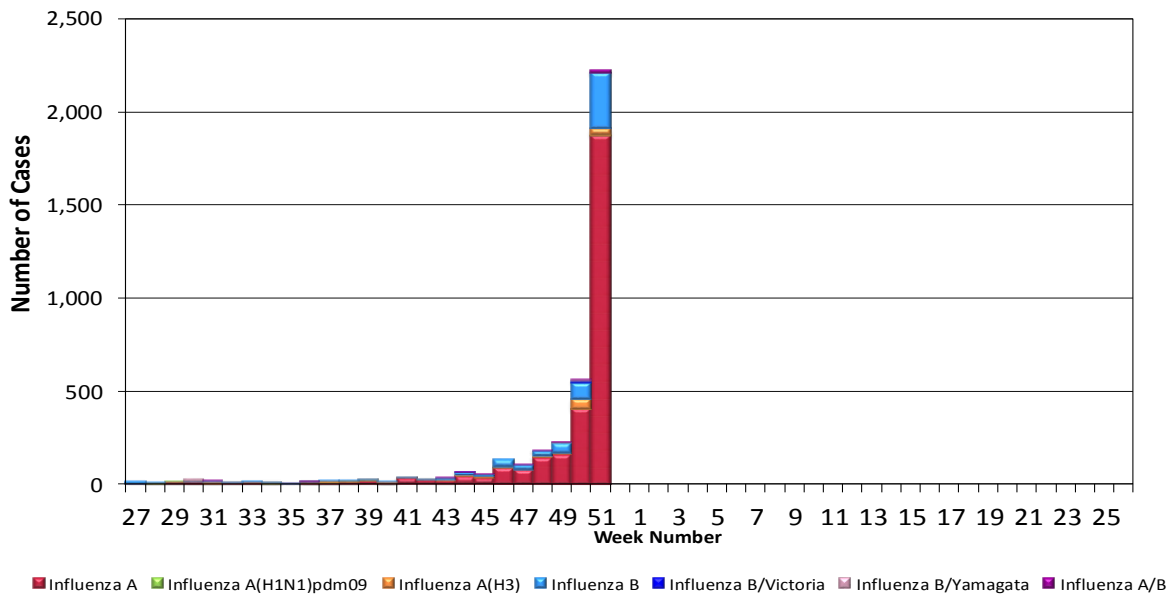


Figure 2. San Diego County Influenza Detections by Type and Week of Report, 2017-18 FYTD (N=3,873)



Influenza Watch

Figure 3. Percent of Reported Influenza Cases by Age Group and Season, 2011-12 to 2017-18 FYTD

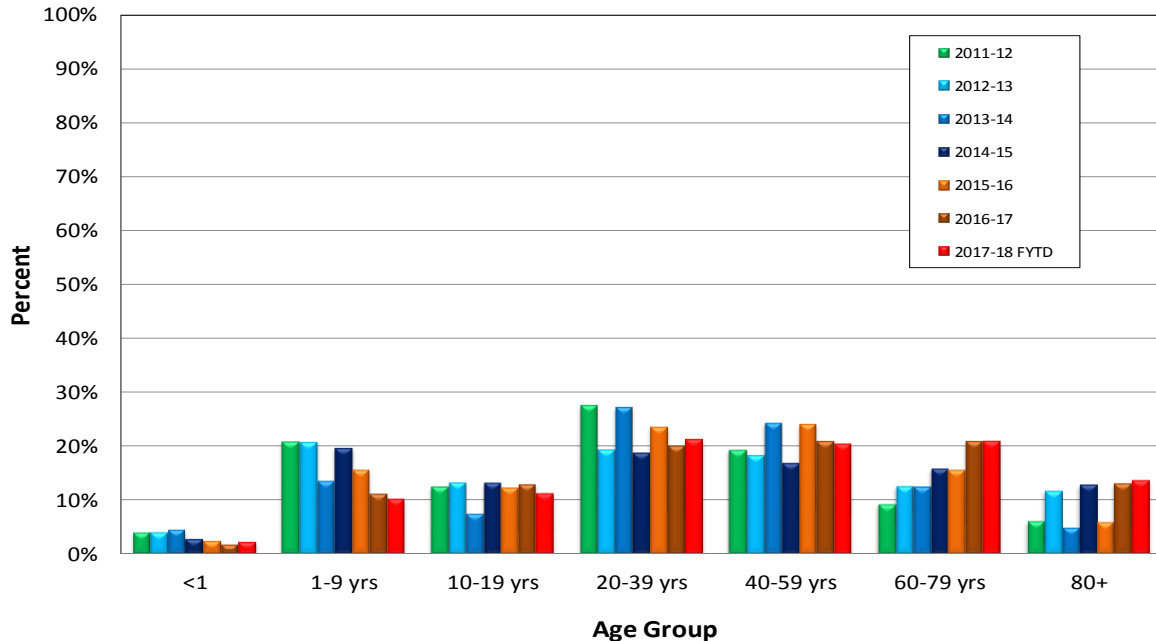
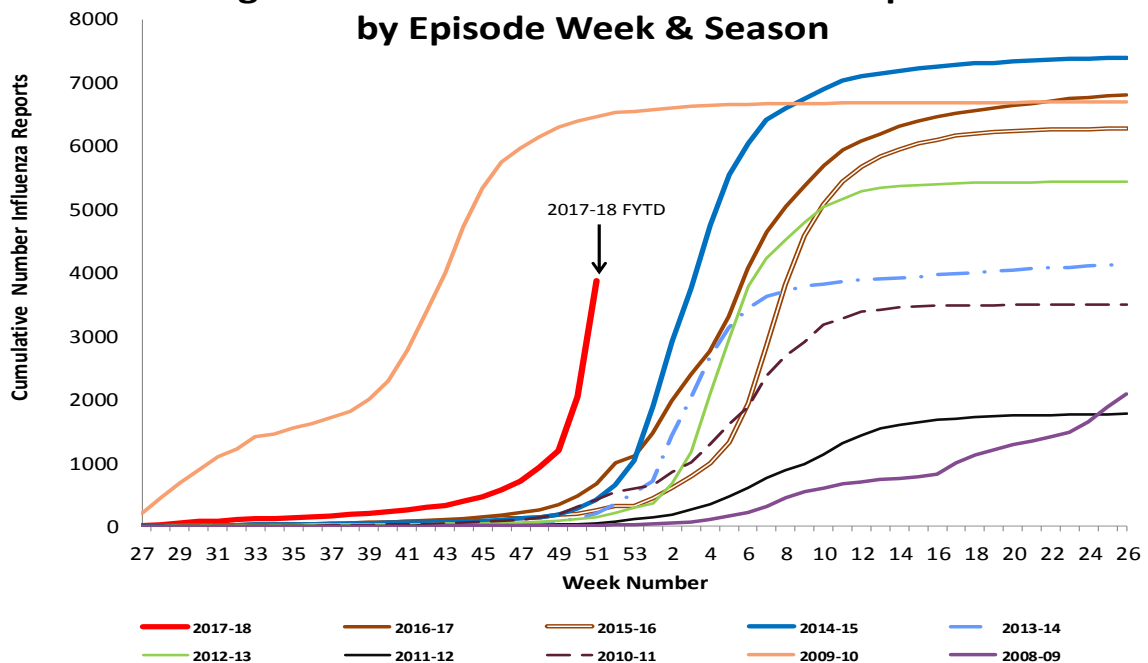


Figure 4. Cumulative Influenza Case Reports by Episode Week & Season



Influenza Watch

Figure 5. Percent of San Diego County Emergency Department Visits for Influenza-like Illness by Week and FY Compared to 5-Year Baseline & Upper 95% Threshold Values (Serfling Method)

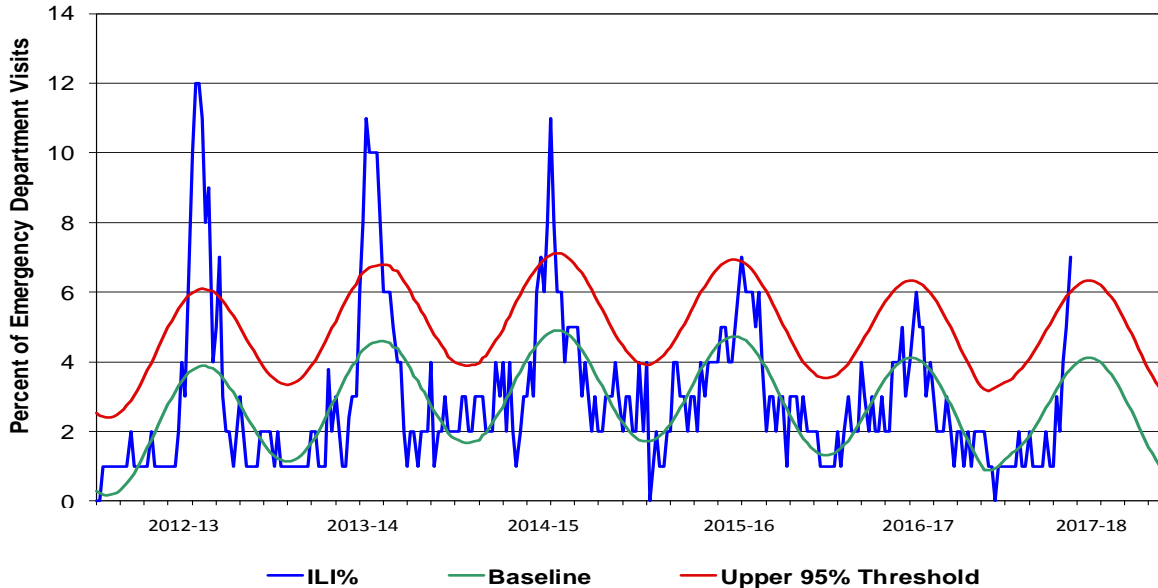
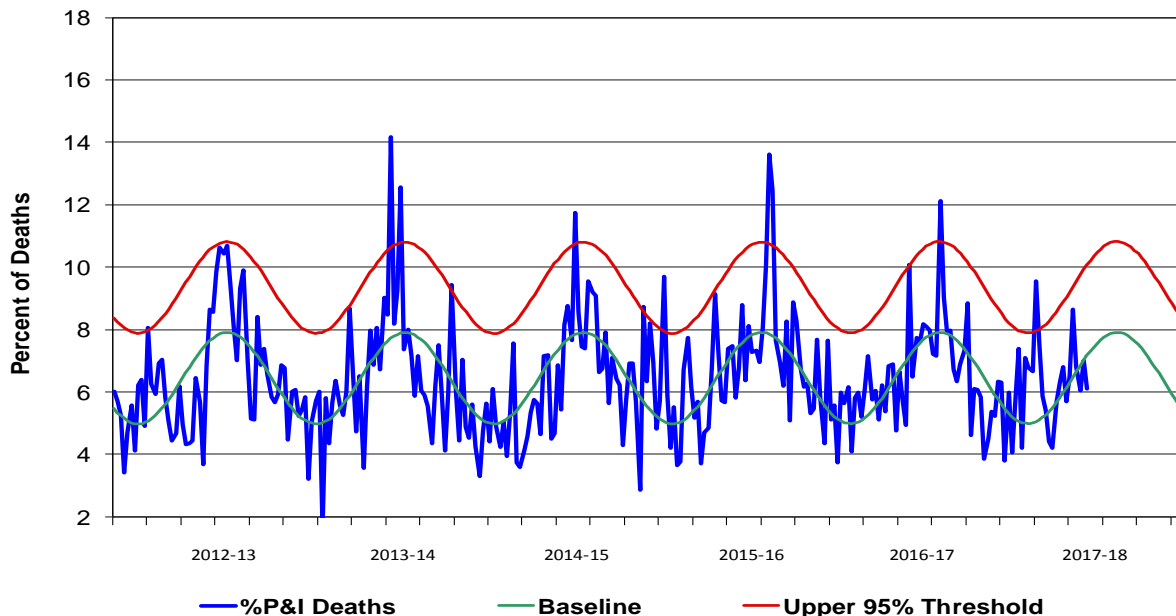


Figure 6. Percent of San Diego County Deaths Registered with Pneumonia and/or Influenza by Week and FY Compared to Prior 5-Year Baseline & Upper 95% Threshold Values (Serfling Method)



Influenza Watch

Figure 7. Influenza Deaths by Type and Season

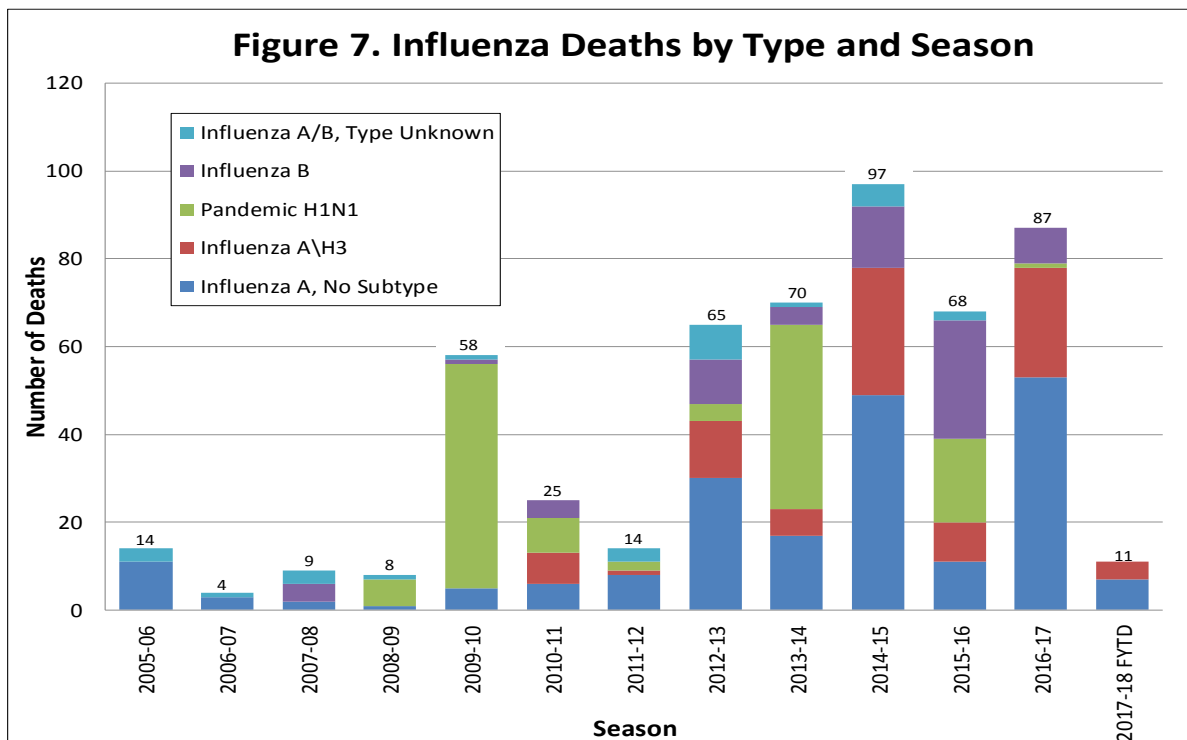


Figure 8. Influenza Deaths by Age and Season

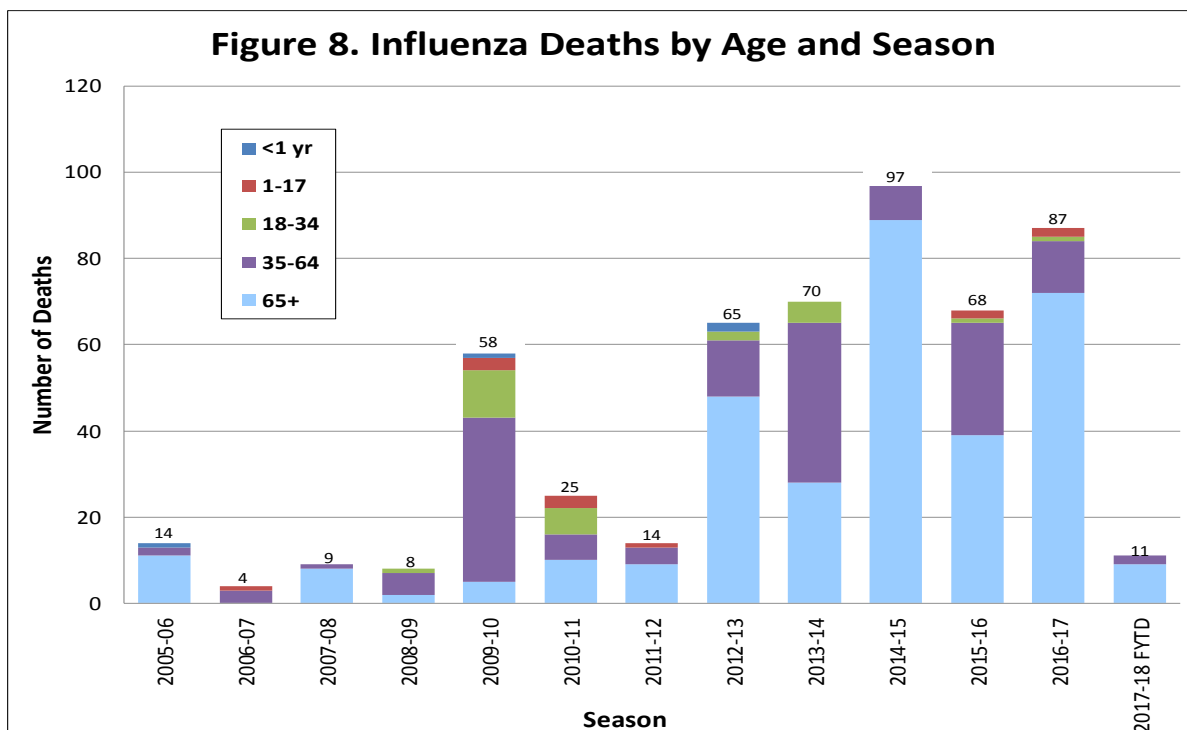
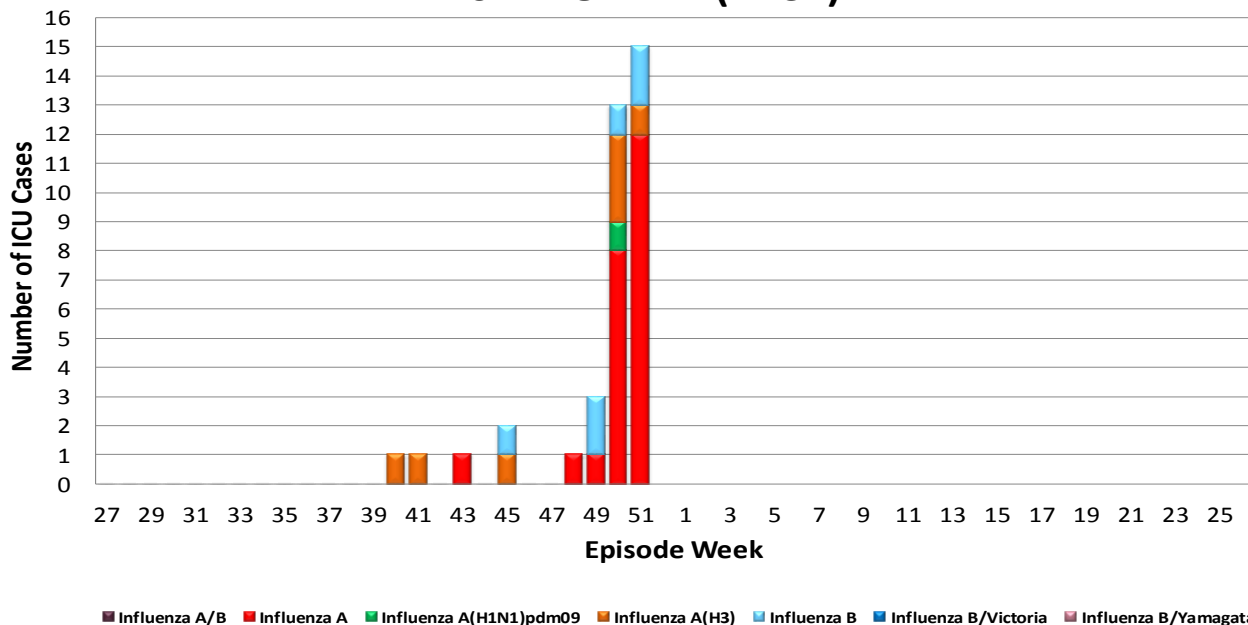


Figure 9. Number of Influenza Cases Requiring ICU Care by Episode Week and Type of Influenza, 2017-18 FYTD (N=37)



Episode week is the week of symptom onset, or earliest available date in which the case is identified.

Influenza Reporting in San Diego County

Local providers are encouraged to report laboratory positive influenza detections to the County Epidemiology Program by **FAX (858) 715-6458**. Please fax a [Case Report](#) Form and/or a printed laboratory result, and indicate if the patient was admitted to ICU or died, and/or is a resident of a congregate living facility.

For questions regarding sending specimens to Public Health Laboratory (PHL), call (619) 692-8500. Click here for the updated PHL [PCR Test Request Form](#). Contact the Epidemiology Program with any questions at **(619) 692-8499** or by email to: EpiDiv.HHSA@sdcounty.ca.gov.

Resources

San Diego County Influenza Surveillance Weekly [Slide Deck](#) - presentation version of this report

County of San Diego Immunization Program www.sdiz.org

California Department of Public Health [Influenza](#)

Centers for Disease Control and Prevention Influenza Surveillance [Weekly Report](#)