

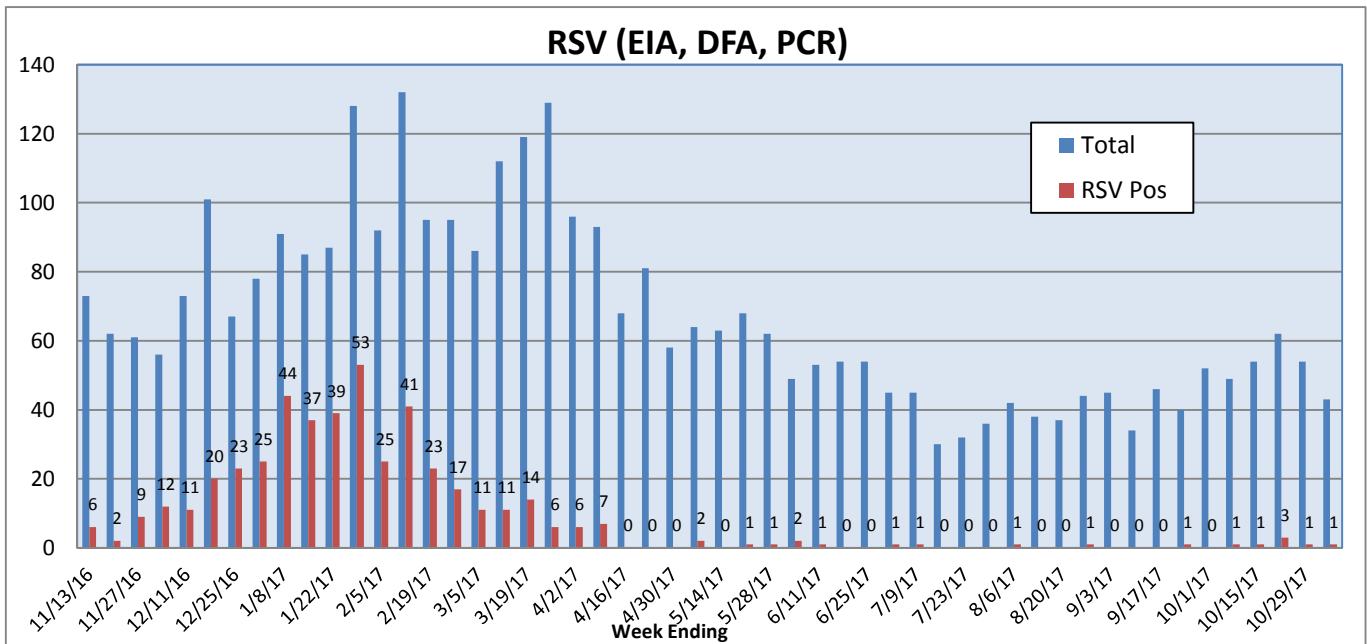
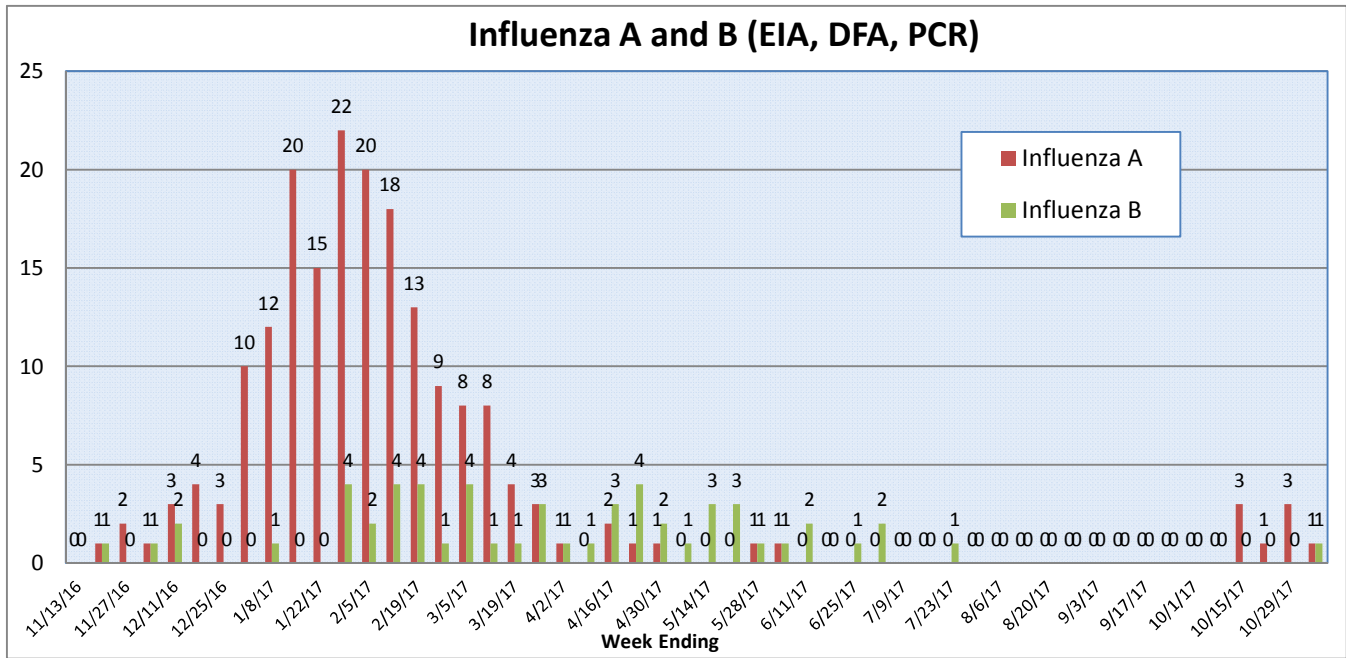
Pathogens Report

The following report is a listing of selected pathogens detected at Rady Children's Hospital Laboratory. The report includes data from adult and pediatric specimens collected locally.

Week of October 30 to November 5, 2017

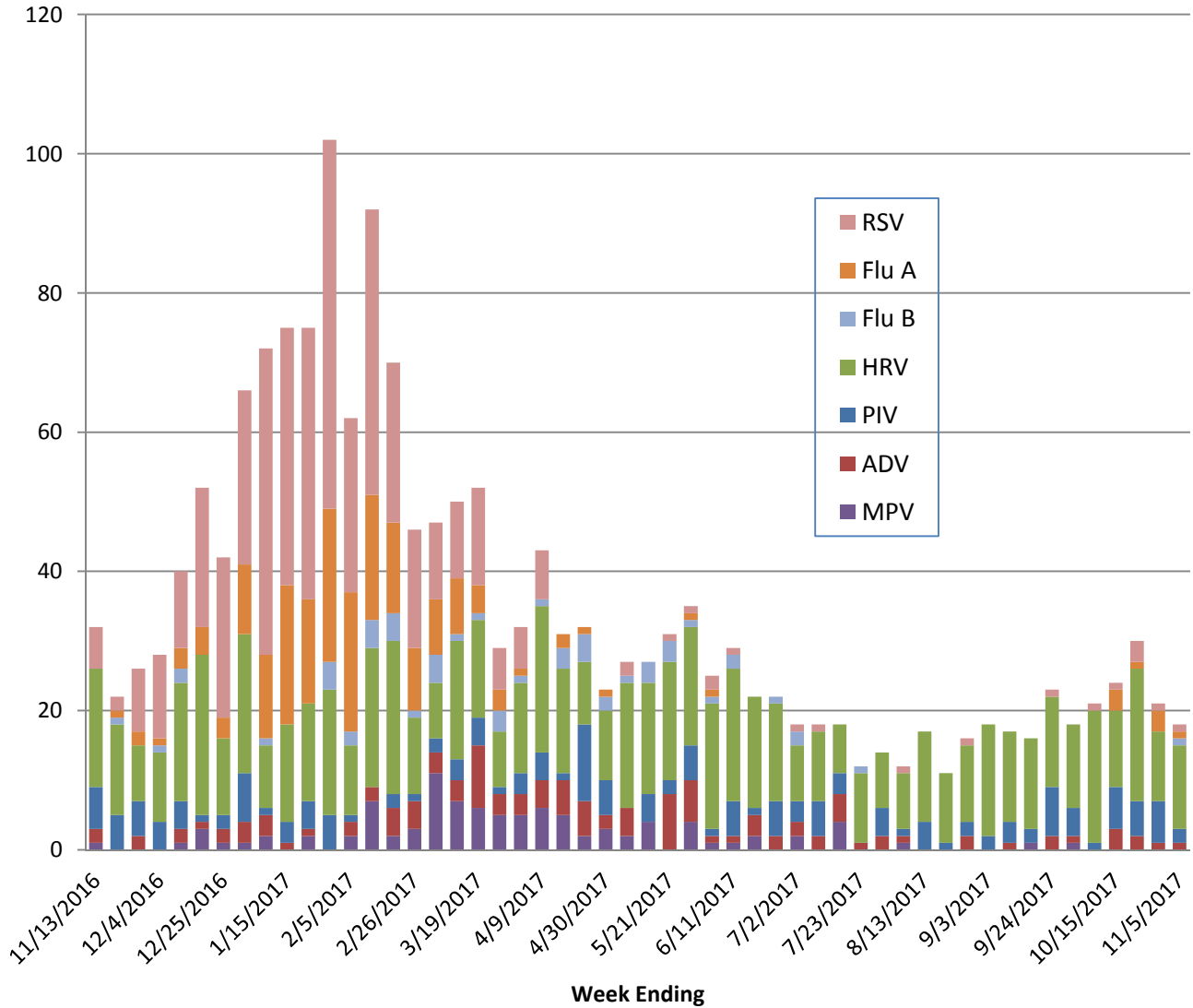
	Positive Tests Current Week	Total Tests Current Week	Positive Tests YTD*	Total Tests YTD*
RSV (DFA and PCR)	1	43	7	262
Influenza A (EIA, DFA, and PCR)	1	65	8	312
Influenza B (EIA, DFA, and PCR)	1	65	1	312
Parainfluenza (PCR and DFA)	2	42	20	240
Adenovirus (PCR and DFA)	1	42	7	240
Rhinovirus (PCR)	12	35	71	201
Metapneumovirus (PCR)	0	35	0	201
B. pertussis/parapertussis (PCR)	5	55	18	326
Enterovirus, CSF (PCR)	0	8	6	39

*From October 2, 2017.

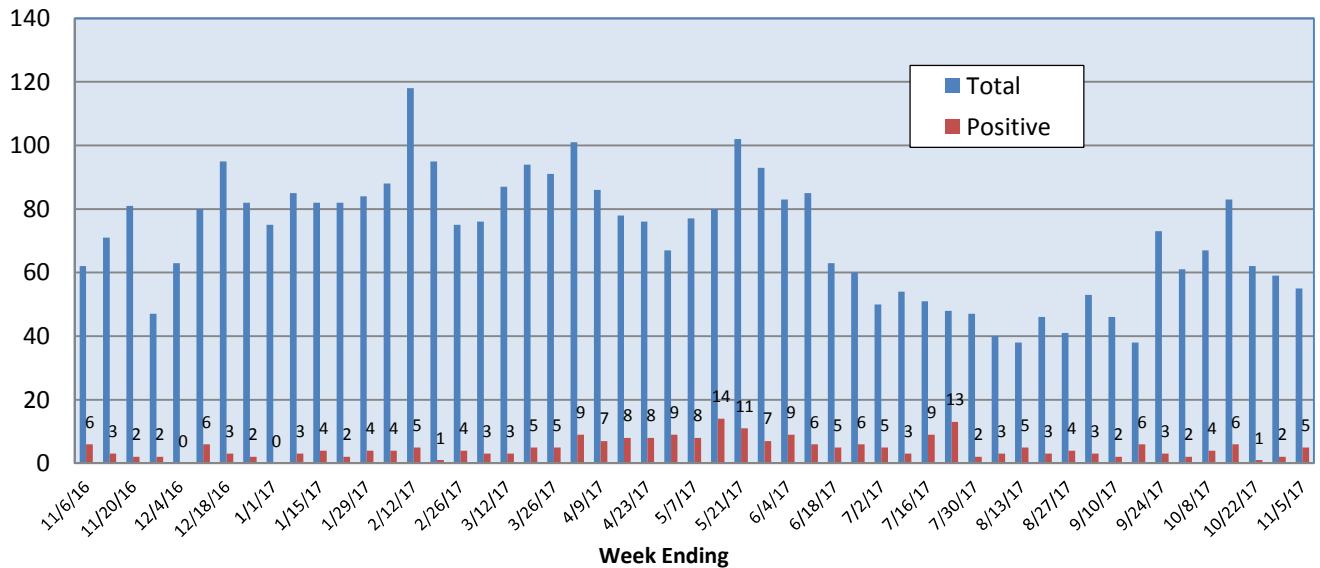


Pathogens Report

Positive Respiratory Viruses by Week



B. pertussis/parapertussis PCR



Pathogens Report

