



INFLUENZA WATCH

Week 46
Ending 11/18/2017

The purpose of the weekly *Influenza Watch* is to summarize current influenza surveillance in San Diego County. **Please note that reported weekly data are preliminary and may change due to delayed submissions and additional laboratory results.**

Report Contents

- Page 1: Overview & Indicators
- Page 2: Virus Characteristics
- Pages 3-7: Trend graphs
- Page 7: Reporting Information

Current Week

Current Week 46 (ending 11/18/2017)

- 133 new influenza detections reported: *Elevated level*
- 1% influenza-like-illness (ILI) among emergency department visits: *Expected level*
- 1 new influenza-related death reported this week
- No new ICU cases reported this week
- 7% of deaths registered with pneumonia and/or influenza: *Expected level*

Current Season Summary

574
Total Cases

5
ICU Cases

4
Deaths

2
Outbreaks

Virus Characteristics

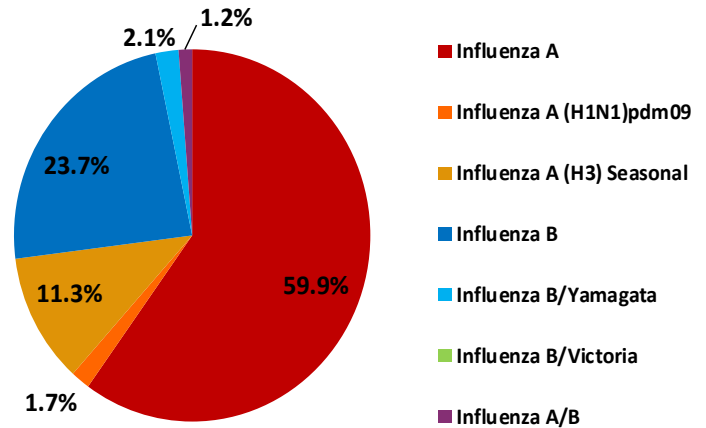


Table 1. Influenza Surveillance Indicators

Indicator	FY 2017-18*			FY 2016-17		Prior 3-Year Average**	
	Week 46	Week 45	FYTD#	Week 46	FYTD#	Week 46	FYTD#
All influenza detections reported (rapid or PCR)	133	58	574	30	174	20	133
Percent of emergency department visits for ILI	1%	1%		2%		2%	
Percent of deaths registered with pneumonia and/or influenza	7%	6%		7%		7%	
Number of influenza-related deaths reported^	1	1	4	0	1	0	<1

* FYTD=Fiscal Year To Date (FY is July 1- June 30, Weeks 27-26). Total deaths reported in prior years: 87 in 2016-17, 68 in 2015-16, and 97 in 2014-15.

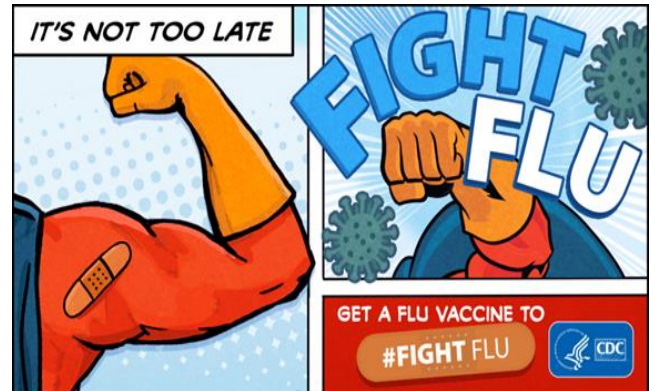
* Previous weeks case counts or percentages may change due to delayed processing or reporting.

** Includes FYs 2014-15, 2015-16, and 2016-17.

^ Current FY deaths are shown by week of report; by week of death for prior FYs.

National Influenza Vaccination Week is Coming!

National Influenza Vaccination Week (NIVW), scheduled for **December 3-9, 2017**, provides an opportunity to remind everyone 6 months and older that it's not too late to get a flu vaccine. NIVW is a national observance established in 2005 by the Centers for Disease Control and Prevention (CDC) to highlight the importance of continuing influenza vaccination after the holiday season into January and beyond. Learn more by going to the [CDC NIVW webpage](http://www.cdc.gov/nivw).



Some of the available resources include:

[Frequently Asked Questions 2017-18 Influenza Season](#)

[NIVW Digital Media Toolkit](#) – newsletter and social media messages, flyers, and posters for use during NIVW

[NIVW Key Messages](#) - key messages to highlight the importance of continuing flu vaccination throughout the season

[NIVW Videos](#) – public service announcements in English and Spanish

[NIVW Web Tools](#) – flu vaccine finder widget, Facebook images, buttons, banners, & badges for download

[Resources for Faith-Based and Community Organizations](#) – English and Spanish resource materials

Table 2. Influenza Detections Reported, FY 2017-18*

Positive Test Type/Subtype	Week 46	Total FY-To-Date
Influenza A†	91	344
Influenza A(H1N1) Pandemic 2009	1	10
Influenza A (H3) Seasonal	2	65
Influenza B†	39	136
Influenza B/Victoria	0	0
Influenza B/Yamagata	0	12
Influenza A/B†	0	7
Total	133	574

* FY is July 1- June 30.

† No further characterization performed, or results were not yet available at time of publication.

Note: Totals may change due to further laboratory findings.

Influenza Watch

Figure 1. Percent of Emergency Department Visits for Influenza-like Illness by Week and FY

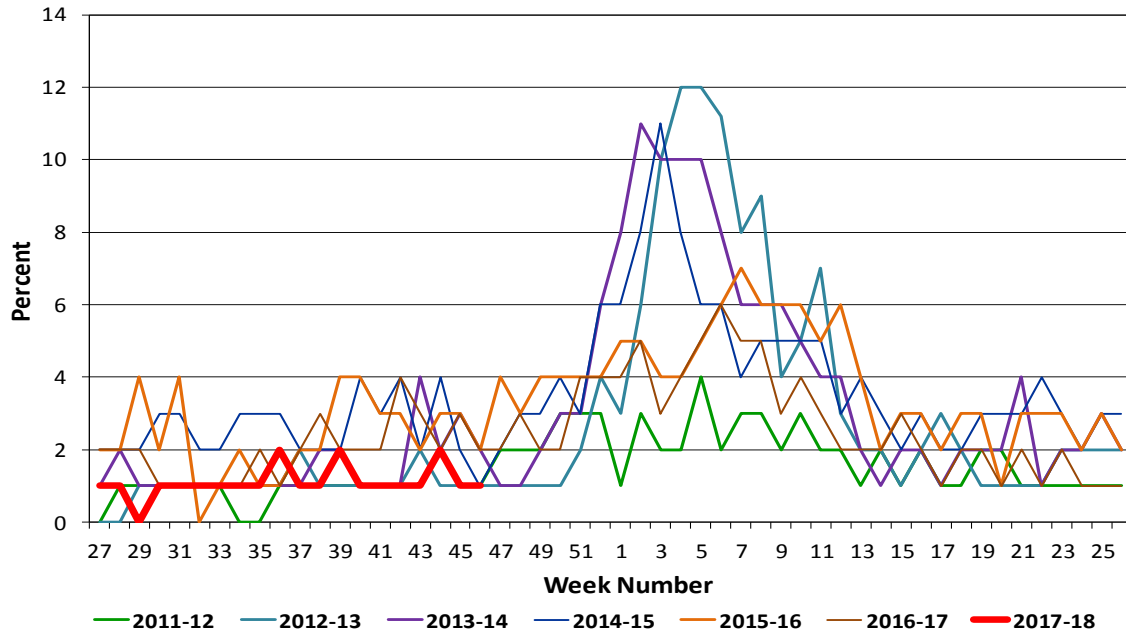
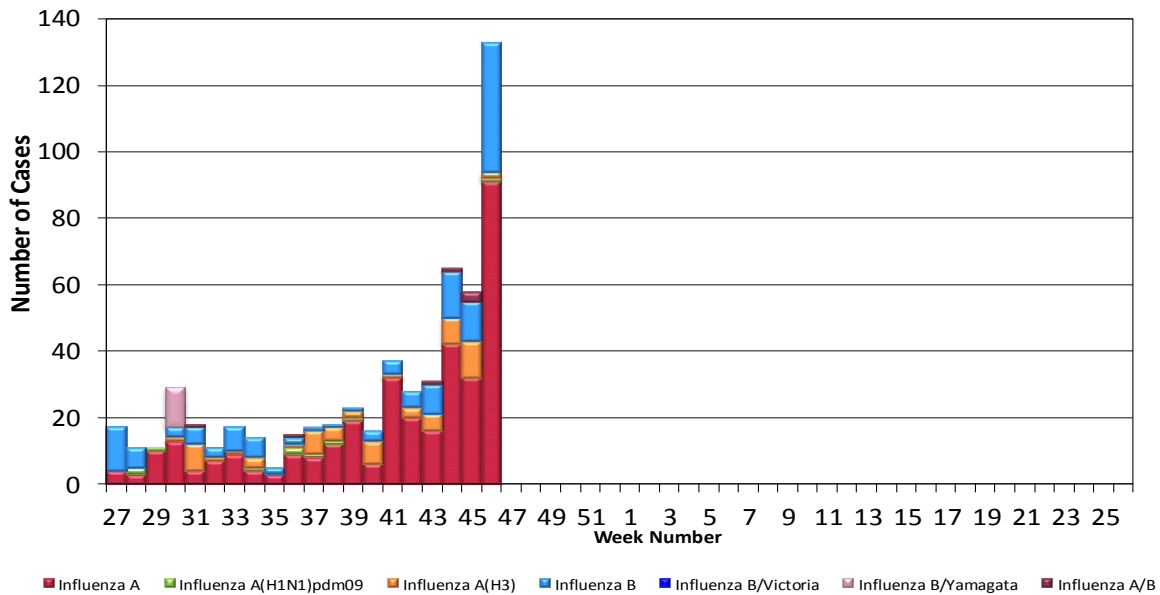


Figure 2. San Diego County Influenza Detections by Type and Week of Report, 2017-18 FYTD (N=574)



Influenza Watch

Figure 3. Percent of Reported Influenza Cases by Age Group and Season, 2011-12 to 2017-18 FYTD

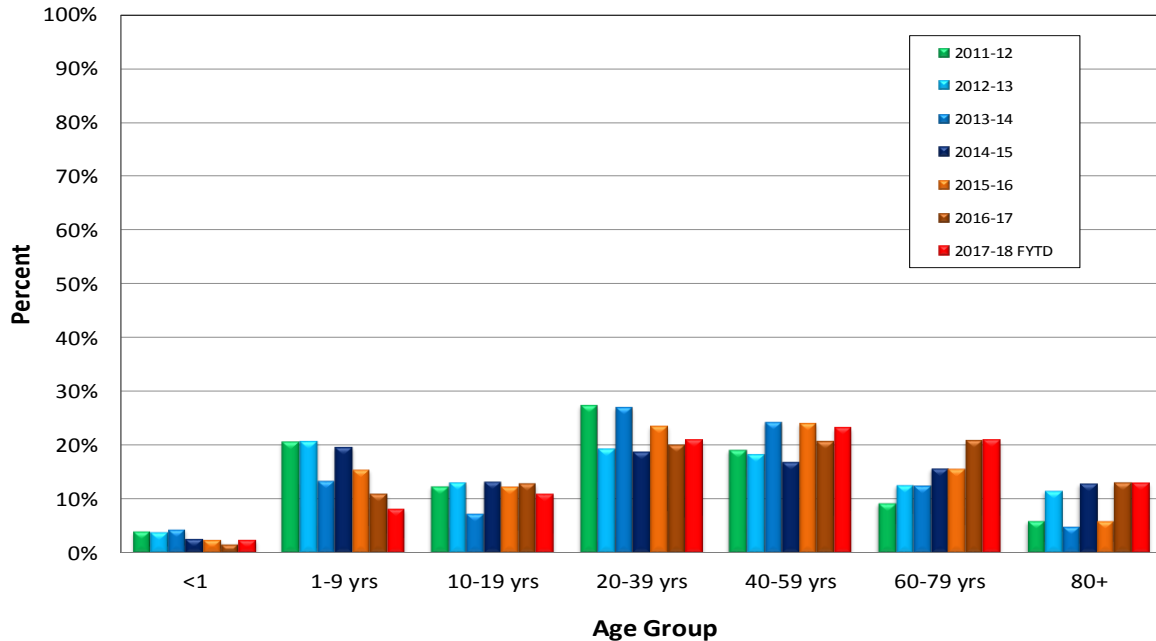
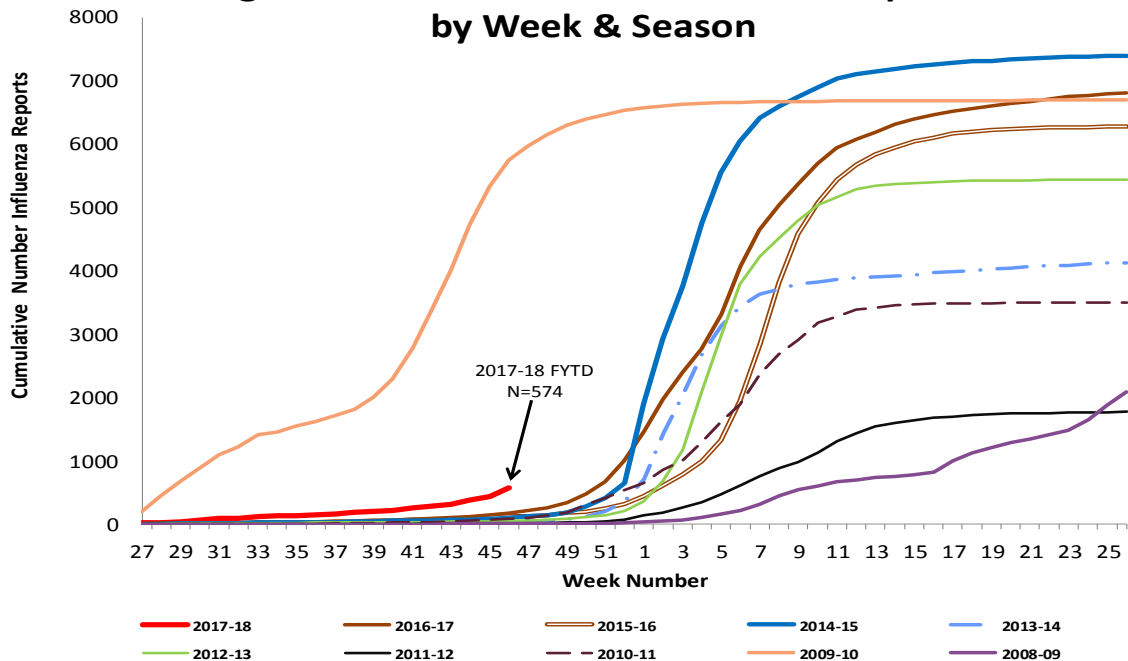


Figure 4. Cumulative Influenza Case Reports by Week & Season



Influenza Watch

Figure 5. Percent of San Diego County Emergency Department Visits for Influenza-like Illness by Week and FY Compared to 5-Year Baseline & Upper 95% Threshold Values (Serfling Method)

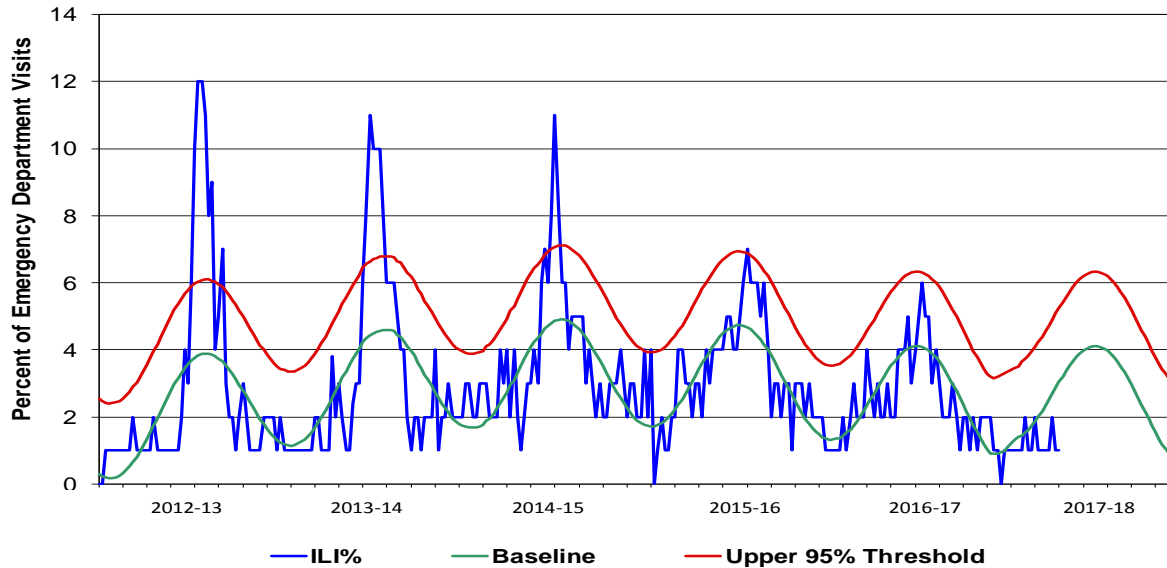
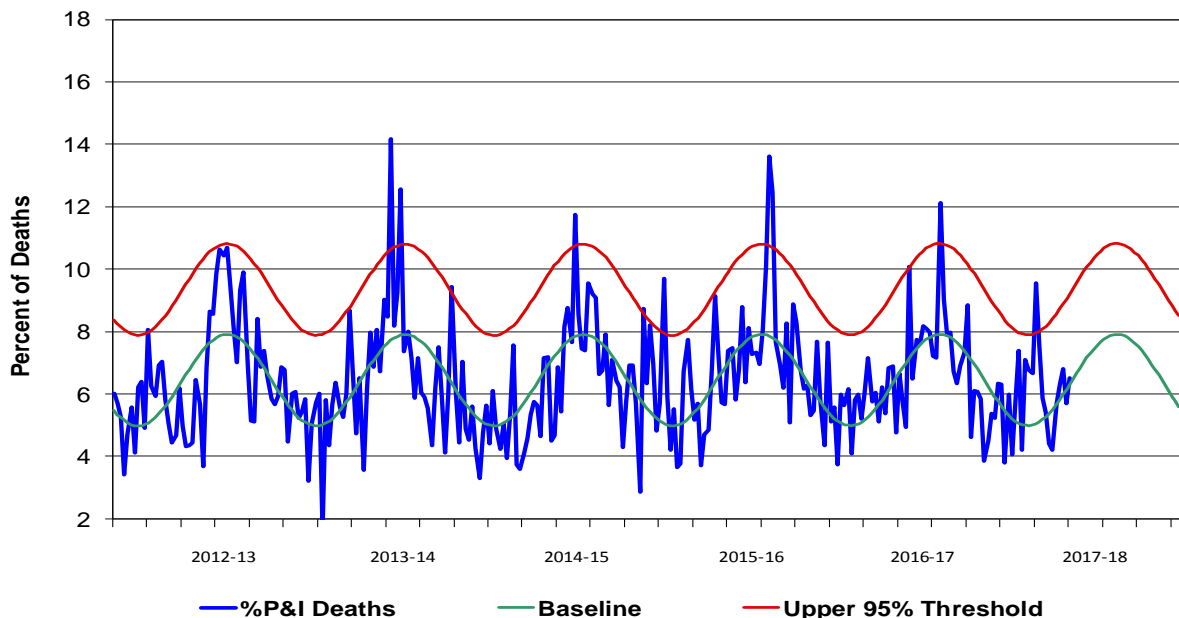


Figure 6. Percent of San Diego County Deaths Registered with Pneumonia and/or Influenza by Week and FY Compared to Prior 5-Year Baseline & Upper 95% Threshold Values (Serfling Method)



Influenza Watch

Figure 7. Influenza Deaths by Type and Season

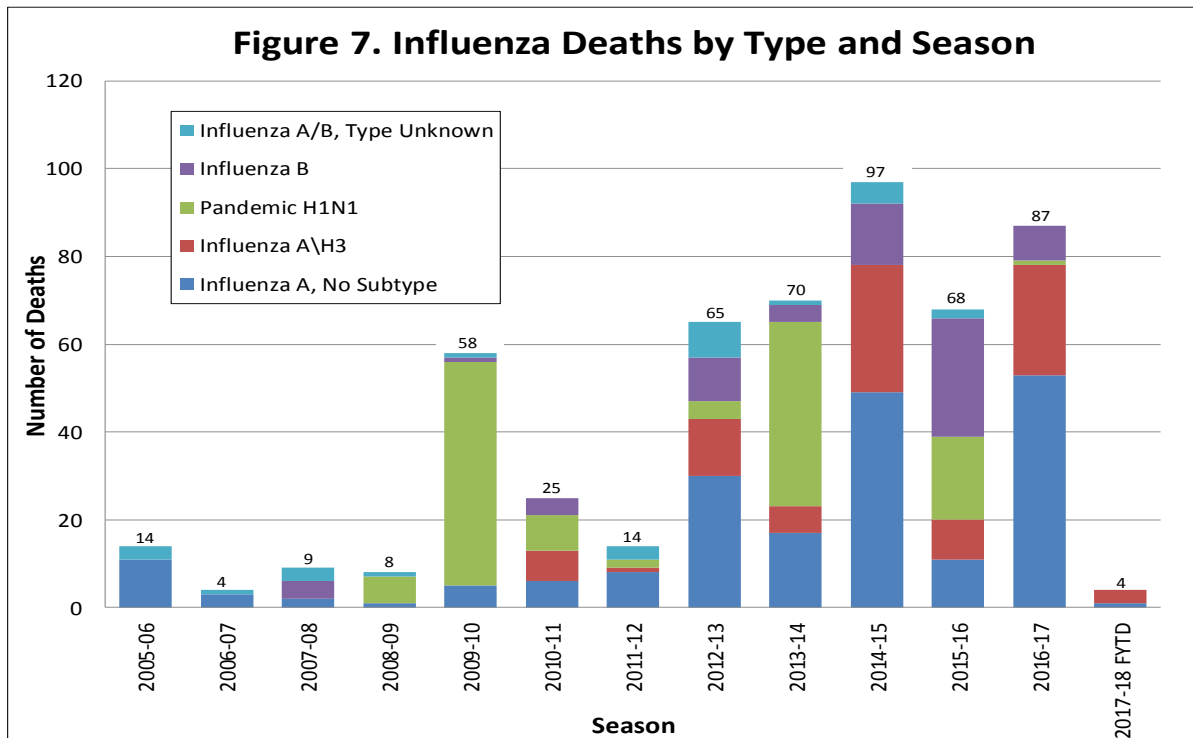


Figure 8. Influenza Deaths by Age and Season

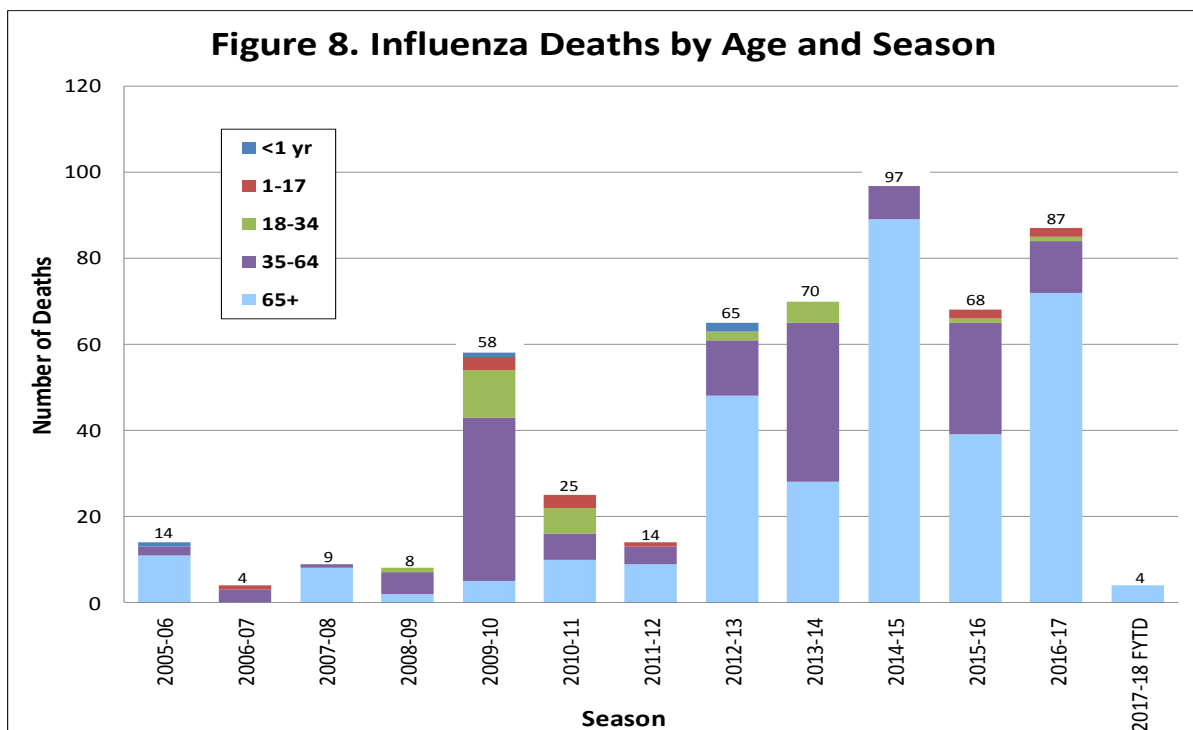
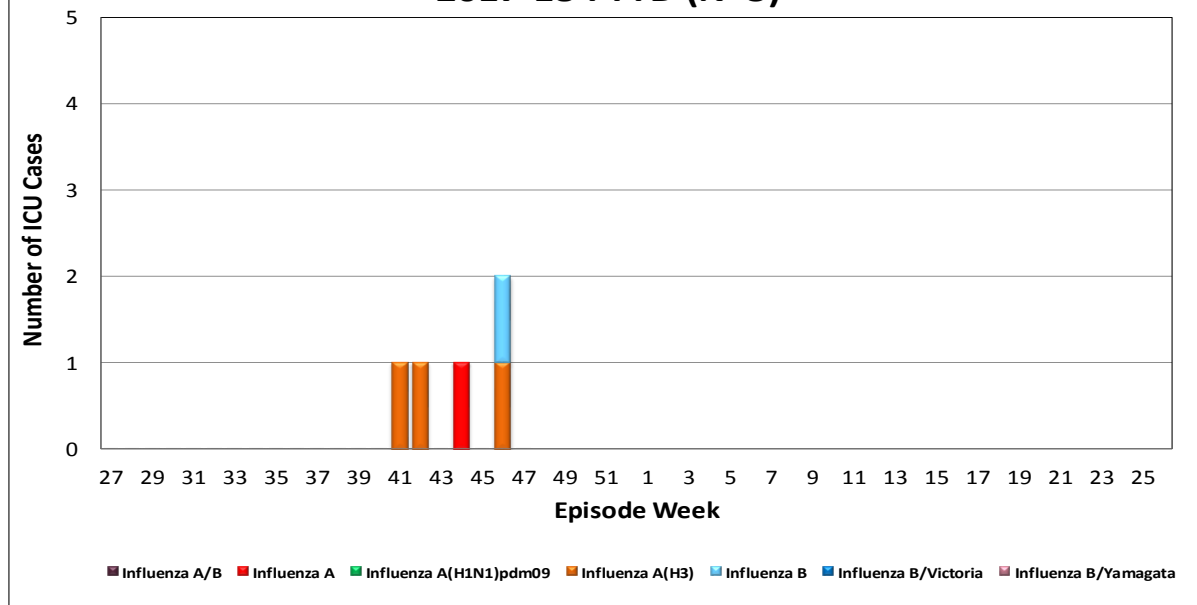


Figure 9. Number of Influenza Cases Requiring ICU Care by Episode Week and Type of Influenza, 2017-18 FYTD (N=5)



Episode week is the week of symptom onset, or earliest available date in which the case is identified.

Influenza Reporting in San Diego County

Local providers are encouraged to report laboratory positive influenza detections to the County Epidemiology Program by **FAX (858) 715-6458**. Please fax a [Case Report](#) Form and/or a printed laboratory result, and indicate if the patient was admitted to ICU or died, and/or is a resident of a congregate living facility.

For questions regarding sending specimens to Public Health Laboratory (PHL), call (619) 692-8500. Click here for the updated PHL [PCR Test Request Form](#). Contact the Epidemiology Program with any questions at **(619) 692-8499** or by email to: EpiDiv.HHSA@sdcounty.ca.gov.

Resources

San Diego County Influenza Surveillance Weekly [Slide Deck](#) - presentation version of this report

County of San Diego Immunization Program www.sdiz.org

California Department of Public Health [Influenza](#)

Centers for Disease Control and Prevention Influenza Surveillance [Weekly Report](#)