

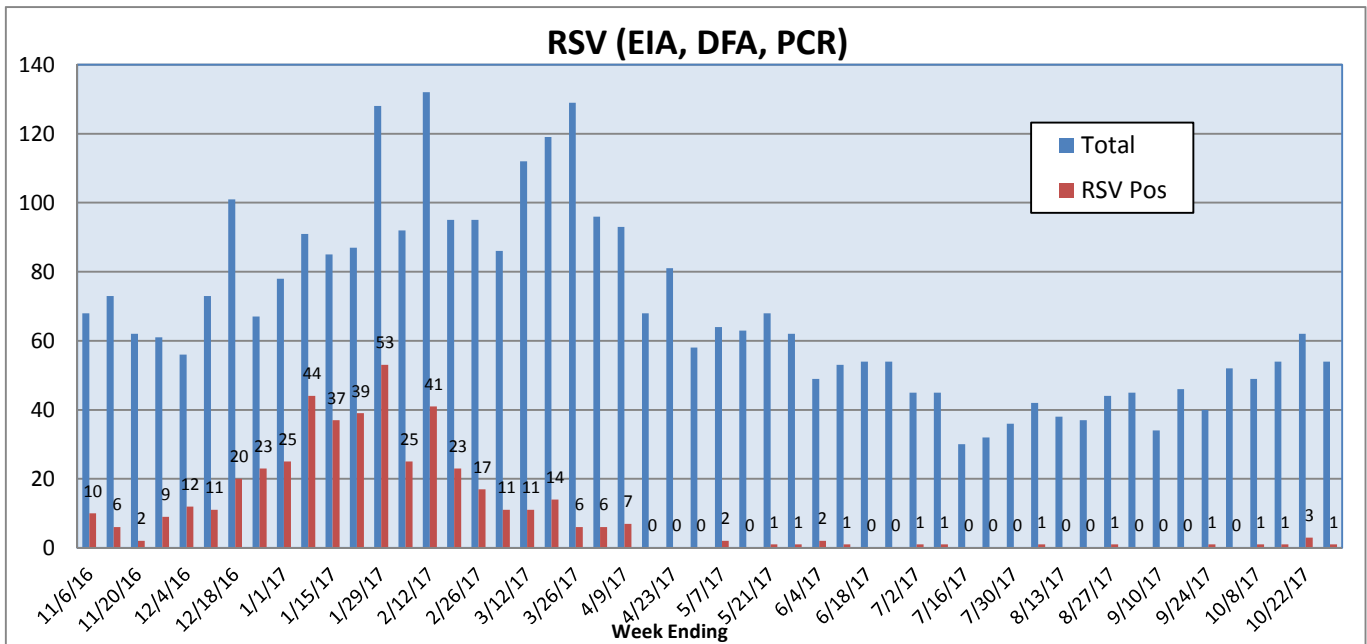
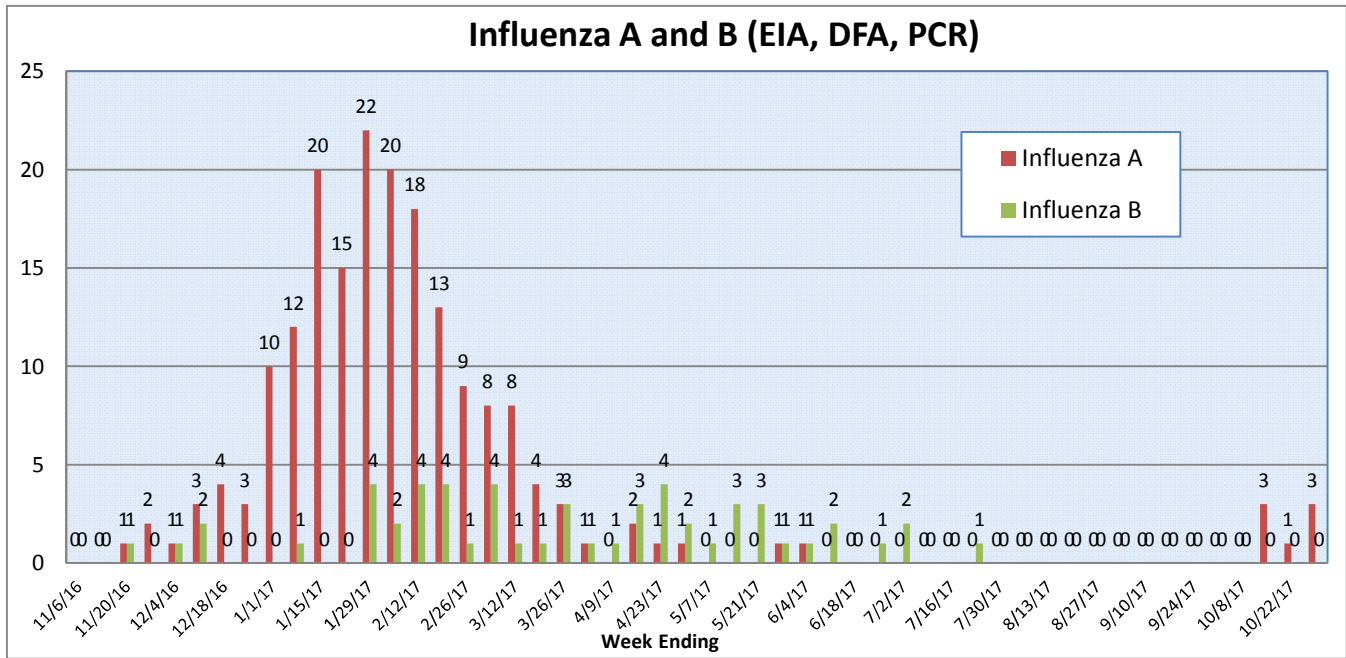
Pathogens Report

The following report is a listing of selected pathogens detected at Rady Children's Hospital Laboratory. The report includes data from adult and pediatric specimens collected locally.

Week of October 23-29, 2017

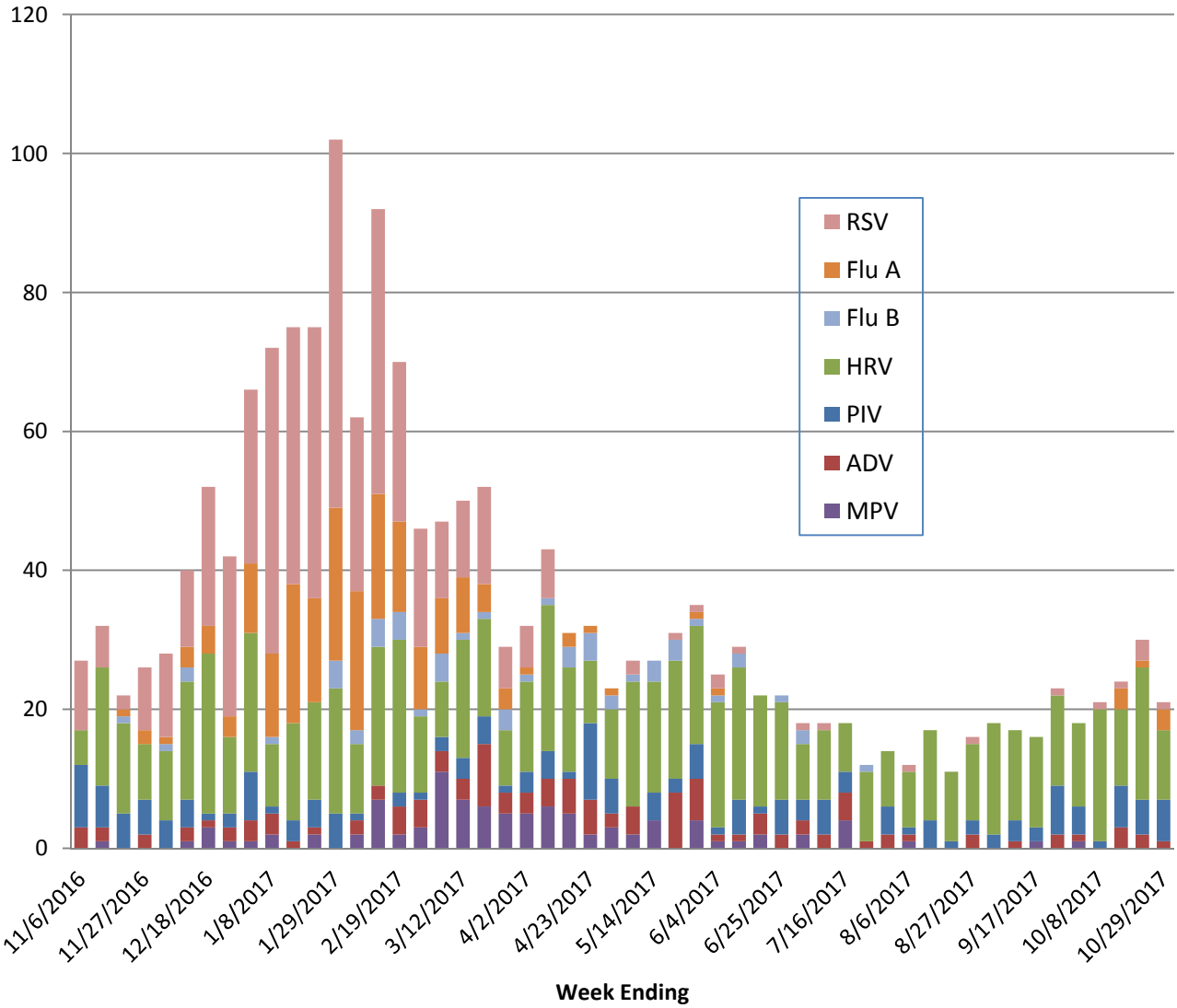
	Positive Tests Current Week	Total Tests Current Week	Positive Tests YTD*	Total Tests YTD*
RSV (DFA and PCR)	1	54	6	219
Influenza A (EIA, DFA, and PCR)	3	65	7	247
Influenza B (EIA, DFA, and PCR)	0	65	0	247
Parainfluenza (PCR and DFA)	6	50	18	198
Adenovirus (PCR and DFA)	1	50	6	198
Rhinovirus (PCR)	10	38	59	166
Metapneumovirus (PCR)	0	38	0	166
B. pertussis/parapertussis (PCR)	2	59	13	271
Enterovirus, CSF (PCR)	2	8	6	31

*From October 2, 2017.

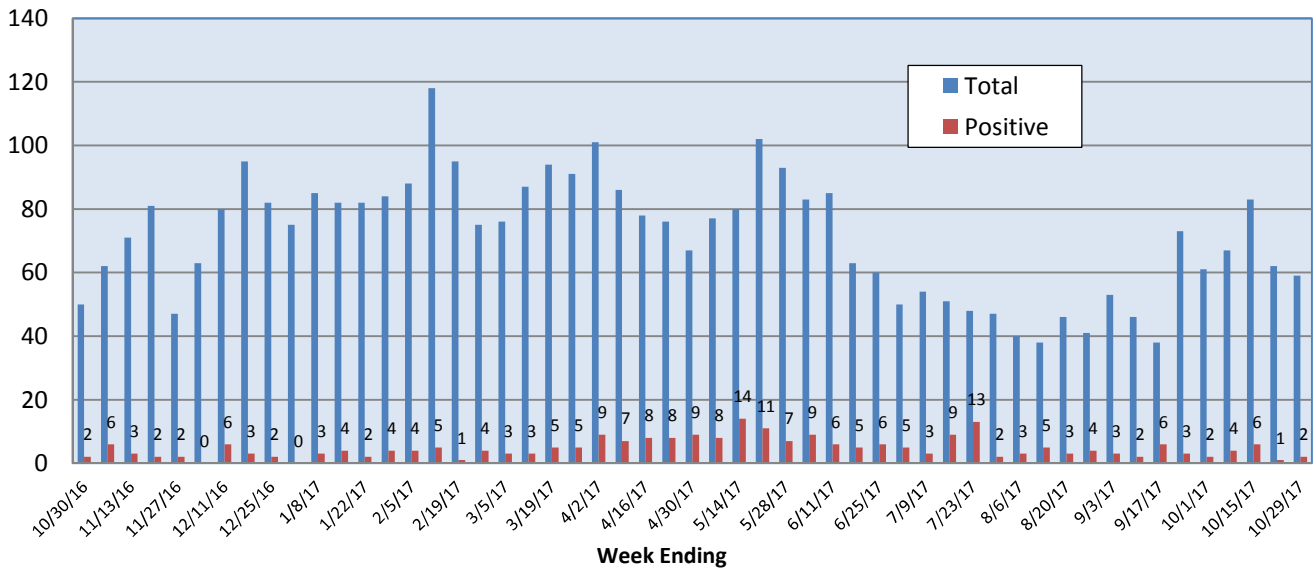


Pathogens Report

Positive Respiratory Viruses by Week



B. pertussis/parapertussis PCR



Pathogens Report

