

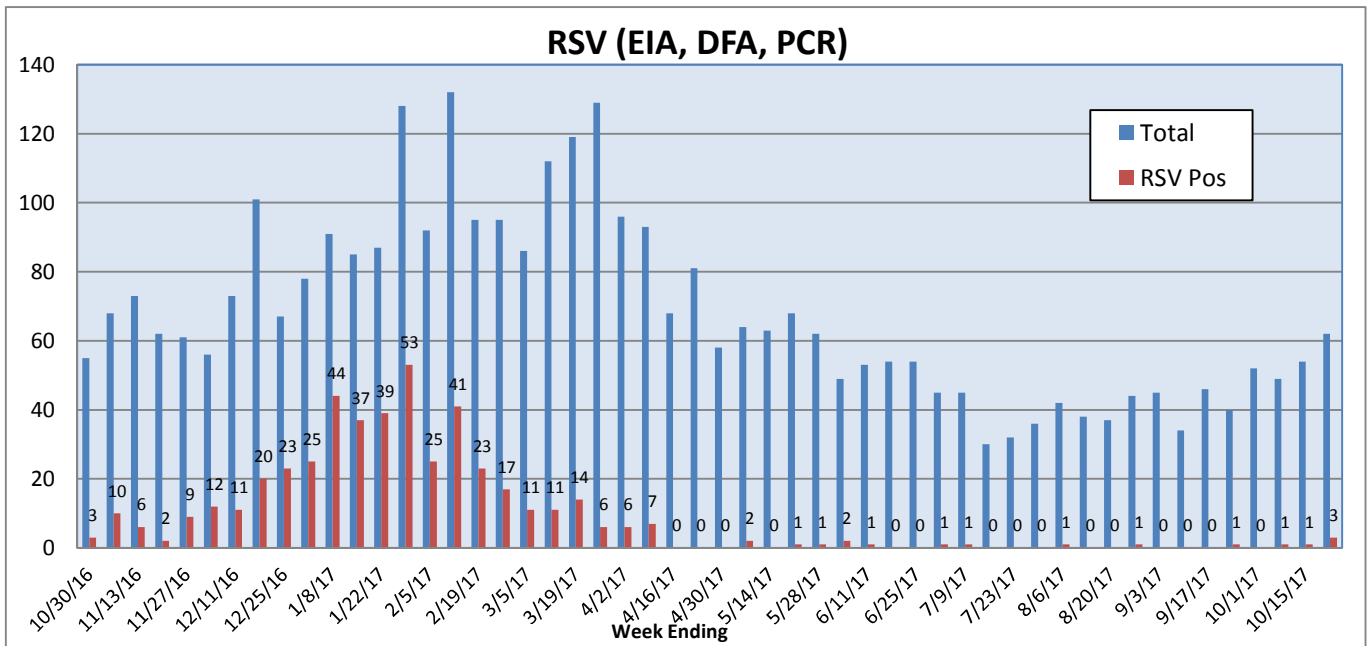
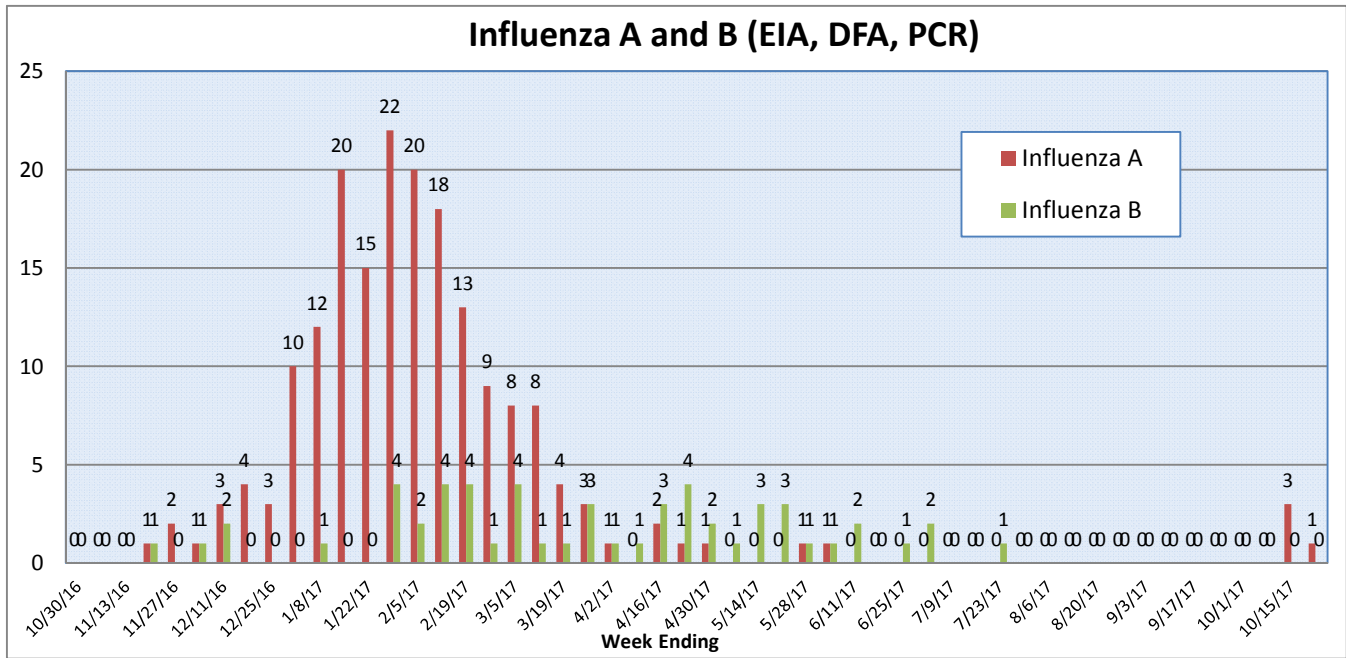
Pathogens Report

The following report is a listing of selected pathogens detected at Rady Children's Hospital Laboratory. The report includes data from adult and pediatric specimens collected locally.

October 16-22, 2017

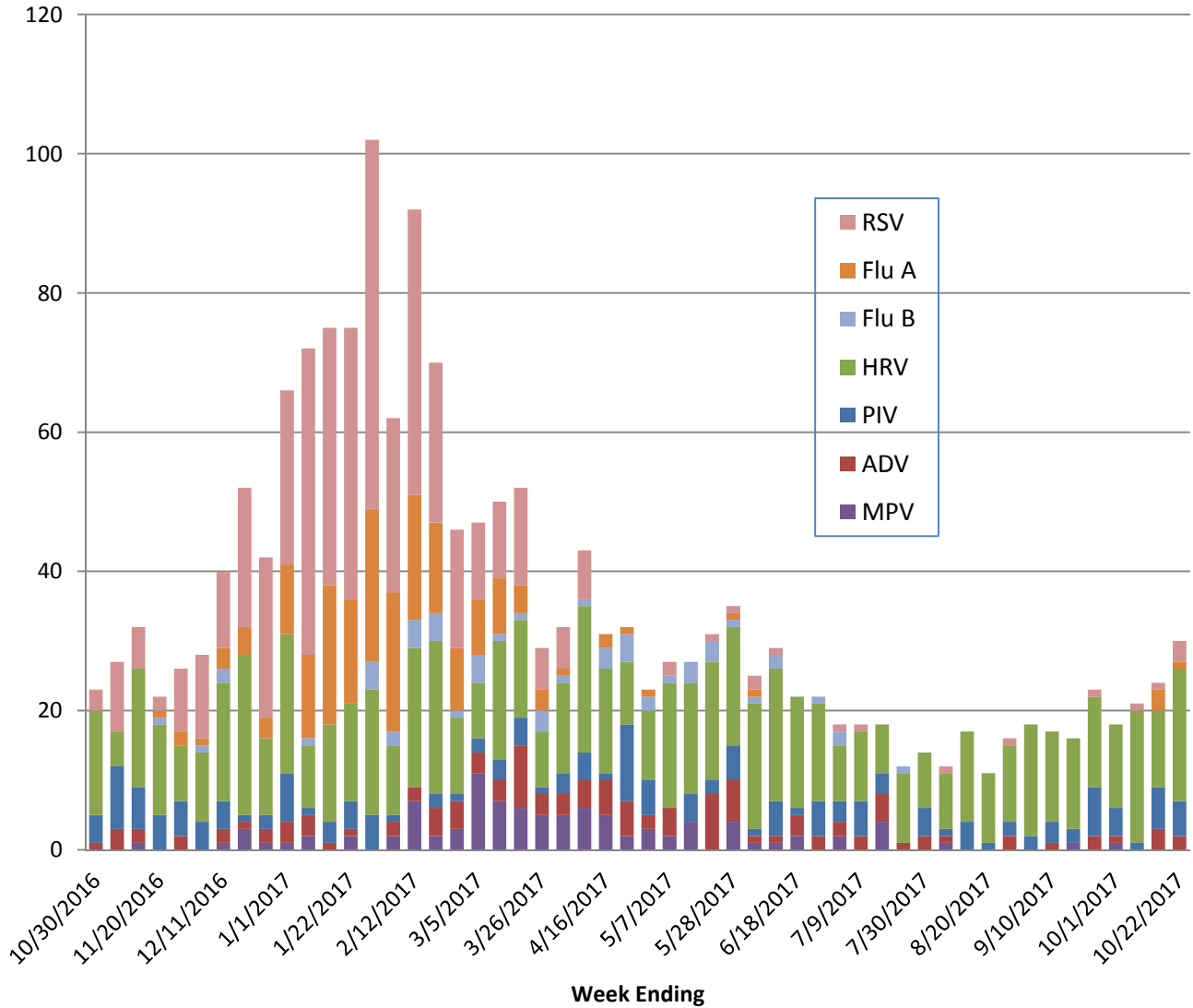
	Positive Tests Current Week	Total Tests Current Week	Positive Tests YTD*	Total Tests YTD*
RSV (DFA and PCR)	3	62	4	165
Influenza A (EIA, DFA, and PCR)	1	68	4	182
Influenza B (EIA, DFA, and PCR)	0	68	0	182
Parainfluenza (PCR and DFA)	5	52	12	148
Adenovirus (PCR and DFA)	2	52	5	148
Rhinovirus (PCR)	19	44	49	128
Metapneumovirus (PCR)	0	44	0	128
B. pertussis/parapertussis (PCR)	1	62	11	212
Enterovirus, CSF (PCR)	1	7	4	23

*From October 2, 2017.

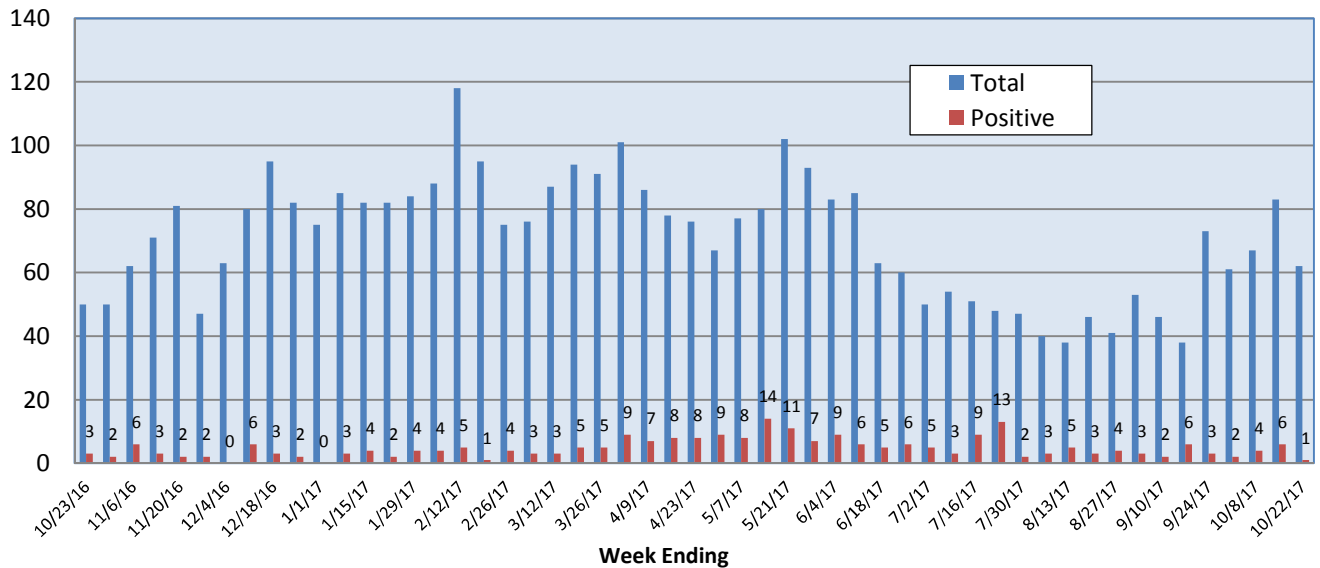


Pathogens Report

Positive Respiratory Viruses by Week



B. pertussis/parapertussis PCR



Pathogens Report

