

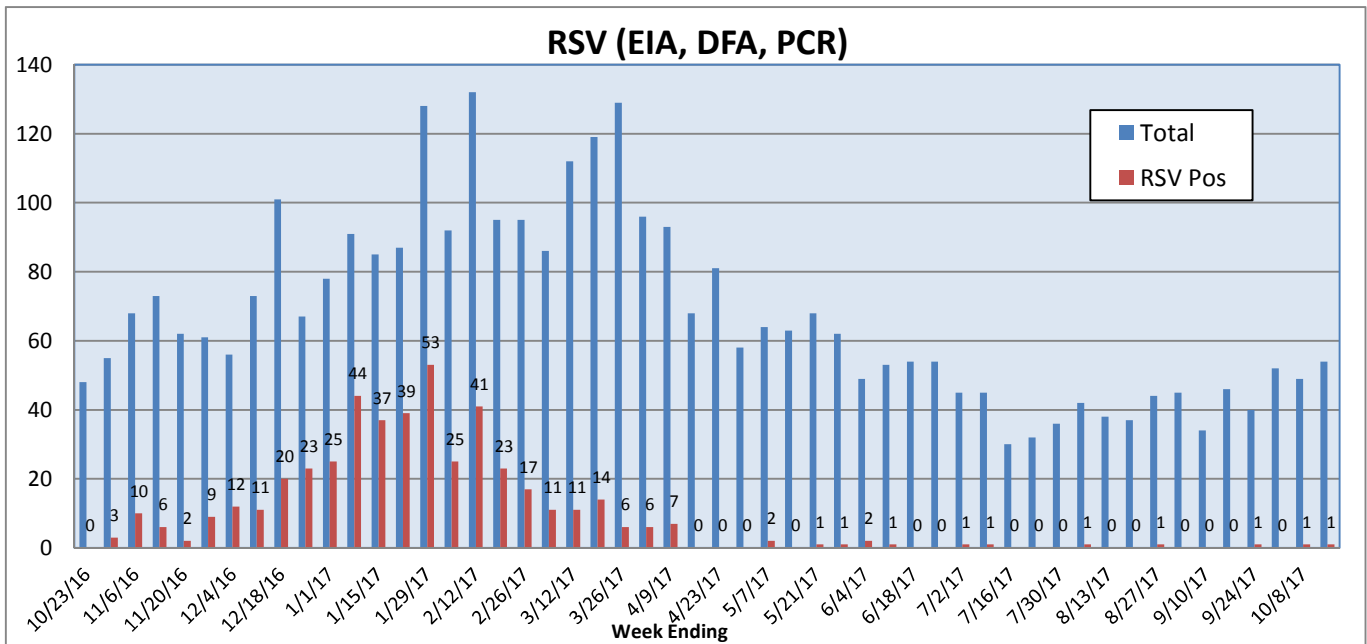
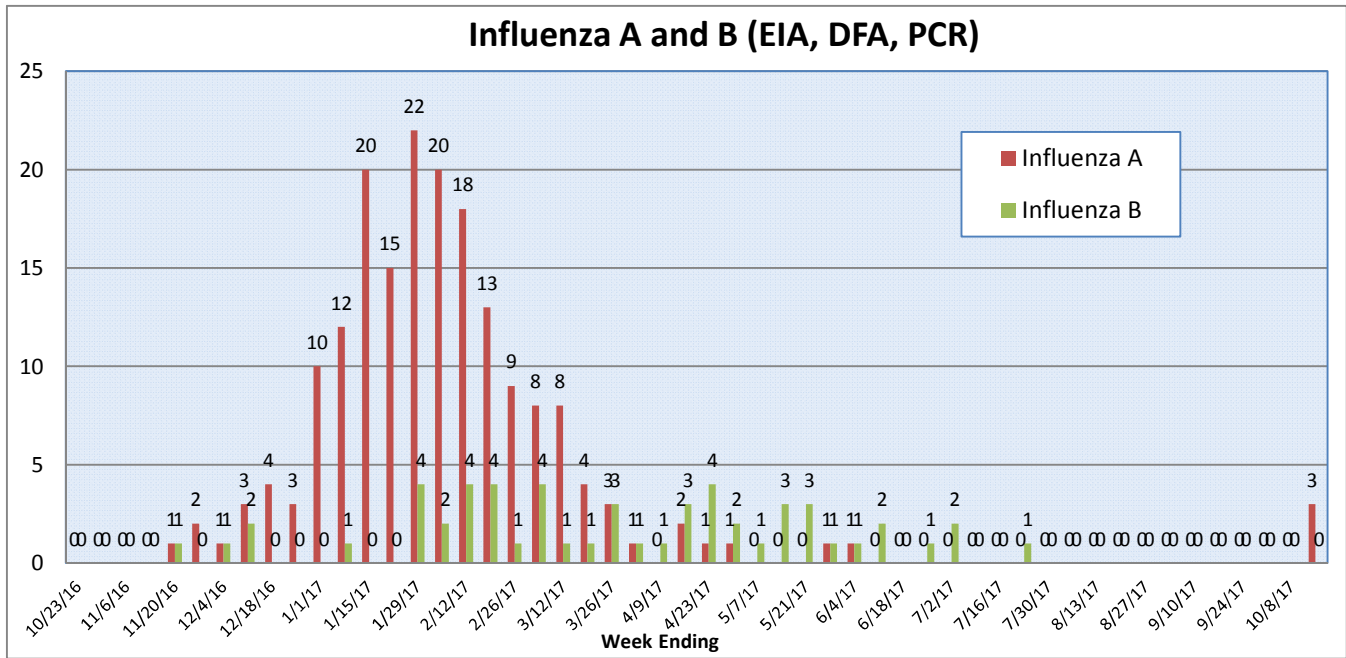
Pathogens Report

The following report is a listing of selected pathogens detected at Rady Children's Hospital Laboratory. The report includes data from adult and pediatric specimens collected locally.

October 9-15, 2017

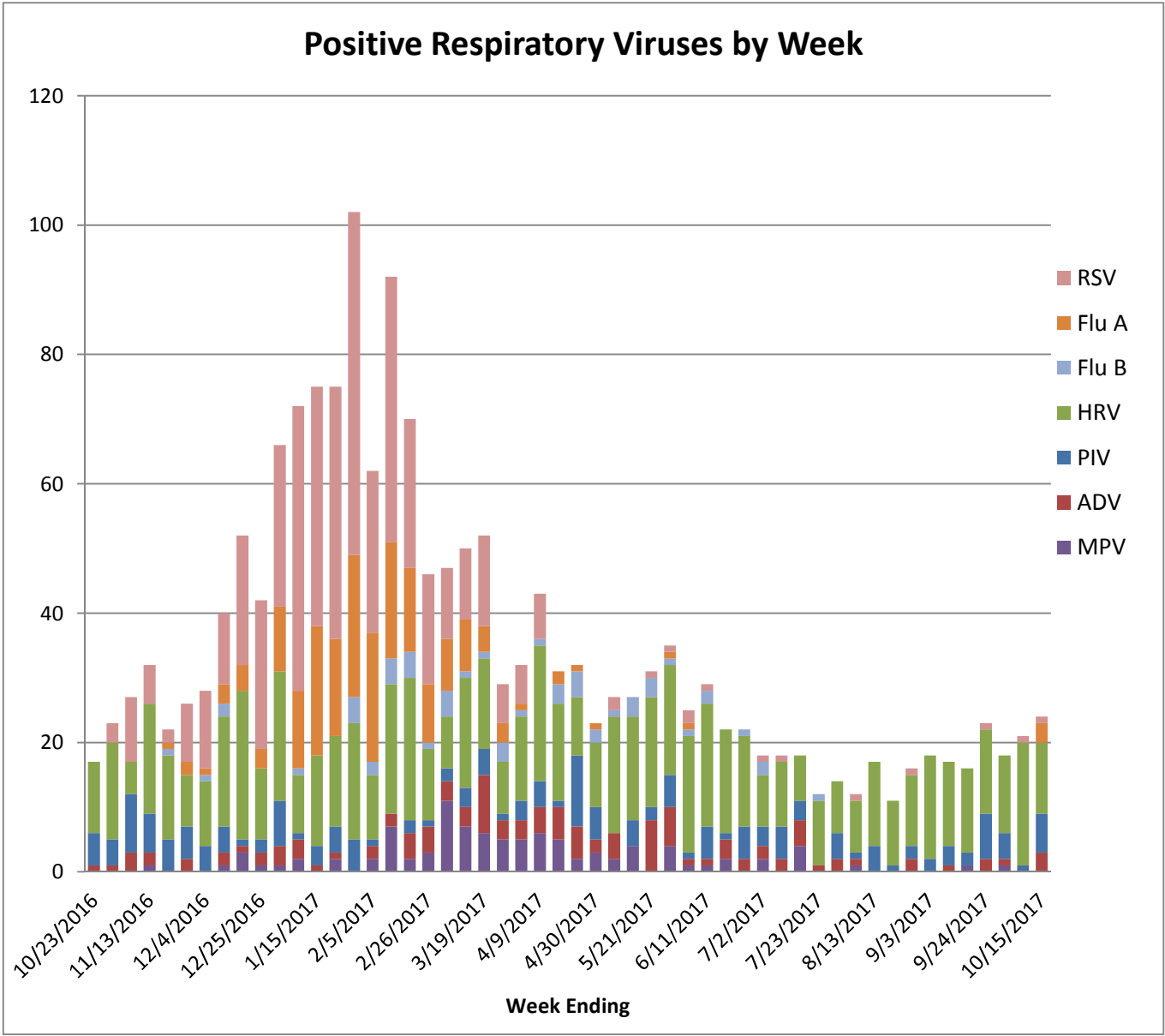
	Positive Tests Current Week	Total Tests Current Week	Positive Tests YTD*	Total Tests YTD*
RSV (DFA and PCR)	1	54	1	103
Influenza A (EIA, DFA, and PCR)	3	60	3	114
Influenza B (EIA, DFA, and PCR)	0	60	0	114
Parainfluenza (PCR and DFA)	6	49	6	96
Adenovirus (PCR and DFA)	3	49	3	96
Rhinovirus (PCR)	11	43	11	84
Metapneumovirus (PCR)	0	43	0	84
B. pertussis/parapertussis (PCR)	6	83	10	150
Enterovirus, CSF (PCR)	0	5	3	16

*From October 2, 2017.

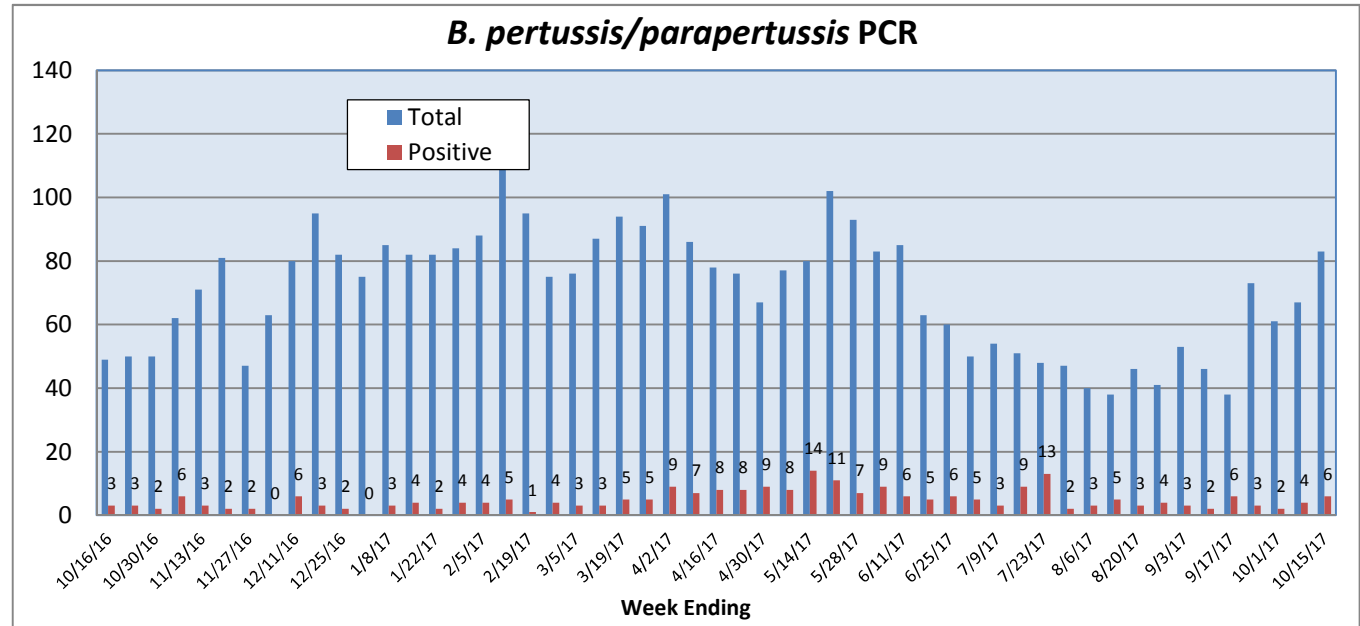


Pathogens Report

Positive Respiratory Viruses by Week



B. pertussis/parapertussis PCR



Pathogens Report

