

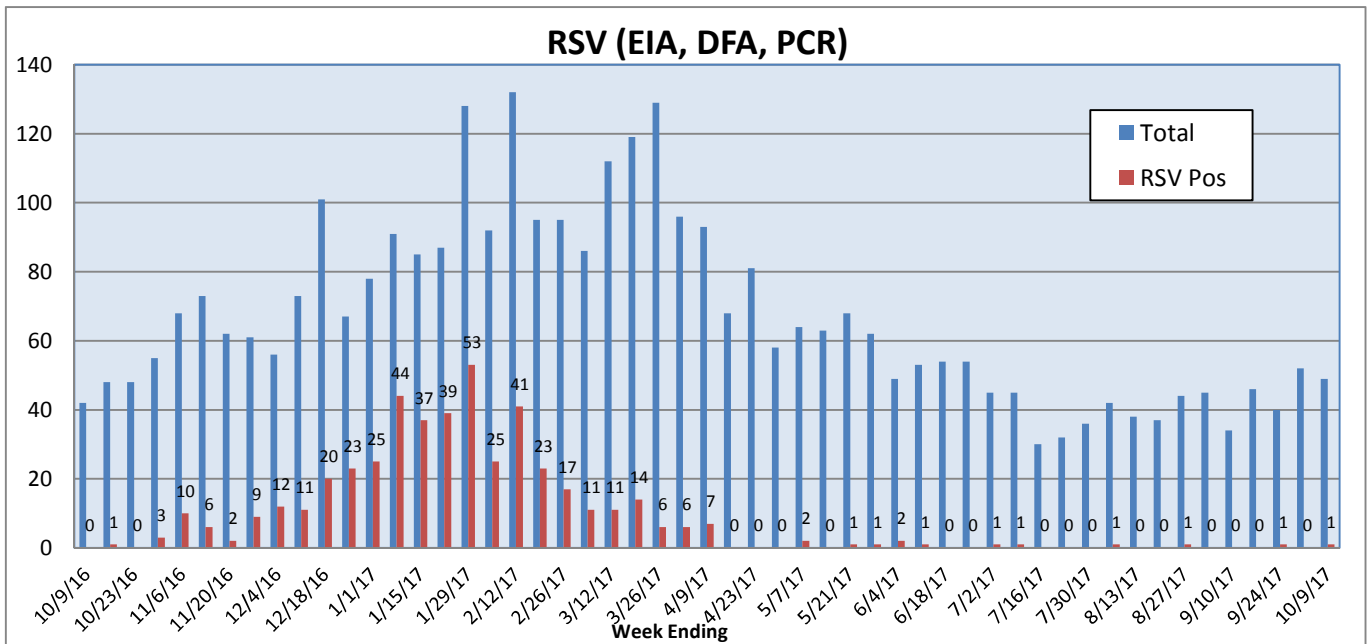
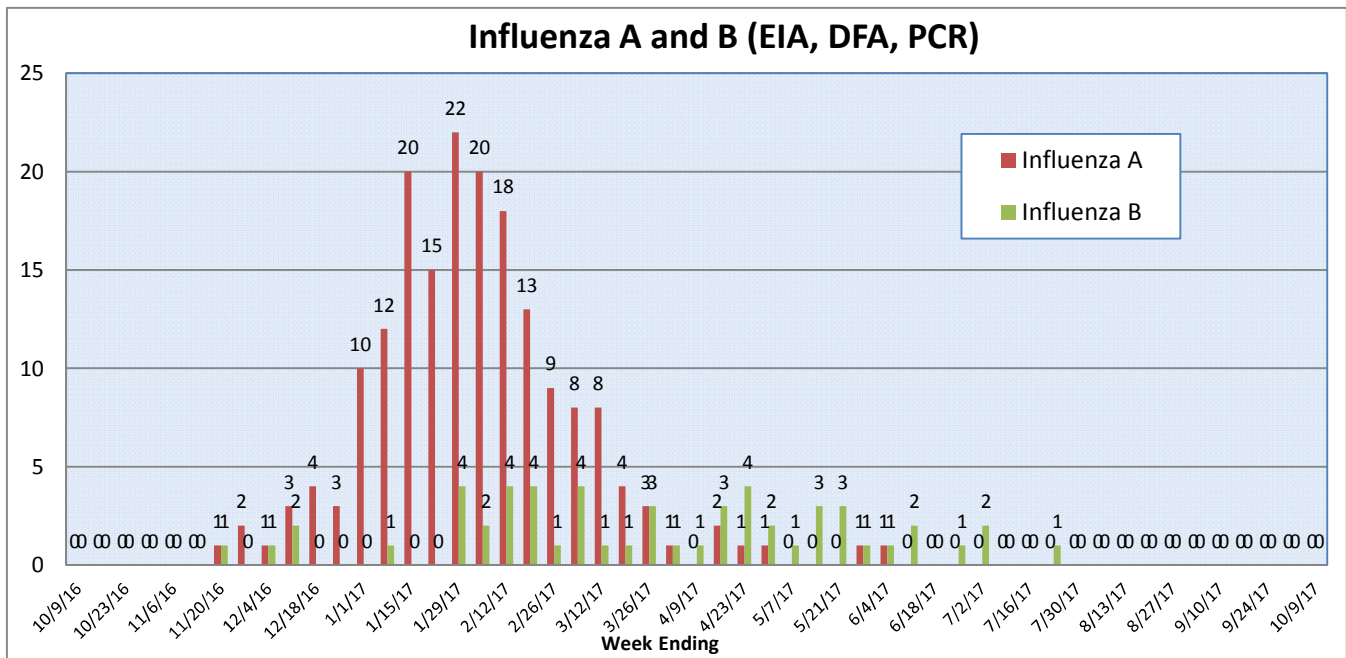
Pathogens Report

The following report is a listing of selected pathogens detected at Rady Children's Hospital Laboratory. The report includes data from adult and pediatric specimens collected locally.

October 2-8, 2017

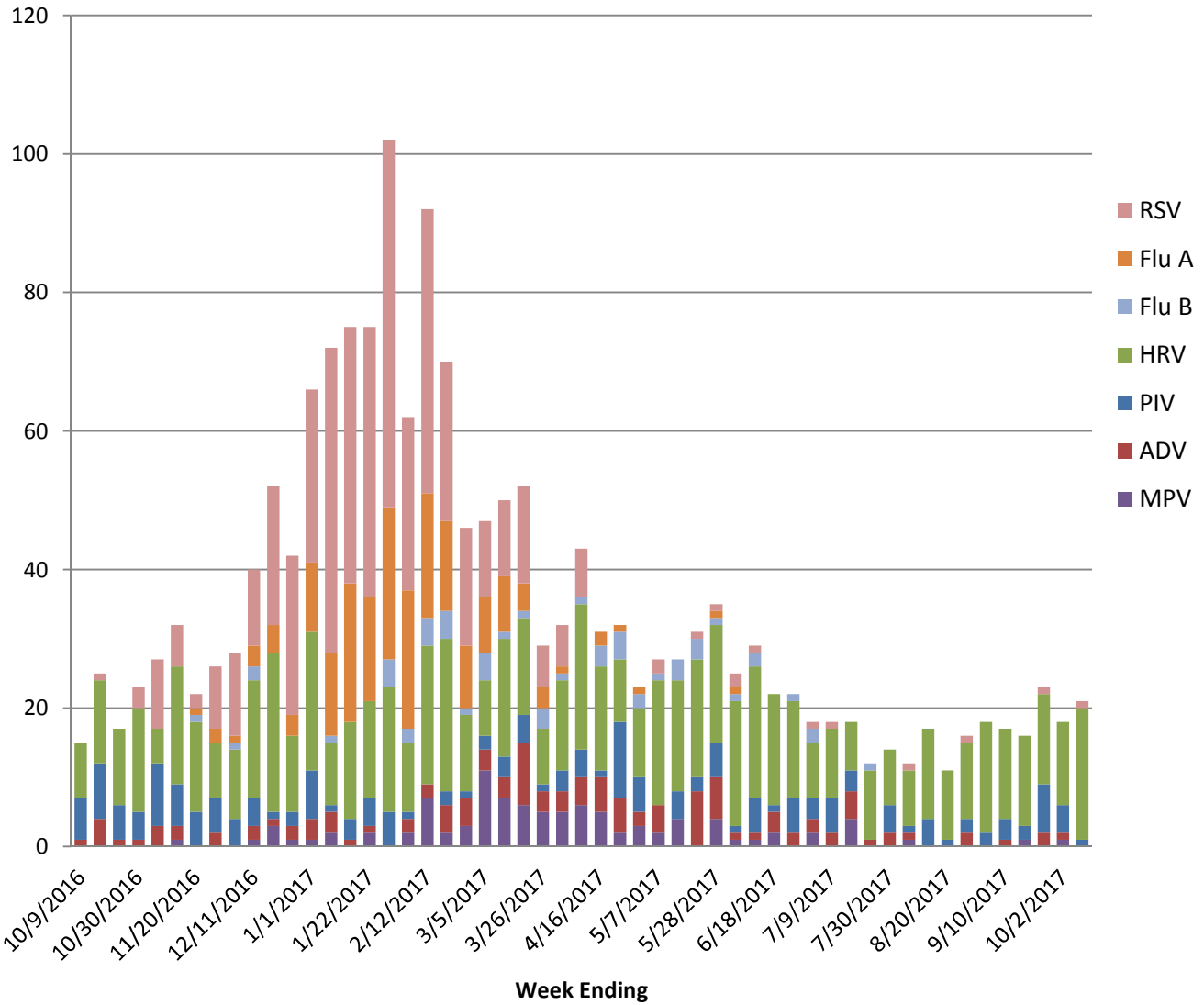
	Positive Tests Current Week	Total Tests Current Week	Positive Tests YTD*	Total Tests YTD*
RSV (DFA and PCR)	1	49	469	3561
Influenza A (EIA, DFA, and PCR)	0	54	183	4954
Influenza B (EIA, DFA, and PCR)	0	54	55	1954
Parainfluenza (PCR and DFA)	1	47	182	3334
Adenovirus (PCR and DFA)	0	47	119	3334
Rhinovirus (PCR)	19	41	709	2620
Metapneumovirus (PCR)	0	41	98	2620
B. pertussis/parapertussis (PCR)	4	67	252	3705
Enterovirus, CSF (PCR)	3	11	49	526

*From October 3, 2016.

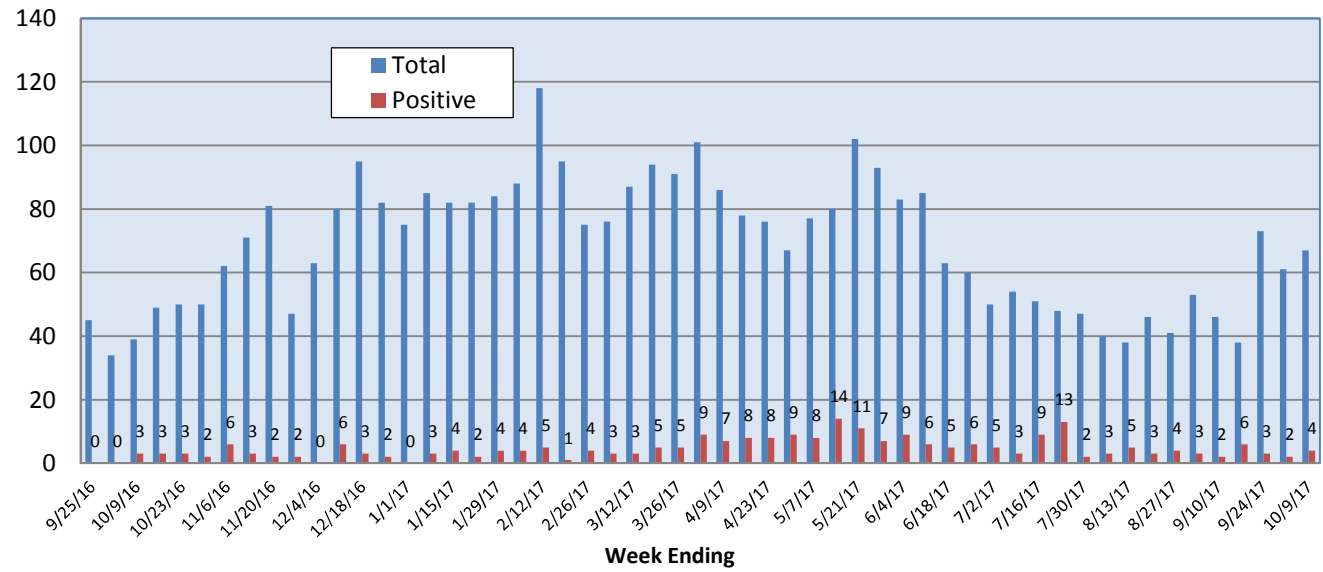


Pathogens Report

Positive Respiratory Viruses by Week



B. pertussis/parapertussis PCR



Pathogens Report

