

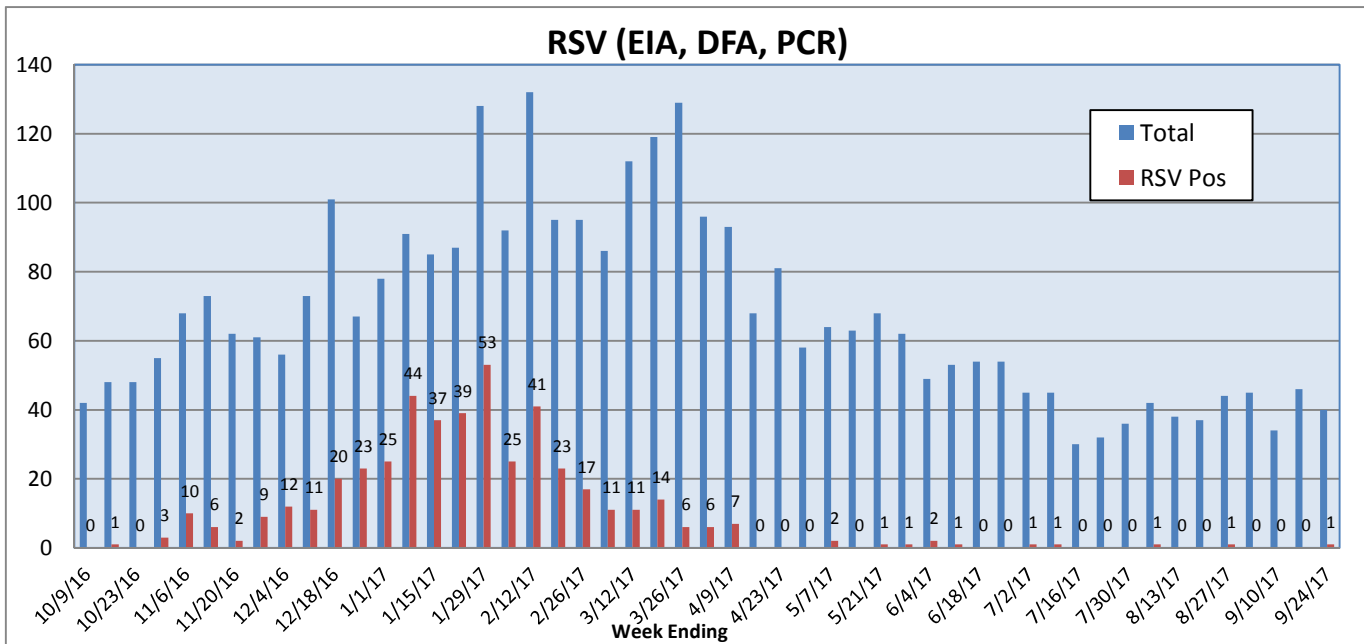
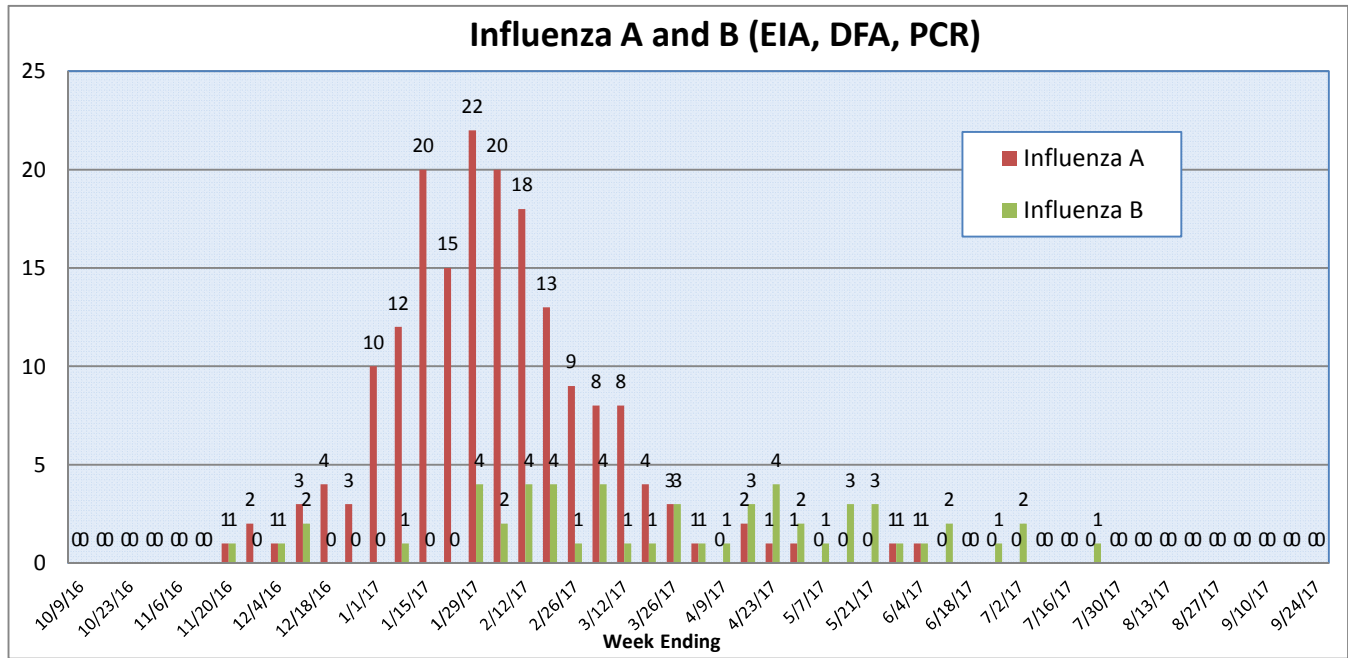
Pathogens Report

The following report is a listing of selected pathogens detected at Rady Children's Hospital Laboratory. The report includes data from adult and pediatric specimens collected locally.

September 18-24, 2017

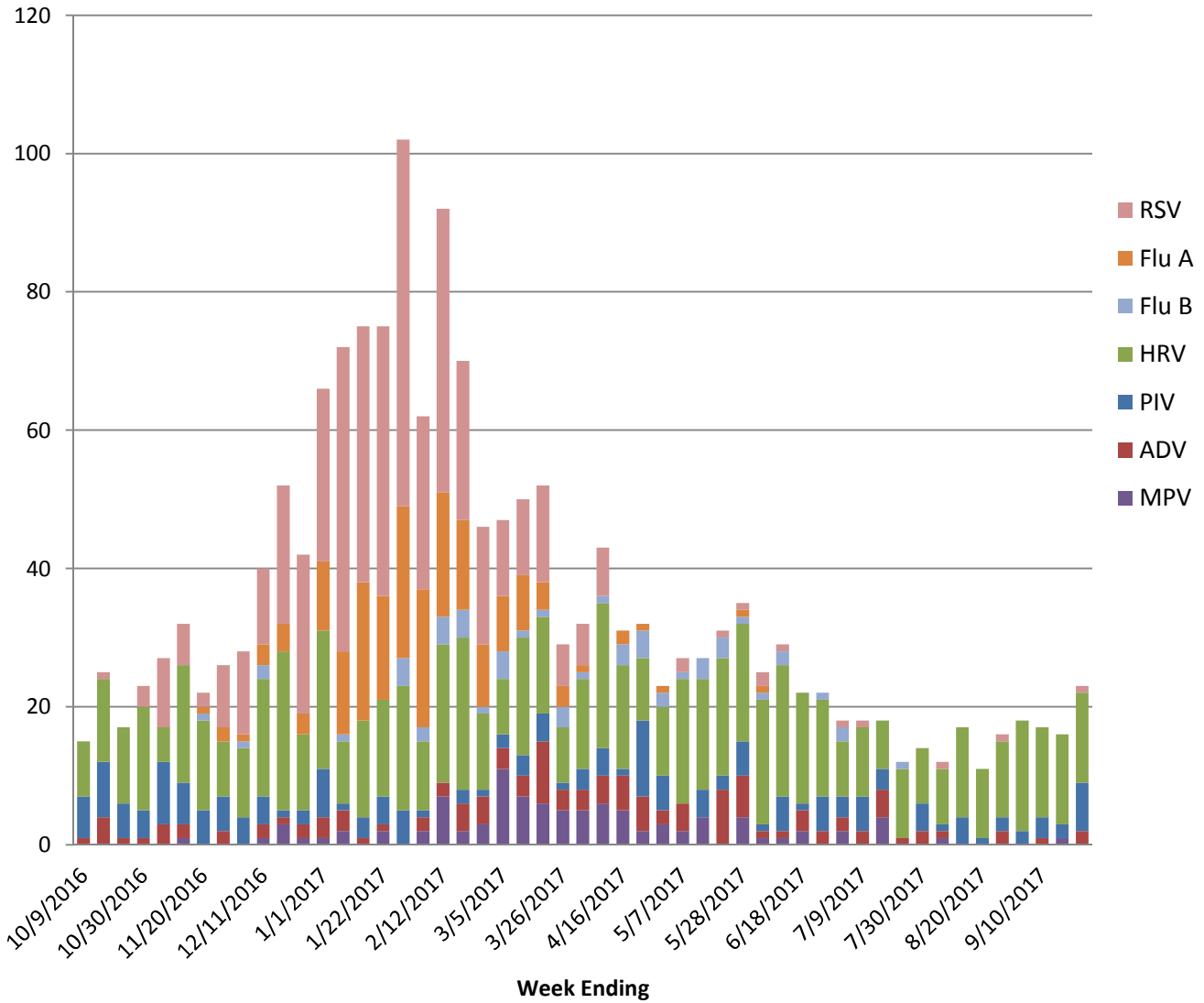
	Positive Tests Current Week	Total Tests Current Week	Positive Tests YTD*	Total Tests YTD*
RSV (DFA and PCR)	1	40	468	3460
Influenza A (EIA, DFA, and PCR)	0	44	183	4840
Influenza B (EIA, DFA, and PCR)	0	44	55	4840
Parainfluenza (PCR and DFA)	7	38	177	3238
Adenovirus (PCR and DFA)	2	38	118	3238
Rhinovirus (PCR)	13	34	678	2538
Metapneumovirus (PCR)	0	34	97	2538
B. pertussis/parapertussis (PCR)	3	73	246	3577
Enterovirus, CSF (PCR)	1	10	43	501

*From October 3, 2016.

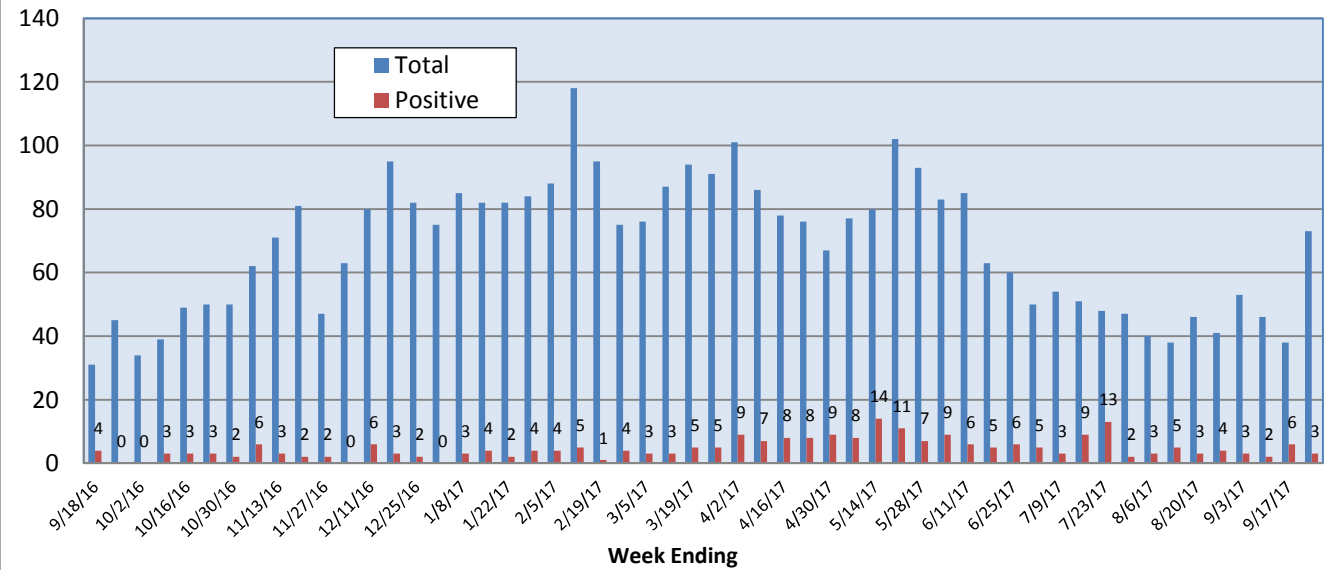


Pathogens Report

Positive Respiratory Viruses by Week



B. pertussis/parapertussis PCR



Pathogens Report

