

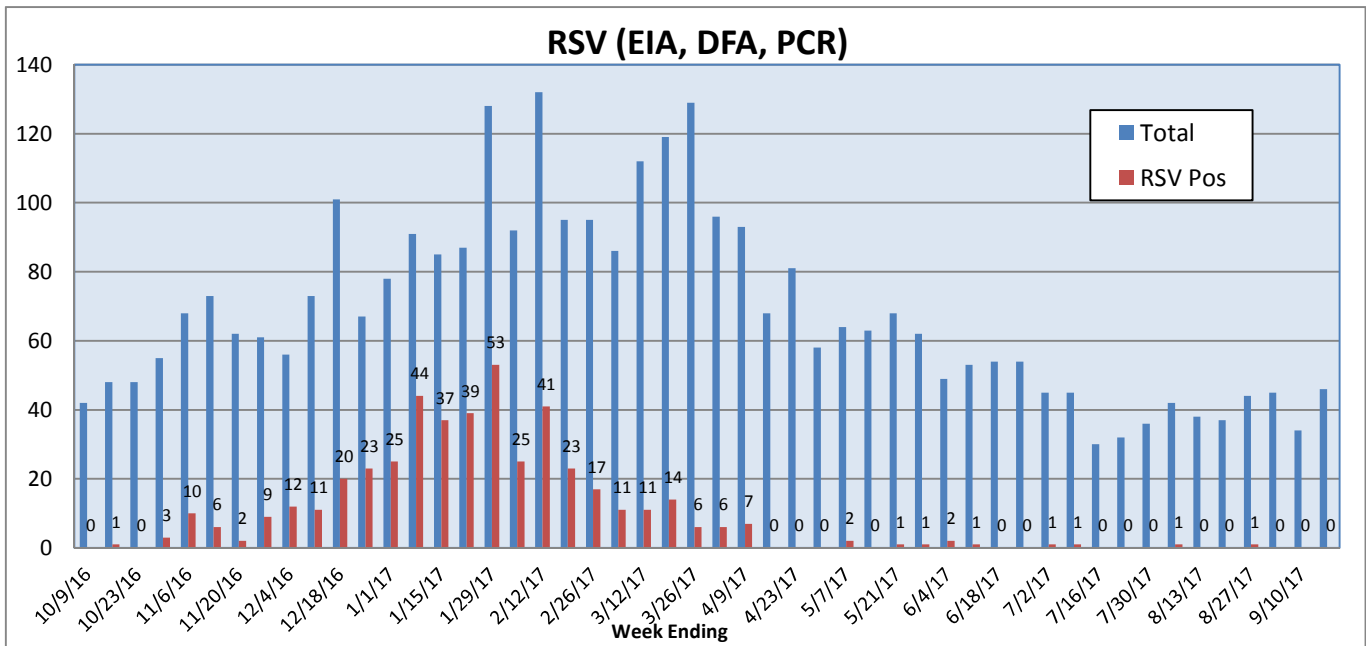
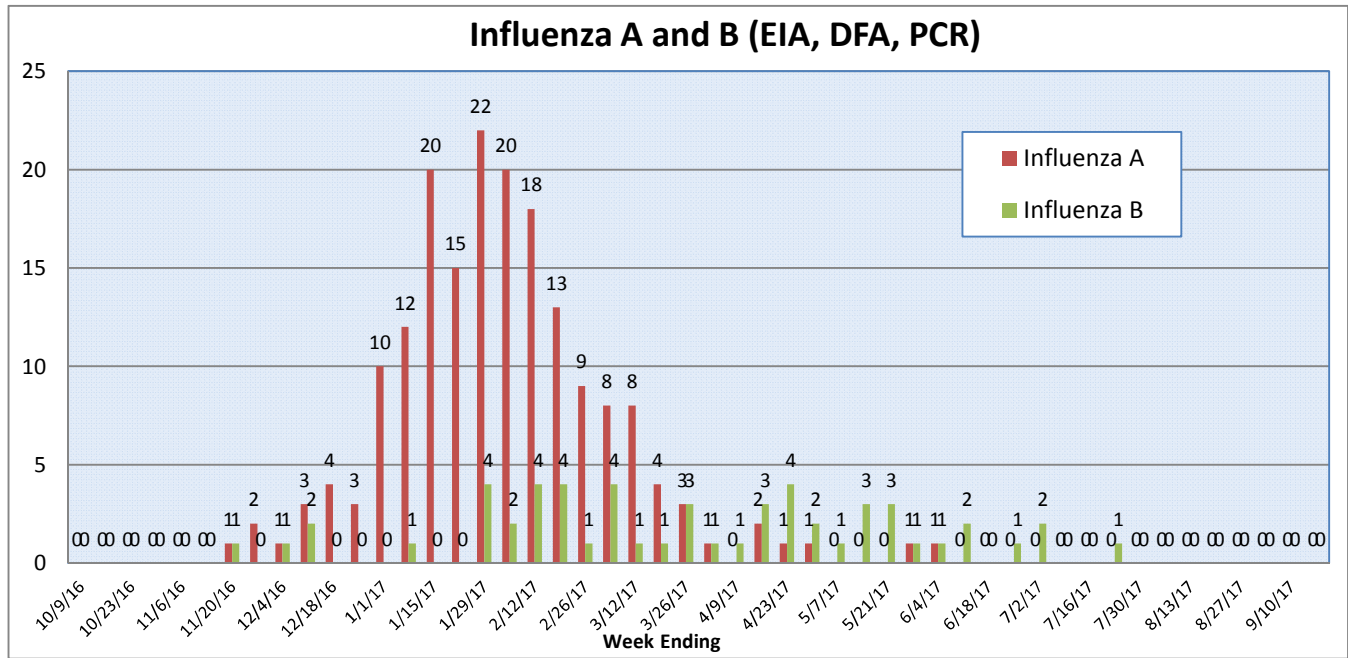
Pathogens Report

The following report is a listing of selected pathogens detected at Rady Children's Hospital Laboratory. The report includes data from adult and pediatric specimens collected locally.

September 11-17, 2017

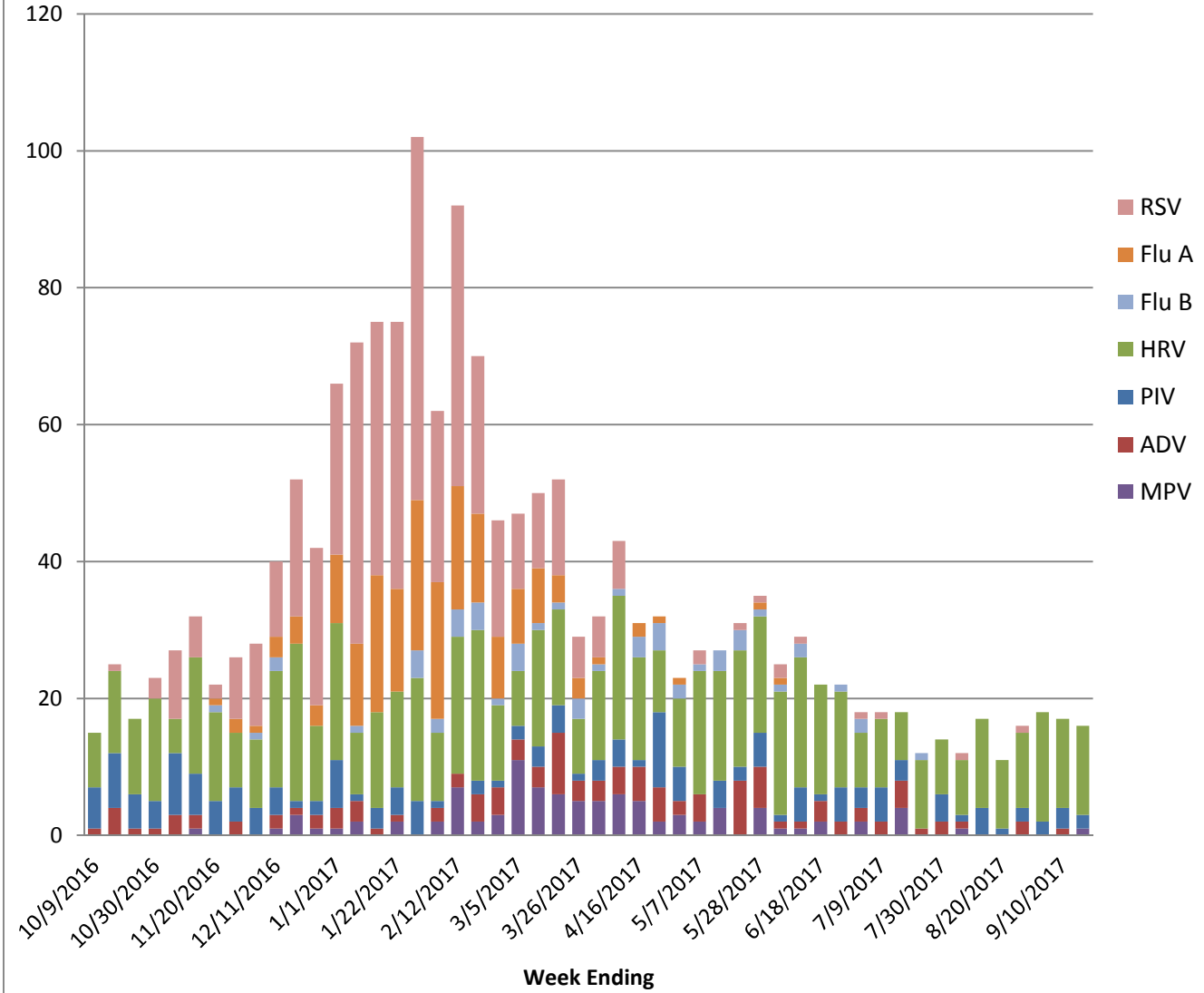
	Positive Tests Current Week	Total Tests Current Week	Positive Tests YTD*	Total Tests YTD*
RSV (DFA and PCR)	0	46	467	3420
Influenza A (EIA, DFA, and PCR)	0	48	183	4796
Influenza B (EIA, DFA, and PCR)	0	48	55	4796
Parainfluenza (PCR and DFA)	2	44	170	3200
Adenovirus (PCR and DFA)	0	44	116	3200
Rhinovirus (PCR)	13	38	170	2504
Metapneumovirus (PCR)	1	38	97	2504
B. pertussis/parapertussis (PCR)	8	57	243	3504
Enterovirus, CSF (PCR)	1	8	42	491

*From October 3, 2016.

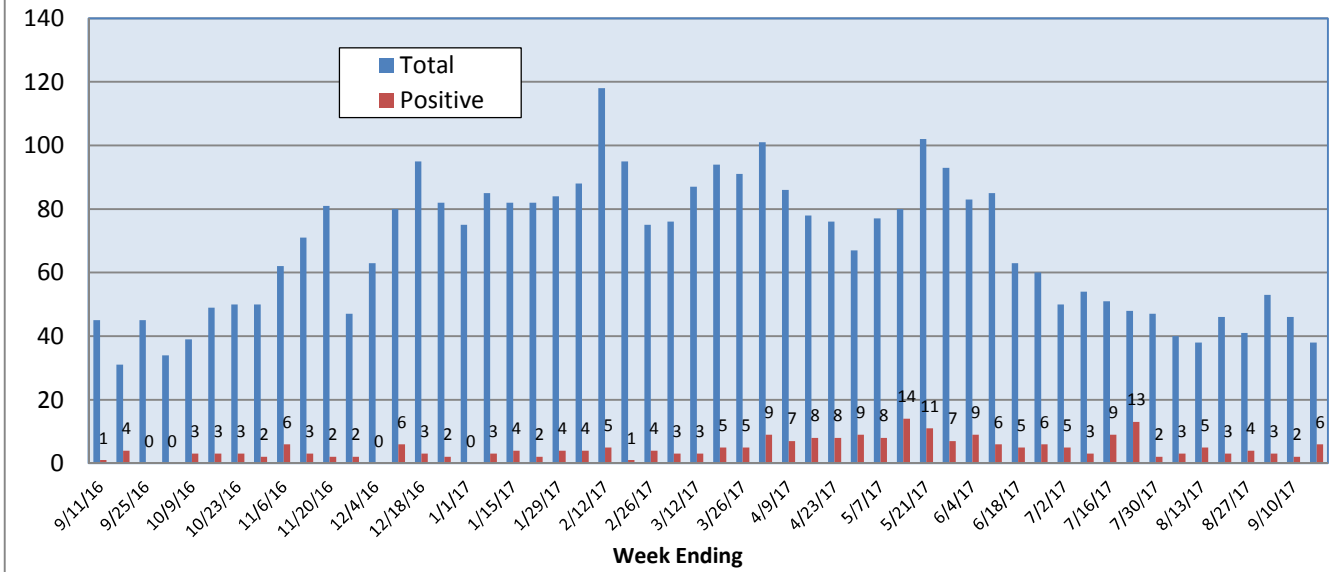


Pathogens Report

Positive Respiratory Viruses by Week



B. pertussis/parapertussis PCR



Pathogens Report

