

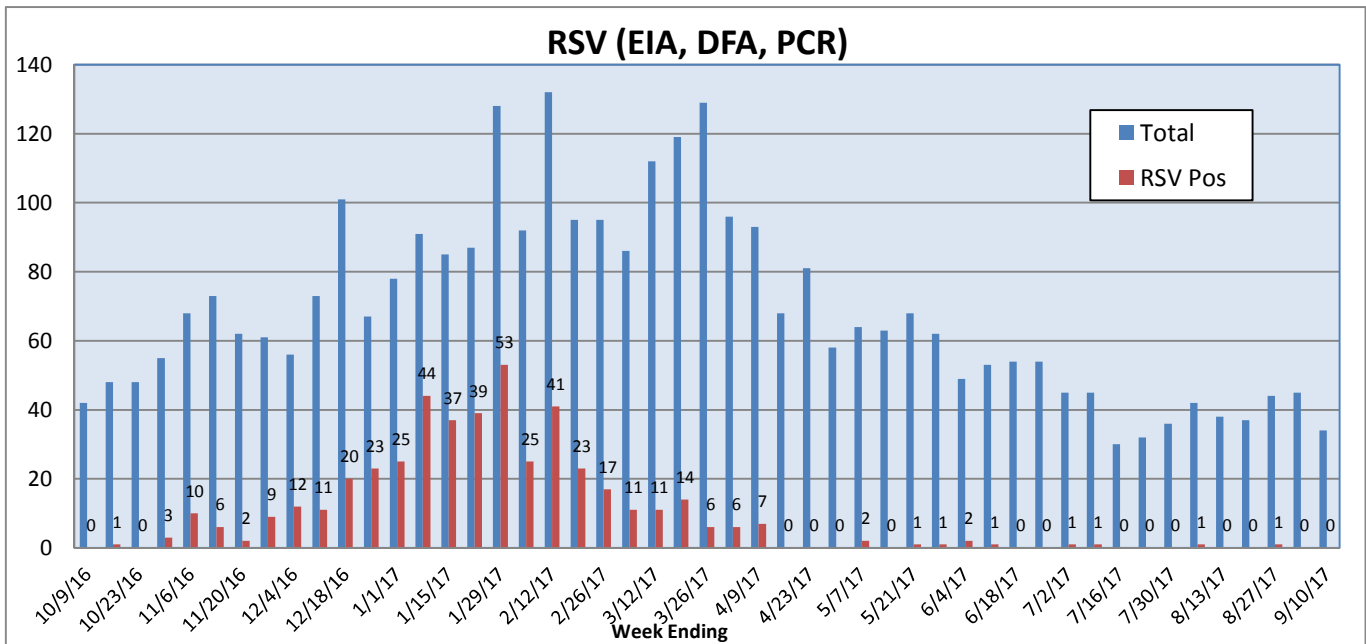
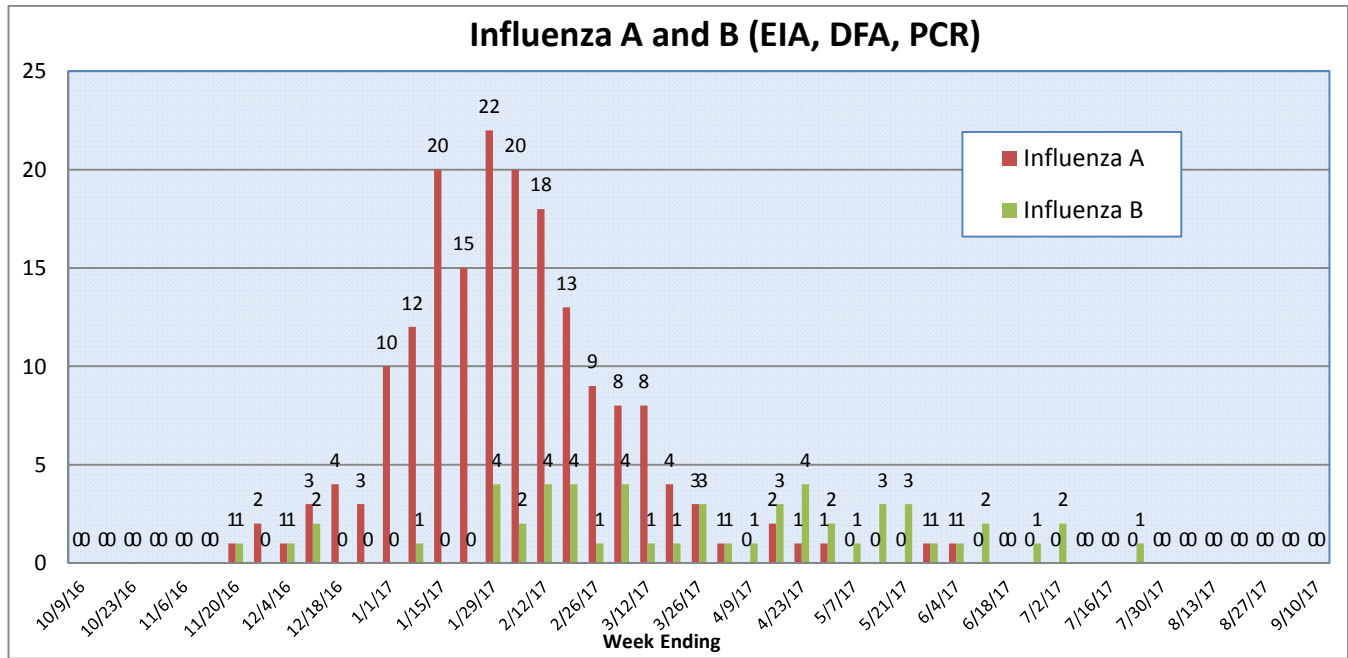
Pathogens Report

The following report is a listing of selected pathogens detected at Rady Children's Hospital Laboratory. The report includes data from adult and pediatric specimens collected locally.

September 4-10, 2017

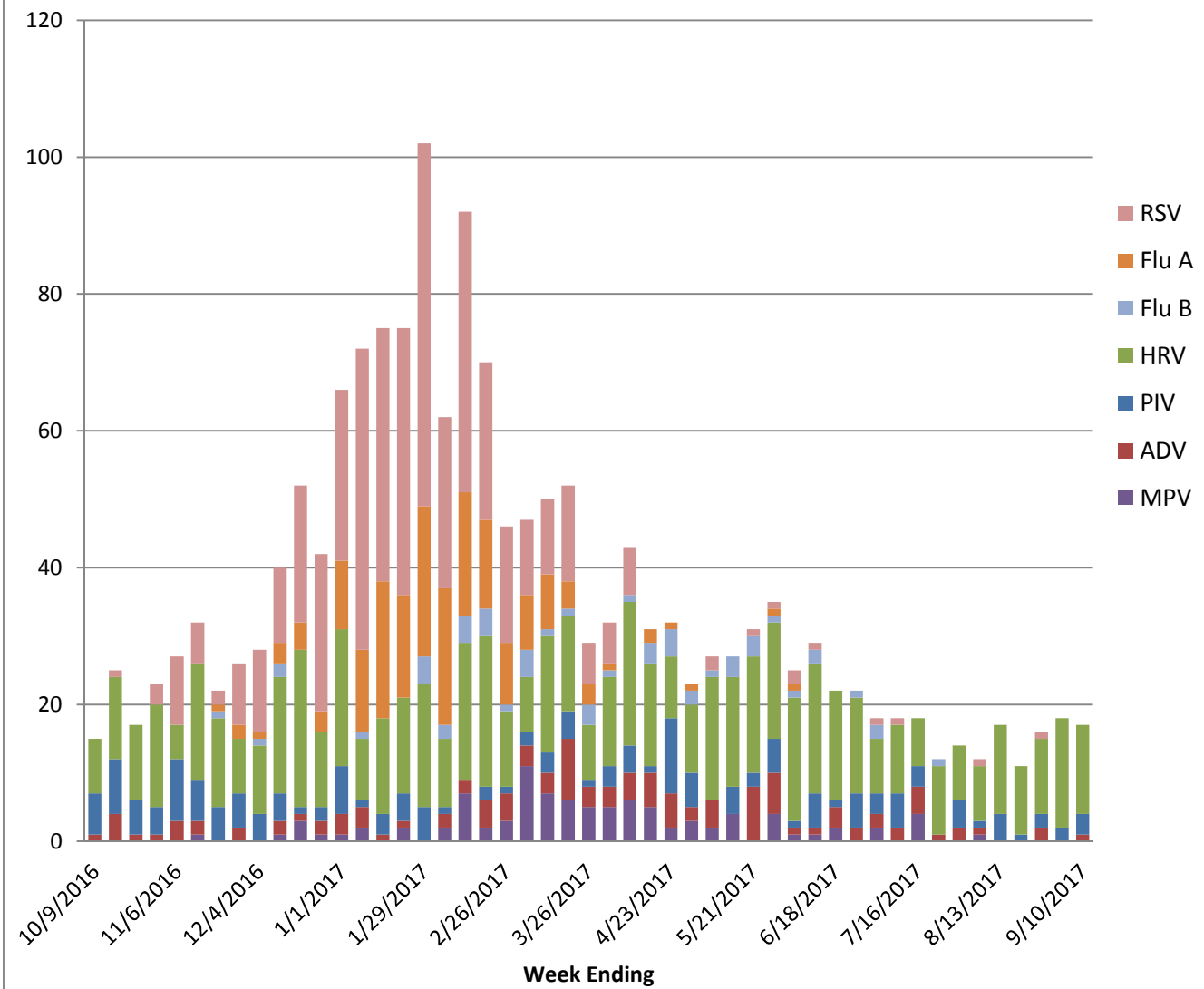
	Positive Tests Current Week	Total Tests Current Week	Positive Tests YTD*	Total Tests YTD*
RSV (DFA and PCR)	0	34	467	3374
Influenza A (EIA, DFA, and PCR)	0	34	183	4748
Influenza B (EIA, DFA, and PCR)	0	34	55	4748
Parainfluenza (PCR and DFA)	3	34	168	3156
Adenovirus (PCR and DFA)	1	34	116	3156
Rhinovirus (PCR)	13	31	652	2466
Metapneumovirus (PCR)	0	31	96	2466
B. pertussis/parapertussis (PCR)	2	46	237	3466
Enterovirus, CSF (PCR)	3	9	41	483

*From October 3, 2016.

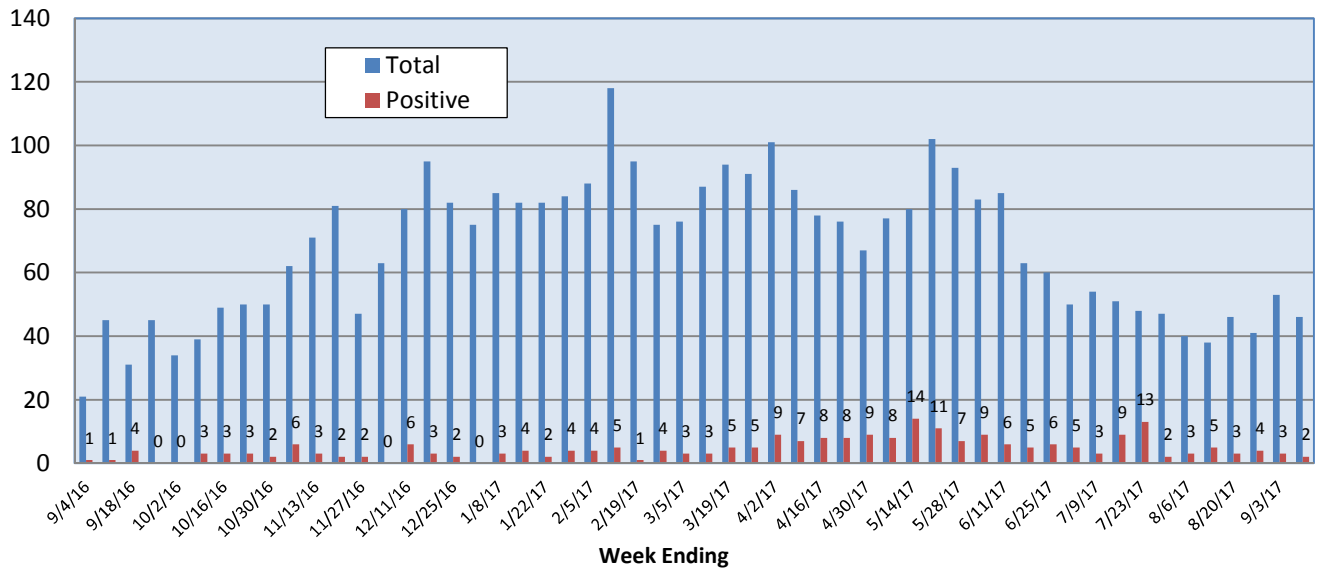


Pathogens Report

Positive Respiratory Viruses by Week



B. pertussis/parapertussis PCR



Pathogens Report

