

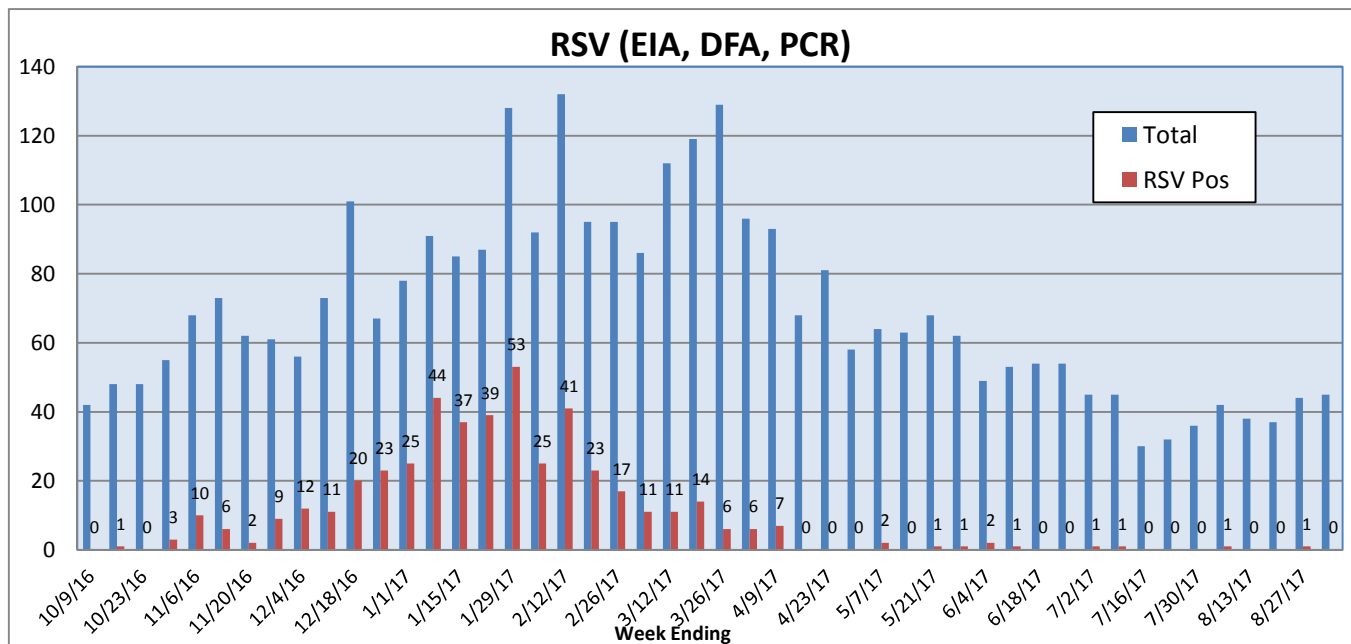
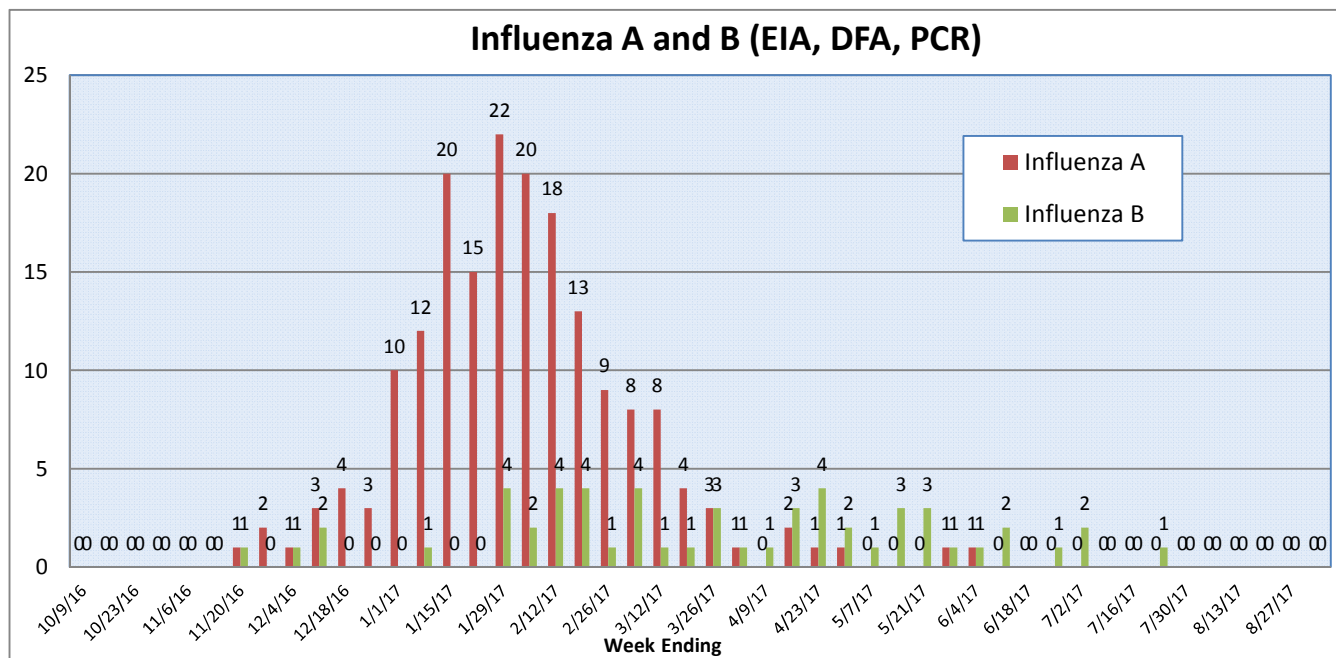
## Pathogens Report

The following report is a listing of selected pathogens detected at Rady Children's Hospital Laboratory. The report includes data from adult and pediatric specimens collected locally.

**August 28 - September 3, 2017**

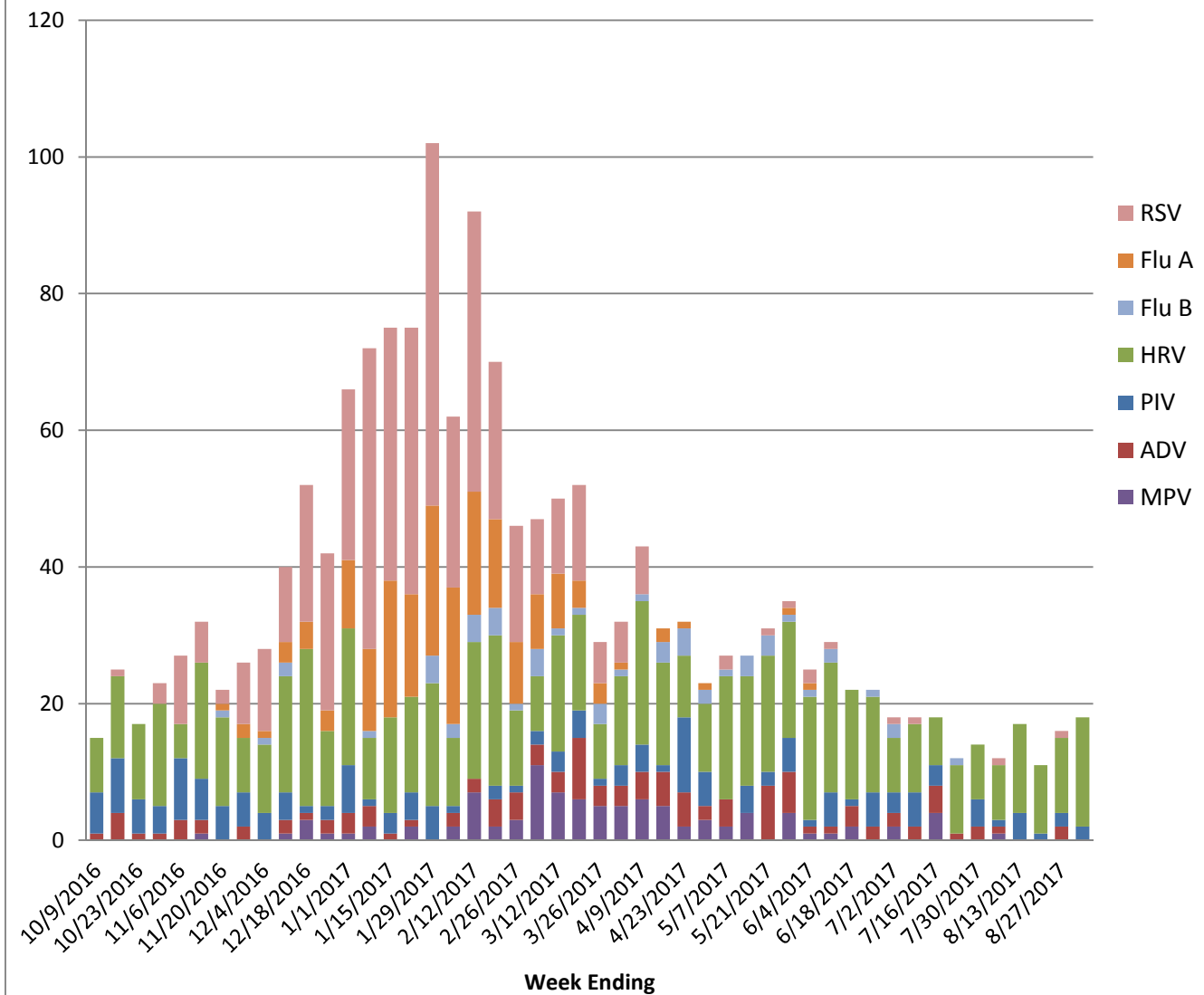
	Positive Tests Current Week	Total Tests Current Week	Positive Tests YTD*	Total Tests YTD*
RSV (DFA and PCR)	0	45	467	3340
Influenza A (EIA, DFA, and PCR)	0	47	183	4714
Influenza B (EIA, DFA, and PCR)	0	47	55	4714
Parainfluenza (PCR and DFA)	2	44	165	3122
Adenovirus (PCR and DFA)	0	44	115	3122
Rhinovirus (PCR)	16	38	639	2435
Metapneumovirus (PCR)	0	38	96	2435
B. pertussis/parapertussis (PCR)	3	53	235	3420
Enterovirus, CSF (PCR)	2	14	38	474

\*From October 3, 2016.

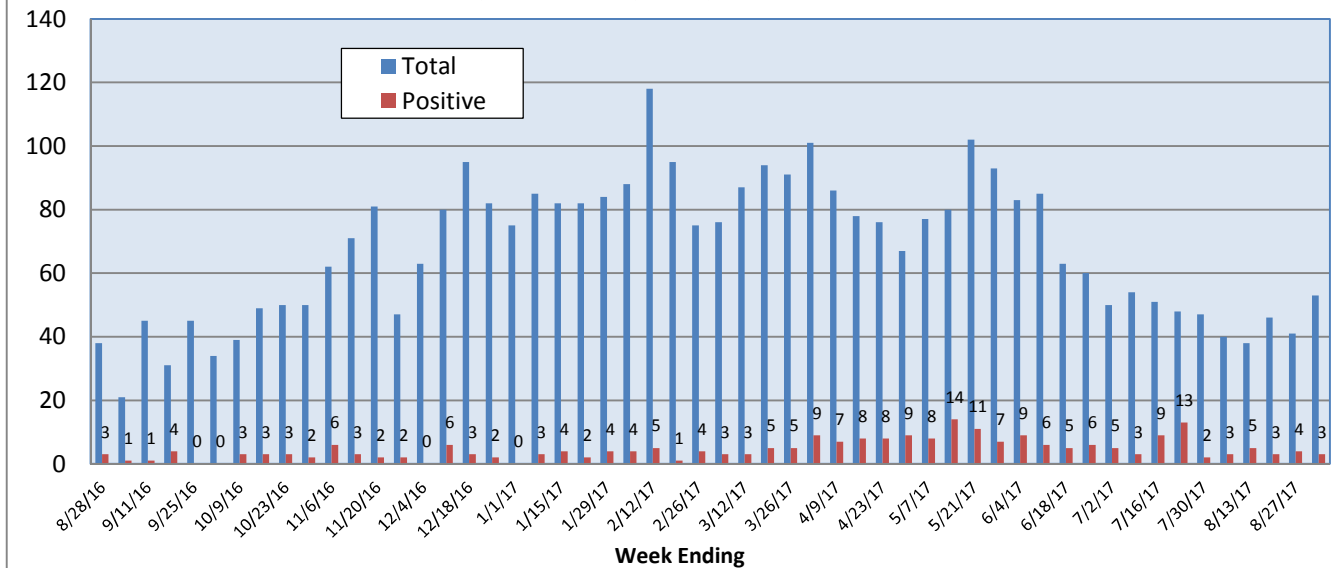


# Pathogens Report

## Positive Respiratory Viruses by Week



## *B. pertussis/parapertussis* PCR



# Pathogens Report

