

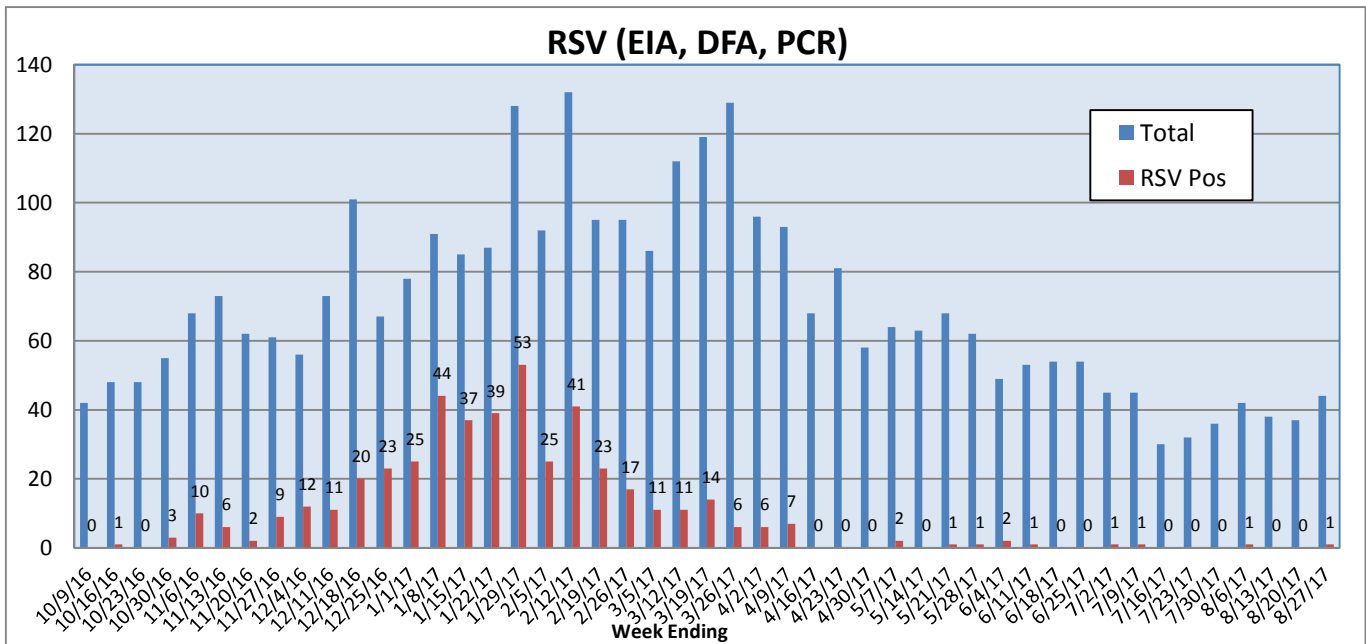
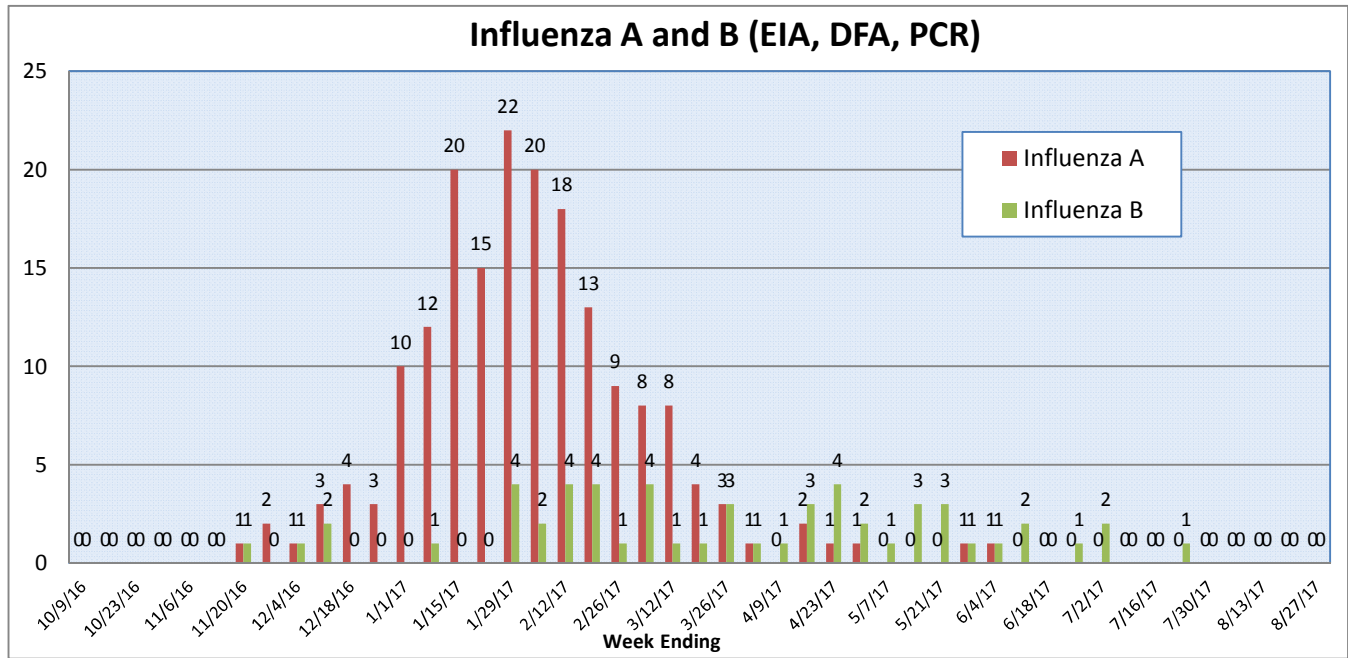
## Pathogens Report

The following report is a listing of selected pathogens detected at Rady Children's Hospital Laboratory. The report includes data from adult and pediatric specimens collected locally.

**August 21-27, 2017**

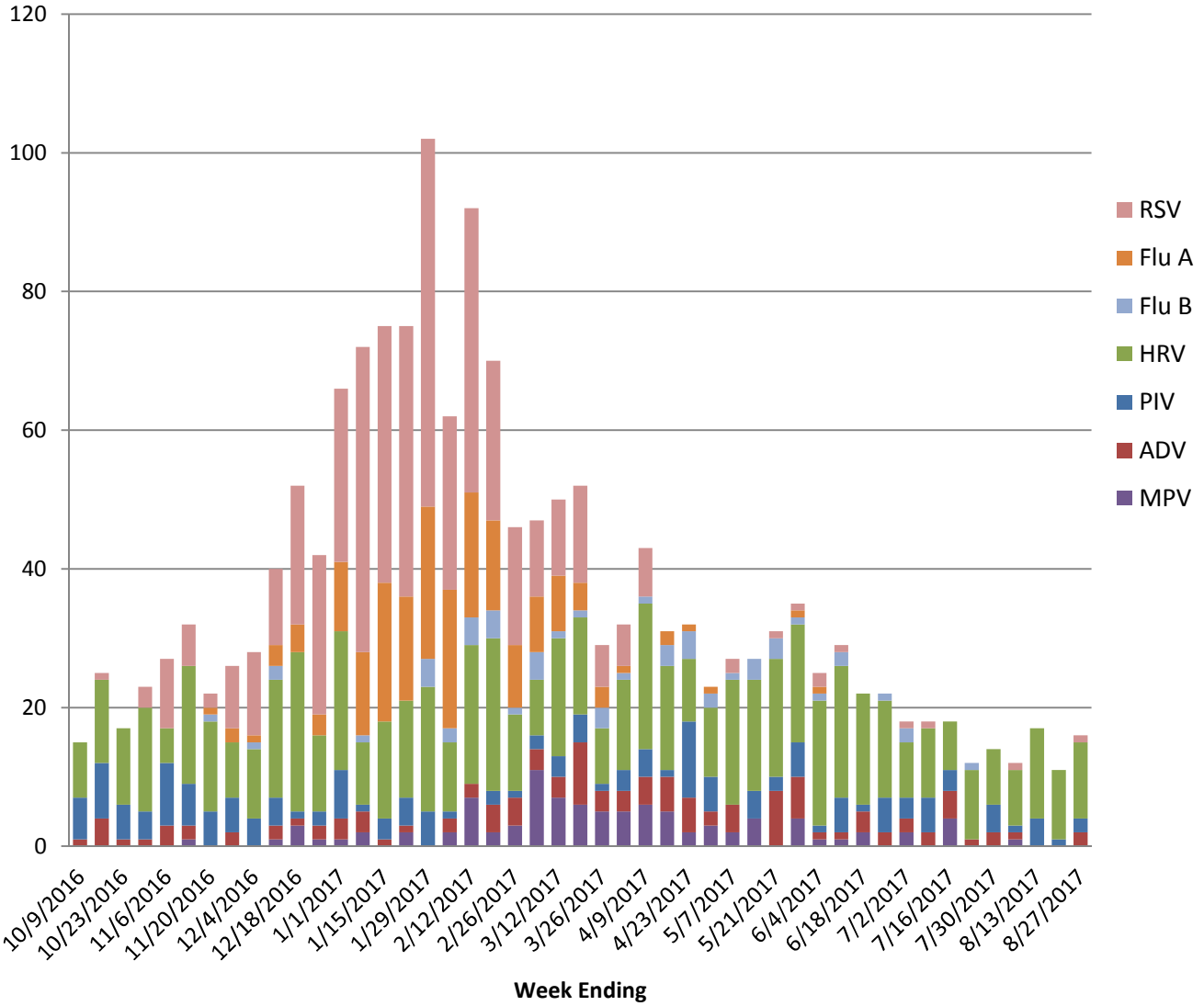
	Positive Tests Current Week	Total Tests Current Week	Positive Tests YTD*	Total Tests YTD*
<b>RSV (DFA and PCR)</b>	1	44	467	3295
<b>Influenza A (EIA, DFA, and PCR)</b>	0	44	183	4667
<b>Influenza B (EIA, DFA, and PCR)</b>	0	44	55	4667
<b>Parainfluenza (PCR and DFA)</b>	2	44	163	3078
<b>Adenovirus (PCR and DFA)</b>	2	44	115	3078
<b>Rhinovirus (PCR)</b>	11	40	623	2397
<b>Metapneumovirus (PCR)</b>	0	40	96	2397
<b>B. pertussis/parapertussis (PCR)</b>	4	41	232	3367
<b>Enterovirus, CSF (PCR)</b>	1	9	36	460

\*From October 3, 2016.

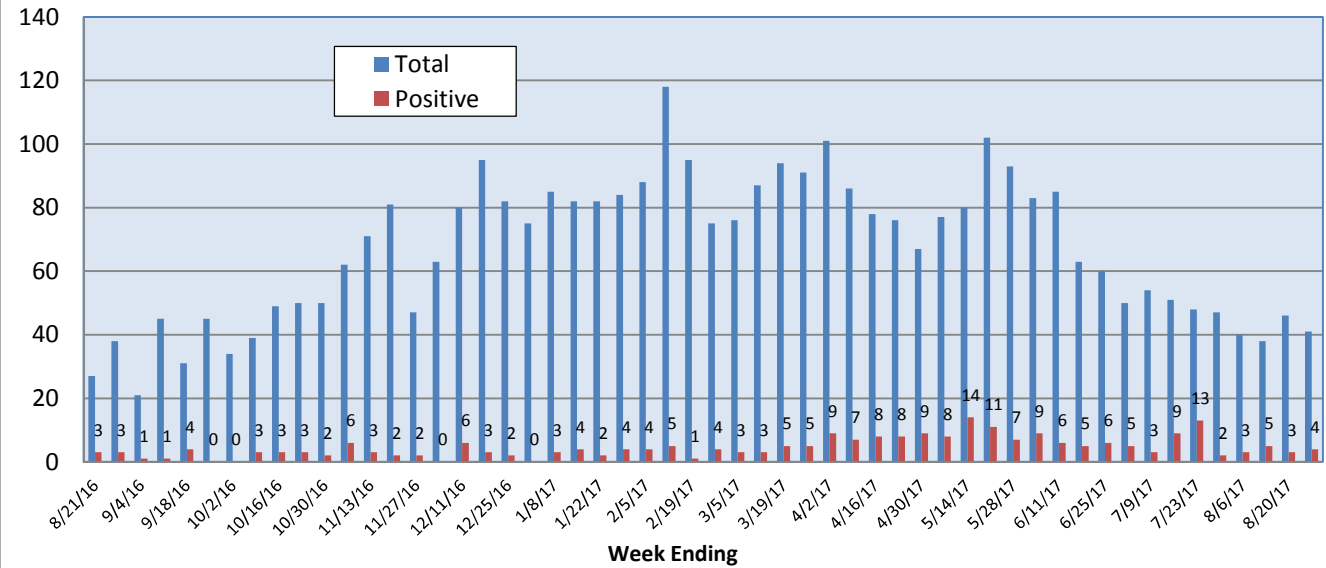


# Pathogens Report

## Positive Respiratory Viruses by Week



## *B. pertussis/parapertussis* PCR



# Pathogens Report

