

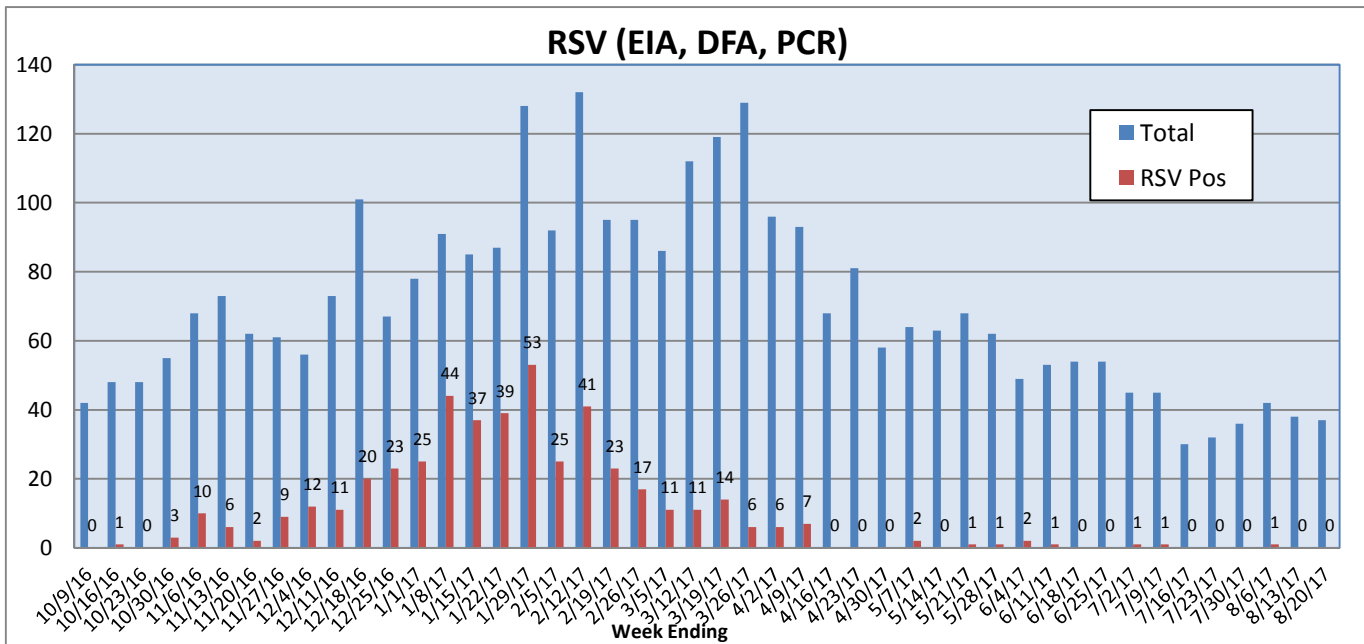
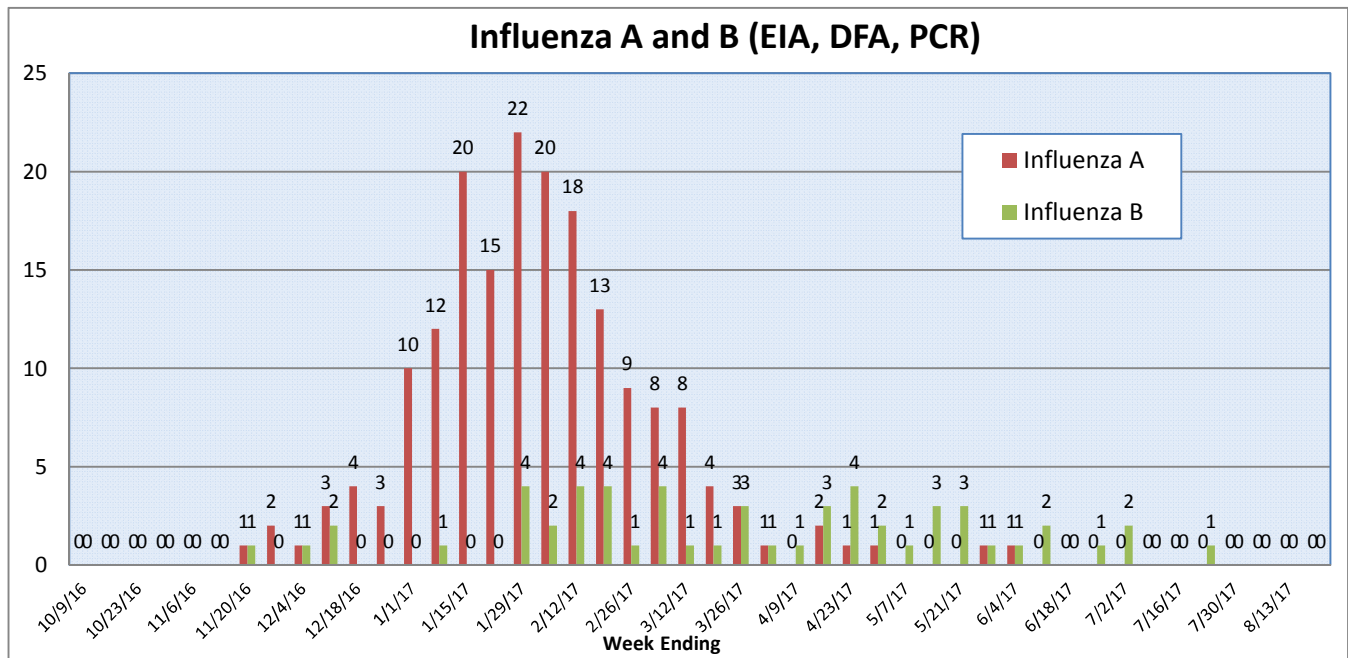
## Pathogens Report

The following report is a listing of selected pathogens detected at Rady Children's Hospital Laboratory. The report includes data from adult and pediatric specimens collected locally.

**August 14-20, 2017**

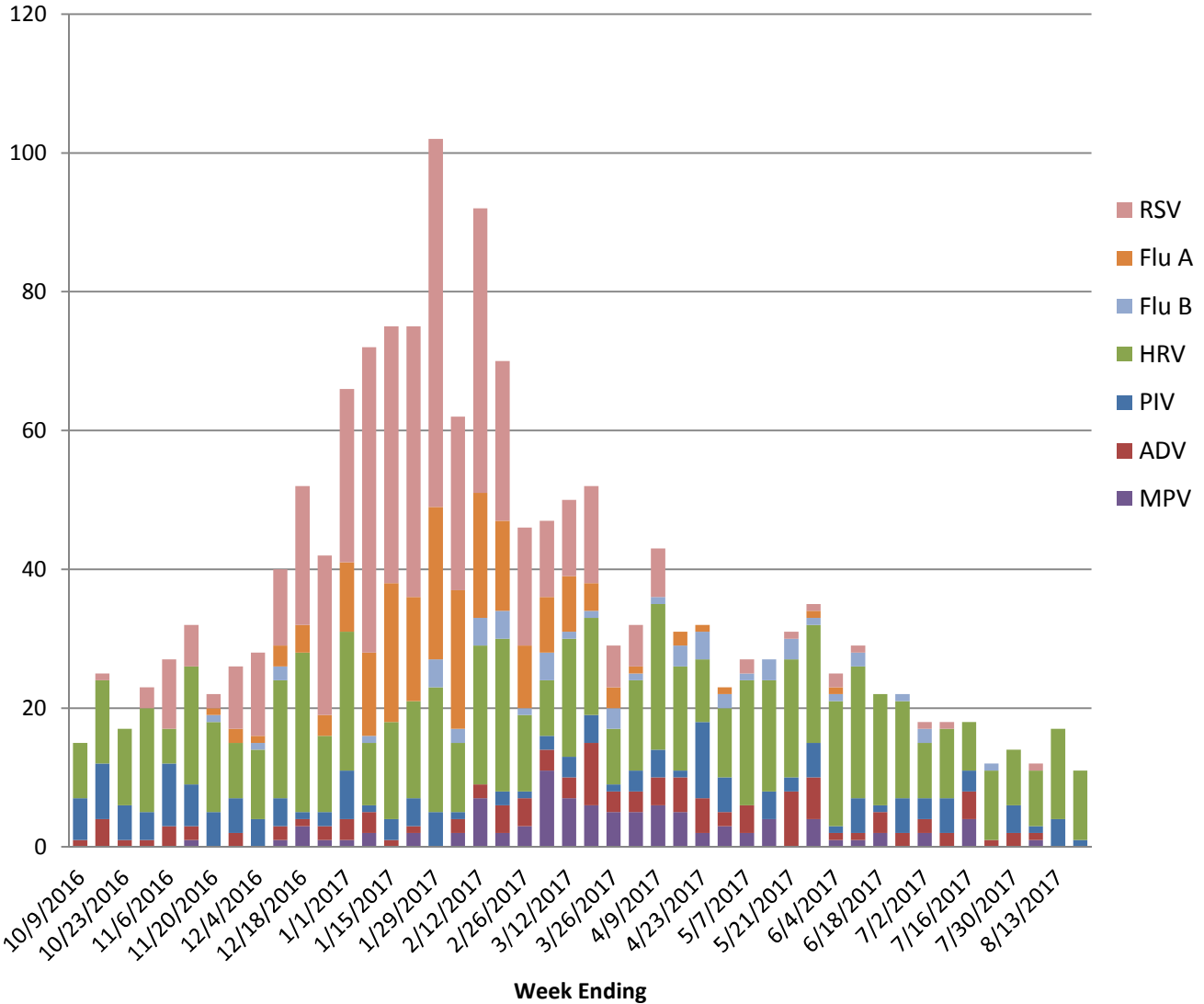
	Positive Tests Current Week	Total Tests Current Week	Positive Tests YTD*	Total Tests YTD*
<b>RSV (DFA and PCR)</b>	0	37	466	3251
<b>Influenza A (EIA, DFA, and PCR)</b>	0	38	183	4623
<b>Influenza B (EIA, DFA, and PCR)</b>	0	38	55	4623
<b>Parainfluenza (PCR and DFA)</b>	1	38	161	3034
<b>Adenovirus (PCR and DFA)</b>	0	38	113	3034
<b>Rhinovirus (PCR)</b>	10	36	612	2357
<b>Metapneumovirus (PCR)</b>	0	36	96	2357
<b>B. pertussis/parapertussis (PCR)</b>	3	46	228	3326
<b>Enterovirus, CSF (PCR)</b>	3	13	35	451

\*From October 3, 2016.

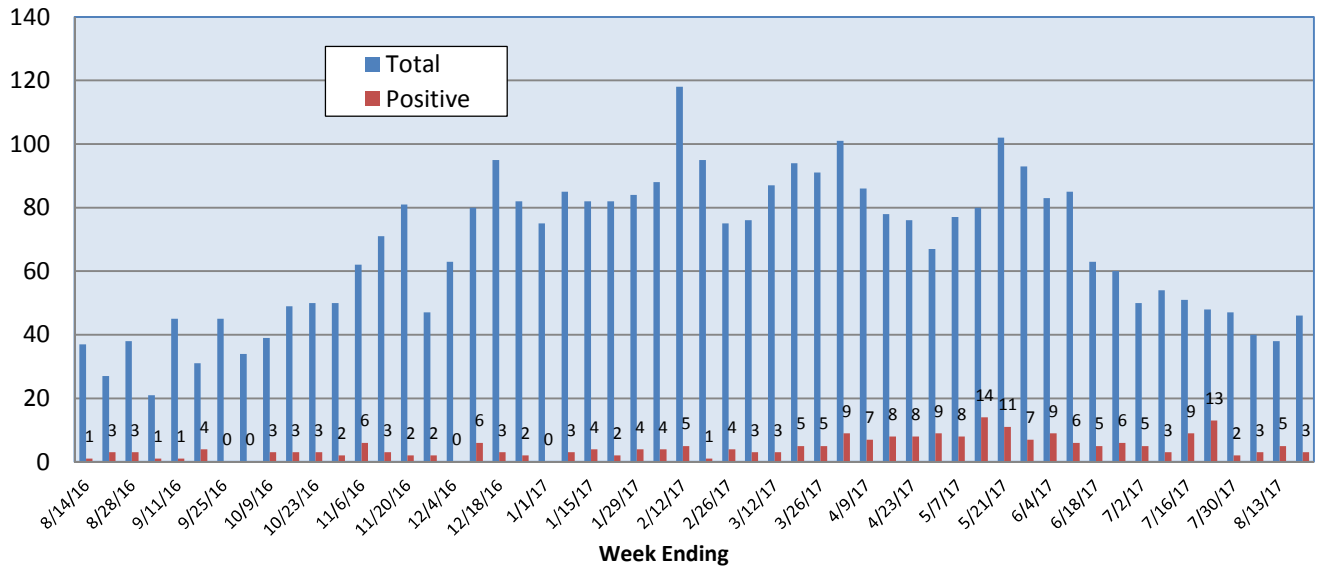


# Pathogens Report

## Positive Respiratory Viruses by Week



## *B. pertussis/parapertussis* PCR



# Pathogens Report

