

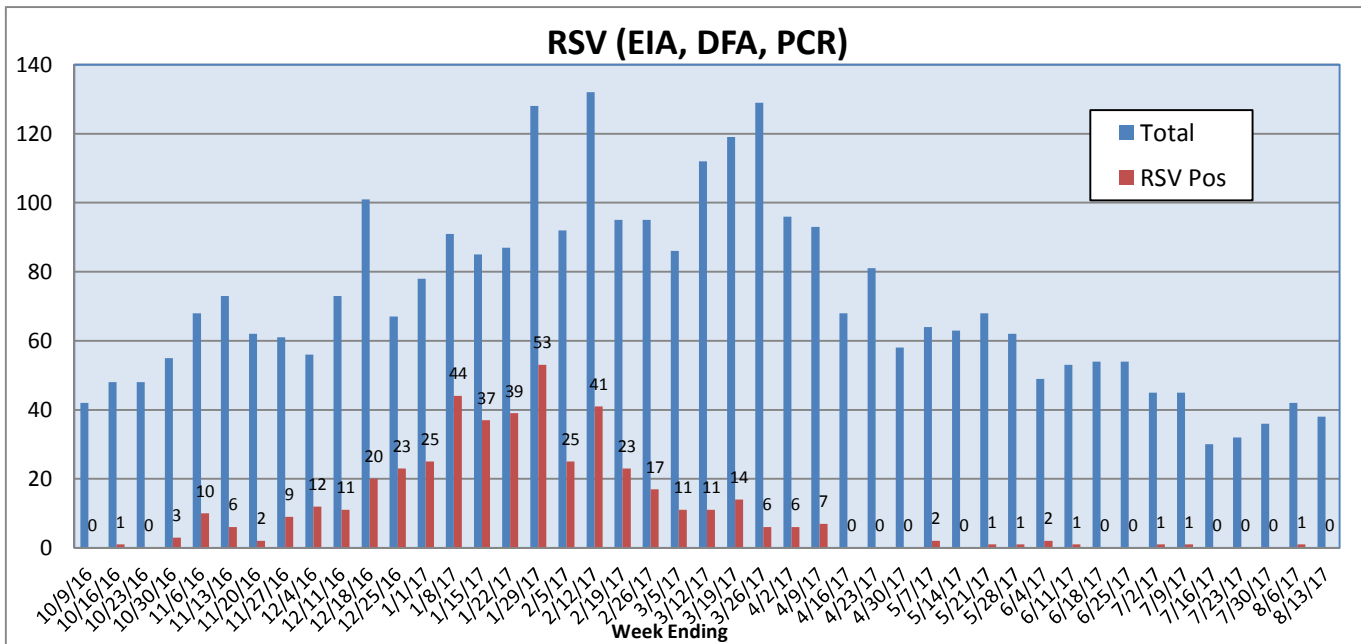
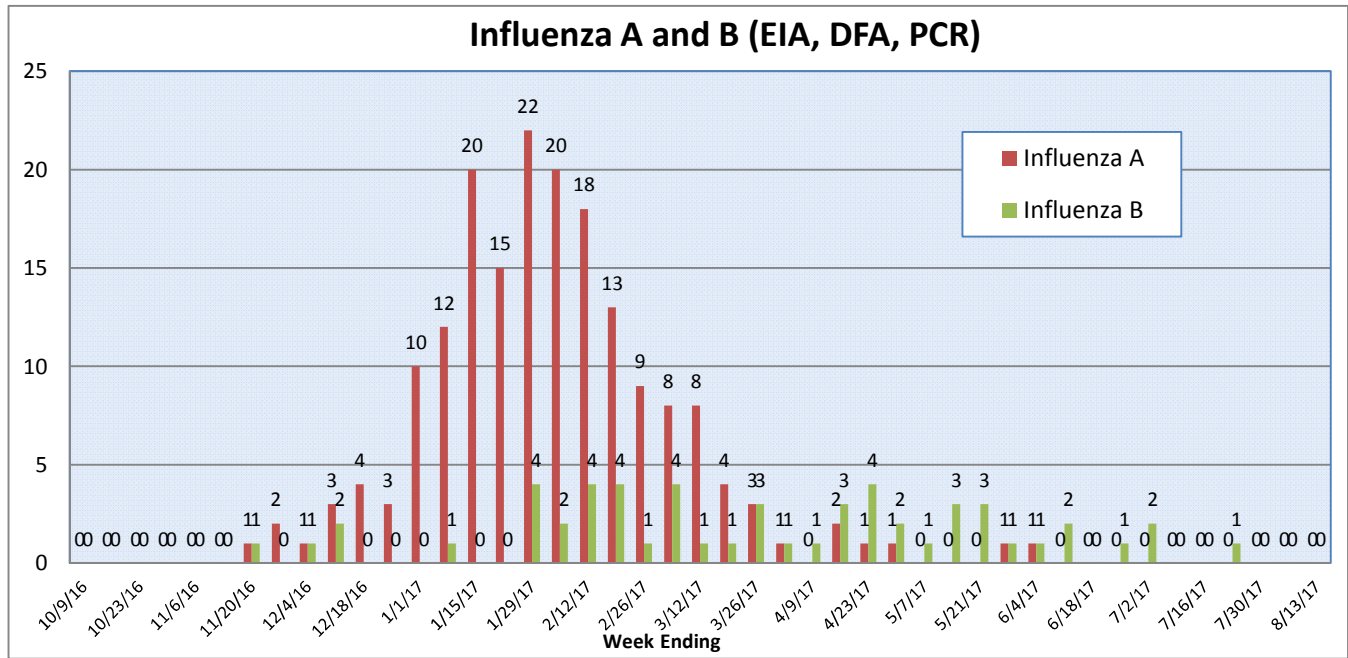
Pathogens Report

The following report is a listing of selected pathogens detected at Rady Children's Hospital Laboratory. The report includes data from adult and pediatric specimens collected locally.

August 7-13, 2017

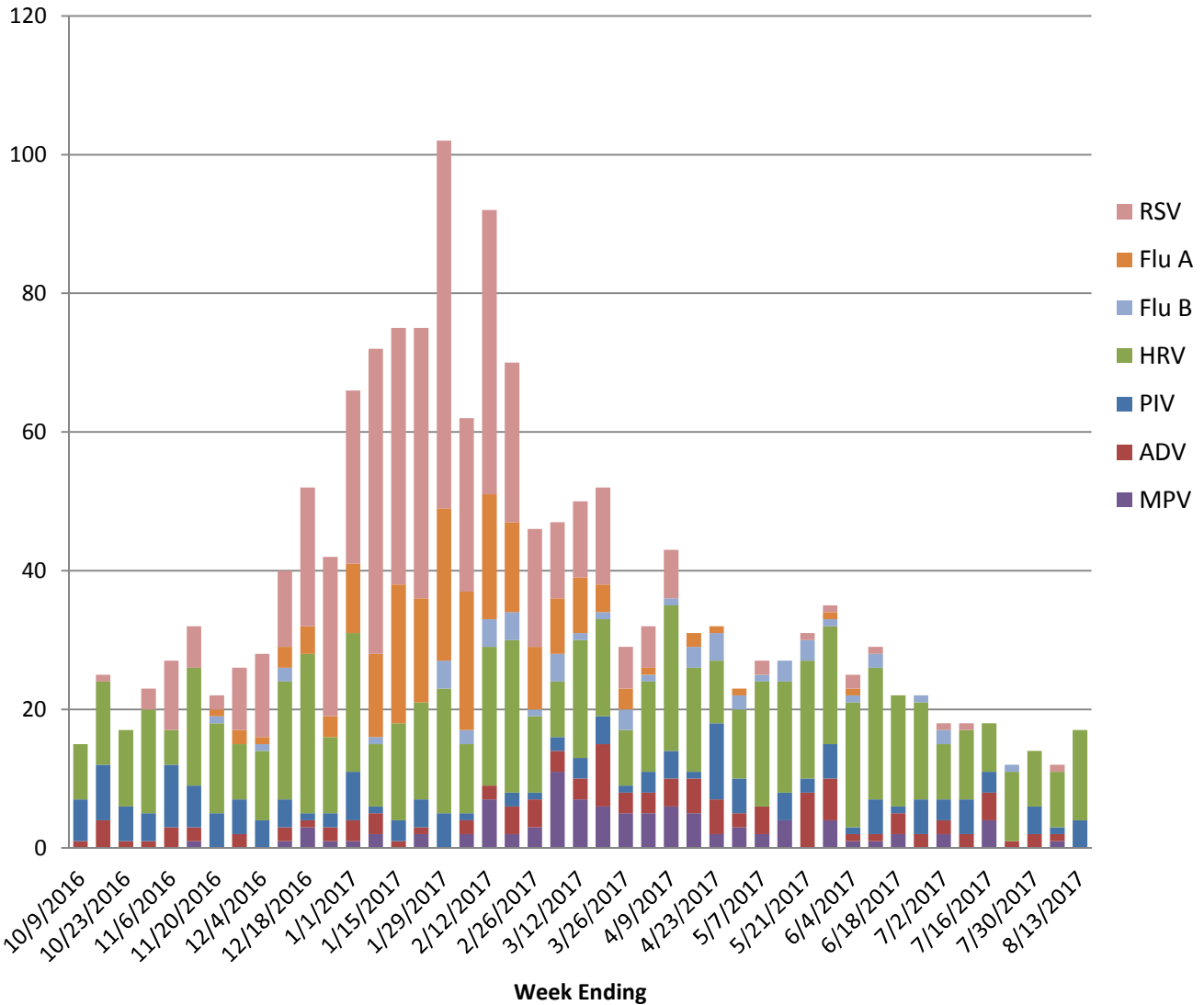
	Positive Tests Current Week	Total Tests Current Week	Positive Tests YTD*	Total Tests YTD*
RSV (DFA and PCR)	0	38	466	3214
Influenza A (EIA, DFA, and PCR)	0	38	183	4585
Influenza B (EIA, DFA, and PCR)	0	38	55	4585
Parainfluenza (PCR and DFA)	4	38	160	3000
Adenovirus (PCR and DFA)	0	38	113	3000
Rhinovirus (PCR)	13	37	602	2325
Metapneumovirus (PCR)	0	37	96	2325
B. pertussis/parapertussis (PCR)	5	38	225	3280
Enterovirus, CSF (PCR)	2	11	32	438

*From October 3, 2016.

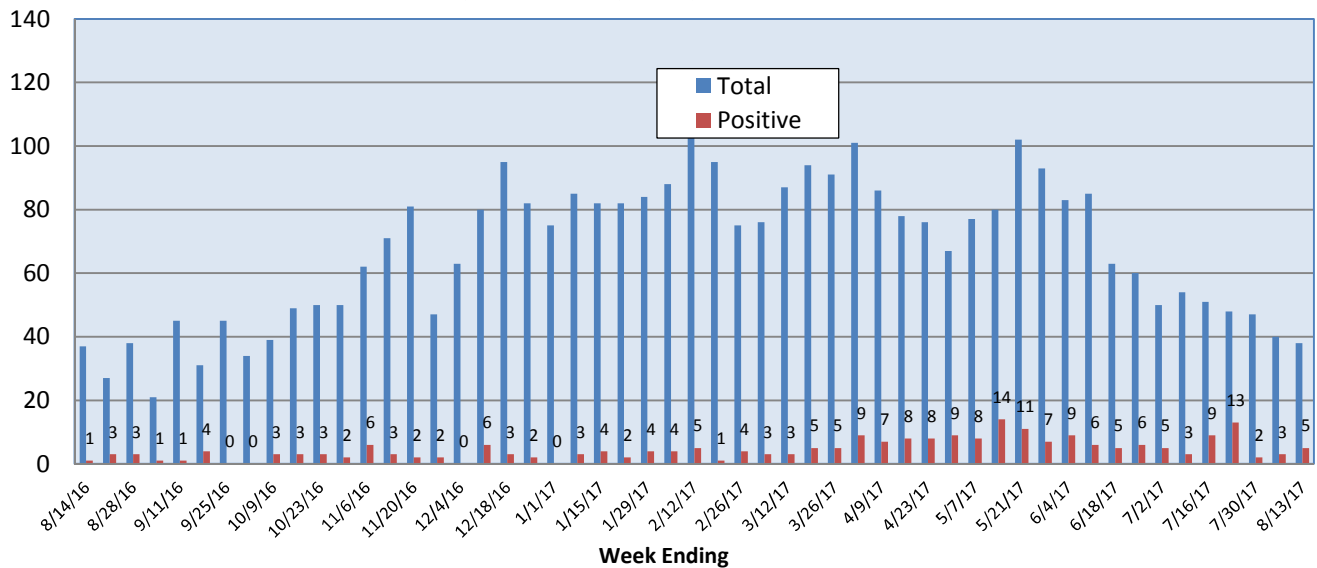


Pathogens Report

Positive Respiratory Viruses by Week



B. pertussis/parapertussis PCR



Pathogens Report

