

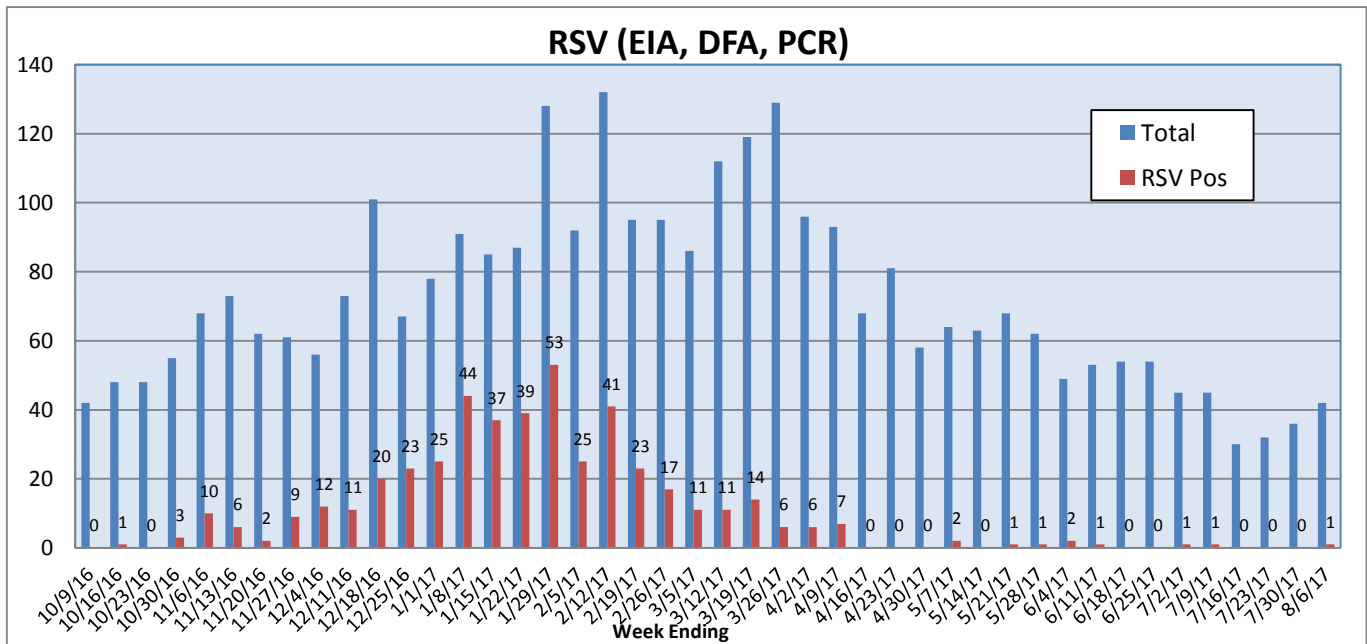
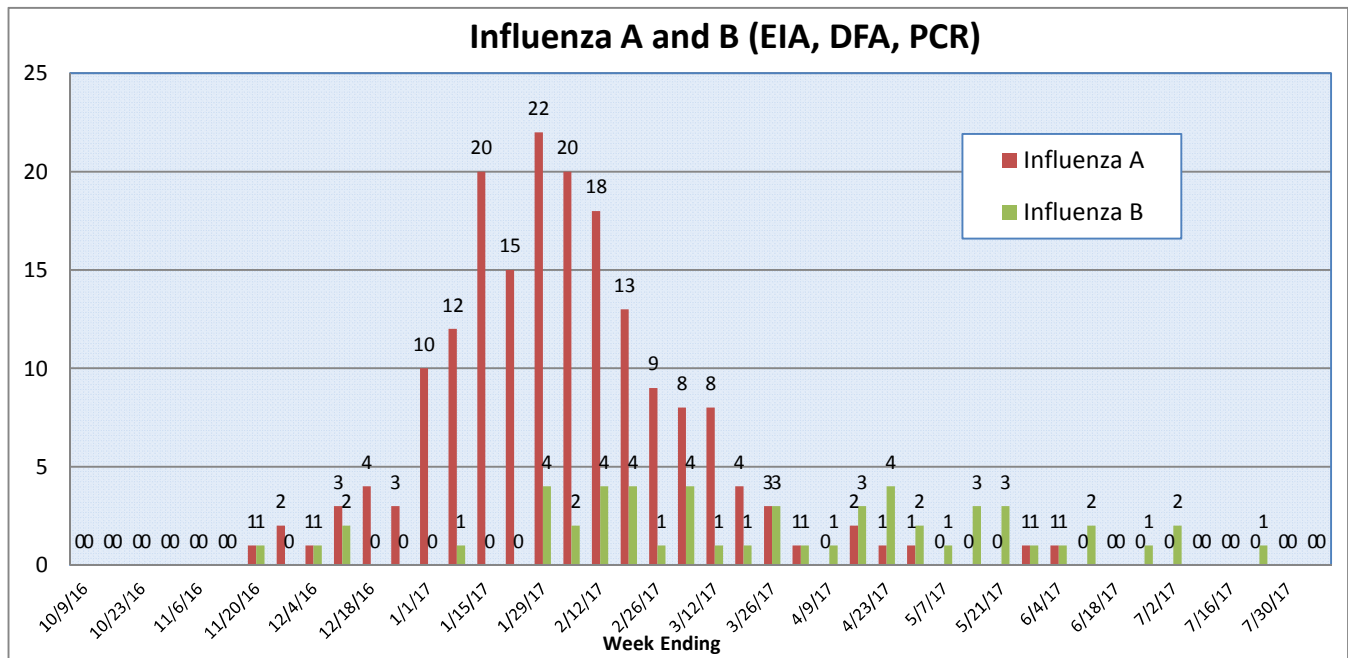
Pathogens Report

The following report is a listing of selected pathogens detected at Rady Children's Hospital Laboratory. The report includes data from adult and pediatric specimens collected locally.

July 31 - August 6, 2017

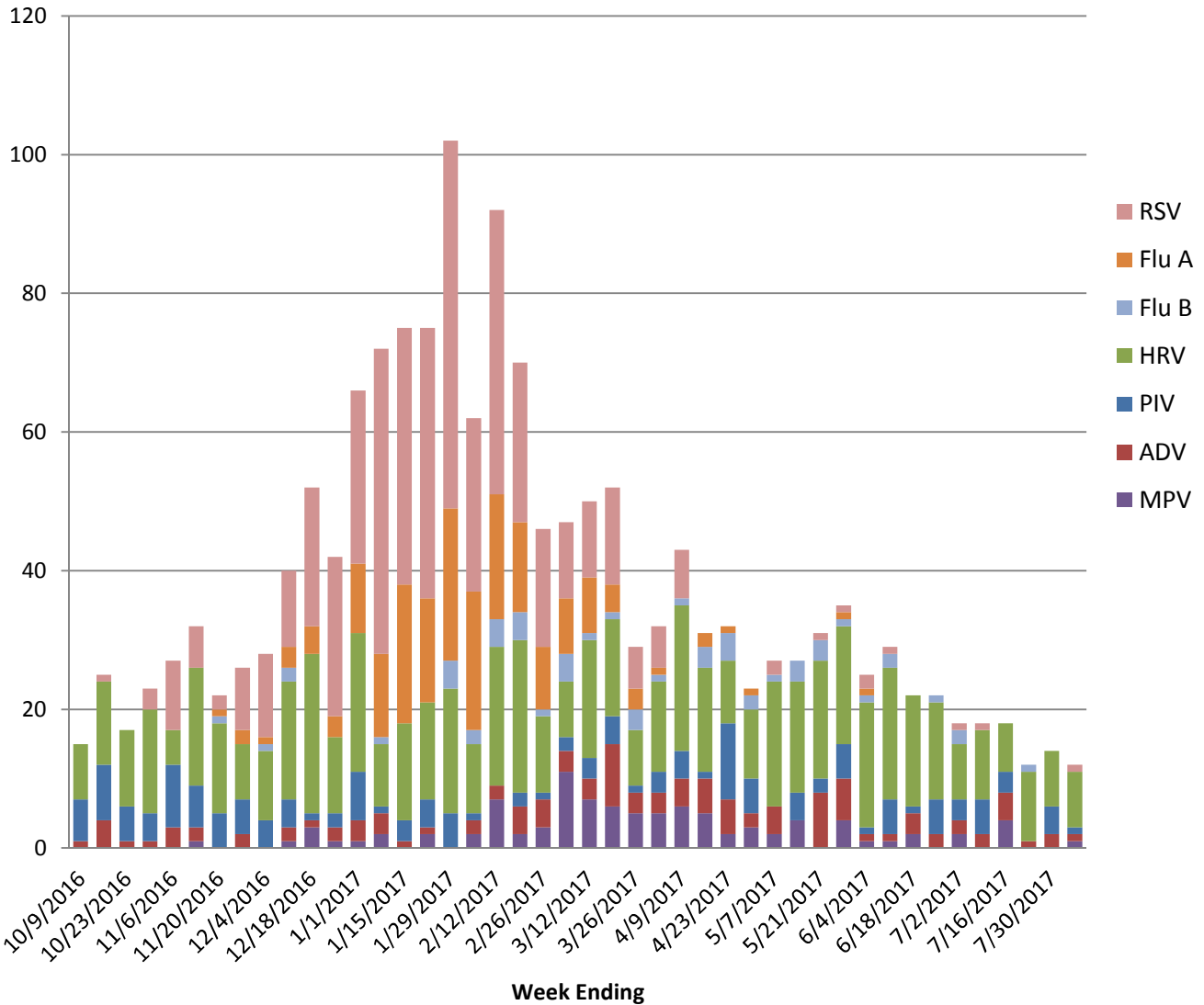
	Positive Tests Current Week	Total Tests Current Week	Positive Tests YTD*	Total Tests YTD*
RSV (DFA and PCR)	1	42	466	3176
Influenza A (EIA, DFA, and PCR)	0	43	183	4547
Influenza B (EIA, DFA, and PCR)	0	43	55	4547
Parainfluenza (PCR and DFA)	1	42	156	2962
Adenovirus (PCR and DFA)	1	42	113	2962
Rhinovirus (PCR)	8	39	589	2288
Metapneumovirus (PCR)	1	39	96	2288
B. pertussis/parapertussis (PCR)	3	40	220	3242
Enterovirus, CSF (PCR)	2	13	30	427

*From October 3, 2016.

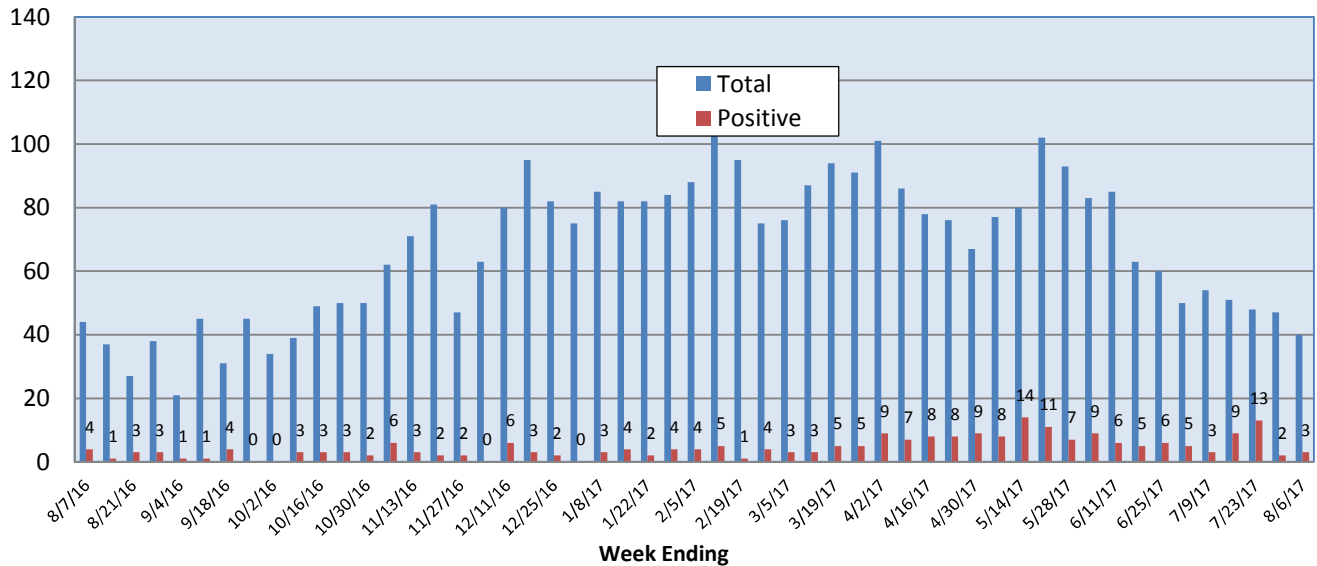


Pathogens Report

Positive Respiratory Viruses by Week

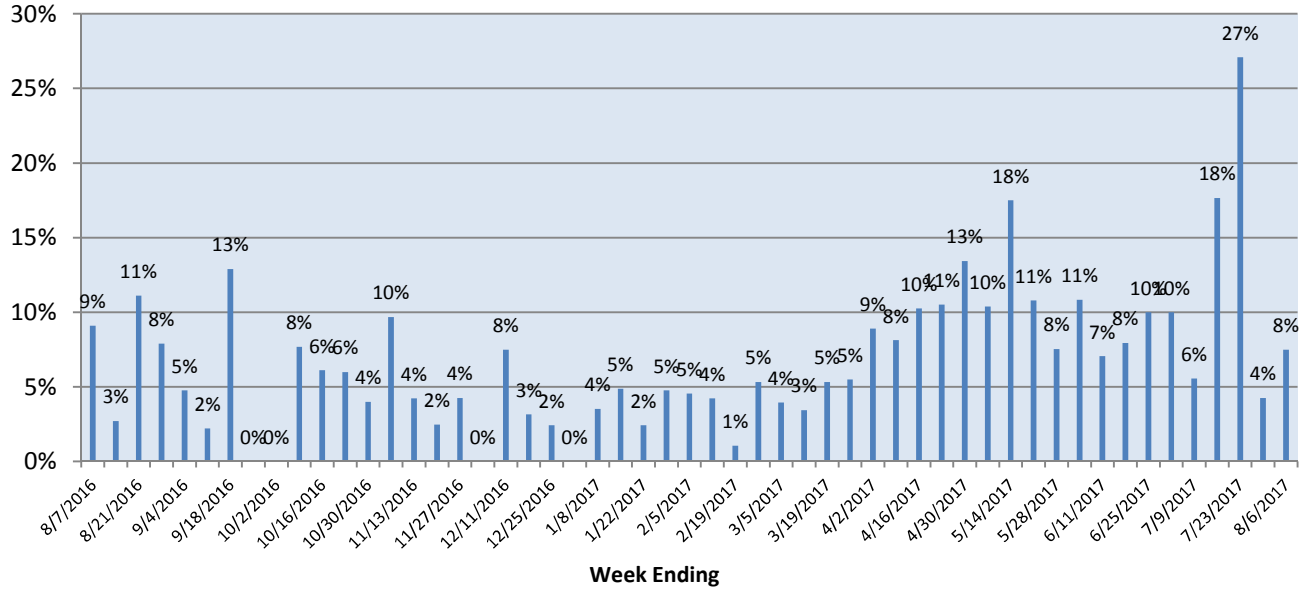


B. pertussis/parapertussis PCR



Pathogens Report

B. pertussis/parapertussis Positive Rate (%)



Enterovirus, CSF

