

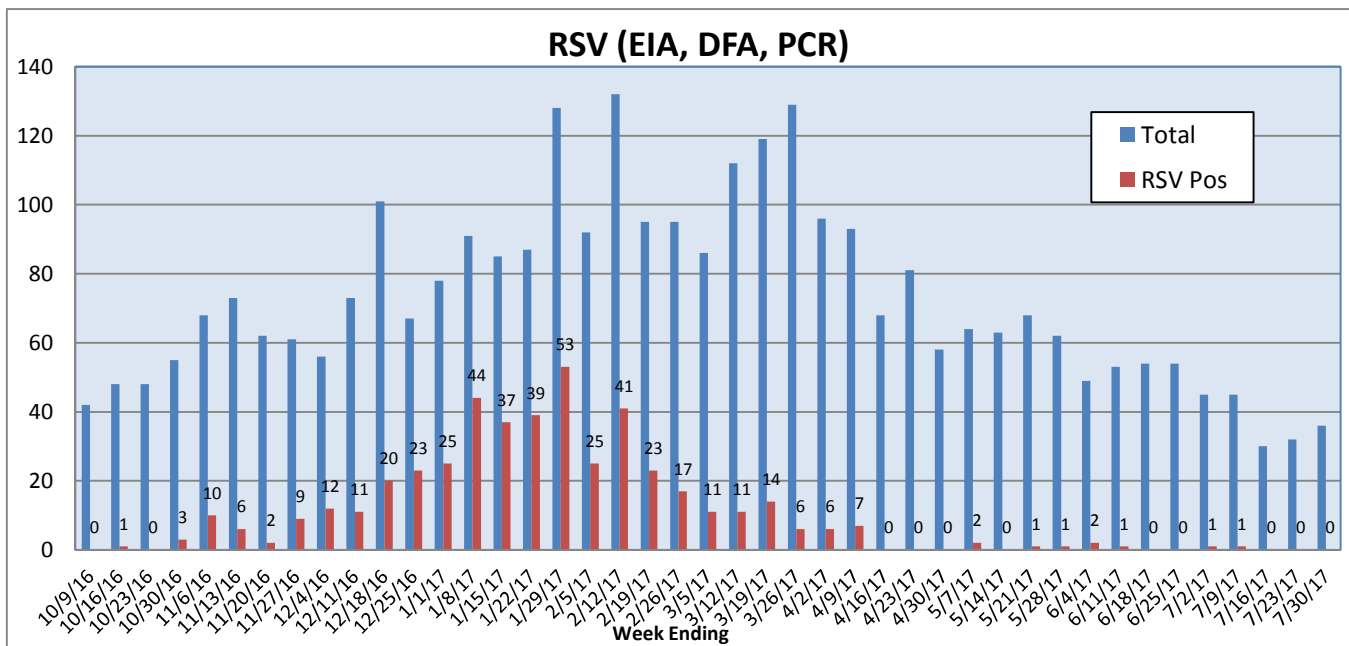
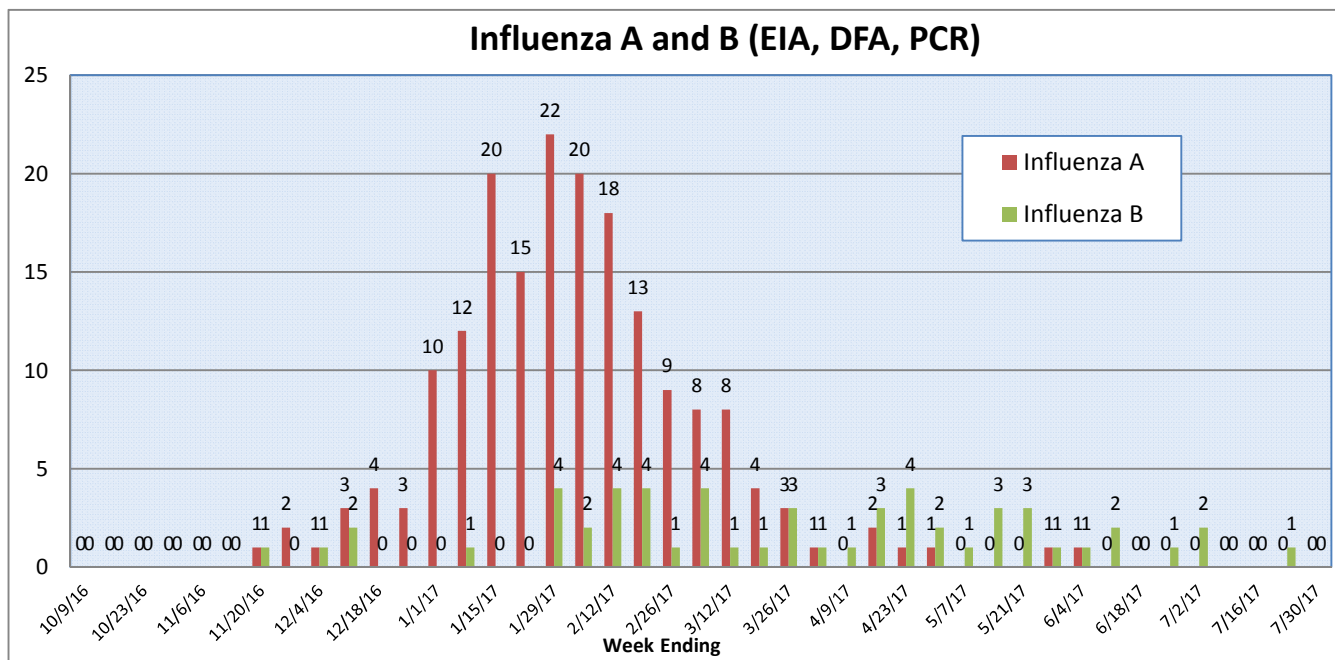
## Pathogens Report

The following report is a listing of selected pathogens detected at Rady Children's Hospital Laboratory. The report includes data from adult and pediatric specimens collected locally.

July 24-30, 2017

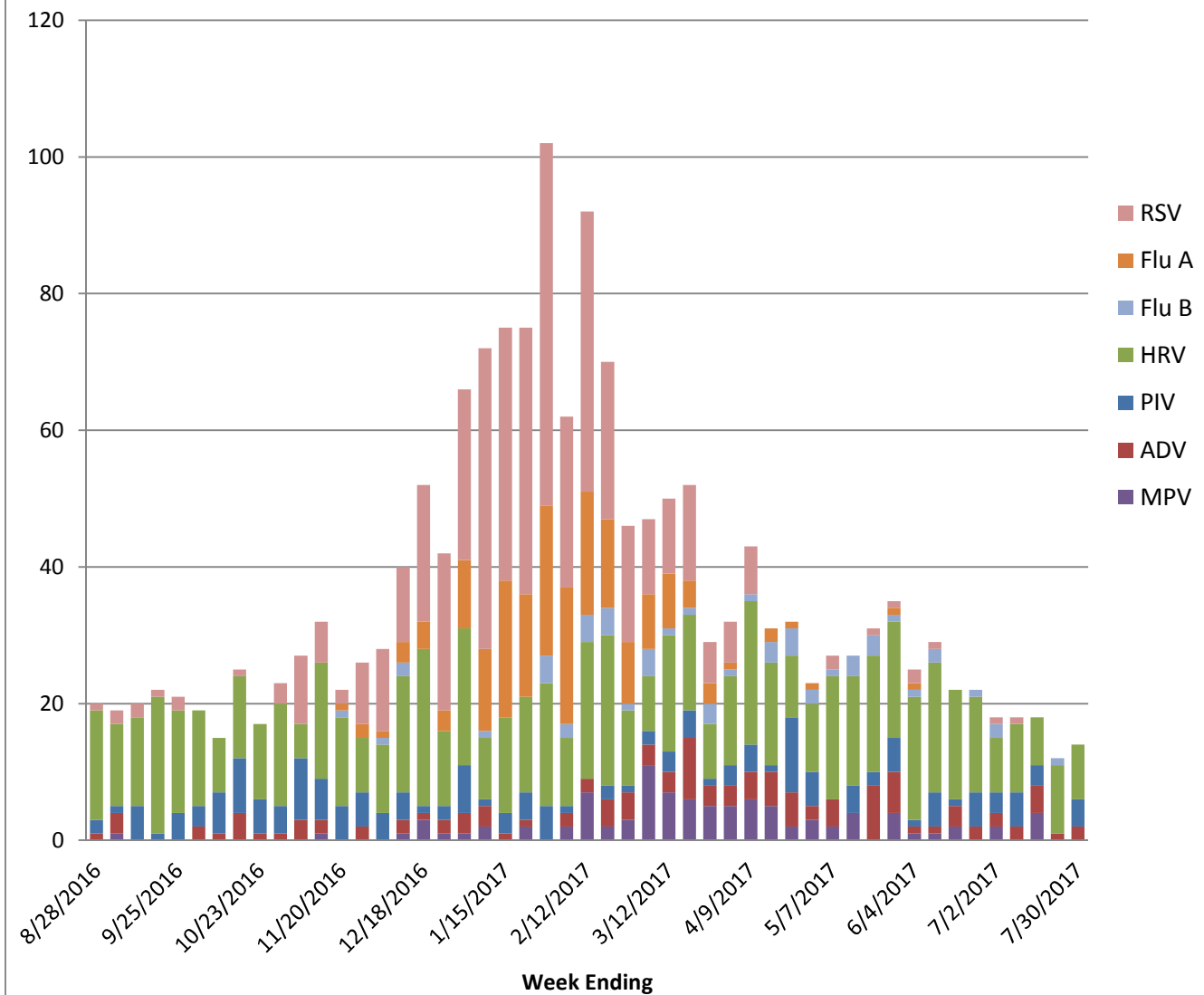
	Positive Tests Current Week	Total Tests Current Week	Positive Tests YTD*	Total Tests YTD*
RSV (DFA and PCR)	0	36	465	3134
Influenza A (EIA, DFA, and PCR)	0	36	183	4504
Influenza B (EIA, DFA, and PCR)	0	36	55	4504
Parainfluenza (PCR and DFA)	4	36	155	2920
Adenovirus (PCR and DFA)	2	36	112	2920
Rhinovirus (PCR)	8	35	581	2249
Metapneumovirus (PCR)	0	35	95	2249
B. pertussis/parapertussis (PCR)	2	47	215	3155
Enterovirus, CSF (PCR)	0	6	28	408

\*From October 3, 2016.

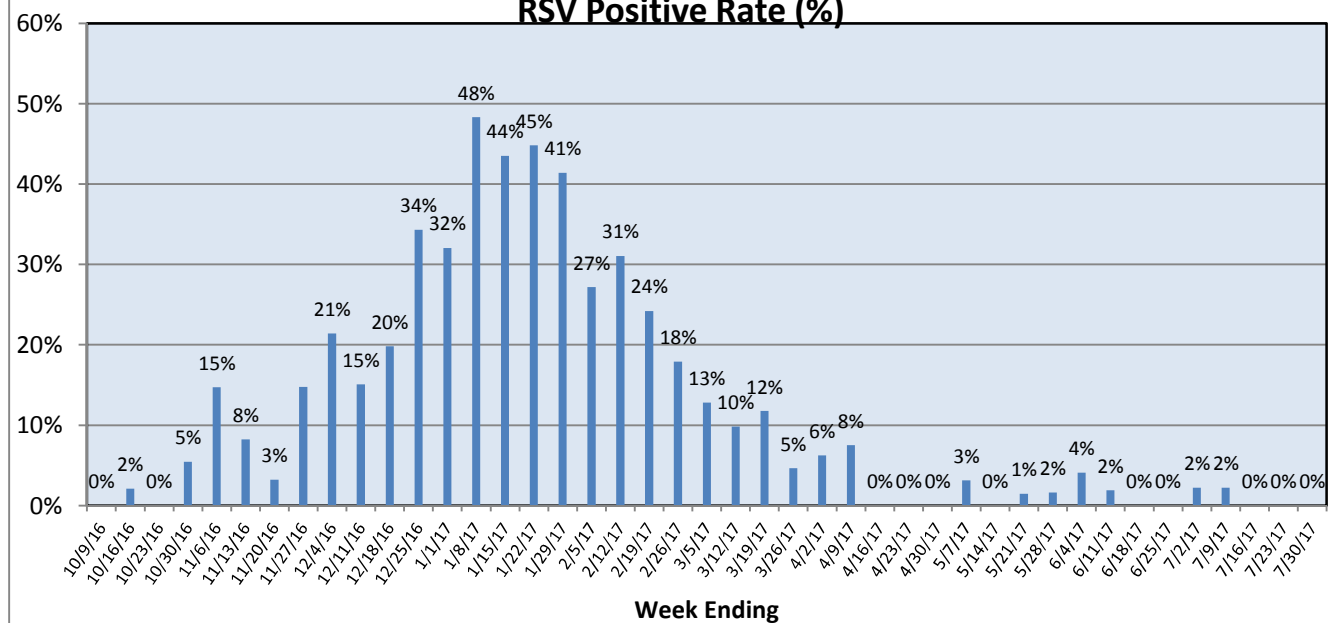


# Pathogens Report

## Positive Respiratory Viruses by Week

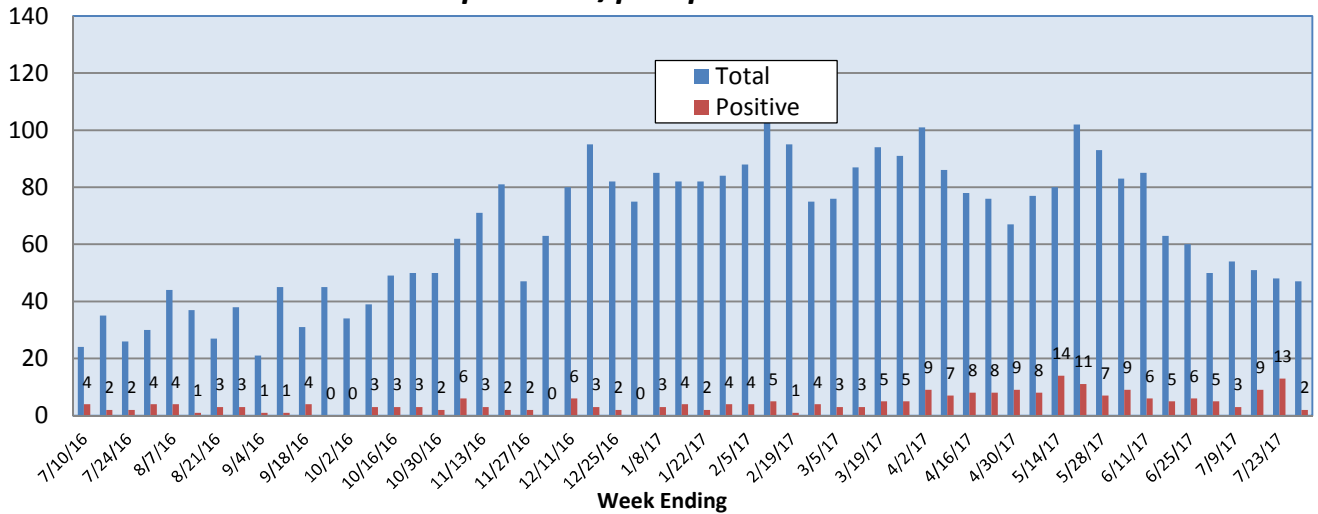


## RSV Positive Rate (%)

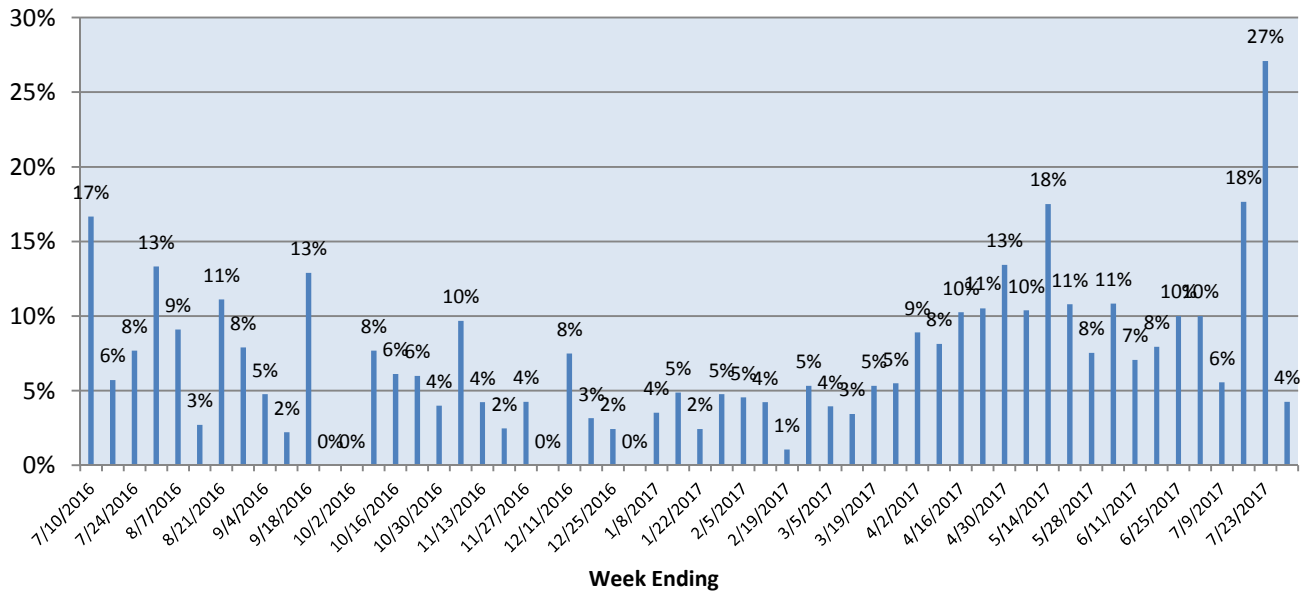


# Pathogens Report

## *B. pertussis/parapertussis* PCR



## *B. pertussis/parapertussis* Positive Rate (%)



## Enterovirus, CSF

