

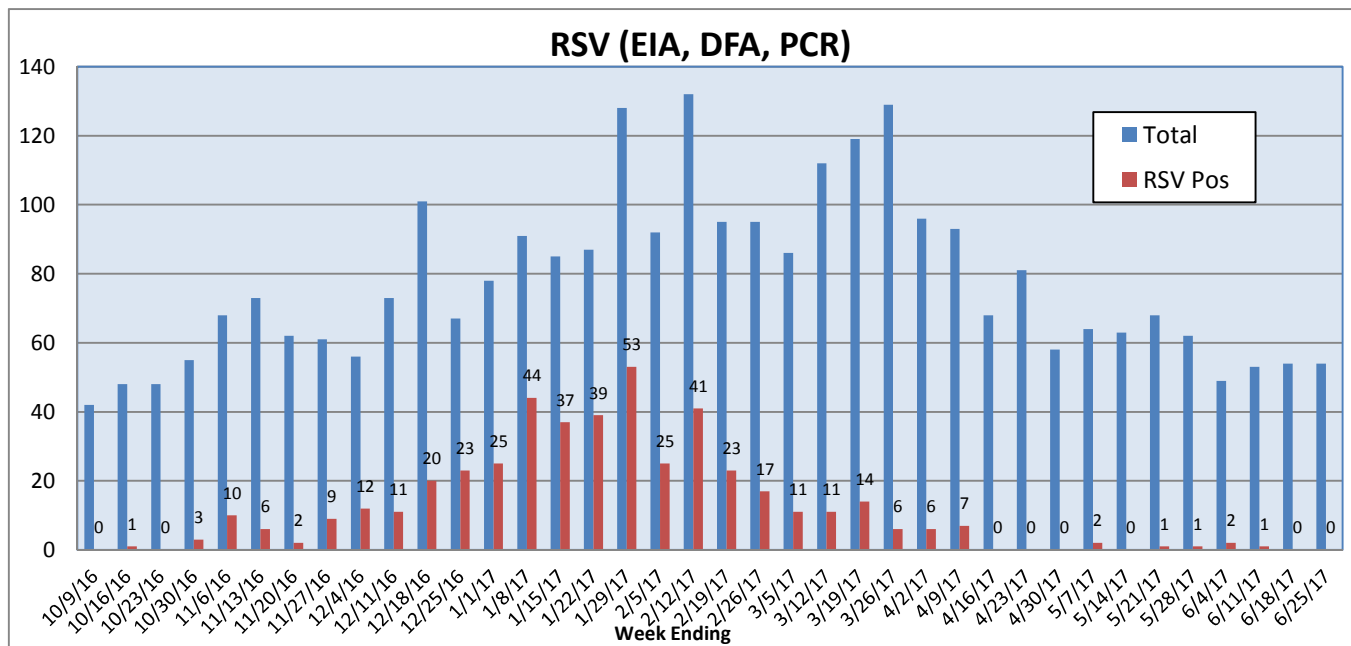
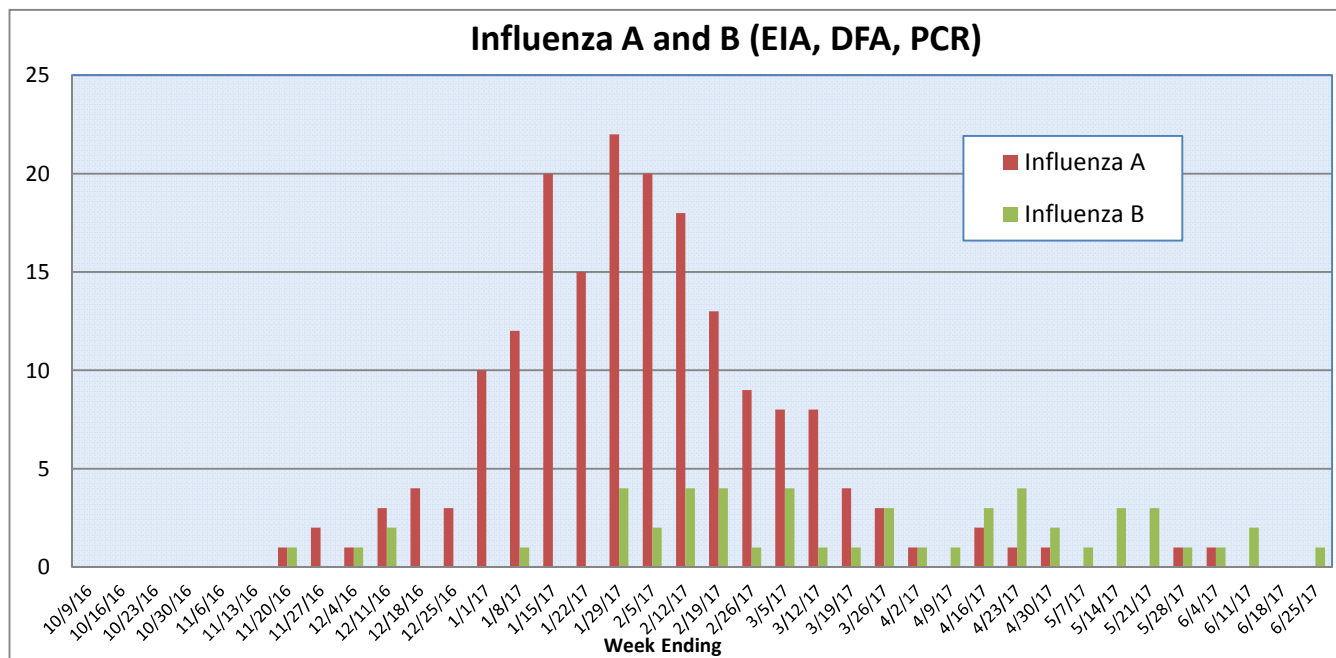
Pathogens Report

The following report is a listing of selected pathogens detected at Rady Children's Hospital Laboratory. The report includes data from adult and pediatric specimens collected locally.

June 19-25, 2017

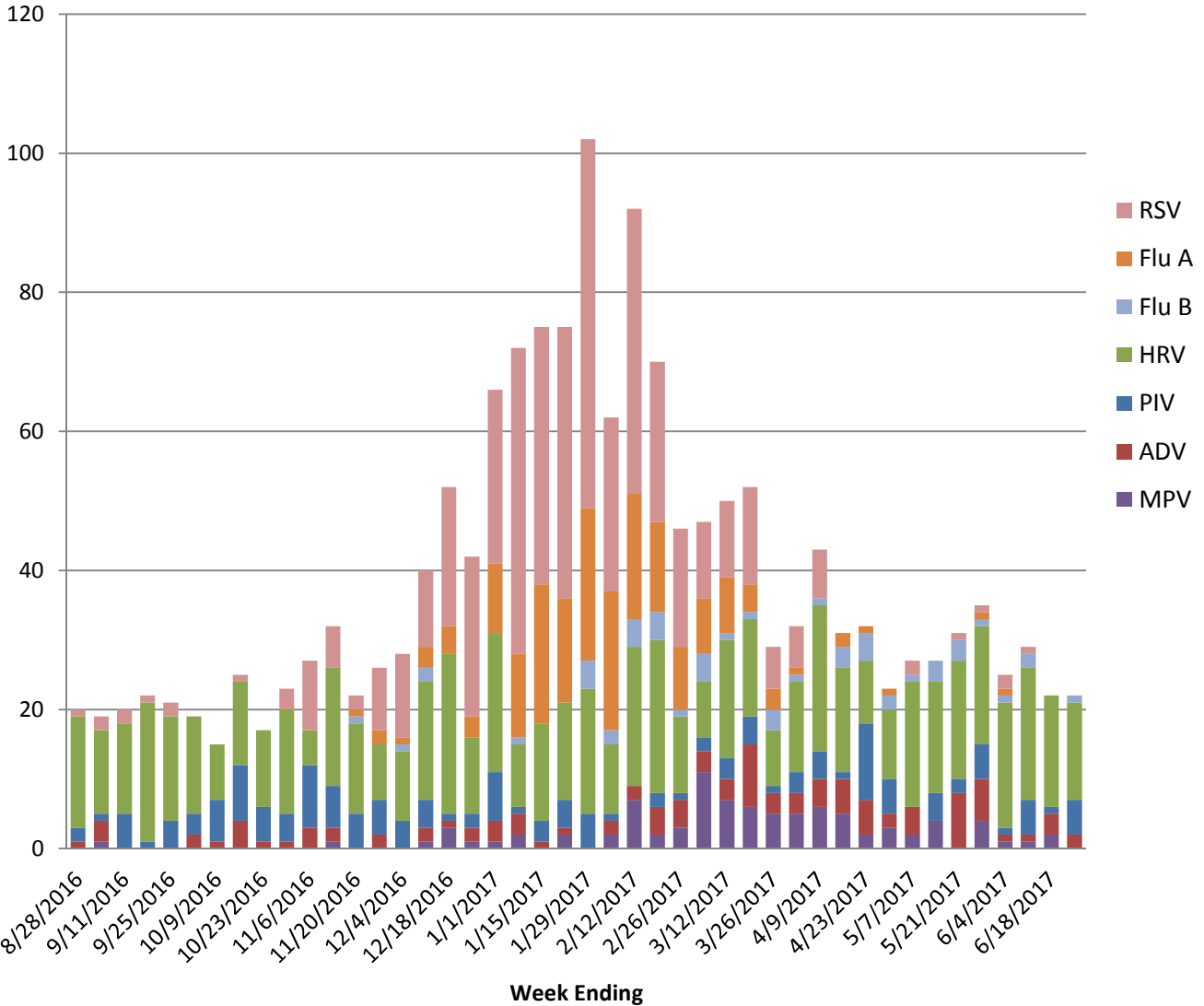
	Positive Tests Current Week	Total Tests Current Week	Positive Tests YTD*	Total Tests YTD*
RSV (DFA and PCR)	0	54	463	2946
Influenza A (EIA, DFA, and PCR)	0	55	183	4307
Influenza B (EIA, DFA, and PCR)	1	55	52	4307
Parainfluenza (PCR and DFA)	5	52	140	2733
Adenovirus (PCR and DFA)	2	52	101	2733
Rhinovirus (PCR)	14	43	538	2082
Metapneumovirus (PCR)	0	43	89	2082
B. pertussis/parapertussis (PCR)	6	60	185	2952
Enterovirus, CSF (PCR)	1	7	20	360

*From October 3, 2016.

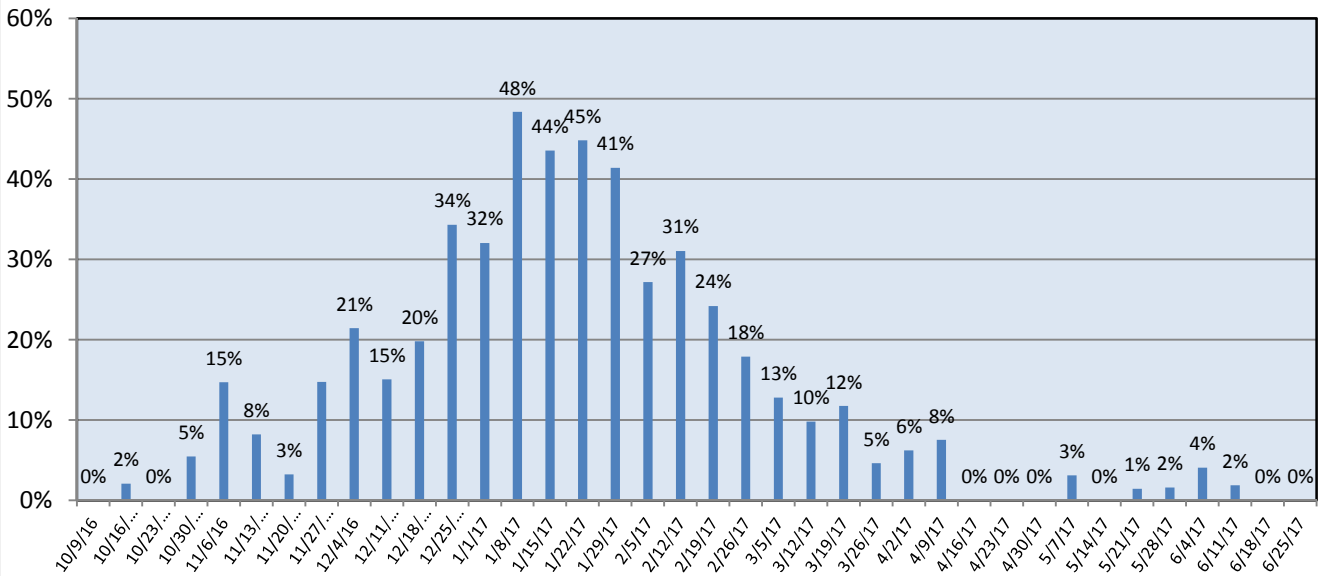


Pathogens Report

Positive Respiratory Viruses by Week

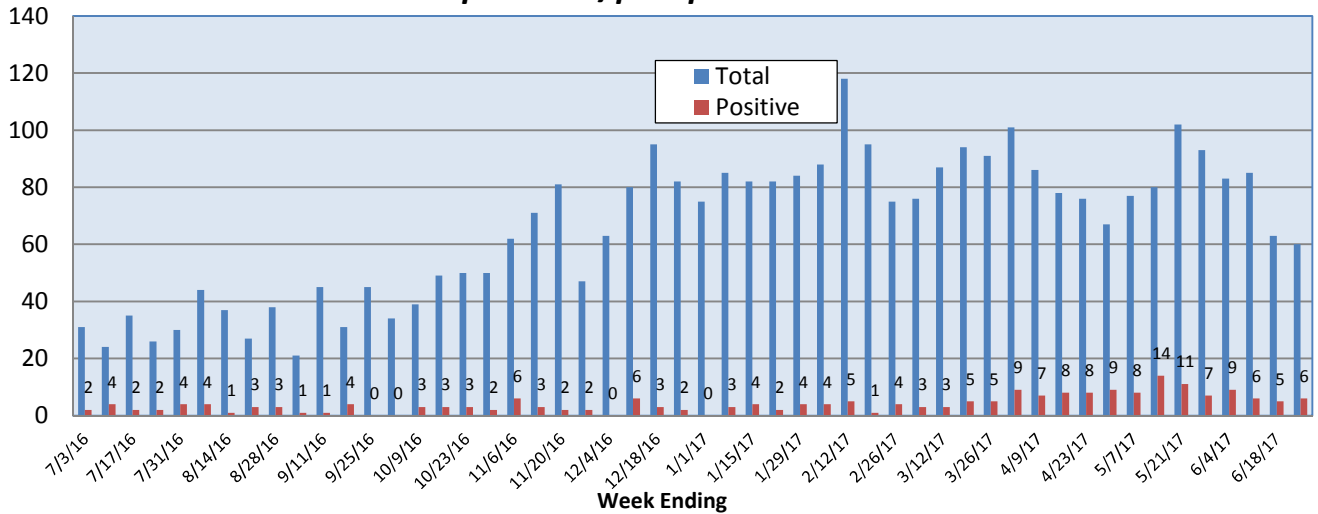


RSV Positive Rate (%)

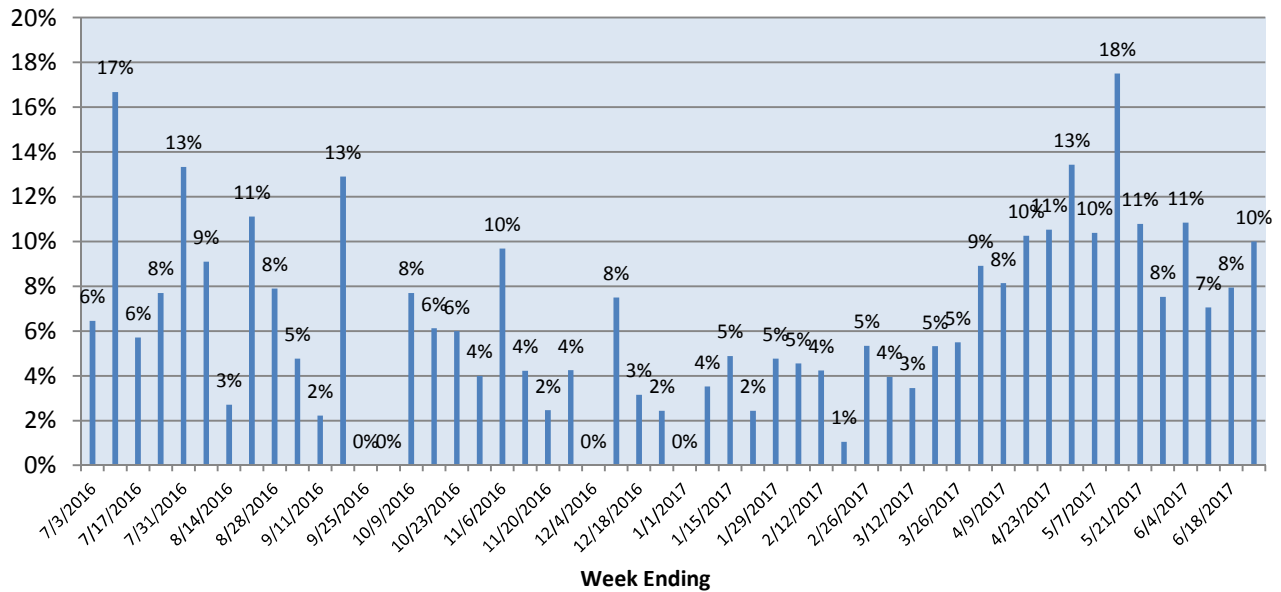


Pathogens Report

B. pertussis/parapertussis PCR



B. pertussis/parapertussis Positive Rate (%)



Enterovirus, CSF

