

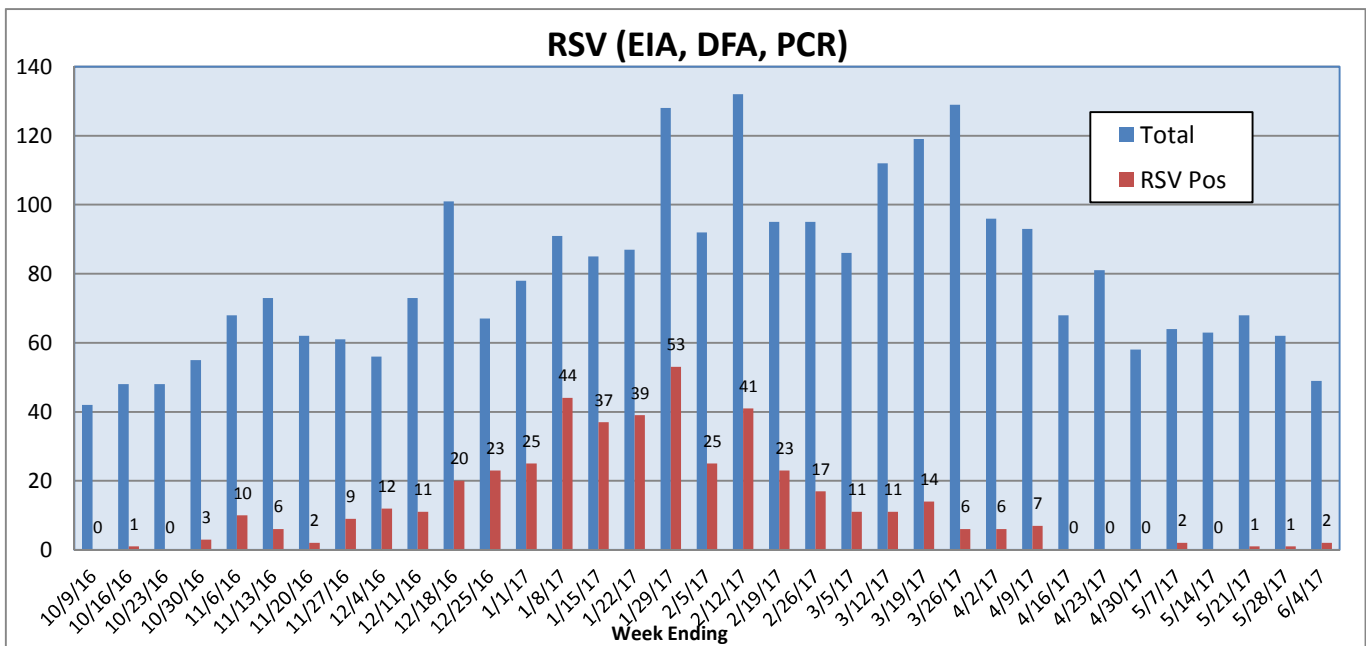
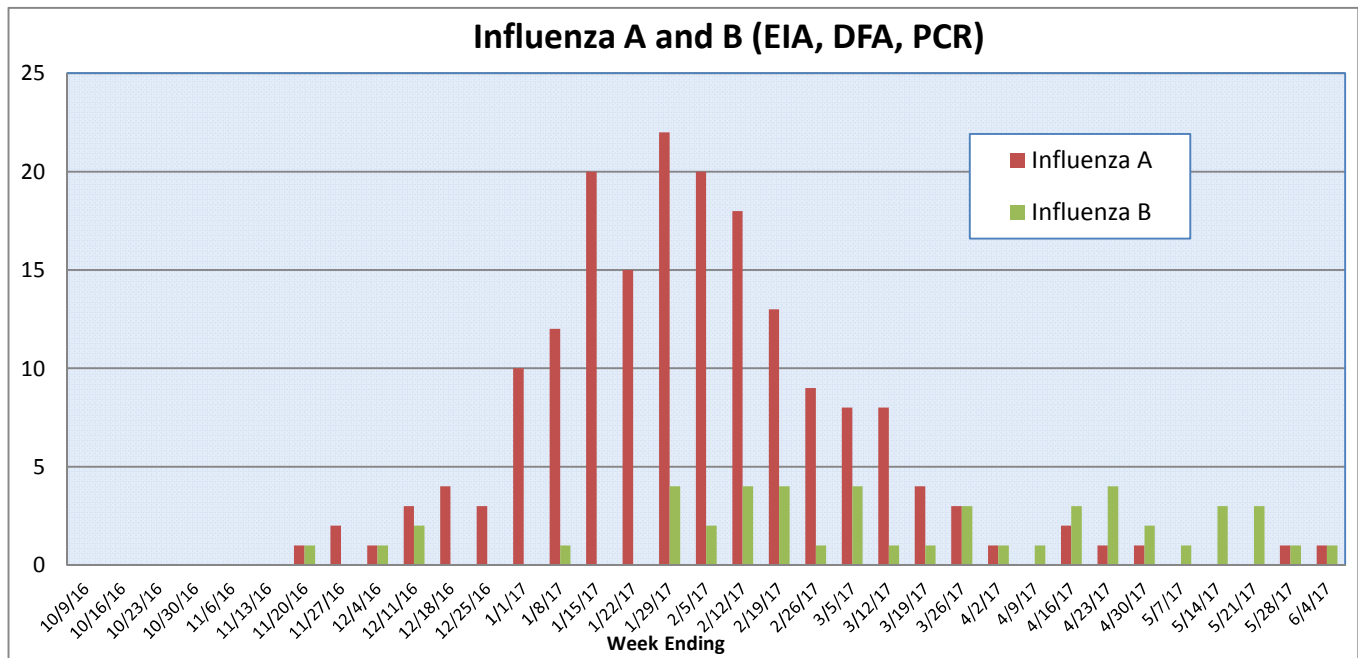
Pathogens Report

The following report is a listing of selected pathogens detected at Rady Children's Hospital Laboratory. The report includes data from adult and pediatric specimens collected locally.

May 29 -June 4, 2017

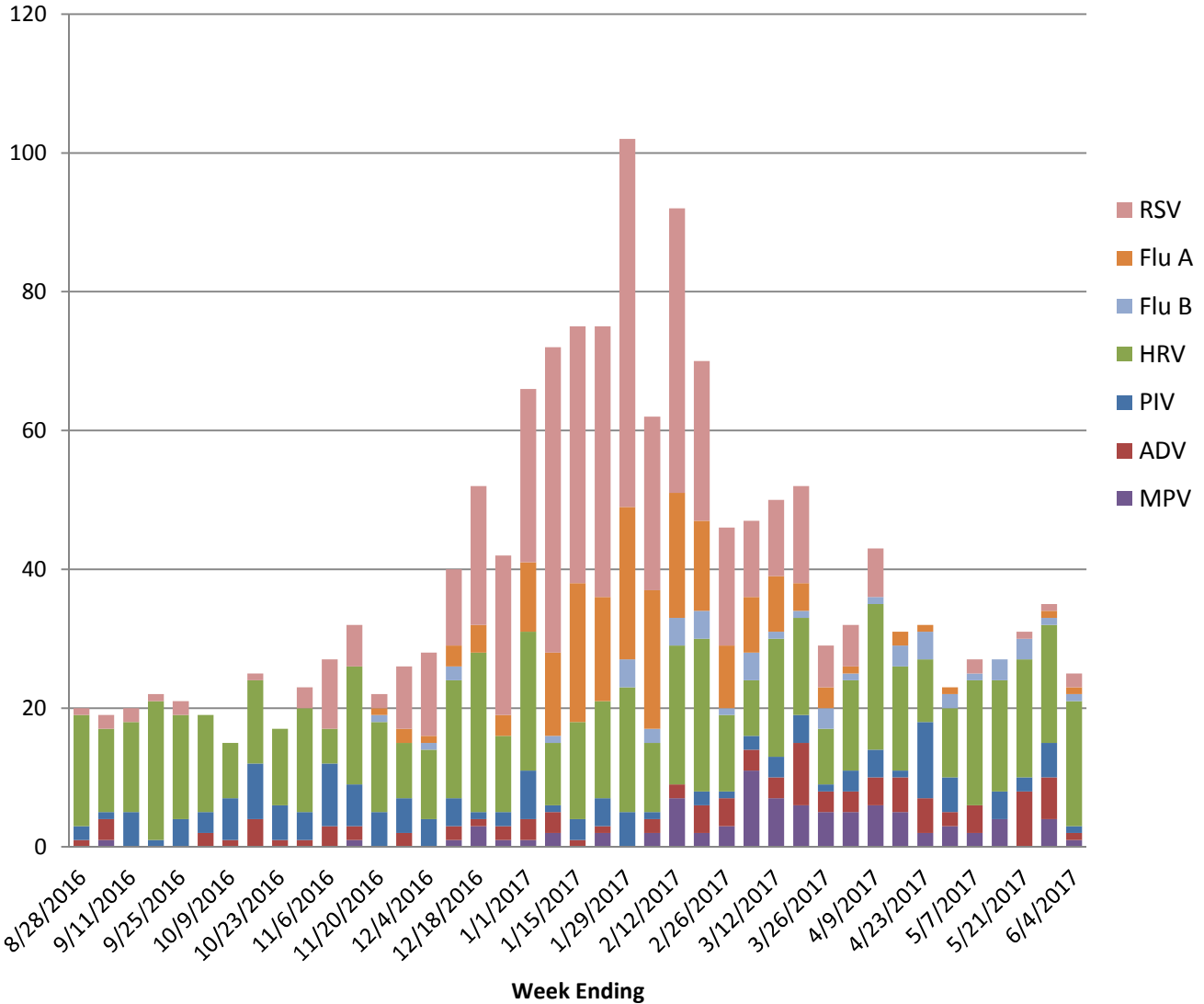
	Positive Tests Current Week	Total Tests Current Week	Positive Tests YTD*	Total Tests YTD*
RSV (DFA and PCR)	2	49	462	2785
Influenza A (EIA, DFA, and PCR)	1	61	183	4136
Influenza B (EIA, DFA, and PCR)	1	61	49	4136
Parainfluenza (PCR and DFA)	1	46	129	2581
Adenovirus (PCR and DFA)	1	46	95	2581
Rhinovirus (PCR)	18	41	489	1946
Metapneumovirus (PCR)	1	41	86	1946
B. pertussis/parapertussis (PCR)	9	83	168	2744
Enterovirus, CSF (PCR)	2	9	15	333

*From October 3, 2016.

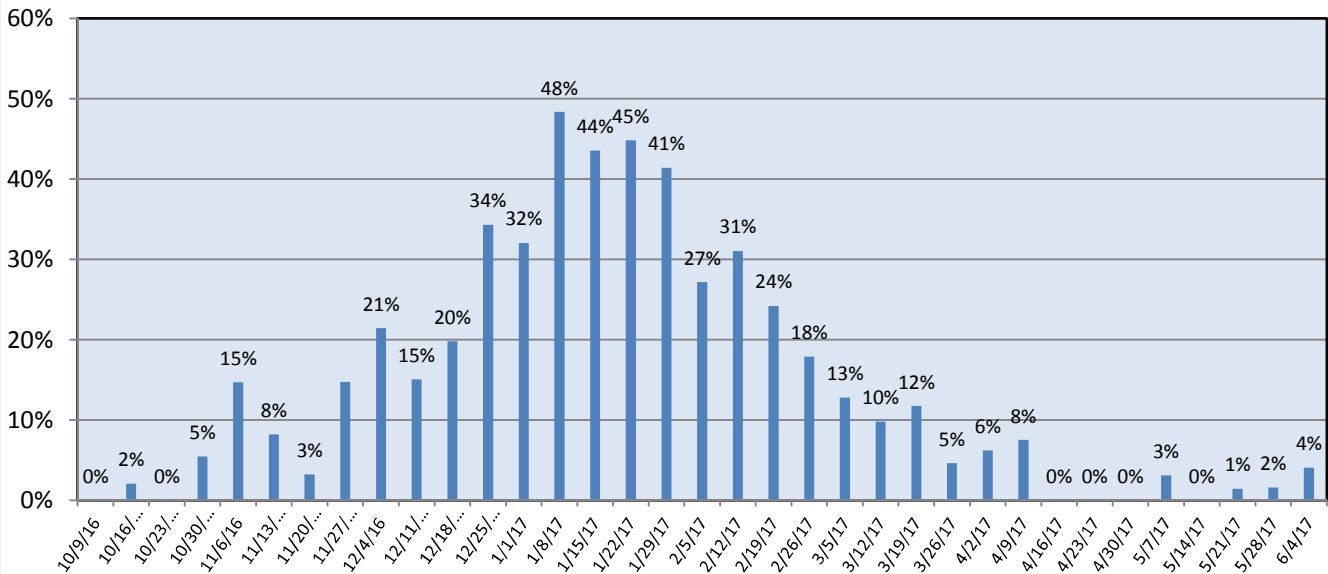


Pathogens Report

Positive Respiratory Viruses by Week

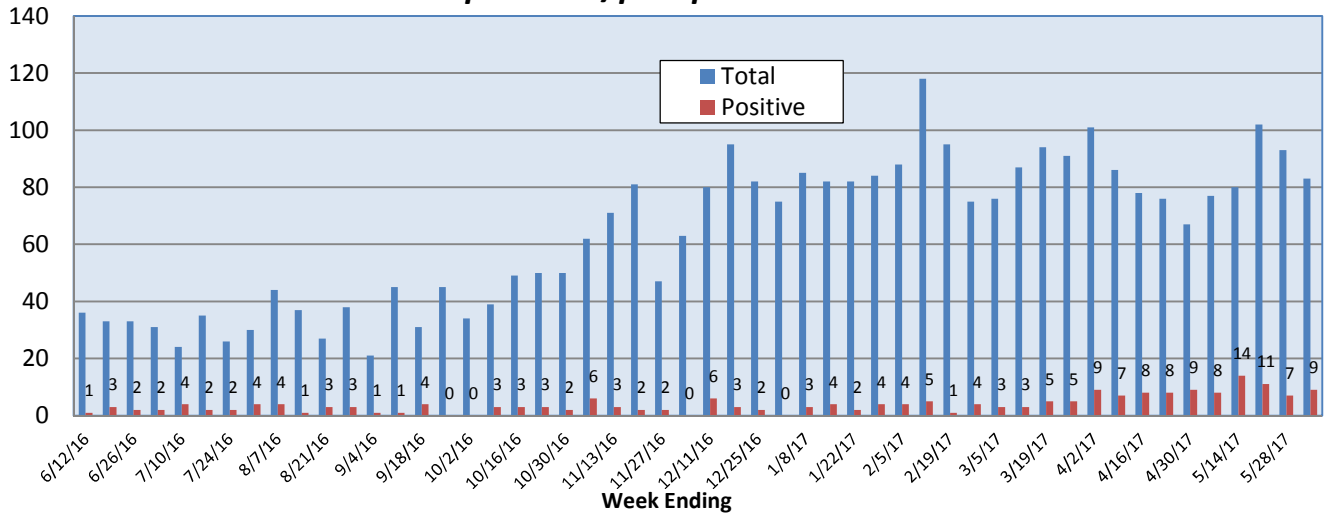


RSV Positive Rate (%)

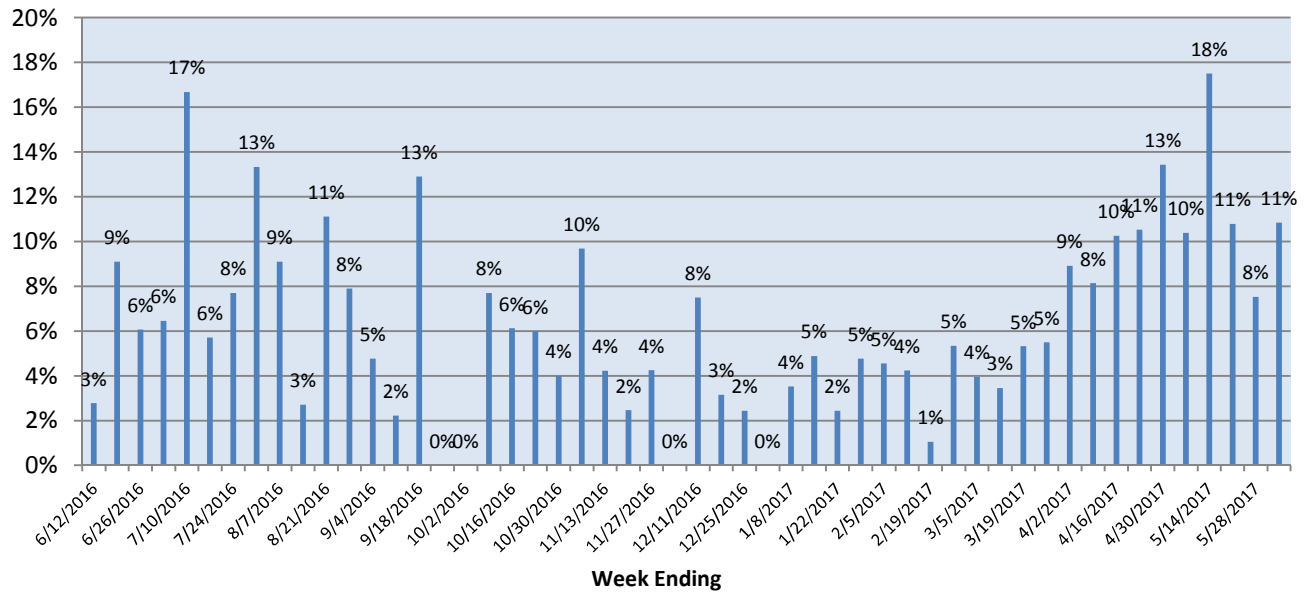


Pathogens Report

B. pertussis/parapertussis PCR



B. pertussis/parapertussis Positive Rate (%)



Enterovirus, CSF

