

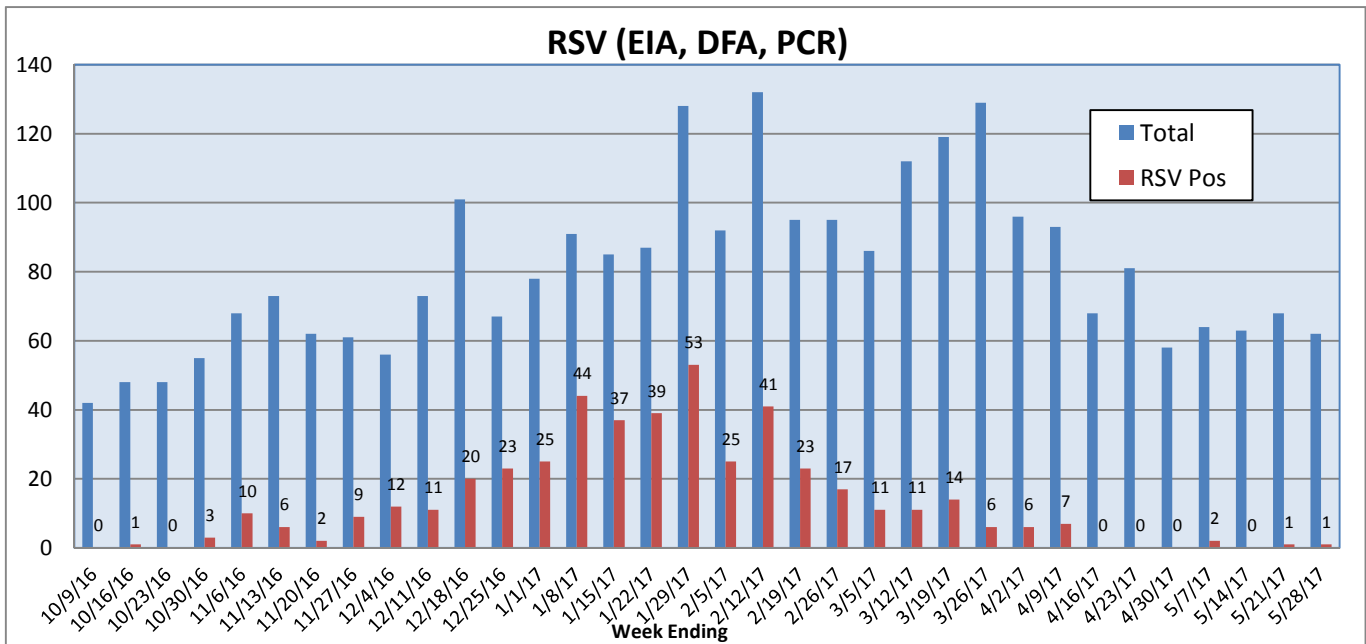
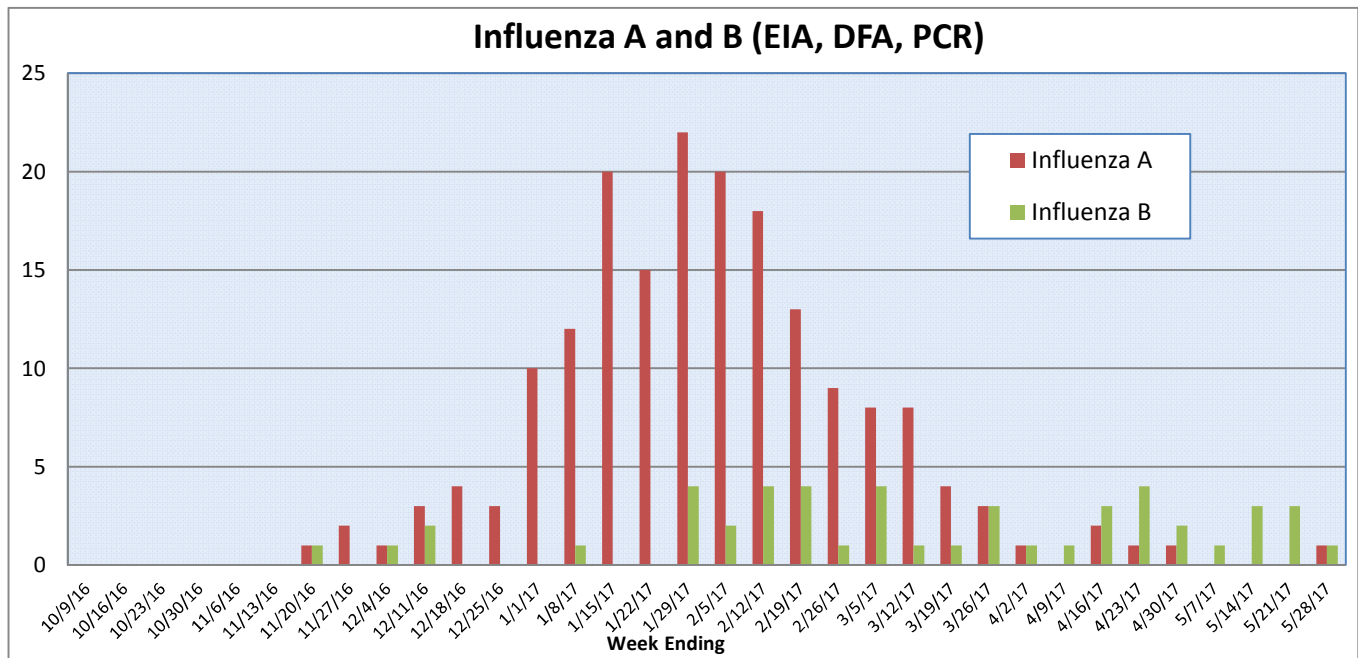
Pathogens Report

The following report is a listing of selected pathogens detected at Rady Children's Hospital Laboratory. The report includes data from adult and pediatric specimens collected locally.

May 22-28, 2017

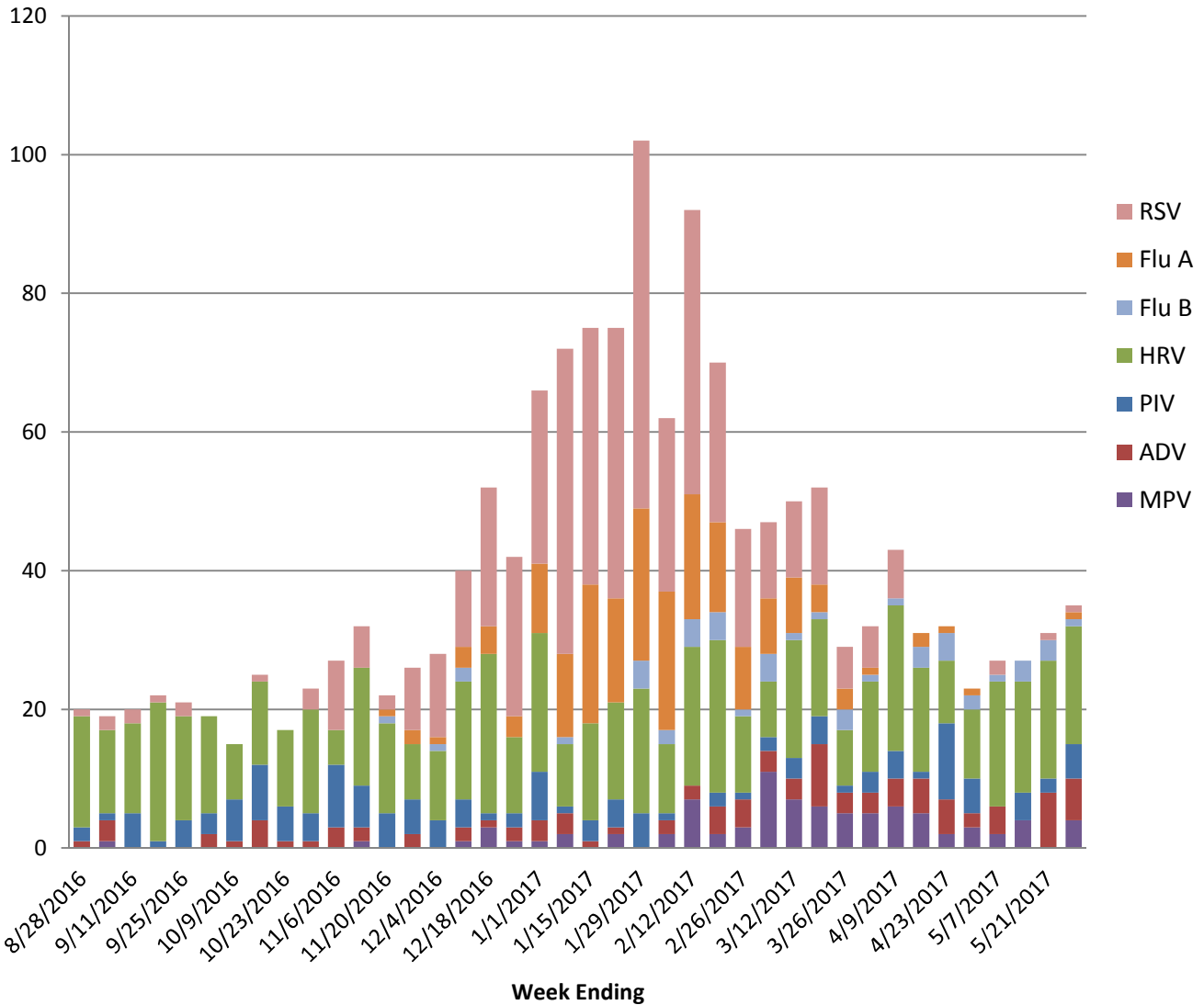
	Positive Tests Current Week	Total Tests Current Week	Positive Tests YTD*	Total Tests YTD*
RSV (DFA and PCR)	1	62	460	2674
Influenza A (EIA, DFA, and PCR)	1	64	182	4011
Influenza B (EIA, DFA, and PCR)	1	64	48	4011
Parainfluenza (PCR and DFA)	5	62	128	2473
Adenovirus (PCR and DFA)	6	62	94	2473
Rhinovirus (PCR)	17	51	471	1854
Metapneumovirus (PCR)	4	51	85	1854
B. pertussis/parapertussis (PCR)	7	93	159	2661
Enterovirus, CSF (PCR)	0	7	13	324

*From October 3, 2016.

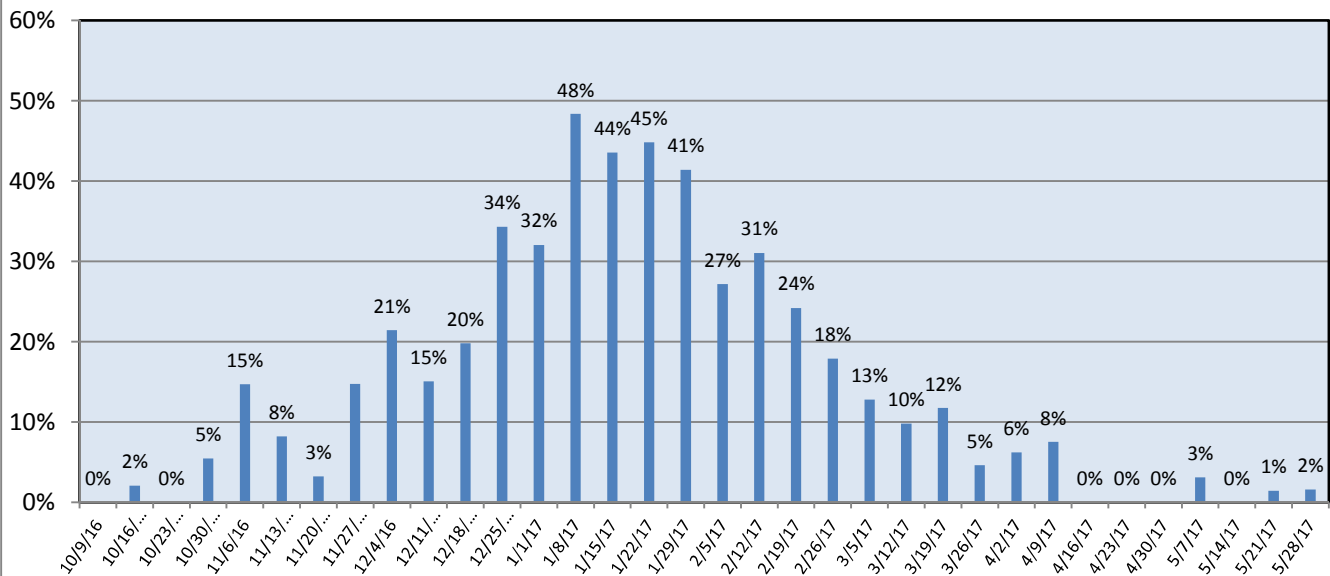


Pathogens Report

Positive Respiratory Viruses by Week

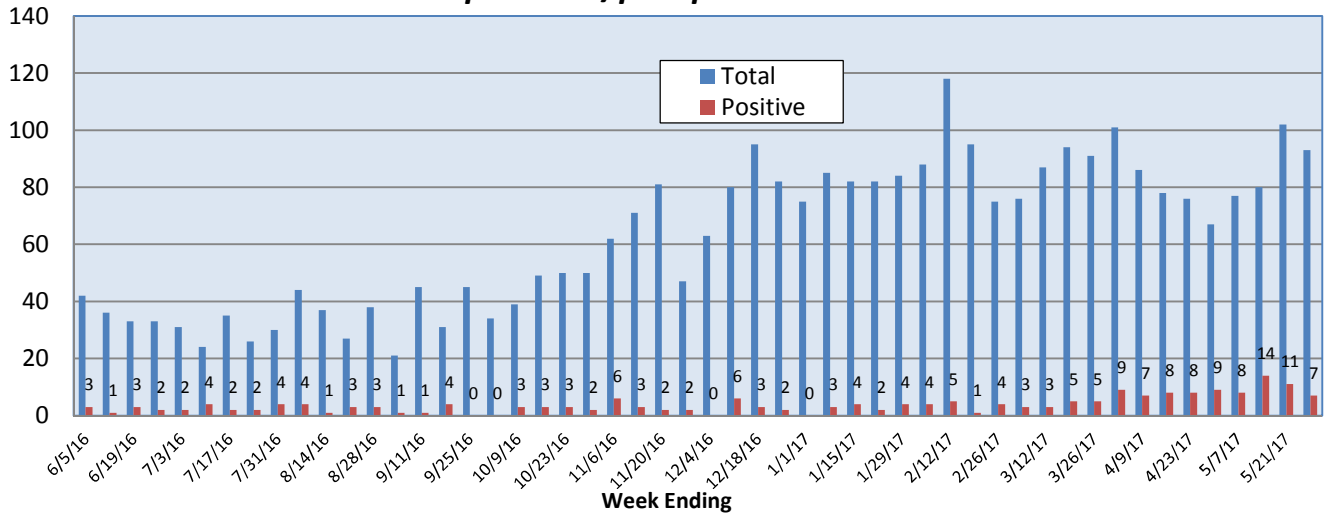


RSV Positive Rate (%)

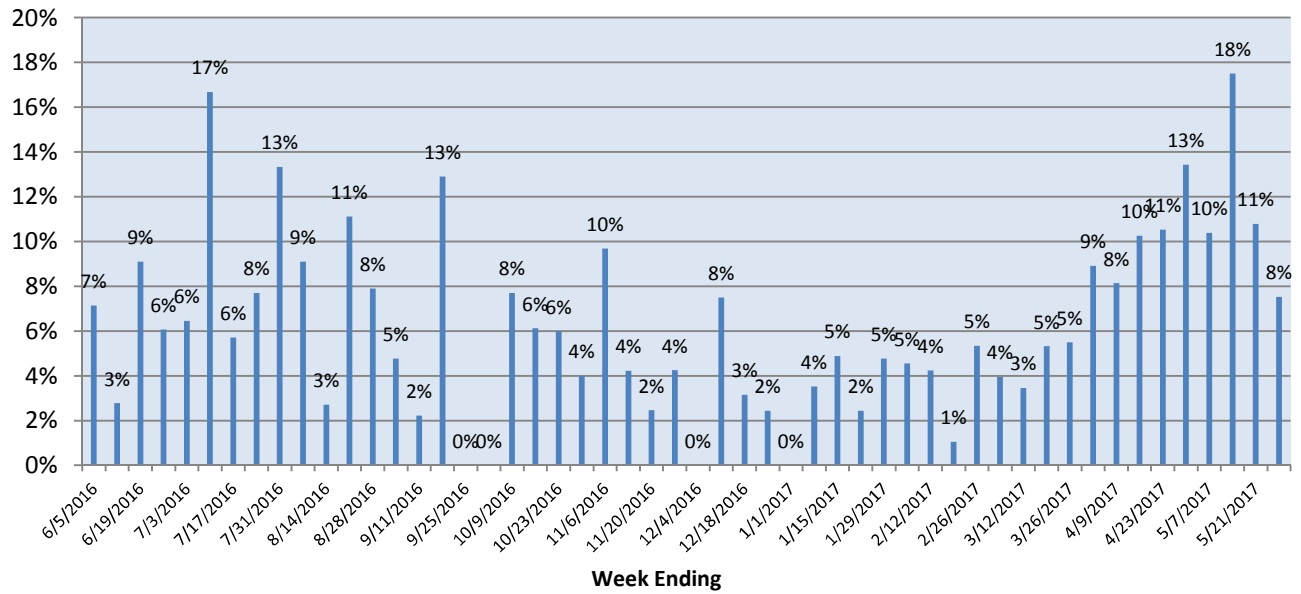


Pathogens Report

B. pertussis/parapertussis PCR



B. pertussis/parapertussis Positive Rate (%)



Enterovirus, CSF

