

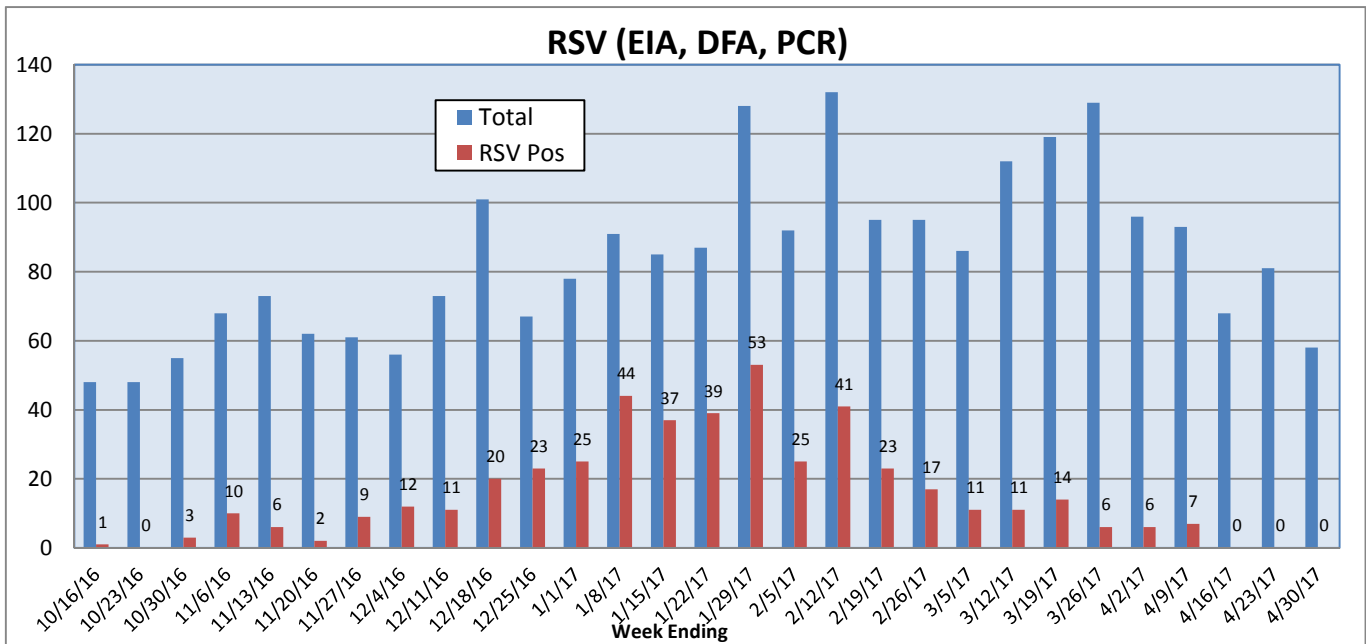
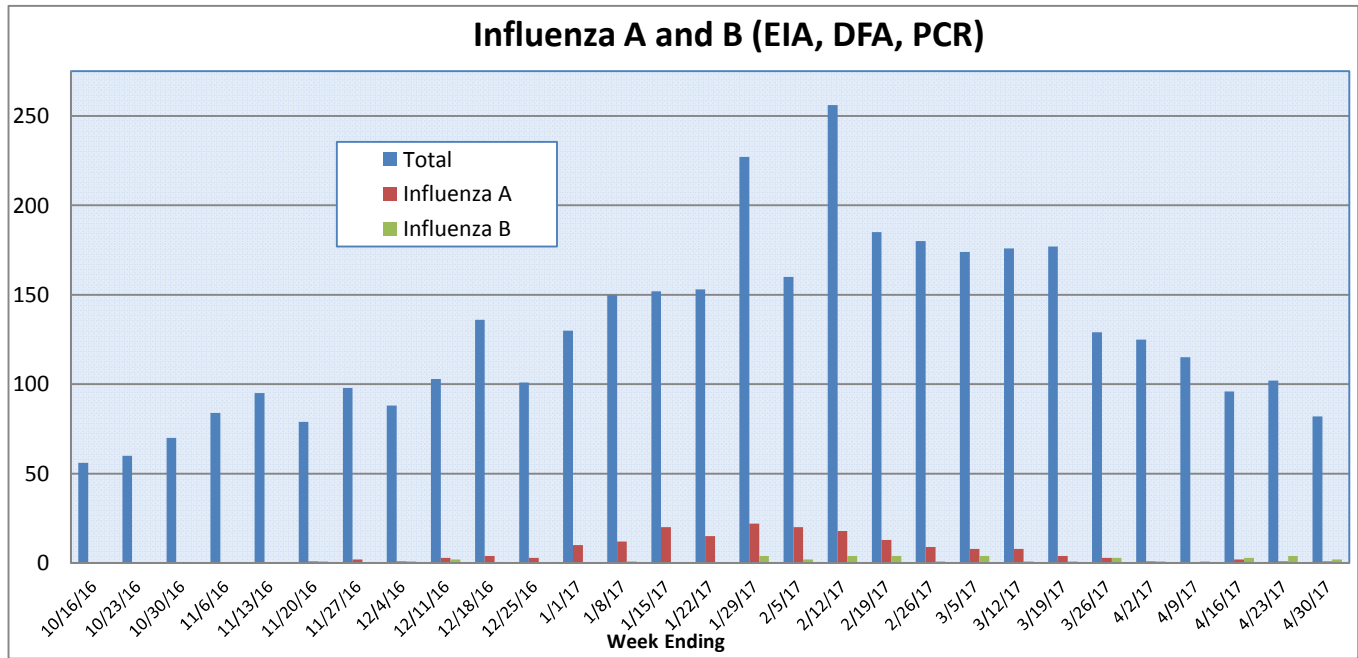
Pathogens Report

The following report is a listing of selected pathogens detected at Rady Children's Hospital Laboratory. The report includes data from adult and pediatric specimens collected locally.

April 24-30, 2017

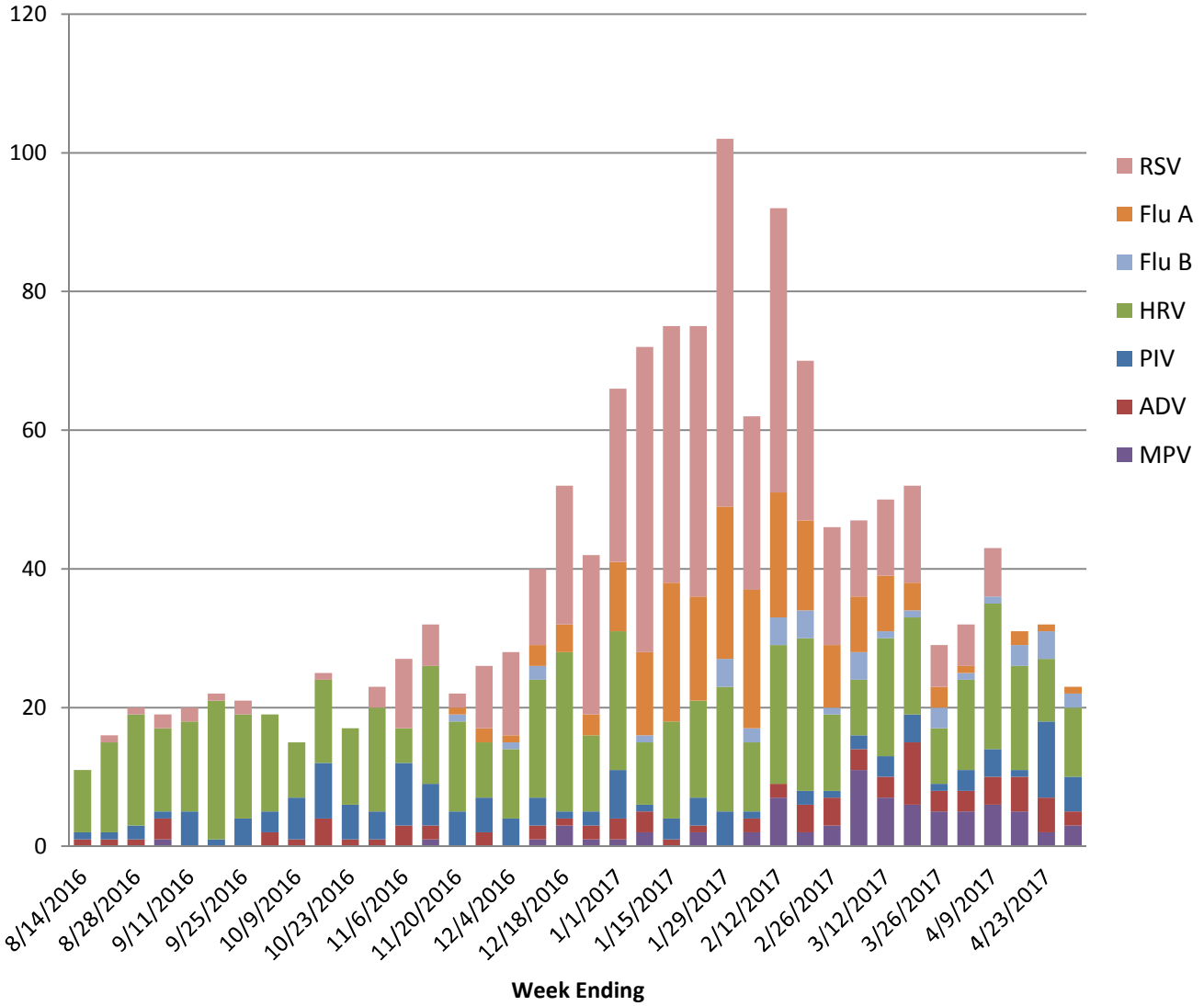
	Positive Tests Current Week	Total Tests Current Week	Positive Tests YTD*	Total Tests YTD*
RSV (DFA and PCR)	0	58	456	2479
Influenza A (EIA, DFA, and PCR)	1	82	181	3784
Influenza B (EIA, DFA, and PCR)	2	82	40	3784
Parainfluenza (PCR and DFA)	5	54	117	2289
Adenovirus (PCR and DFA)	2	54	76	2289
Rhinovirus (PCR)	10	40	403	1713
Metapneumovirus (PCR)	3	40	75	1713
B. pertussis/parapertussis (PCR)	9	67	119	2309
Enterovirus, CSF (PCR)	0	9	11	288

*From October 3, 2016.

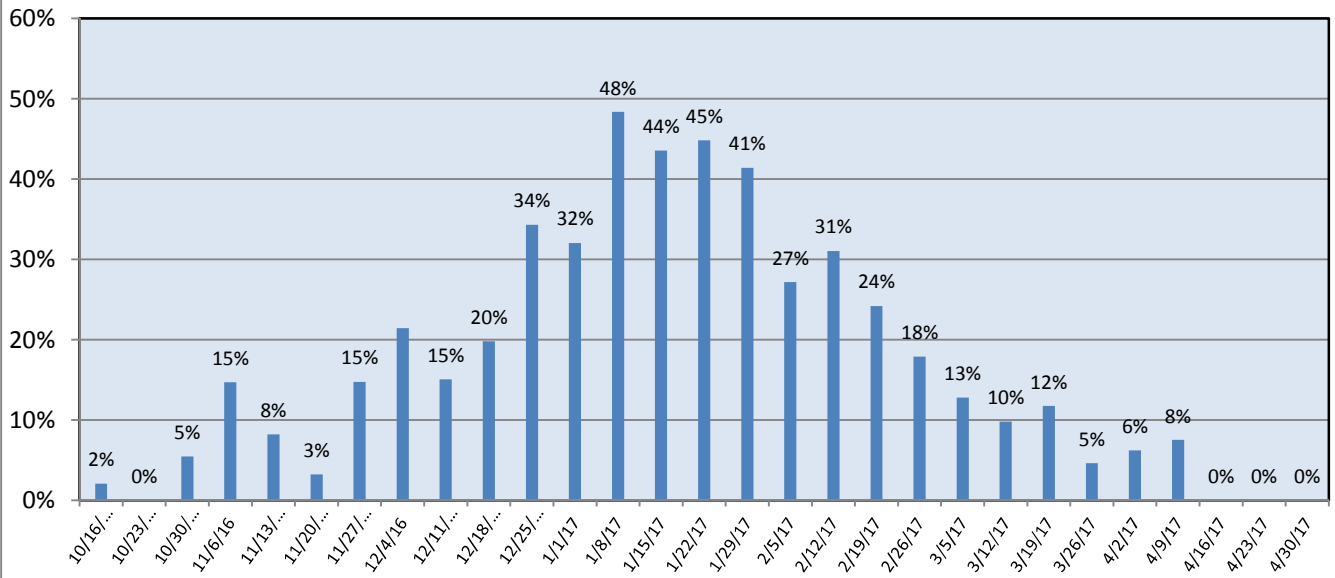


Pathogens Report

Positive Respiratory Viruses by Week

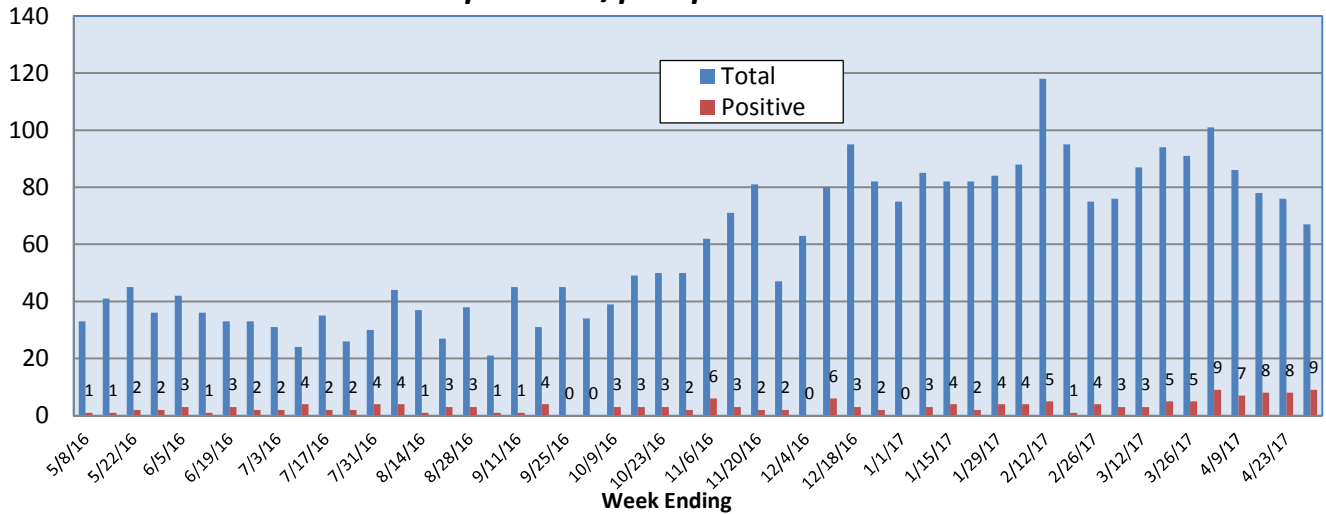


RSV Positive Rate (%)

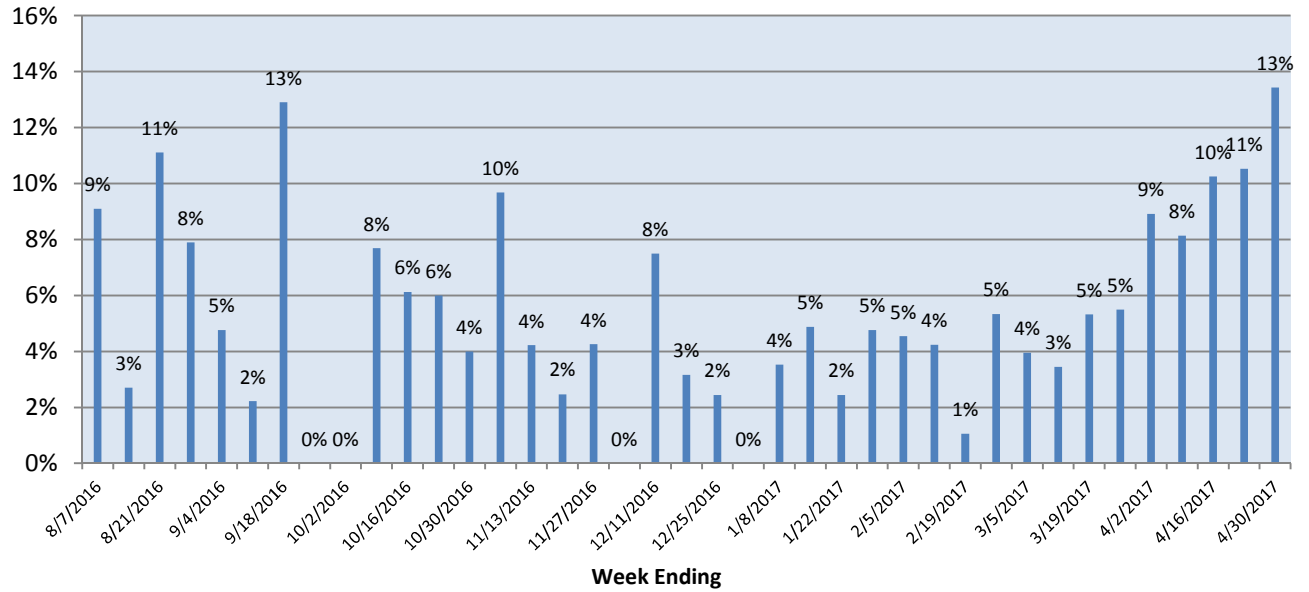


Pathogens Report

B. pertussis/parapertussis PCR



B. pertussis/parapertussis Positive Rate (%)



Enterovirus, CSF