

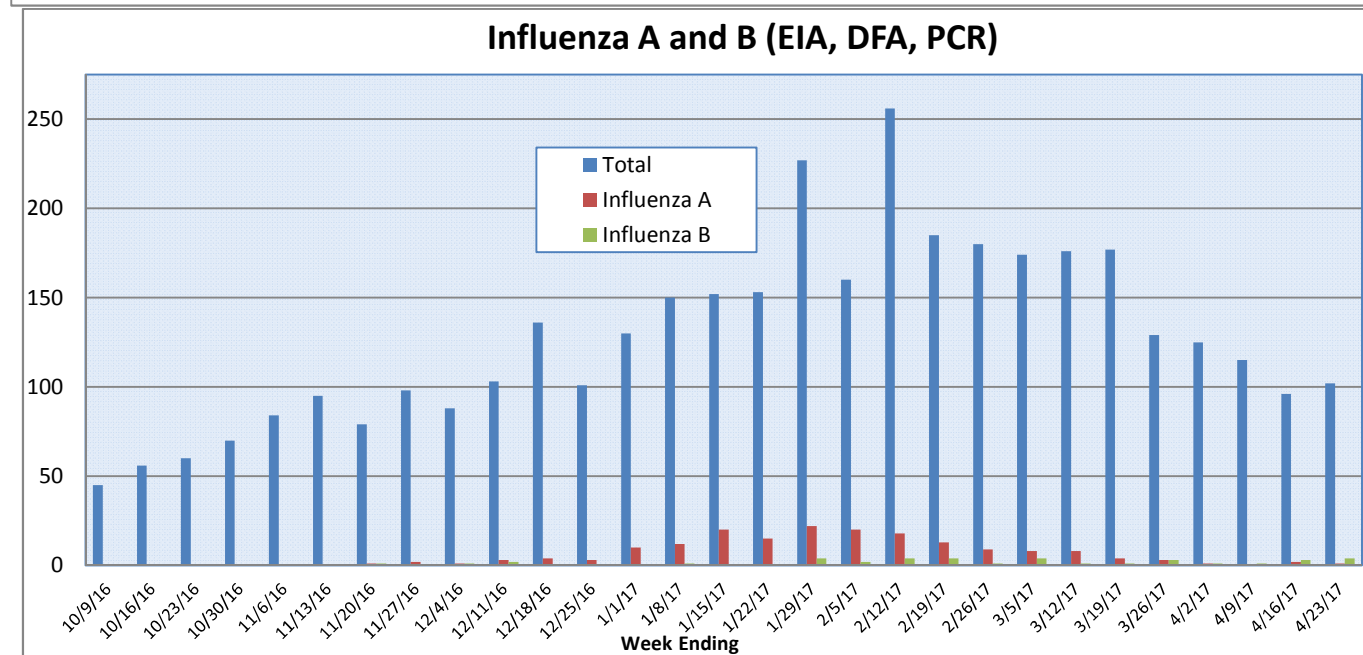
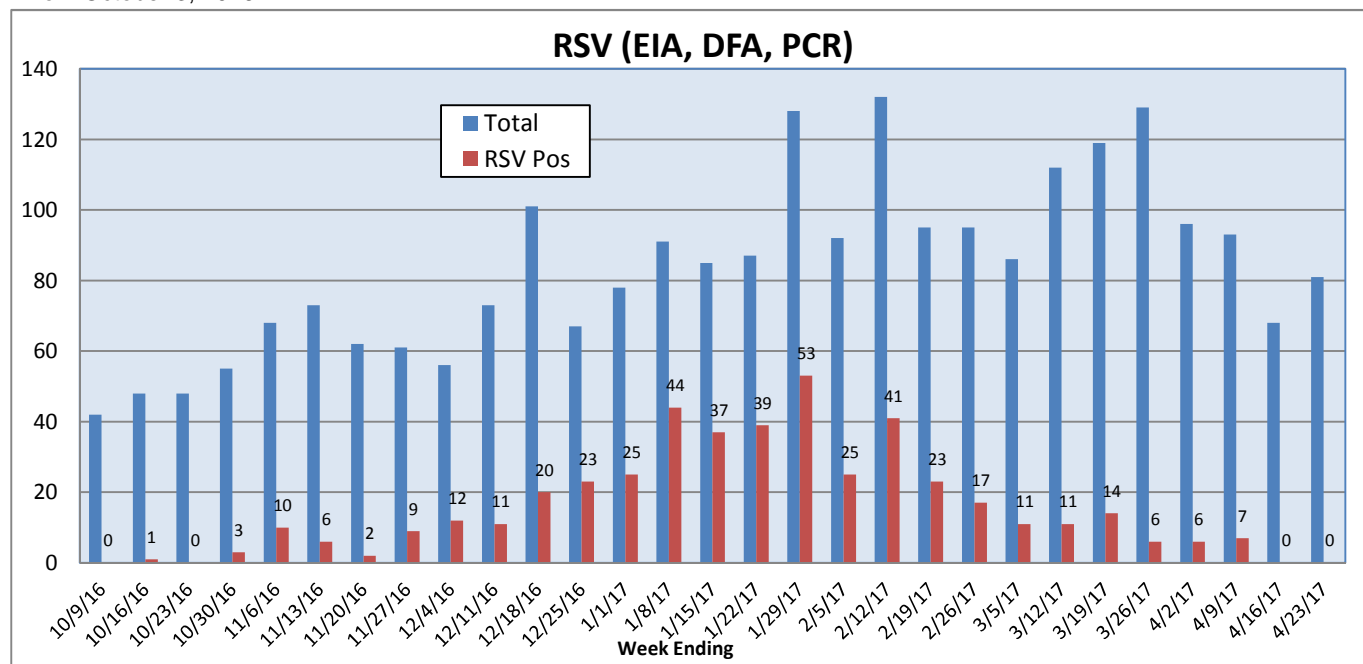
## Pathogens Report

The following report is a listing of selected pathogens detected at Rady Children's Hospital Laboratory. The report includes data from adult and pediatric specimens collected locally.

**April 17-23, 2017**

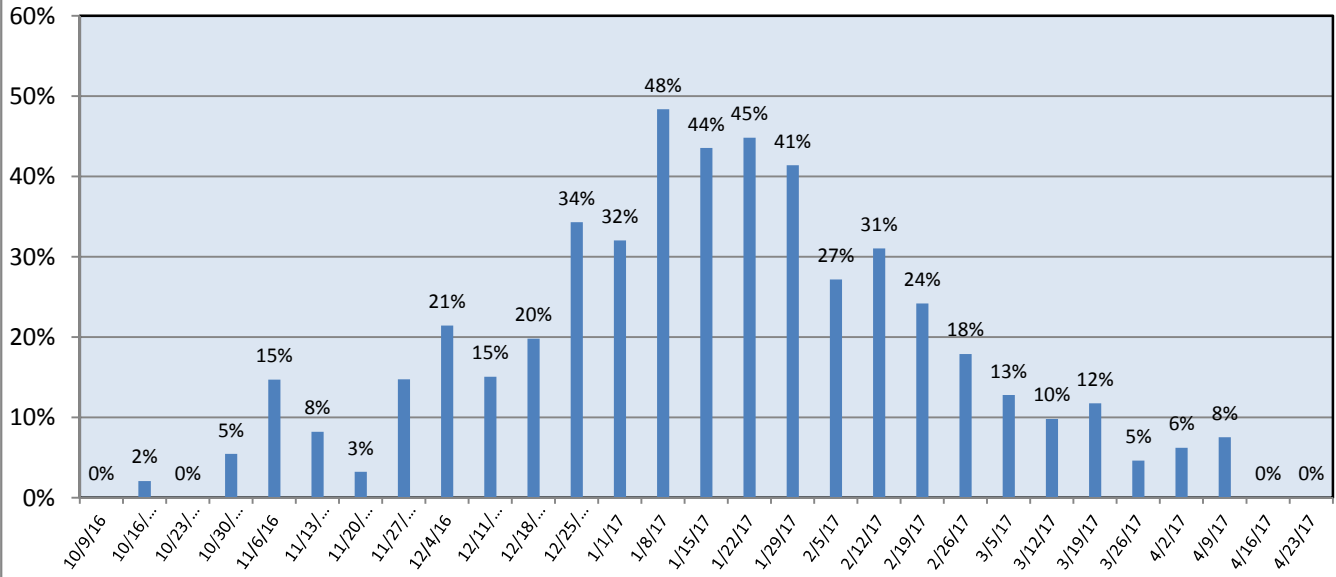
	Positive Tests Current Week	Total Tests Current Week	Positive Tests YTD*	Total Tests YTD*
<b>RSV (DFA and PCR)</b>	0	81	456	2421
<b>Influenza A (EIA, DFA, and PCR)</b>	1	102	180	3702
<b>Influenza B (EIA, DFA, and PCR)</b>	4	102	38	3702
<b>Parainfluenza (PCR and DFA)</b>	8	59	112	2235
<b>Adenovirus (PCR and DFA)</b>	5	59	74	2235
<b>Rhinovirus (PCR)</b>	9	46	393	1673
<b>Metapneumovirus (PCR)</b>	2	46	72	1673
<b>B. pertussis/parapertussis (PCR)</b>	8	76	110	2242
<b>Enterovirus, CSF (PCR)</b>	0	5	11	279

\*From October 3, 2016.

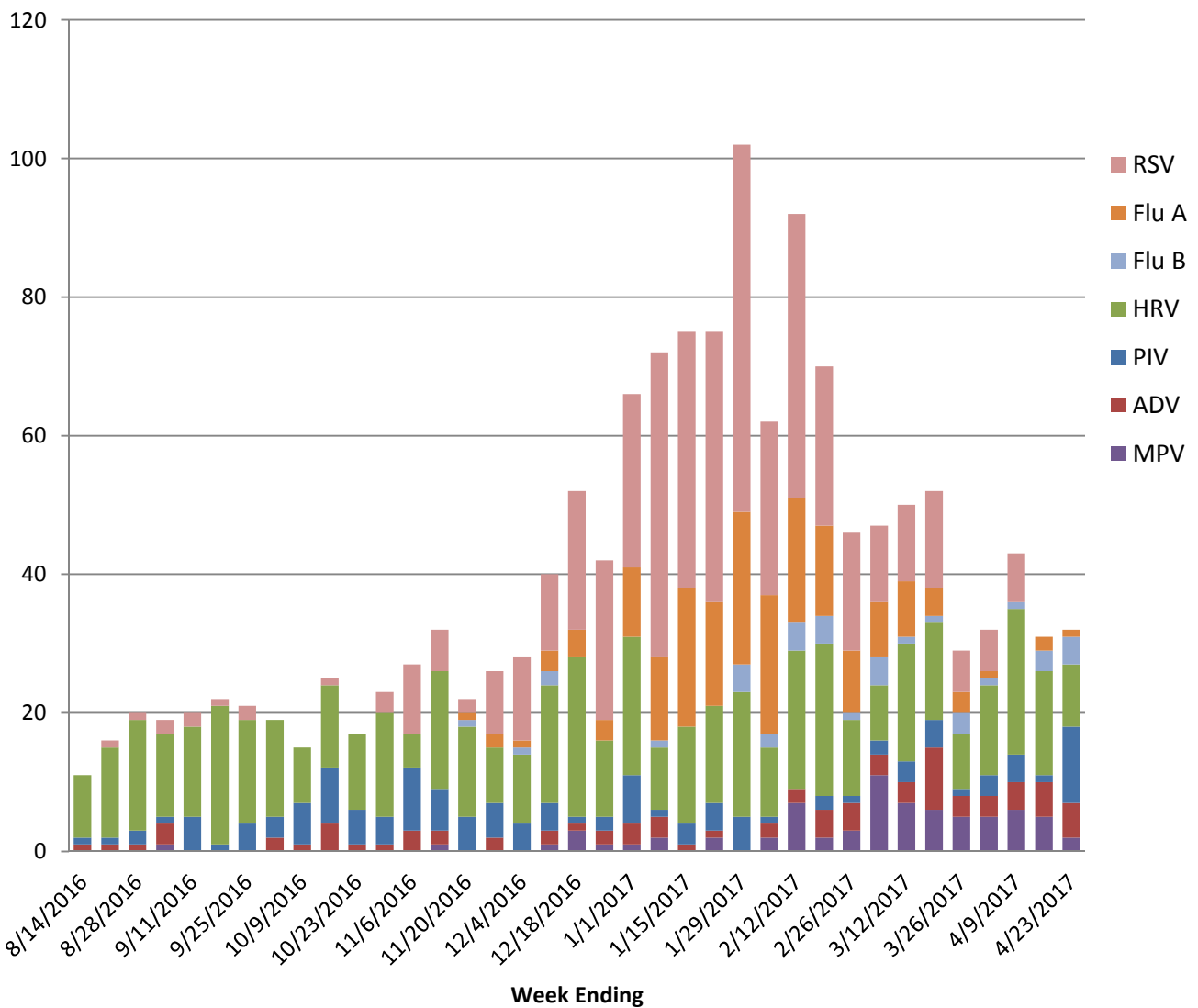


# Pathogens Report

## RSV Positive Rate (%)

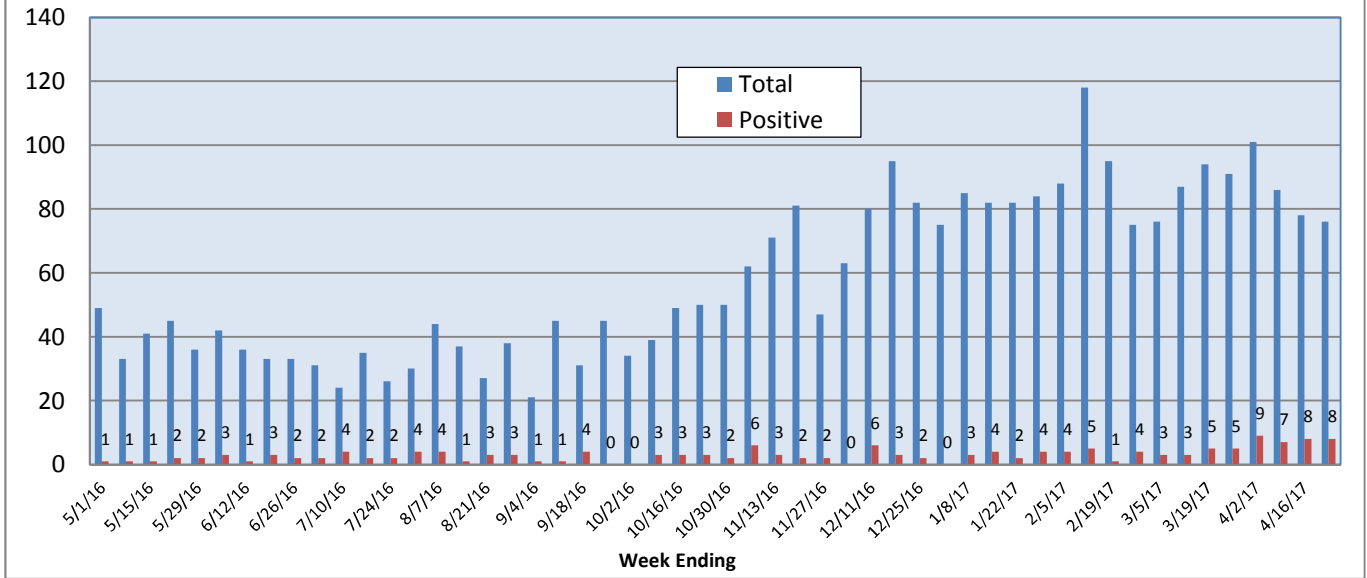


## Positive Respiratory Viruses by Week



# Pathogens Report

## B. pertussis/parapertussis PCR



## Enterovirus, CSF

