

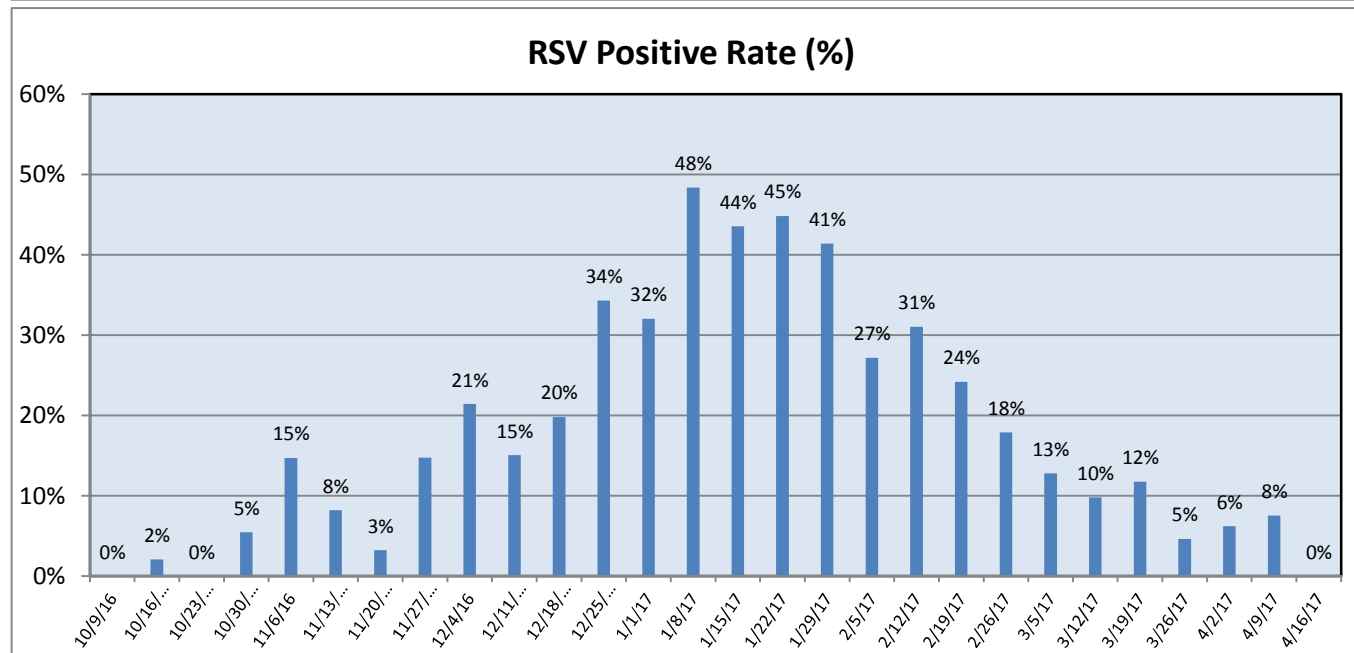
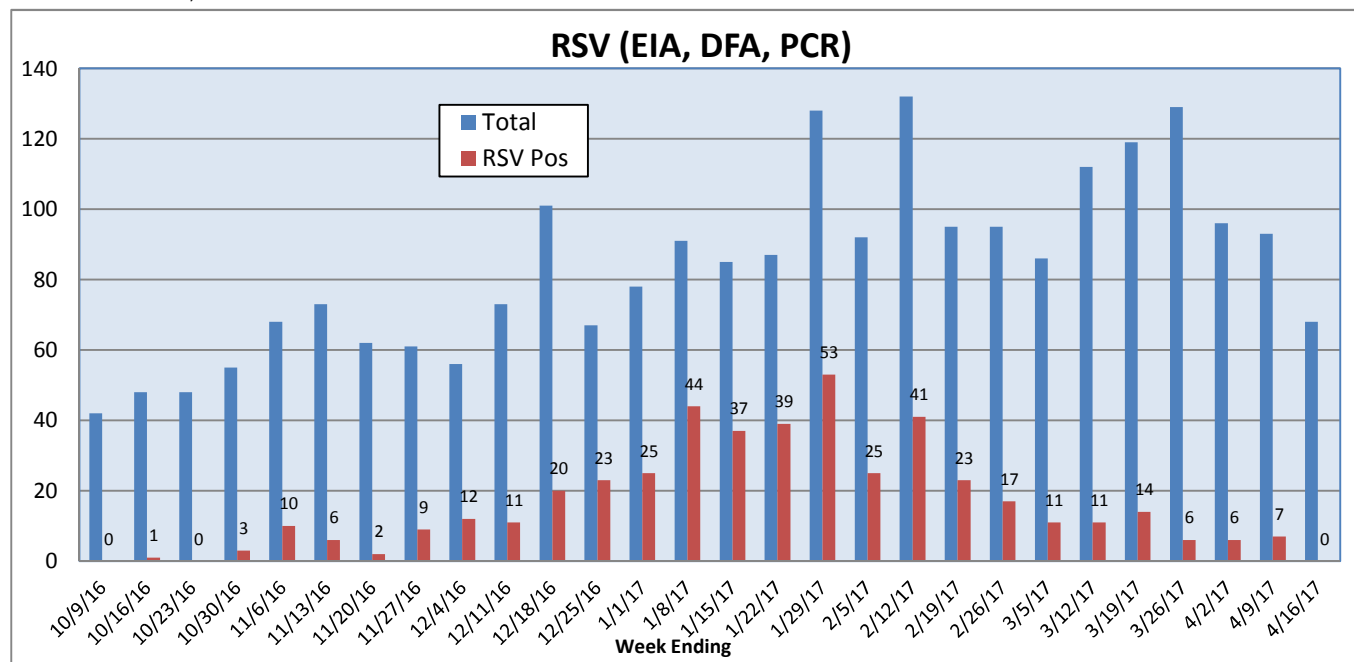
## Pathogens Report

The following report is a listing of selected pathogens detected at Rady Children's Hospital Laboratory. The report includes data from adult and pediatric specimens collected locally.

April 10-16, 2017

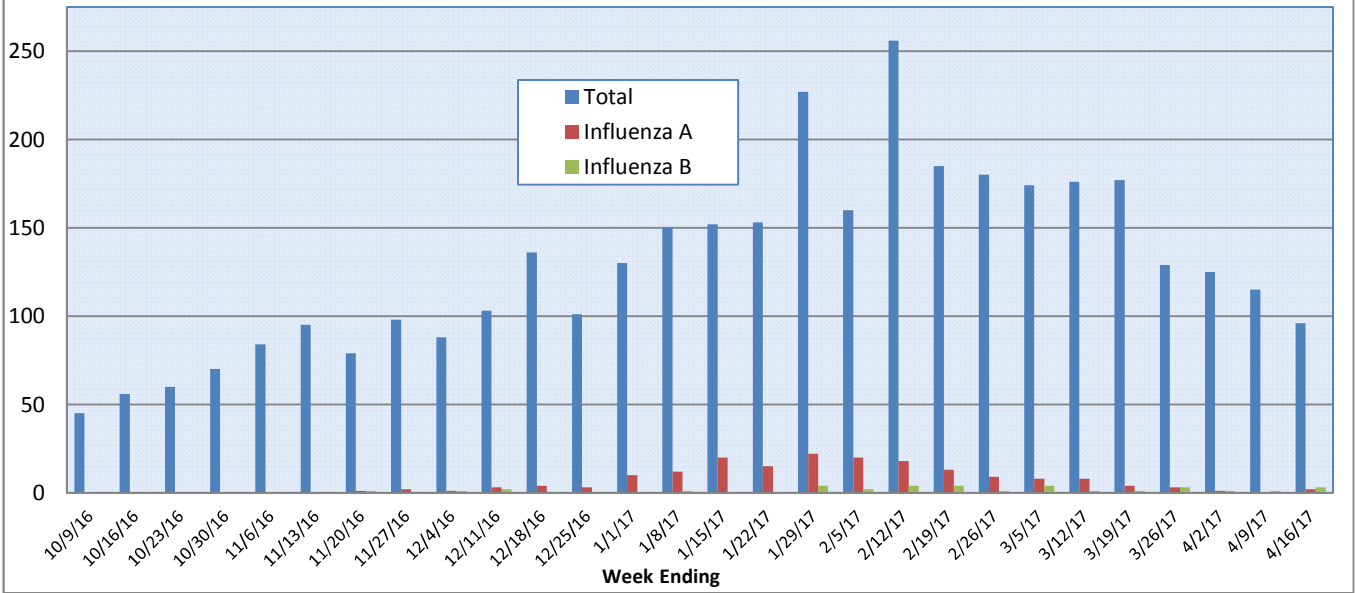
	Positive Tests Current Week	Total Tests Current Week	Positive Tests YTD*	Total Tests YTD*
<b>RSV (DFA and PCR)</b>	0	68	456	2340
<b>Influenza A (EIA, DFA, and PCR)</b>	2	96	179	3600
<b>Influenza B (EIA, DFA, and PCR)</b>	3	96	34	3600
<b>Parainfluenza (PCR and DFA)</b>	1	61	101	2176
<b>Adenovirus (PCR and DFA)</b>	5	61	69	2176
<b>Rhinovirus (PCR)</b>	15	51	384	1627
<b>Metapneumovirus (PCR)</b>	5	51	70	1627
<b>B. pertussis/parapertussis (PCR)</b>	8	78	102	2166
<b>Enterovirus, CSF (PCR)</b>	0	6	11	274

\*From October 3, 2016.

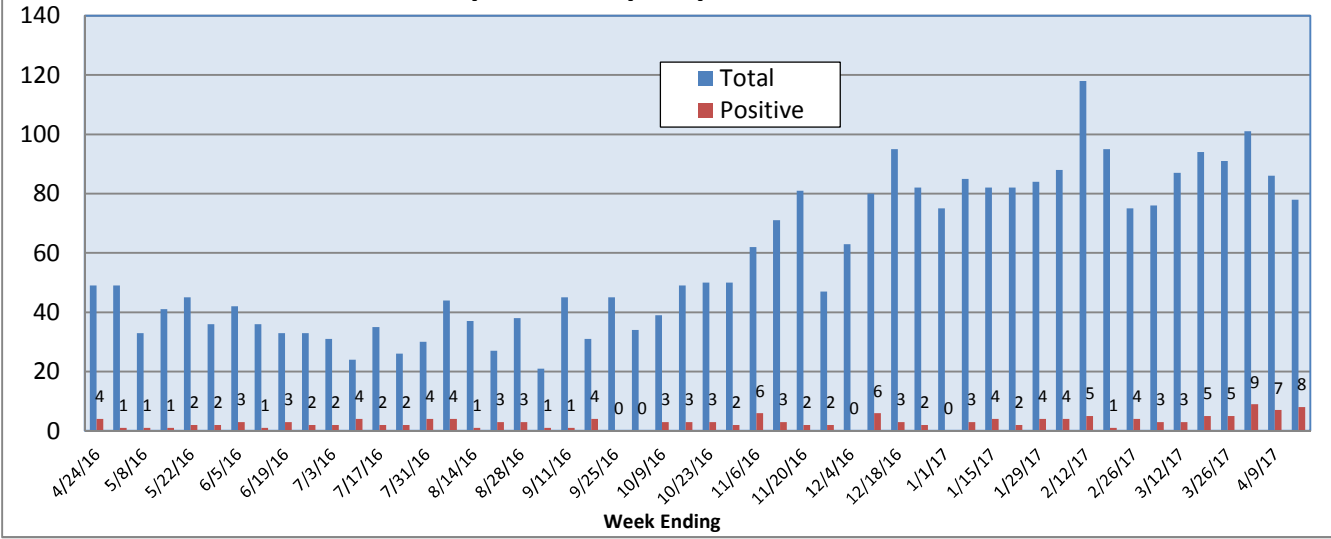


# Pathogens Report

## Influenza A and B (EIA, DFA, PCR)



## B. pertussis/parapertussis PCR



## Enterovirus, CSF

