

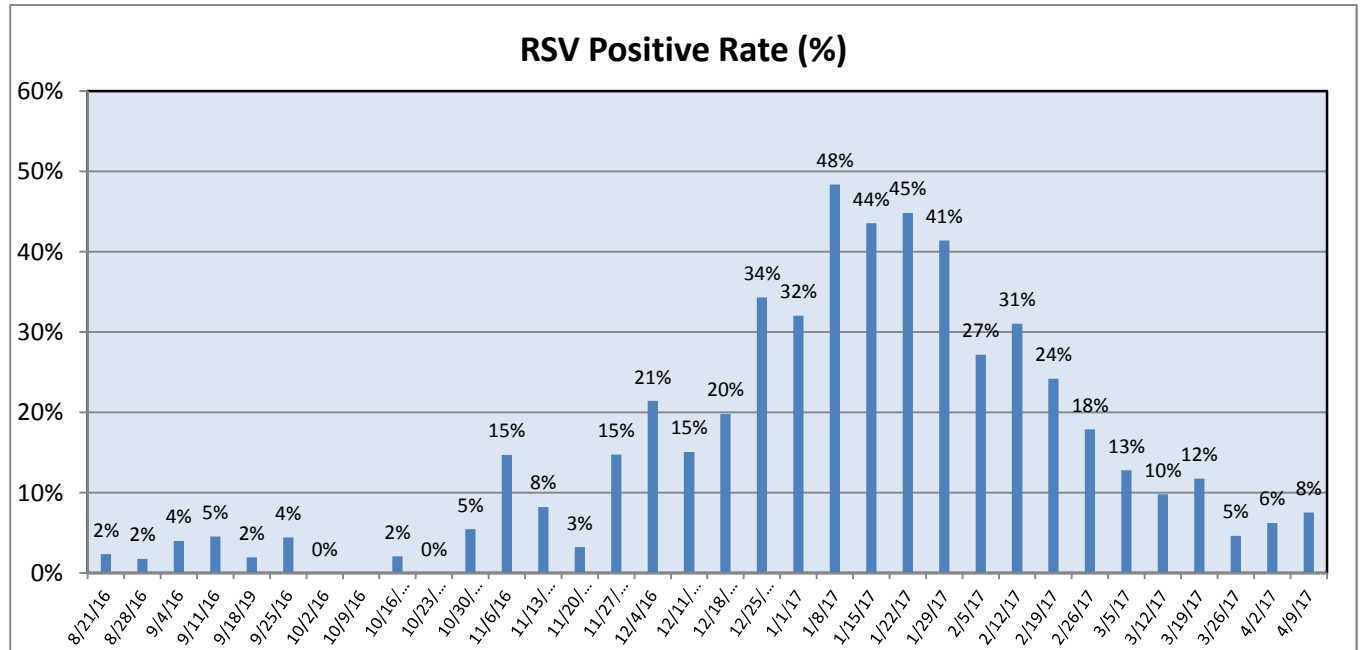
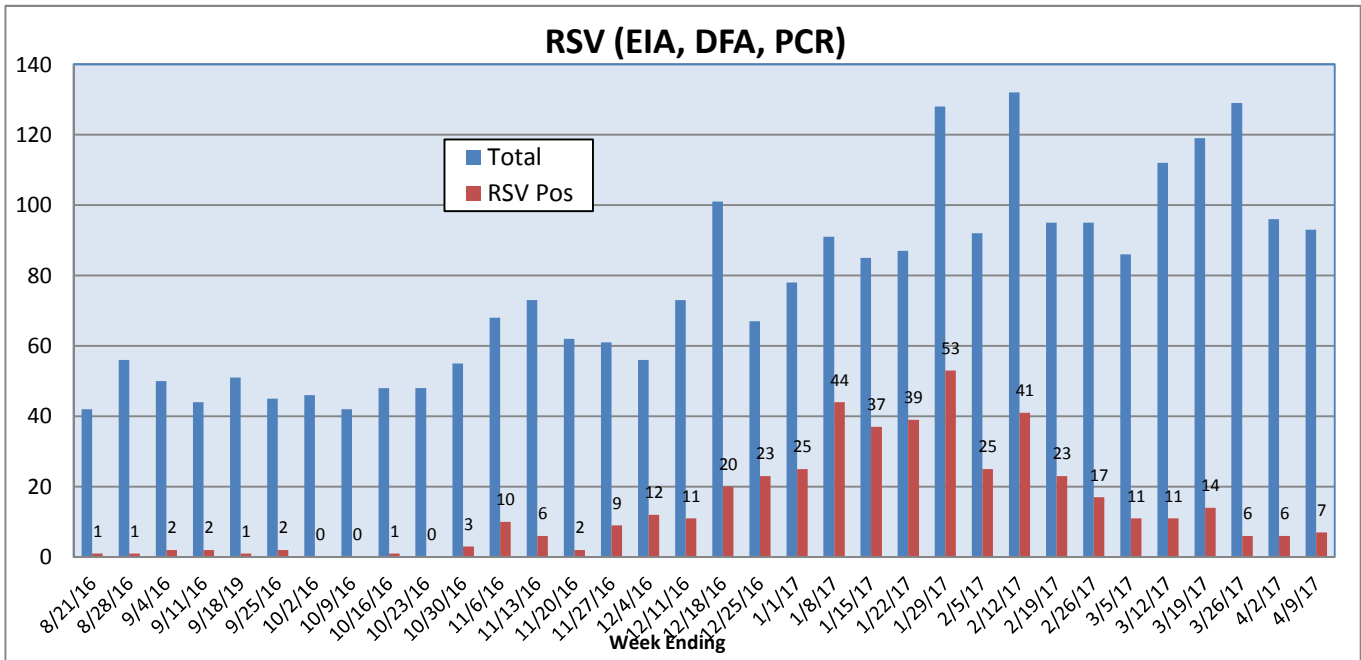
Pathogens Report

The following report is a listing of selected pathogens detected at Rady Children's Hospital Laboratory. The report includes data from adult and pediatric specimens collected locally.

April 3-9, 2017

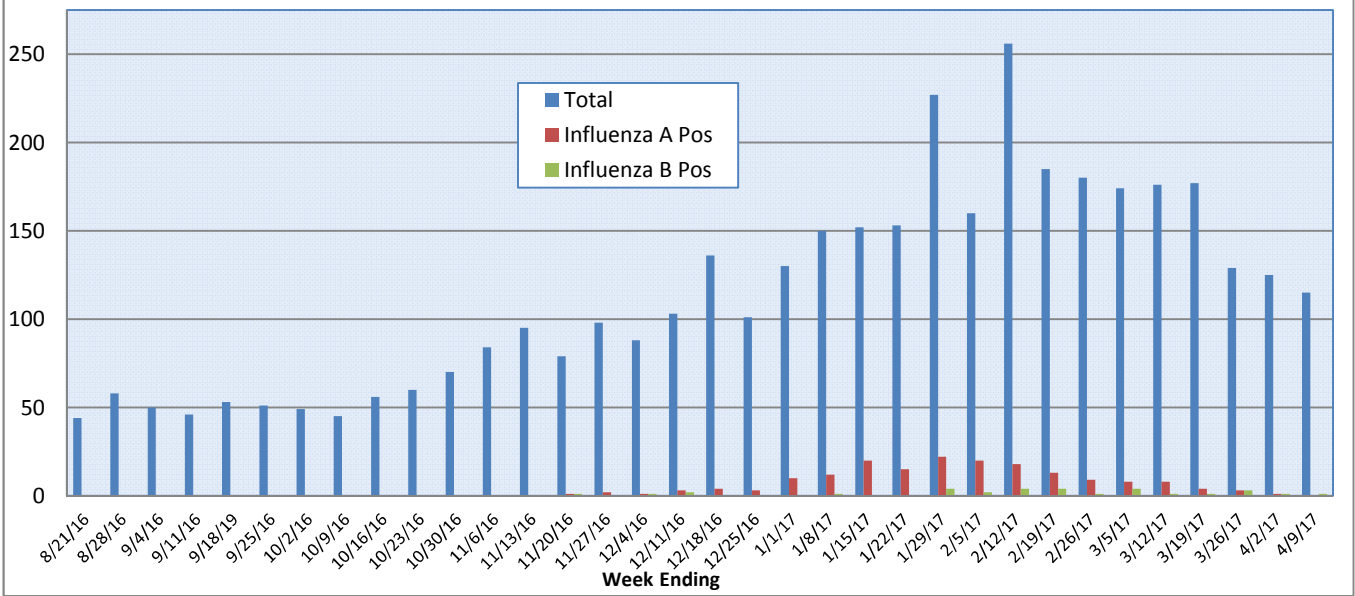
	Positive Tests Current Week	Total Tests Current Week	Positive Tests YTD*	Total Tests YTD*
RSV (DFA and PCR)	7	93	456	2272
Influenza A (EIA, DFA, and PCR)	0	115	177	3504
Influenza B (EIA, DFA, and PCR)	1	115	31	3504
Parainfluenza (PCR and DFA)	4	85	96	2115
Adenovirus (PCR and DFA)	4	85	60	2115
Rhinovirus (PCR)	21	59	348	1576
Metapneumovirus (PCR)	6	59	59	1576
B. pertussis/parapertussis (PCR)	7	86	94	2088
Enterovirus, CSF (PCR)	0	12	11	268

*From October 3, 2016.

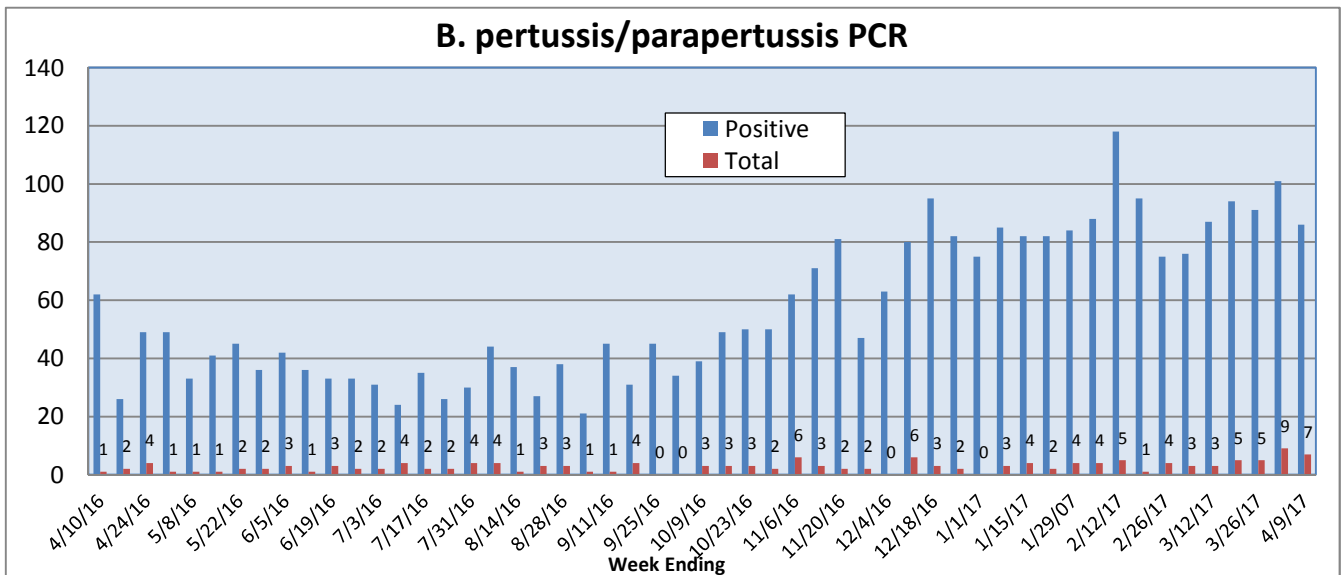


Pathogens Report

Influenza A and B (EIA, DFA, PCR)



B. pertussis/parapertussis PCR



Enterovirus, CSF

