



INFLUENZA WATCH

The purpose of the weekly *Influenza Watch* is to summarize current influenza surveillance in San Diego County. **Please note that reported weekly data are preliminary and may change due to delayed submissions and additional laboratory results.**

Report Contents
 Page 1: Overview & Indicators
 Page 2: Virus Characteristics
 Pages 3-7: Trend graphs
 Page 7: Reporting Information

Current Week

Current Week 14 (ending 4/8/2017)

- 88 new influenza detections reported: *Expected level*
- 2% influenza-like-illness (ILI) among emergency department visits: *Expected level*
- 2 influenza-related deaths reported this week
- 7% of deaths registered with pneumonia and/or influenza: *Expected level*

Current Season Summary

5,295
Total Cases

104
ICU Cases

82
Deaths

34
Outbreaks

Virus Characteristics

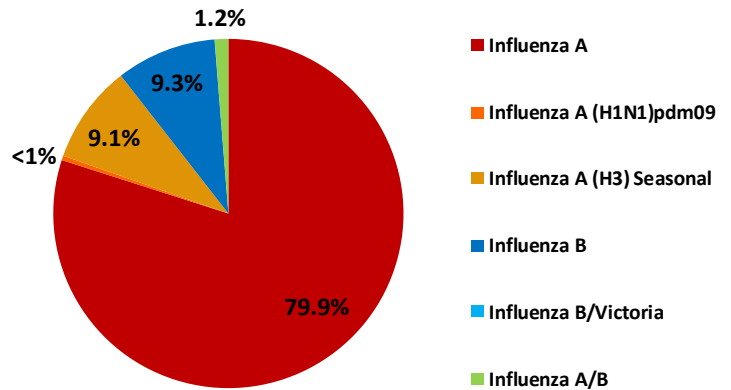


Table 1. Influenza Surveillance Indicators

Indicator	FY 2016-17*			FY 2015-16		Prior 3-Year Average**	
	Week 14	Week 13	FYTD#	Week 14	FYTD#	Week 14	FYTD#
	All influenza detections reported (rapid or PCR)	88	119	5,295	113	5,948	59
Percent of emergency department visits for ILI	2%	2%		2%		2%	
Percent of deaths registered with pneumonia and/or influenza	7%	6%		6%		7%	
Number of influenza-related deaths reported^	2	1	82	0	63	0	74

* FYTD=Fiscal Year To Date (FY is July 1 - June 30, Weeks 27-26). Total deaths reported in prior years: 68 in 2015-16, 97 in 2014-15, and 70 in 2013-14.

^ Previous weeks case counts or percentages may change due to delayed processing or reporting.

** Includes FYs 2013-14, 2014-15, and 2015-16.

^ Current FY deaths are shown by week of report; by week of death for prior FYs.

Vaccine halves risk of death from flu in kids

A new study from the Centers for Disease Control and Prevention (CDC) published last week in [Pediatrics](#) is the first of its kind to show that flu vaccination significantly reduced a child’s risk of dying from influenza.

The study, which looked at data from four flu seasons between 2010 and 2014, found that flu vaccination reduced the risk of flu-associated death by half (51 percent) among children with [underlying high-risk medical conditions](#) and by nearly two-thirds (65 percent) among healthy children. During the study period, 358 laboratory-confirmed, flu-associated child deaths were reported to CDC. Of the 358 reported pediatric deaths with known vaccination status (291), only one in four children, or 75 (26 percent), had been vaccinated. Researchers estimated how effective the vaccine was at preventing flu-related deaths by comparing the vaccination status of the children who died from flu to comparison groups of children. The comparison groups were obtained from two national surveys and a database of commercial insurance claims.

The study findings underscore the importance of the recommendation by CDC and the American Academy of Pediatrics that all children 6 months and older get an annual flu vaccine.

Through April 1, 2017, 68 pediatric deaths have been reported to CDC for the current flu season. Two pediatric deaths have been reported so far in San Diego County this season, and there were two pediatric deaths here in the 2015-16 season.

The study is available at: <http://pediatrics.aappublications.org/content/early/2017/03/30/peds.2016-4244>. Information about pediatric deaths is available in an interactive format at <https://gis.cdc.gov/GRASP/Fluview/PedFluDeath.html>.

Table 2. Influenza Detections Reported, FY 2016-17*

Positive Test Type/Subtype	Week 14	Total To-Date
Influenza A†	43	4,231
Influenza A(H1N1) Pandemic 2009	0	22
Influenza A (H3) Seasonal	1	482
Influenza B†	43	490
Influenza B/Victoria	0	1
Influenza B/Yamagata	0	3
Influenza A/B†	1	66
Total	88	5,295

* FY is July 1- June 30.

† No further characterization performed, or results were not yet available at time of publication.

Note: Totals may change due to further laboratory findings.

Influenza Watch

Figure 1. Percent of Emergency Department Visits for Influenza-like Illness by Week and FY

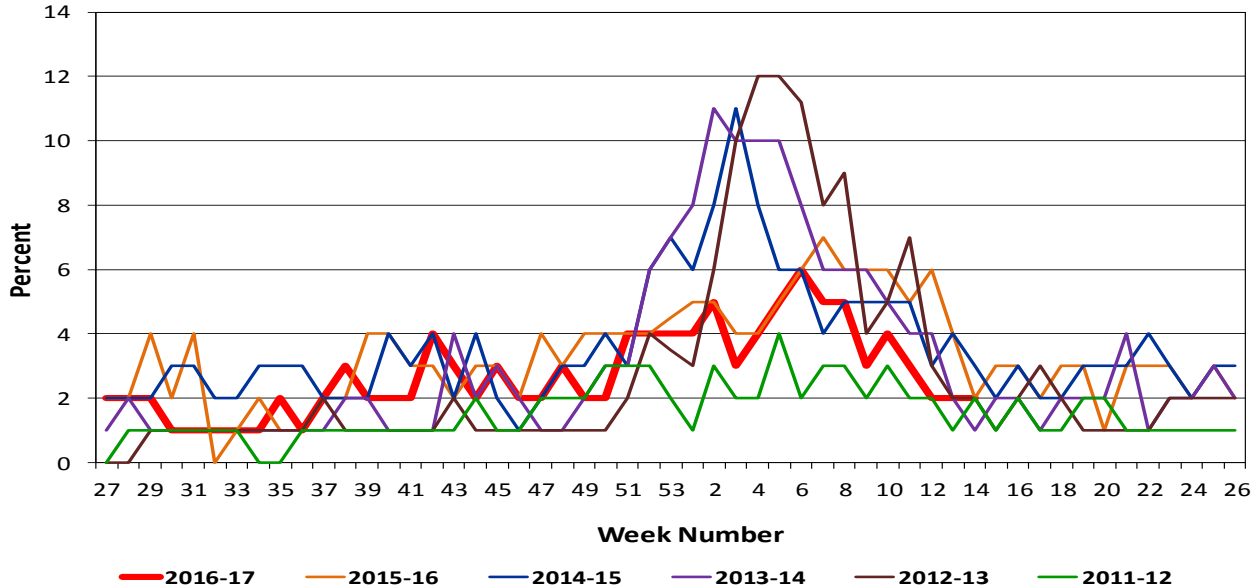
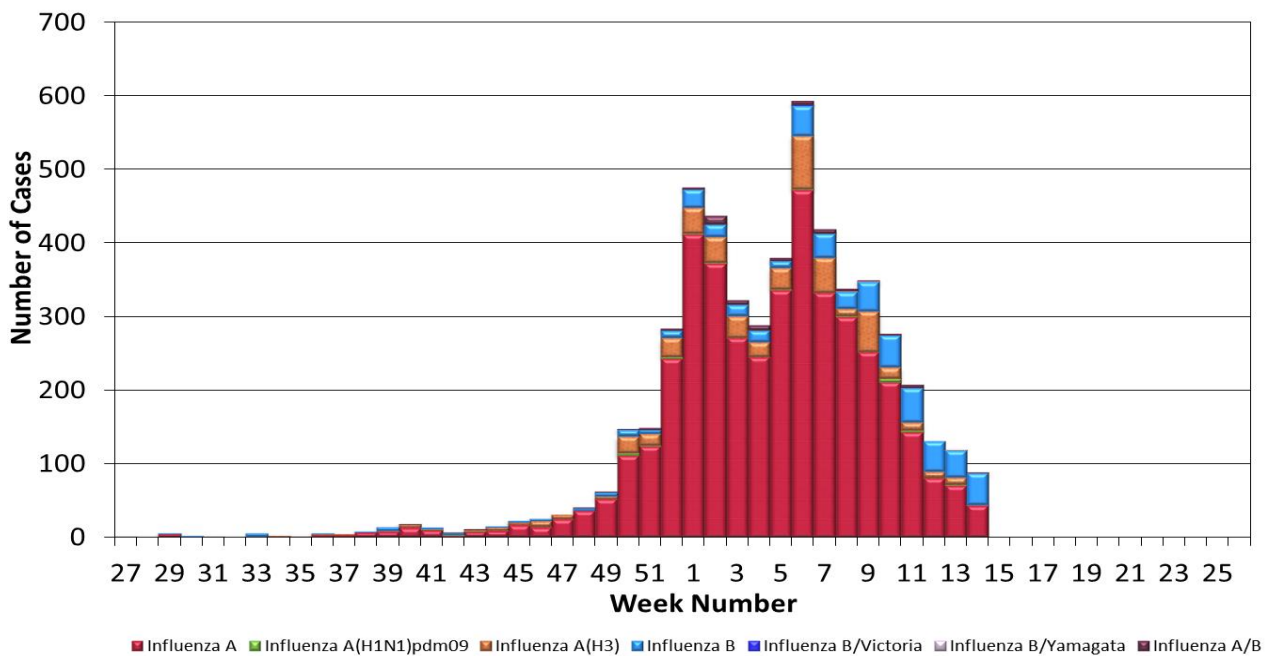


Figure 2. San Diego County Influenza Detections by Type and Week of Report, 2016-17 (N=5,295)



Influenza Watch

Figure 3. Percent of Reported Influenza Cases by Age Group and Season, 2011-12 to 2016-17 YTD

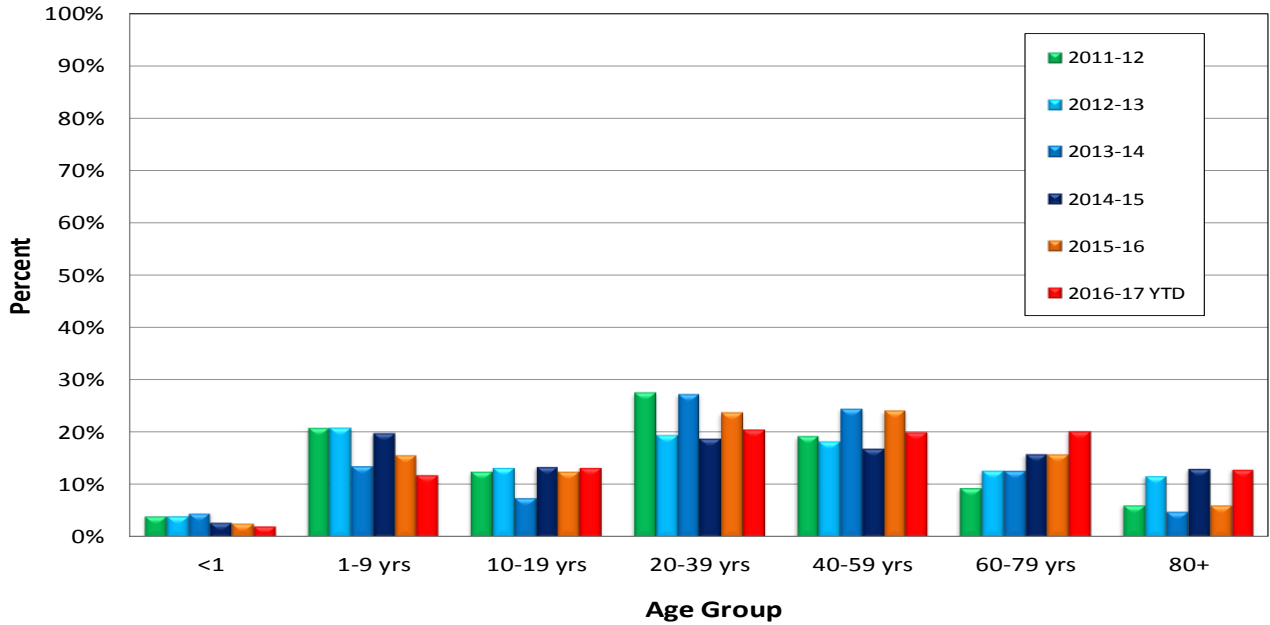
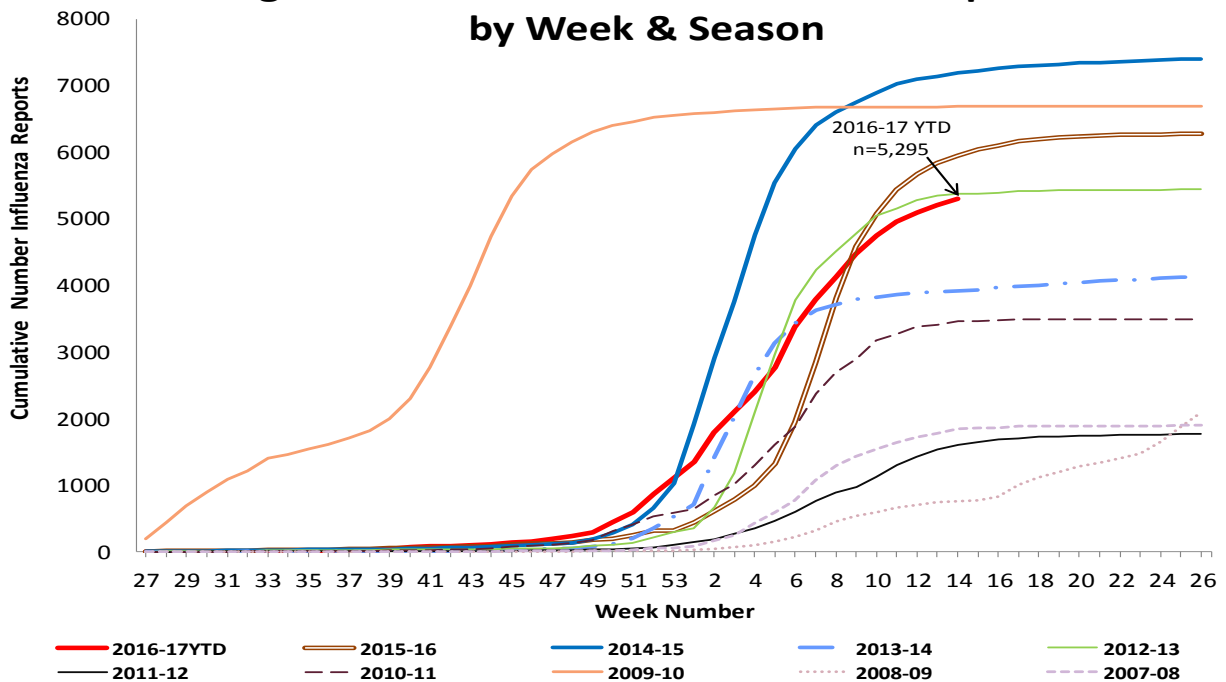


Figure 4. Cumulative Influenza Case Reports by Week & Season



Influenza Watch

Figure 5. Percent of San Diego County Emergency Department Visits for Influenza-like Illness by Week and FY Compared to 5-Year Baseline & Upper 95% Threshold Values (Serfling Method)

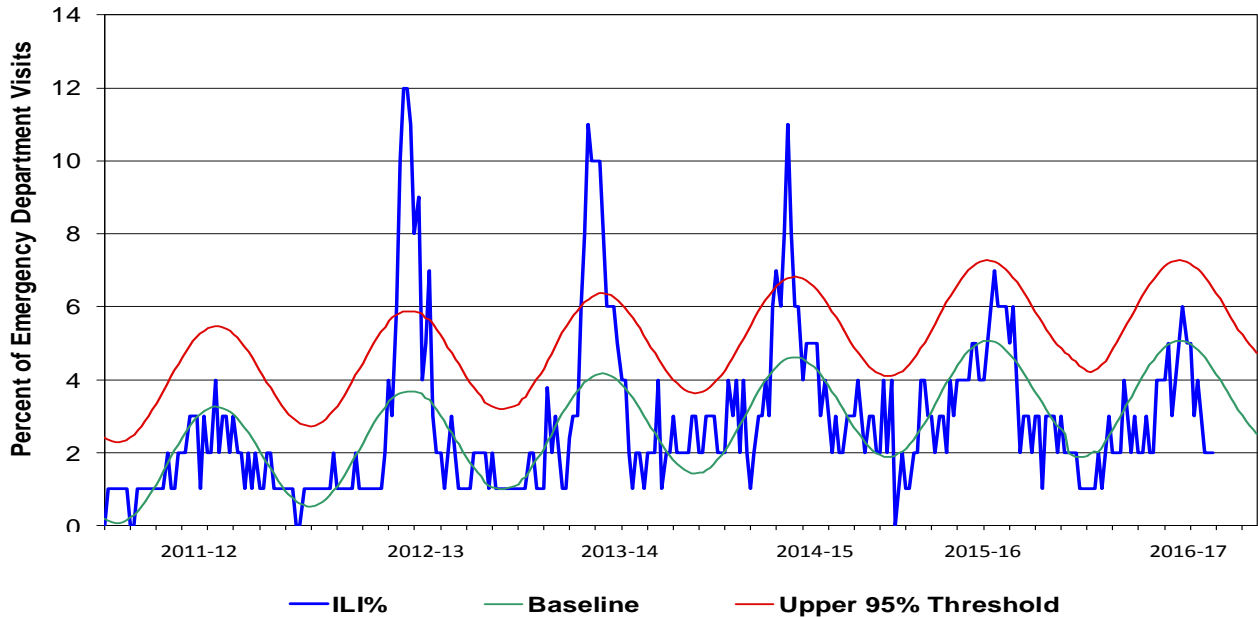
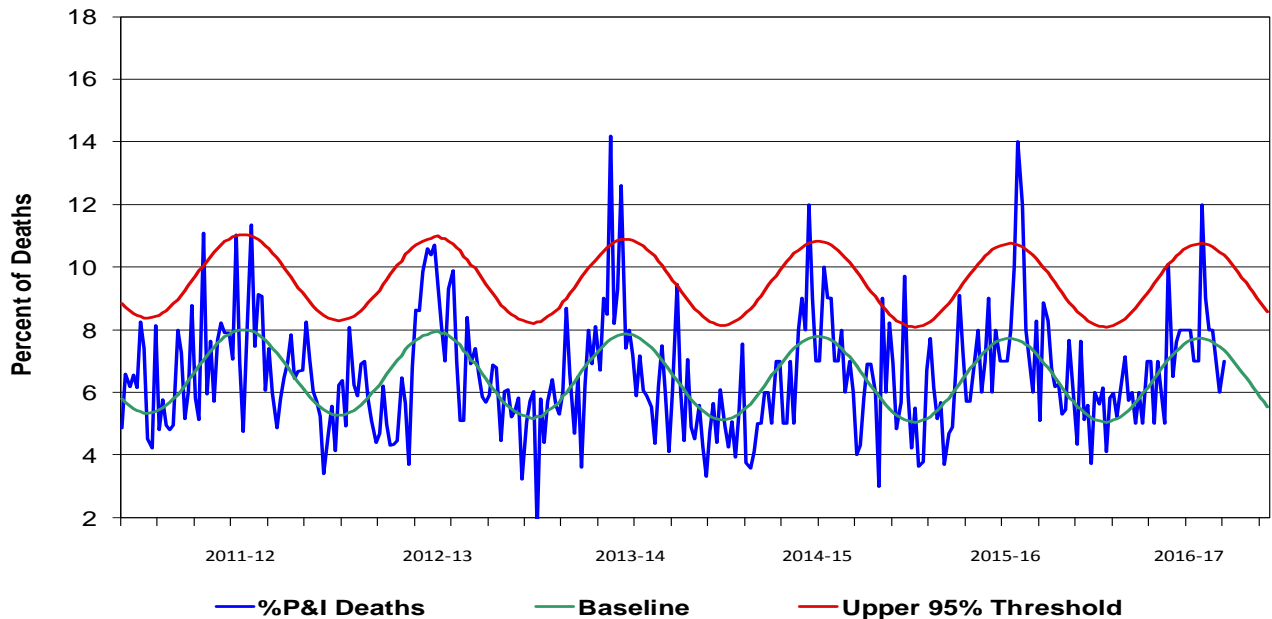


Figure 6. Percent of San Diego County Deaths Registered with Pneumonia and/or Influenza by Week and FY Compared to Prior 5-Year Baseline & Upper 95% Threshold Values (Serfling Method)



Influenza Watch

Figure 7. Influenza Deaths by Type, and Season

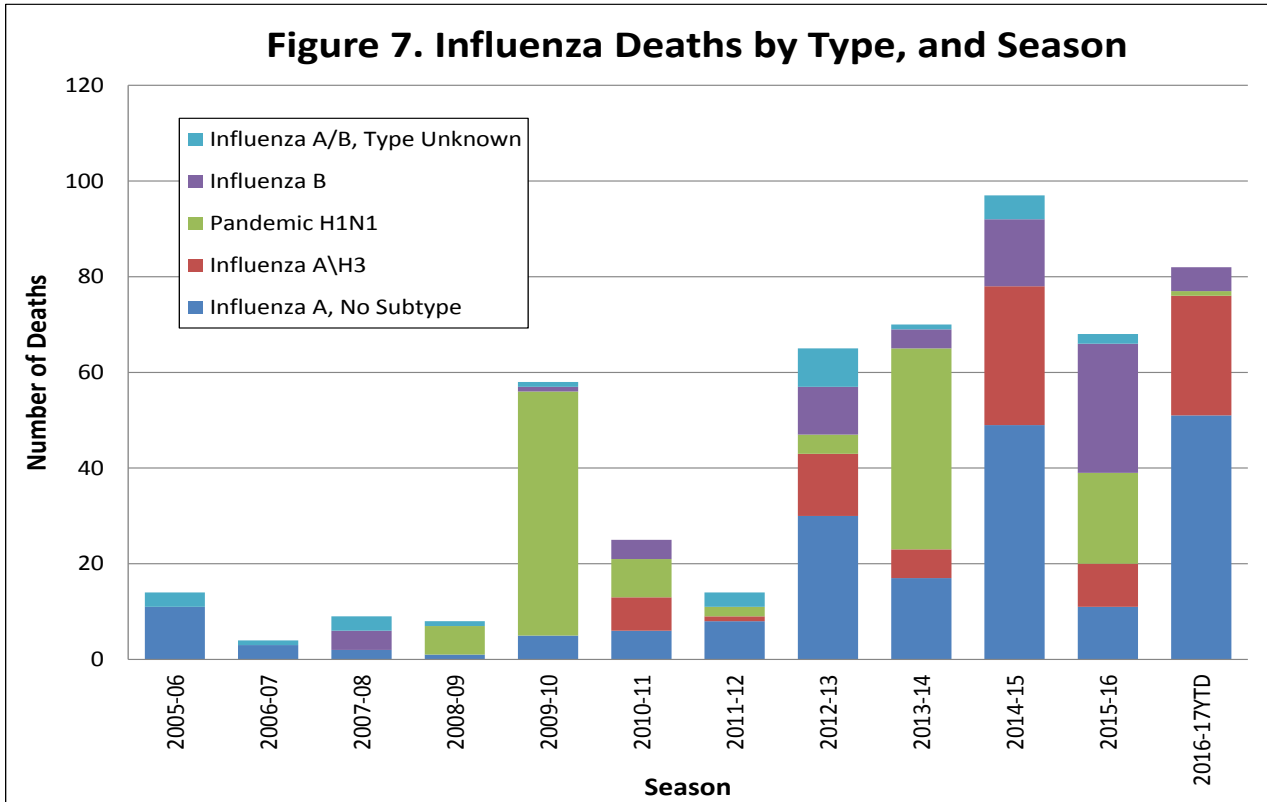


Figure 8. Influenza Deaths by Age and Season

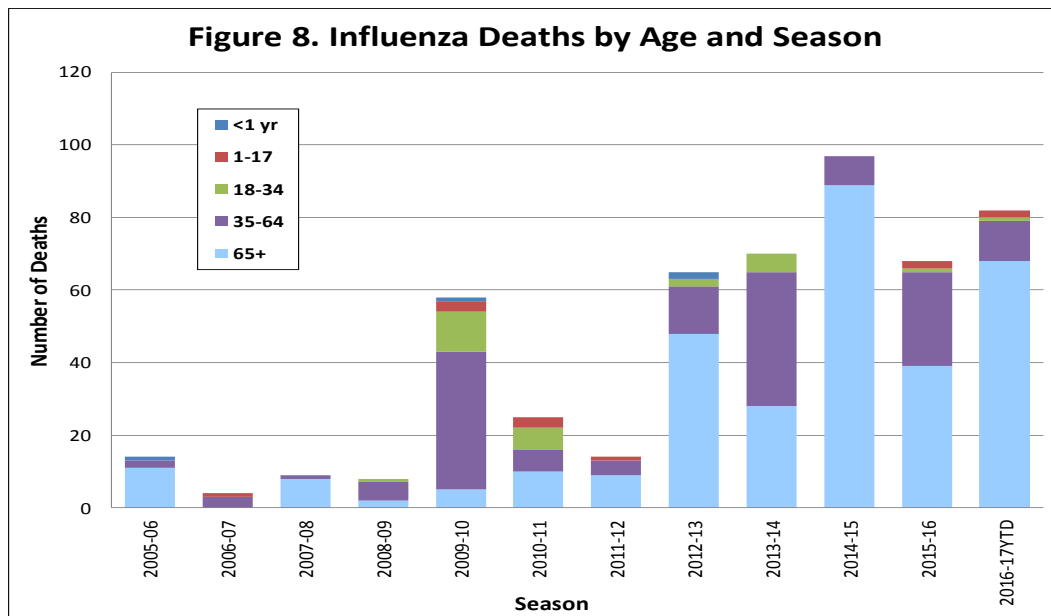
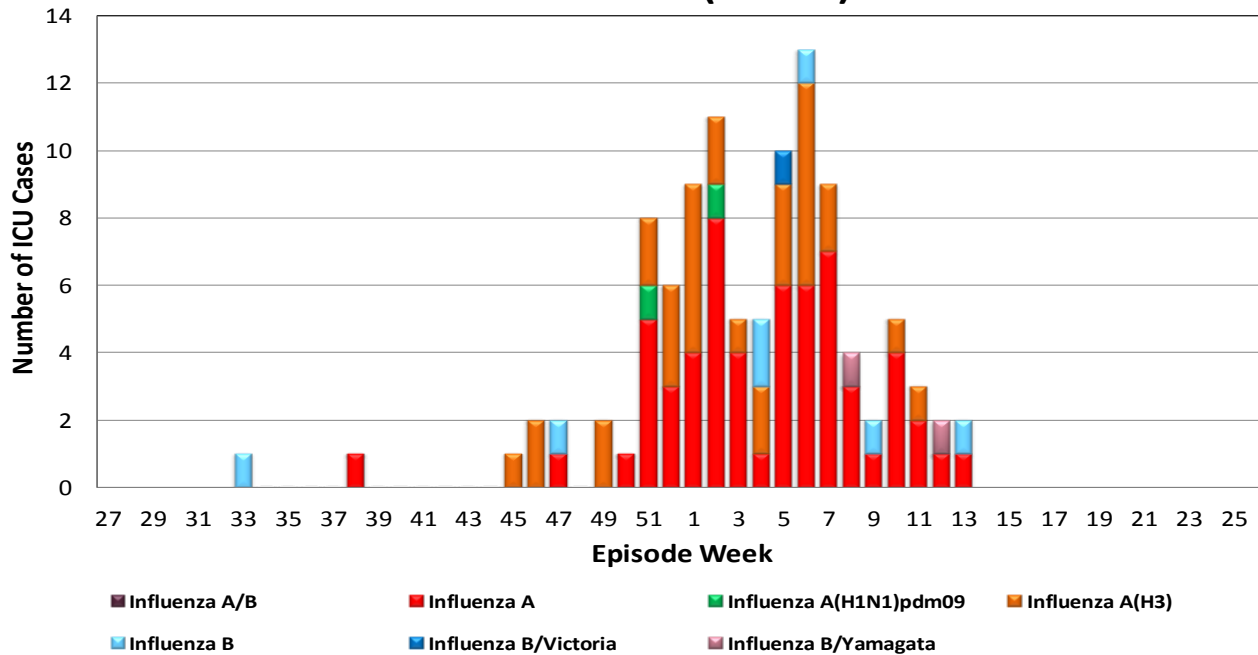


Figure 9. Number of Influenza Cases Requiring ICU Care by Episode Week and Type of Influenza, 2016-17 YTD (N=104)



Episode week is the week of symptom onset, or earliest available date in which the case is identified.

Influenza Reporting in San Diego County

Local providers are encouraged to report laboratory positive influenza detections to the County Epidemiology Program by **FAX (858) 715-6458**. Please fax a [Case Report](#) Form and/or a printed laboratory result, and indicate if the patient was admitted to ICU or died, and/or is a resident of a congregate living facility.

For questions regarding sending specimens to Public Health Laboratory (PHL), call (619) 692-8500. Click here for the updated PHL [PCR Test Request Form](#). Contact the Epidemiology Program with any questions at **(619) 692-8499** or by email to: EpiDiv.HHSA@sdcounty.ca.gov.

Resources

- San Diego County Influenza Surveillance Weekly [Slide Deck](#) - presentation version of this report
- County of San Diego Immunization Program www.sdiz.org
- California Department of Public Health [Influenza](#)
- Centers for Disease Control and Prevention Influenza Surveillance [Weekly Report](#)