

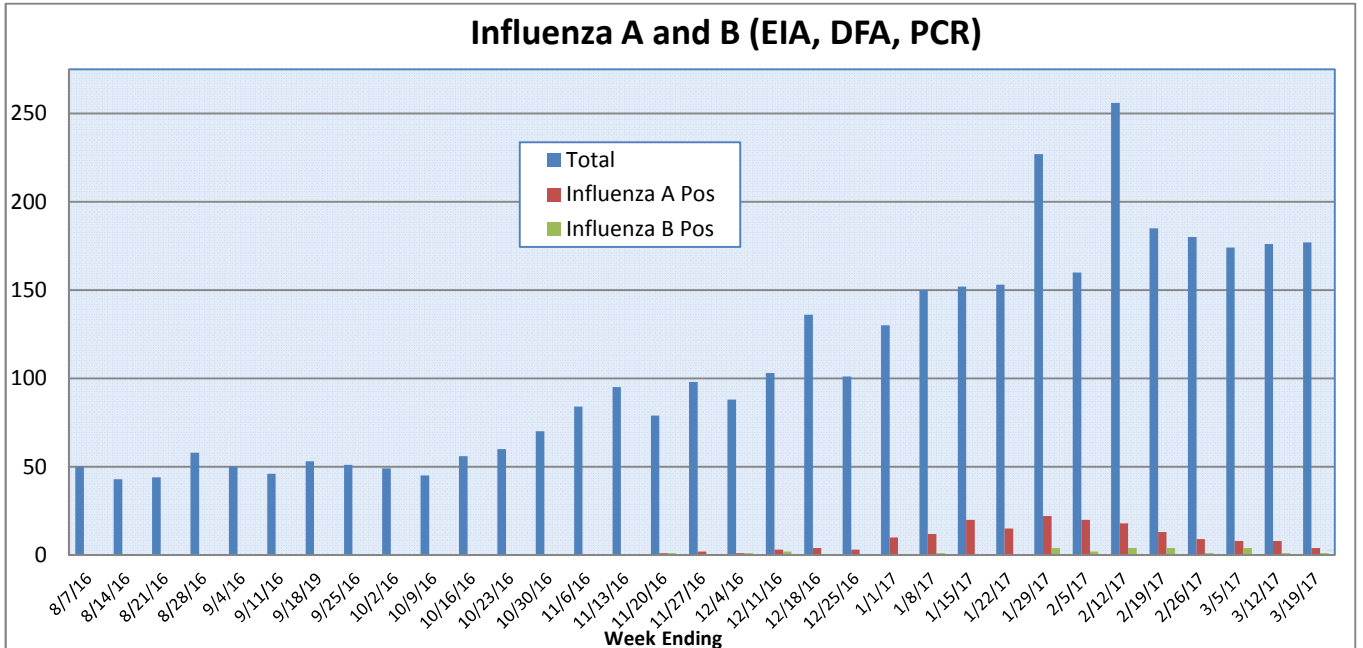
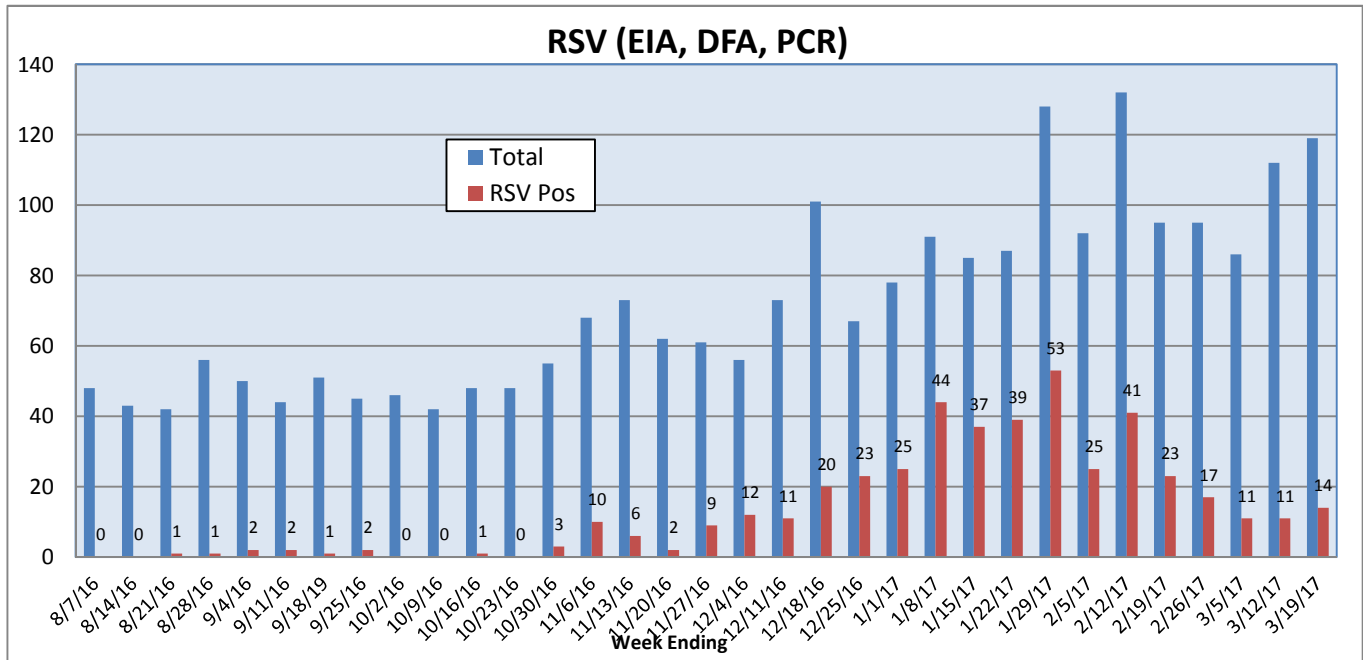
Pathogens Report

The following report is a listing of selected pathogens detected at Rady Children's Hospital Laboratory. The report includes data from adult and pediatric specimens collected locally.

March 13-19, 2017

	Positive Tests Current Week	Total Tests Current Week	Positive Tests YTD*	Total Tests YTD*
RSV (DFA and PCR)	14	119	437	1954
Influenza A (EIA, DFA, and PCR)	4	177	173	3135
Influenza B (EIA, DFA, and PCR)	1	177	26	3135
Parainfluenza (PCR and DFA)	4	100	92	1881
Adenovirus (PCR and DFA)	9	100	54	1881
Rhinovirus (PCR)	14	76	327	1412
Metapneumovirus (PCR)	6	76	49	1412
B. pertussis/parapertussis (PCR)	5	94	73	1810
Enterovirus, CSF (PCR)	0	11	10	240

*From October 3, 2016.



Pathogens Report

