

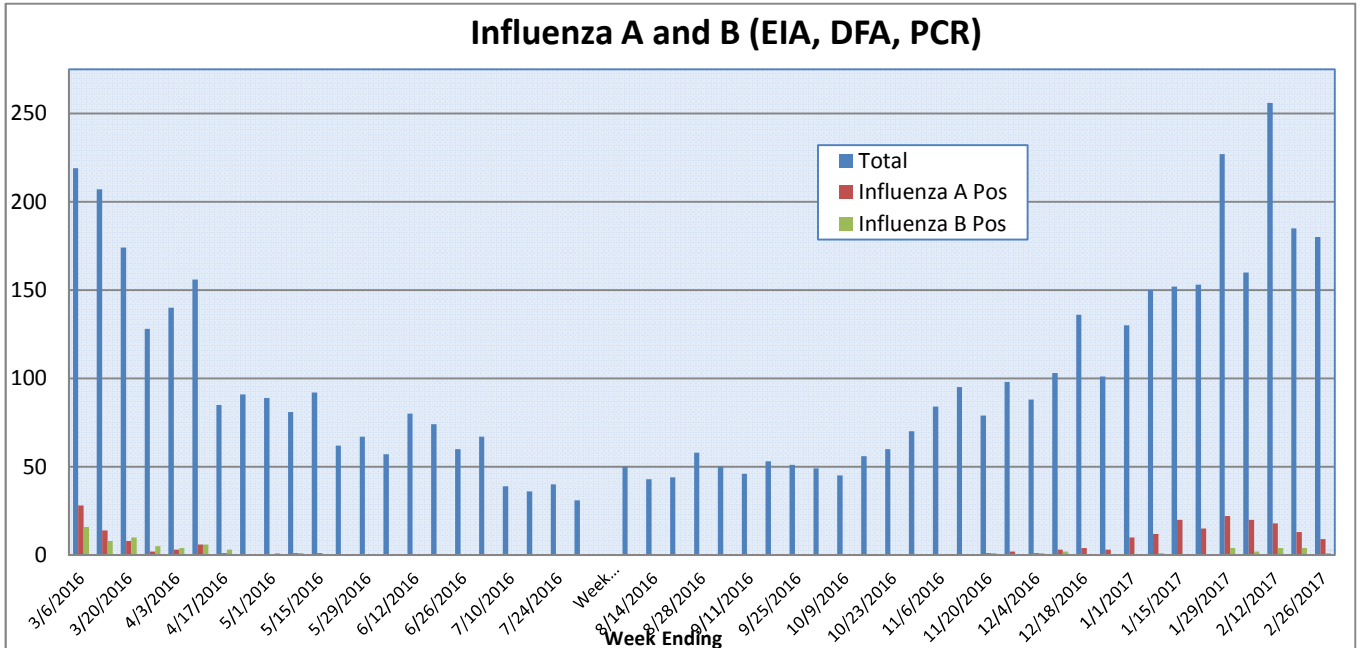
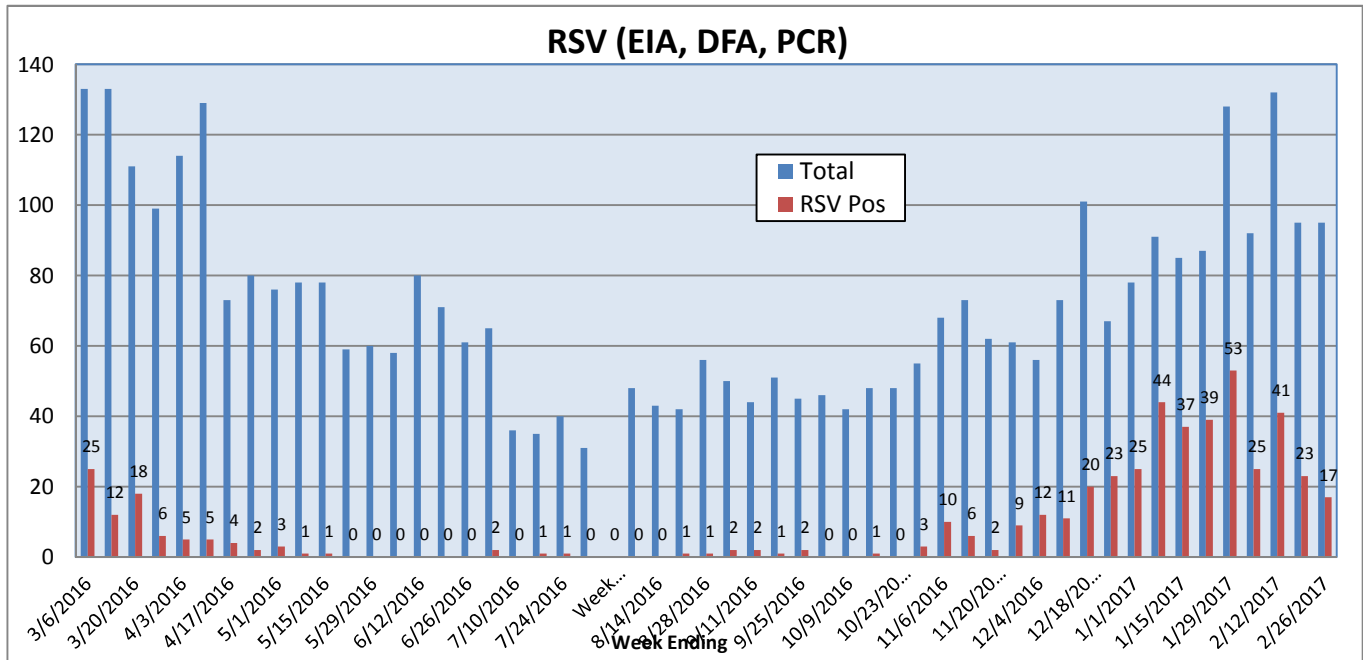
Pathogens Report

The following report is a listing of selected pathogens detected at Rady Children's Hospital Laboratory. The report includes data from adult and pediatric specimens collected locally.

February 20-26, 2017

	Positive Tests Current Week	Total Tests Current Week	Positive Tests YTD*	Total Tests YTD*
RSV (DFA and PCR)	17	95	401	1637
Influenza A (EIA, DFA, and PCR)	9	180	153	2806
Influenza B (EIA, DFA, and PCR)	1	180	20	2806
Parainfluenza (PCR and DFA)	1	95	83	1620
Adenovirus (PCR and DFA)	4	95	39	1620
Rhinovirus (PCR)	11	60	288	1221
Metapneumovirus (PCR)	3	60	25	1221
B. pertussis/parapertussis (PCR)	4	75	62	1553
Enterovirus, CSF (PCR)	0	9	9	211

*From October 3, 2016.



Pathogens Report

