



INFLUENZA WATCH

The purpose of the weekly *Influenza Watch* is to summarize current influenza surveillance in San Diego County. **Please note that reported weekly data are preliminary and may change due to delayed submissions and additional laboratory results.**

Report Contents

- Page 1: Overview & Indicators
- Page 2: Virus Characteristics
- Pages 3-7: Trend graphs
- Page 7: Reporting Information

Current Week

Current Week 3 (ending 1/21/2017)

- 322 new influenza detections reported: *Elevated*
- 3% influenza-like-illness (ILI) among emergency department visits: *Expected level*
- 7 influenza-related deaths reported this week
- 8% of deaths registered with pneumonia and/or influenza: *Expected level*

Current Season Summary

2,106
Total Cases

43
ICU Cases

21
Deaths

14
Outbreaks

Virus Characteristics

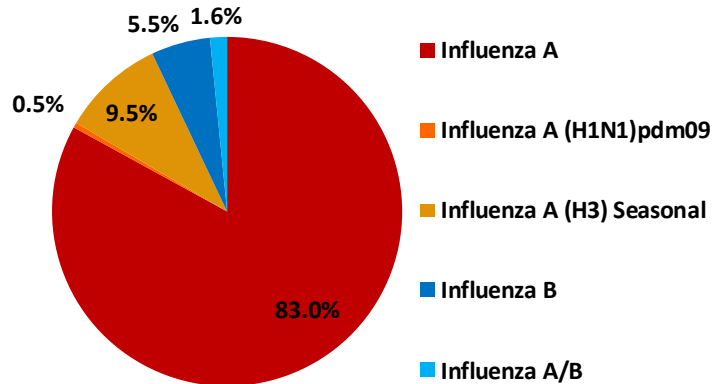


Table 1. Influenza Surveillance Indicators

Indicator	FY 2016-17*			FY 2015-16		Prior 3-Year Average**	
	Week 3	Week 2	FYTD#	Week 3	FYTD#	Week 3	FYTD#
	All influenza detections reported (rapid or PCR)	322	437	2,106	181	784	543
Percent of emergency department visits for ILI	3%	5%		4%		8%	
Percent of deaths registered with pneumonia and/or influenza	8%	8%		6%		8%	
Number of influenza-related deaths reported^	7	6	21	3	6	8	18

* FYTD=Fiscal Year To Date (FY is July 1 - June 30, Weeks 27-26). Total deaths reported in prior years: 68 in 2015-16, 97 in 2014-15, and 70 in 2013-14.

* Previous weeks case counts or percentages may change due to delayed processing or reporting.

** Includes FYs 2013-14, 2014-15, and 2015-16.

^ Current FY deaths are shown by week of report; by week of death for prior FYs.

Influenza Activity in California and San Diego County

Influenza activity was [classified as "widespread"](#) throughout California during Week 2 (ending 1/14/17). Through Week 2 of this influenza season, California Department of Public Health (CDPH) received 14 reports of laboratory-confirmed influenza-associated deaths among patients under age 65 years. The percentage of outpatient visits for influenza-like illness during Week 2 was 2.8%, which exceeds the epidemic threshold for this time of the year. Northern California has been experiencing higher rates of influenza than Southern California so far this season.

In San Diego County, activity is also widespread, though the reported number of cases has recently decreased from the peak of 476 cases in Week 1 (ending 1/7/17). More than one peak of activity may be seen during an influenza season, so **any county resident over 6 months of age who has not been vaccinated this season should get the shot now to protect themselves from influenza.**

Many severe cases of influenza in persons under the age of 65 years have been reported in San Diego County this season. As of Week 3 (ending 1/21/17), the following cases have been reported:

- 16 intensive care unit (ICU) cases in adults aged 18 to 64 years;
- 4 ICU cases in children under the age of 18 years;
- 4 deaths in adults aged 18 to 64 years; and
- No deaths in children under the age of 18 years.

Table 2. Influenza Detections Reported, FY 2016-17*

Positive Test Type/Subtype	Week 3	Total To-Date
Influenza A†	271	1,748
Influenza A(H1N1) Pandemic 2009	0	10
Influenza A (H3) Seasonal	30	200
Influenza B†	15	115
Influenza B/Victoria	0	0
Influenza B/Yamagata	0	0
Influenza A/B†	6	33
Total	322	2,106

* FY is July 1- June 30.

† No further characterization performed, or results were not yet available at time of publication.

Note: Totals may change due to further laboratory findings.

Influenza Watch

Figure 1. Percent of Emergency Department Visits for Influenza-like Illness by Week and FY

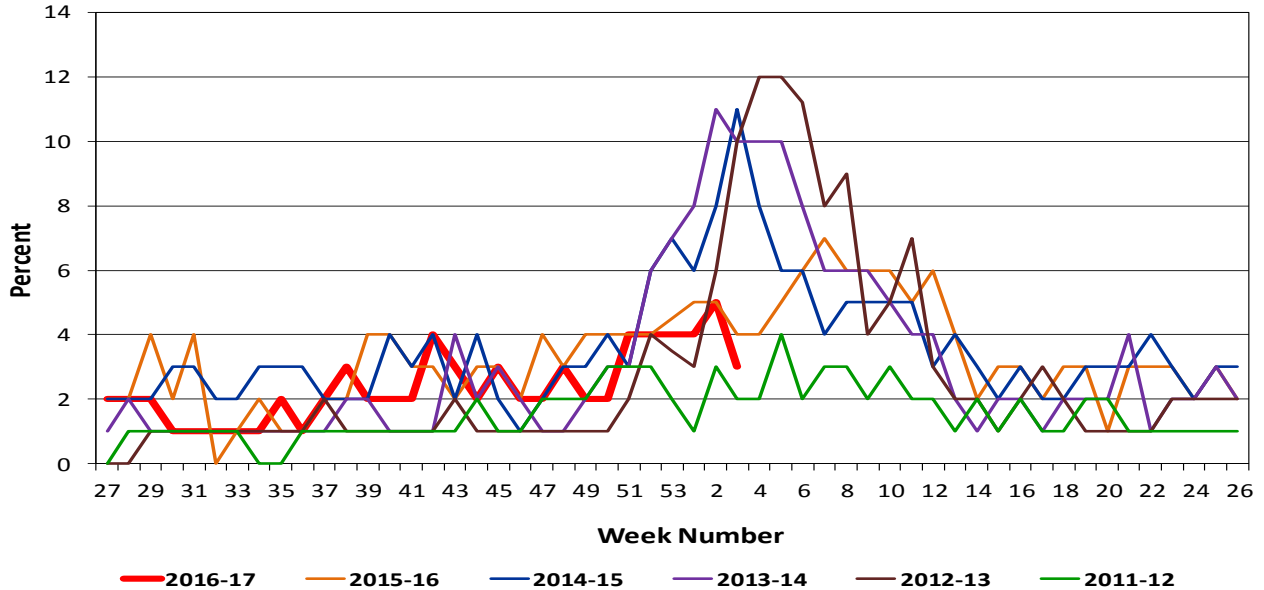
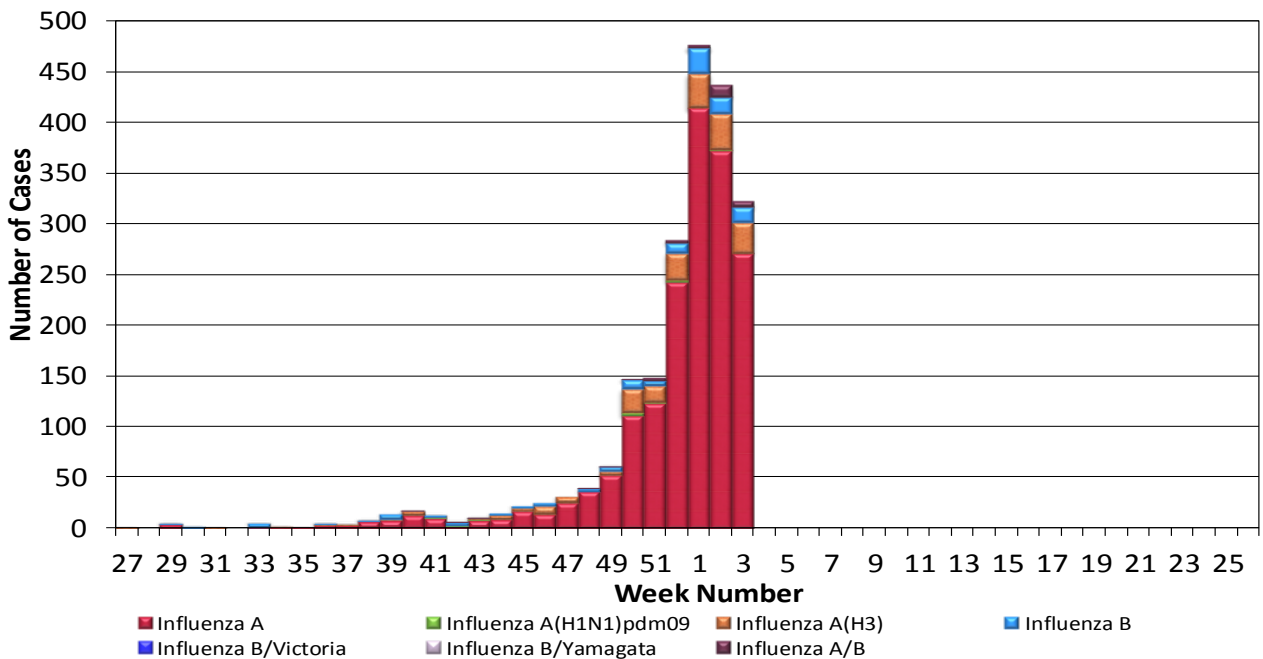


Figure 2. San Diego County Influenza Detections by Type and Week of Report, 2016-17 (N=2,106)



Influenza Watch

Figure 3. Percent of Reported Influenza Cases by Age Group and Season, 2011-12 to 2016-17 YTD

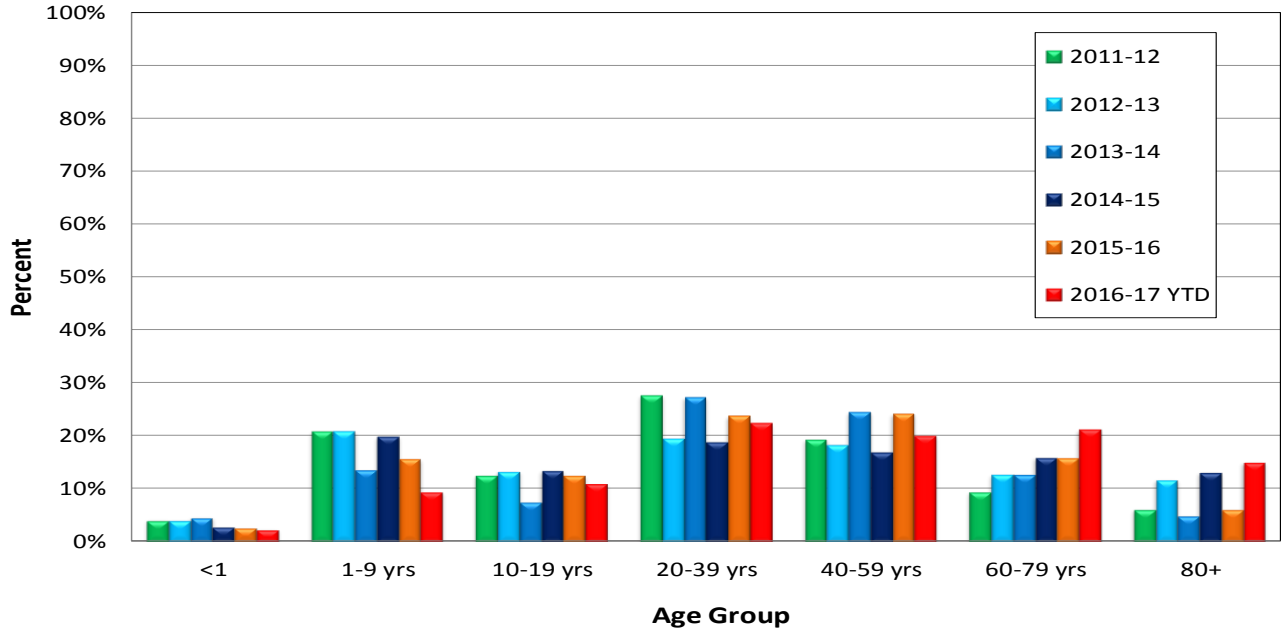
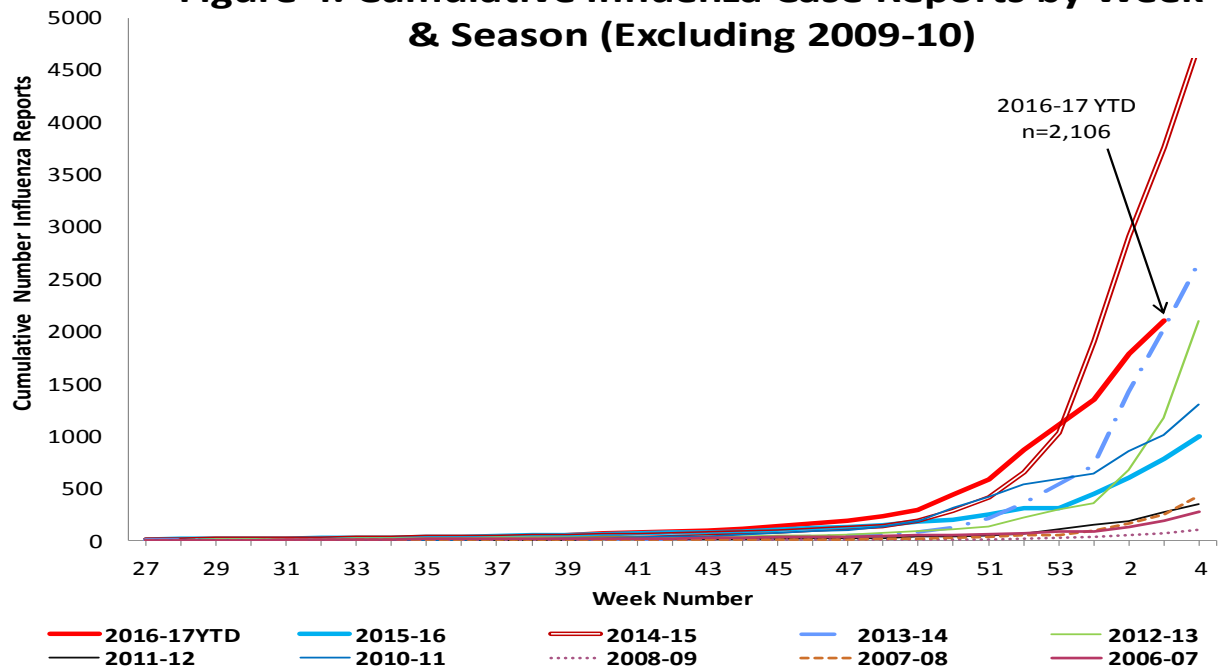


Figure 4. Cumulative Influenza Case Reports by Week & Season (Excluding 2009-10)



Influenza Watch

Figure 5. Percent of San Diego County Emergency Department Visits for Influenza-like Illness by Week and FY Compared to 5-Year Baseline & Upper 95% Threshold Values (Serfling Method)

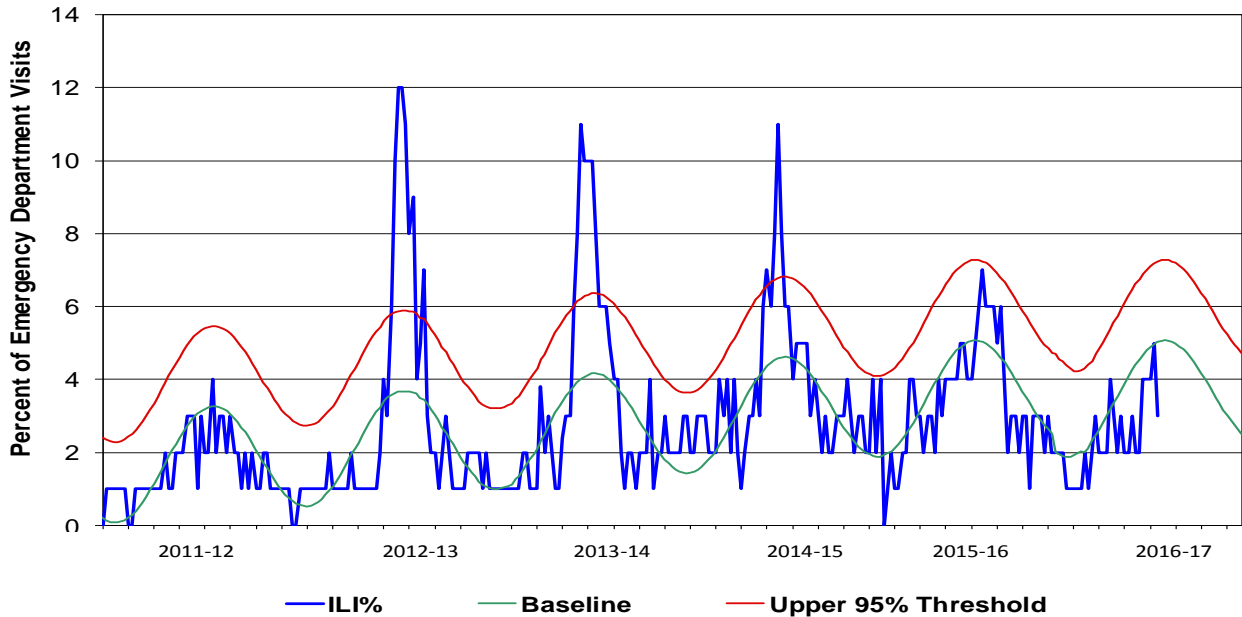
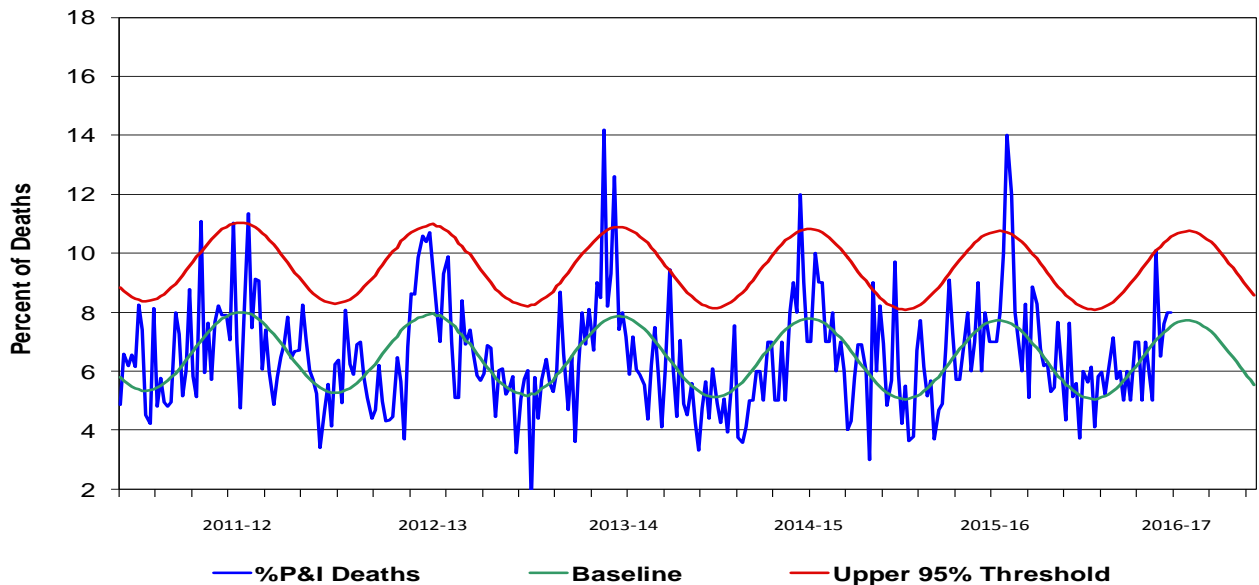


Figure 6. Percent of San Diego County Deaths Registered with Pneumonia and/or Influenza by Week and FY Compared to Prior 5-Year Baseline & Upper 95% Threshold Values (Serfling Method)



Influenza Watch

Figure 7. Influenza Deaths by Type, and Season

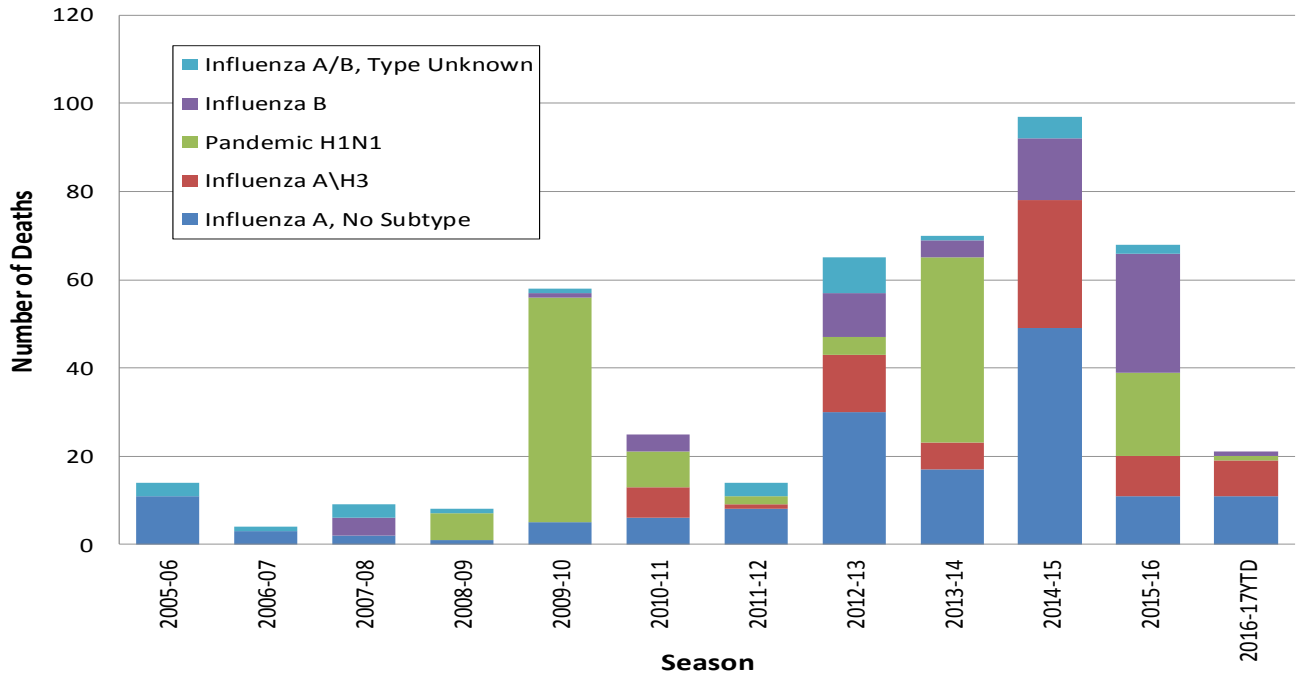


Figure 8. Influenza Deaths by Age and Season

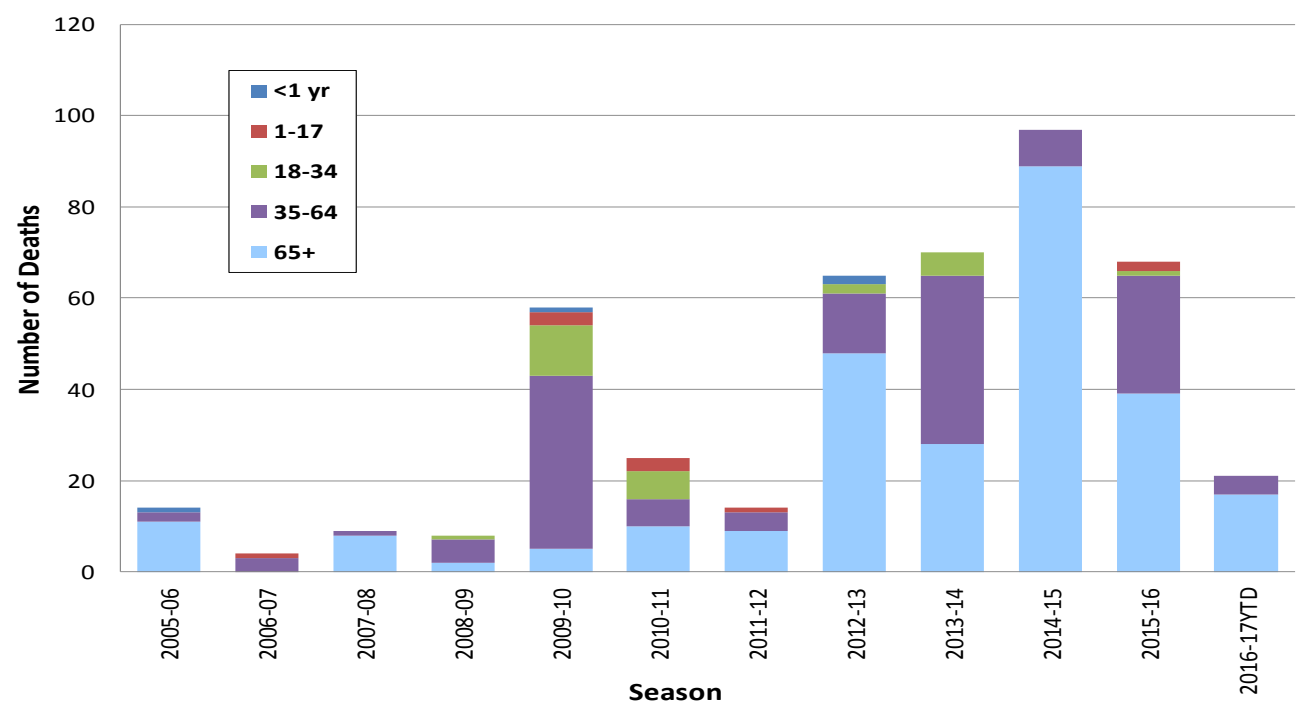
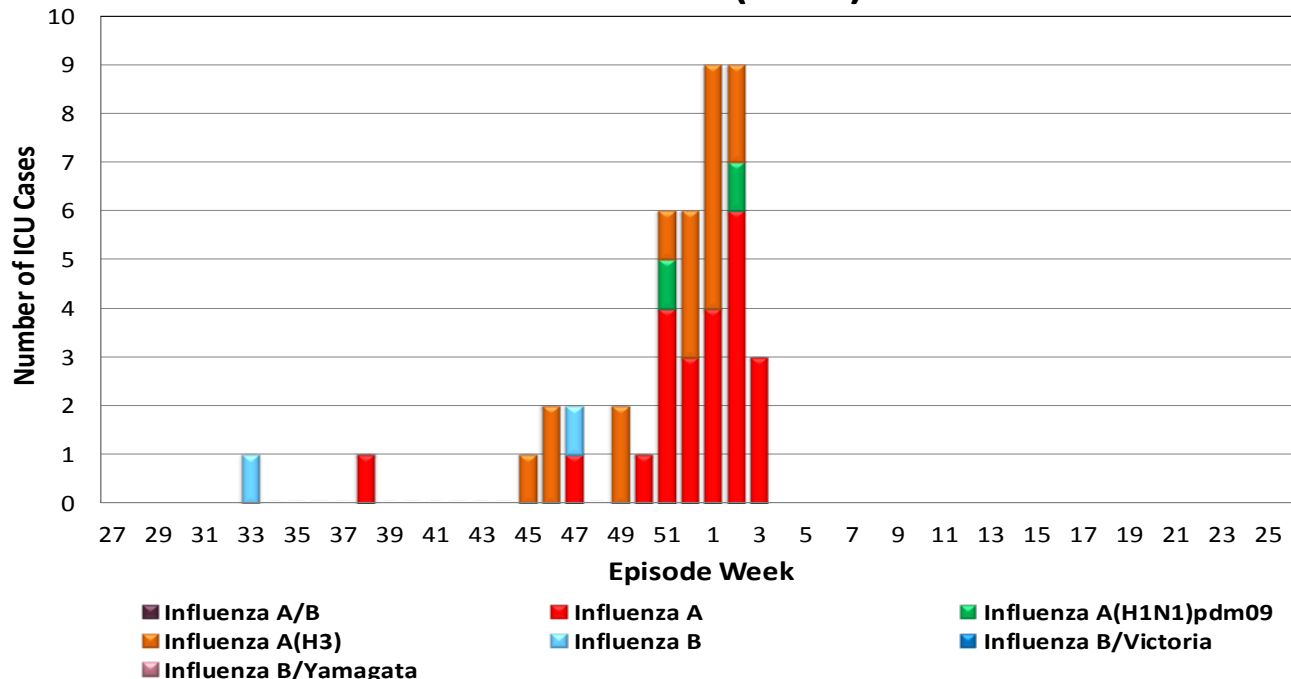


Figure 9. Number of Influenza Cases Requiring ICU Care by Episode Week and Type of Influenza, 2016-17 YTD (N=43)



Episode week is the week of symptom onset, or earliest available date in which the case is identified.

Influenza Reporting in San Diego County

Local providers are encouraged to report laboratory positive influenza detections to the County Epidemiology Program by **FAX (858) 715-6458**. Please fax a [Case Report](#) Form and/or a printed laboratory result, and indicate if the patient was admitted to ICU or died, and/or is a resident of a congregate living facility.

For questions regarding sending specimens to Public Health Laboratory (PHL), call (619) 692-8500. Click here for the updated PHL [PCR Test Request Form](#). Contact the Epidemiology Program with any questions at **(619) 692-8499** or by email to: EpiDiv.HHSA@sdcounty.ca.gov.

Resources

- San Diego County Influenza Surveillance Weekly [Slide Deck](#) - presentation version of this report
- County of San Diego Immunization Program www.sdiz.org
- California Department of Public Health [Influenza](#)
- Centers for Disease Control and Prevention Influenza Surveillance [Weekly Report](#)