



INFLUENZA WATCH

The purpose of the weekly *Influenza Watch* is to summarize current influenza surveillance in San Diego County. **Please note that reported weekly data are preliminary and may change due to delayed submissions and additional laboratory results.**

Report Contents

- Page 1: Overview & Indicators
- Page 2: Virus Characteristics
- Pages 3-7: Trend graphs
- Page 7: Reporting Information

Current Week

Current Week 2 (ending 1/14/2017)

- 442 new influenza detections reported: *Elevated*
- 5% influenza-like-illness (ILI) among emergency department visits: *Expected level*
- 6 influenza-related deaths reported this week
- 8% of deaths registered with pneumonia and/or influenza: *Expected level*

Current Season Summary

1,788
Total Cases

37
ICU Cases

14
Deaths

14
Outbreaks

Virus Characteristics

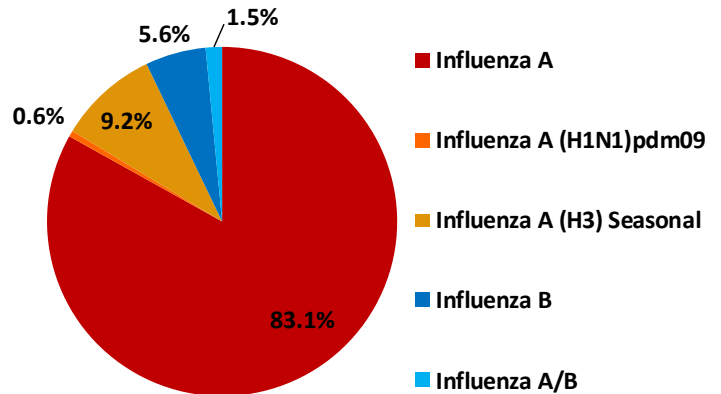


Table 1. Influenza Surveillance Indicators

Indicator	FY 2016-17*			FY 2015-16		Prior 3-Year Average**	
	Week 2	Week 1	FYTD#	Week 2	FYTD#	Week 2	FYTD#
	All influenza detections reported (rapid or PCR)	442	474	1,788	156	603	624
Percent of emergency department visits for ILI	5%	4%		5%		8%	
Percent of deaths registered with pneumonia and/or influenza	8%	8%		9%		9%	
Number of influenza-related deaths reported^	6	4	14	0	3	5	10

* FYTD=Fiscal Year To Date (FY is July 1 - June 30, Weeks 27-26). Total deaths reported in prior years: 68 in 2015-16, 97 in 2014-15, and 70 in 2013-14.

^ Previous weeks case counts or percentages may change due to delayed processing or reporting.

** Includes FYs 2013-14, 2014-15, and 2015-16.

^ Current FY deaths are shown by week of report; by week of death for prior FYs.

Influenza Outbreaks in Long-Term Care Facilities

Influenza activity is high and rapidly increasing [in California](#). The California Department of Public Health (CDPH) has recently received numerous reports of influenza outbreaks in health care facilities, particularly in long-term care facilities (LTCFs). Twelve of the 14 confirmed influenza outbreaks in San Diego County this season have been in LTCFs. LTCFs should be prepared to provide care safely without putting residents at risk during influenza season.

On January 13, 2017, CDPH released an [all facilities letter \(AFL 17-02\)](#) that reiterates established guidance on the prevention and control of influenza outbreaks in LTCFs. Infection control measures for LTCF residents with suspected or confirmed influenza include standard and droplet precautions. Additional measures to reduce transmission risk include having symptomatic residents stay in their own rooms as much as possible, restricting common activities, and having meals served in rooms. Employees and visitors should be screened for illness. Ill health care personnel should be placed on sick leave and ill visitors discouraged from entering the facility.

In October, 2016, CDPH updated guidance for LTCF's in [Recommendations for the Prevention and Control of Influenza – California Long-Term Care Facilities](#). Detailed guidelines and recommendations are also available from the Centers for Disease Control and Prevention in [Interim Guidance for Influenza Outbreak Management in Long-Term Care Facilities](#).

An influenza outbreak in any institutional setting ([defined](#) as at least one case of laboratory confirmed influenza in the setting of a cluster of two or more cases of influenza-like illness within a 72 hour period) should be reported **immediately** to the [County Epidemiology Program](#).

Table 2. Influenza Detections Reported, FY 2016-17*

Positive Test Type/Subtype	Week 2	Total To-Date
Influenza A†	381	1,486
Influenza A(H1N1) Pandemic 2009	1	10
Influenza A (H3) Seasonal	31	165
Influenza B†	17	100
Influenza B/Victoria	0	0
Influenza B/Yamagata	0	0
Influenza A/B†	12	27
Total	442	1,788

* FY is July 1- June 30.

† No further characterization performed, or results were not yet available at time of publication.

Note: Totals may change due to further laboratory findings.

Influenza Watch

Figure 1. Percent of Emergency Department Visits for Influenza-like Illness by Week and FY

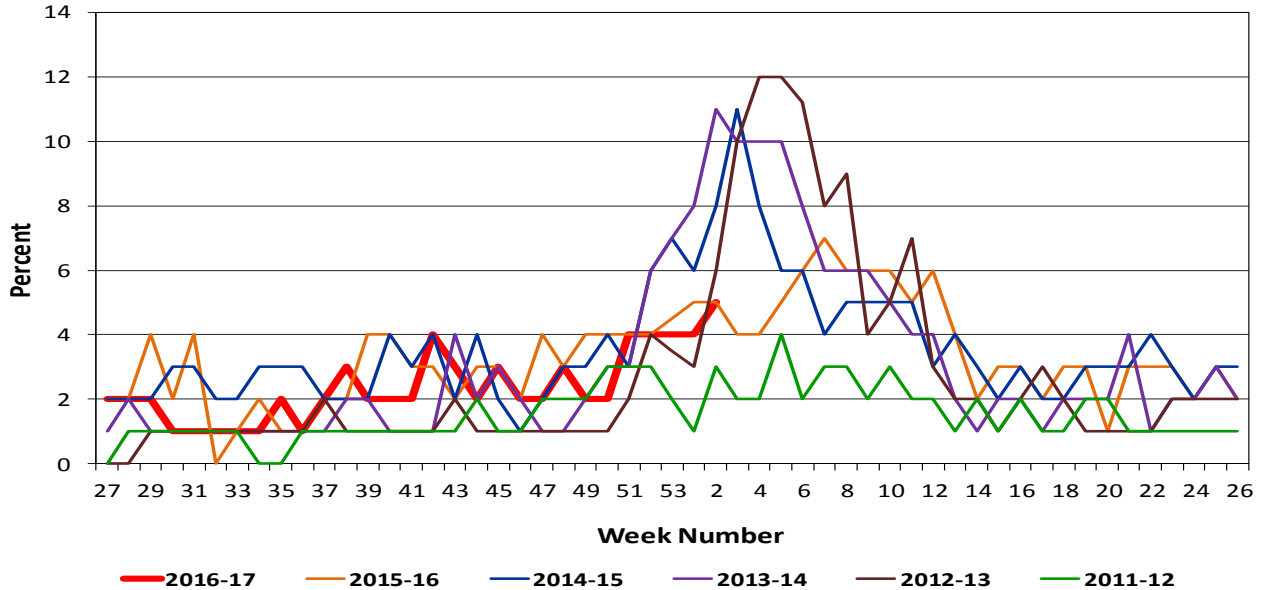
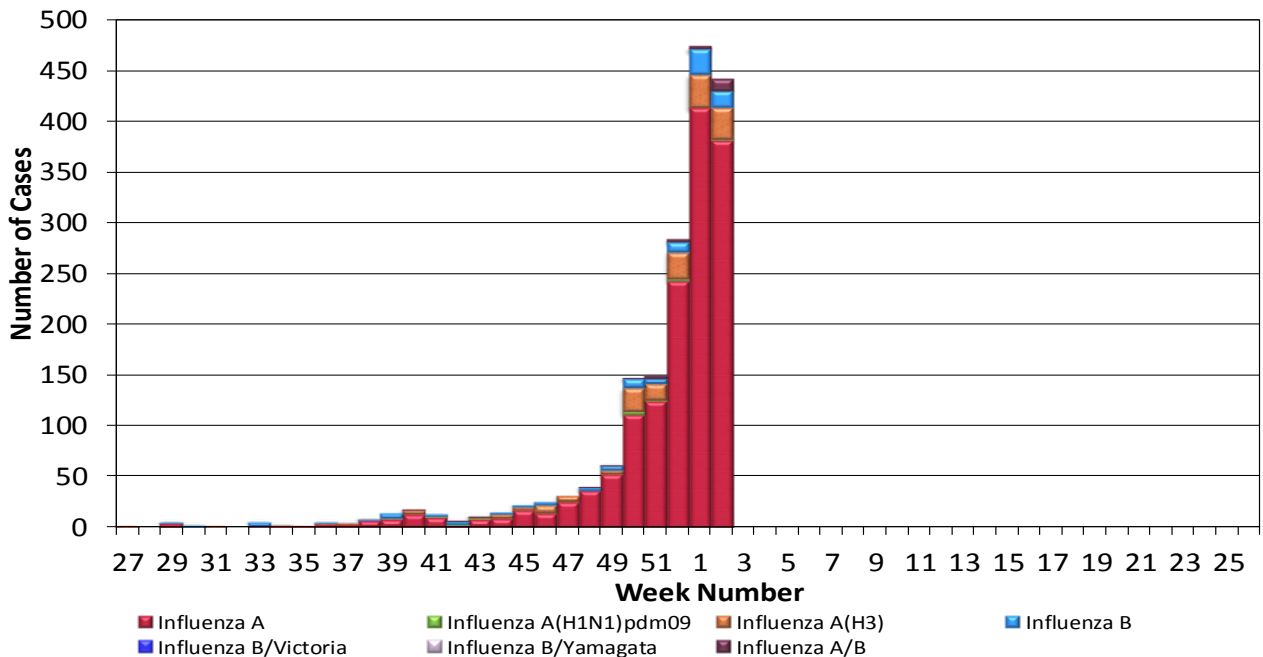


Figure 2. San Diego County Influenza Detections by Type and Week of Report, 2016-17 (N=1,788)



Influenza Watch

Figure 3. Percent of Reported Influenza Cases by Age Group and Season, 2011-12 to 2016-17 YTD

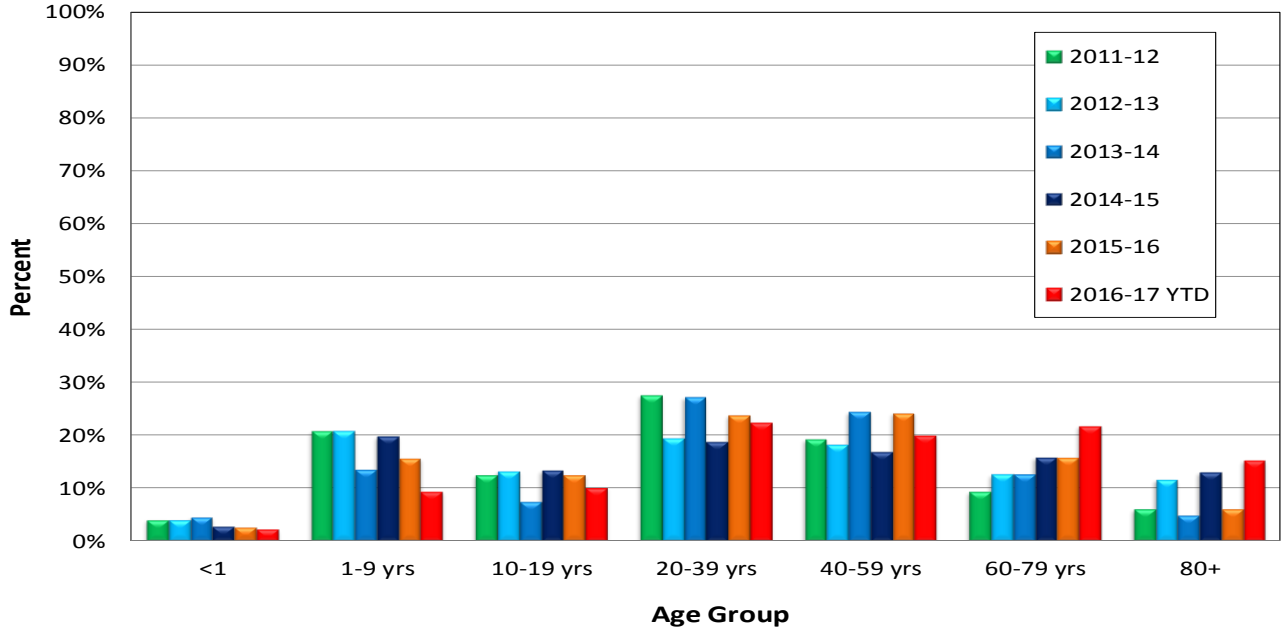
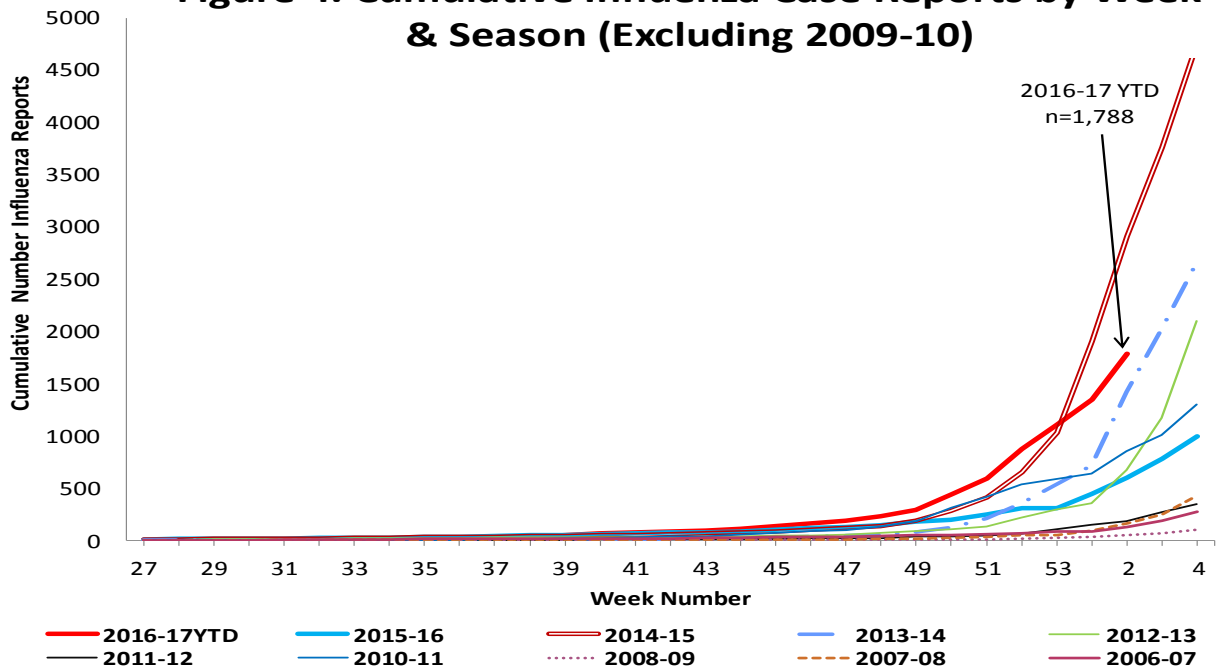


Figure 4. Cumulative Influenza Case Reports by Week & Season (Excluding 2009-10)



Influenza Watch

Figure 5. Percent of San Diego County Emergency Department Visits for Influenza-like Illness by Week and FY Compared to 5-Year Baseline & Upper 95% Threshold Values (Serfling Method)

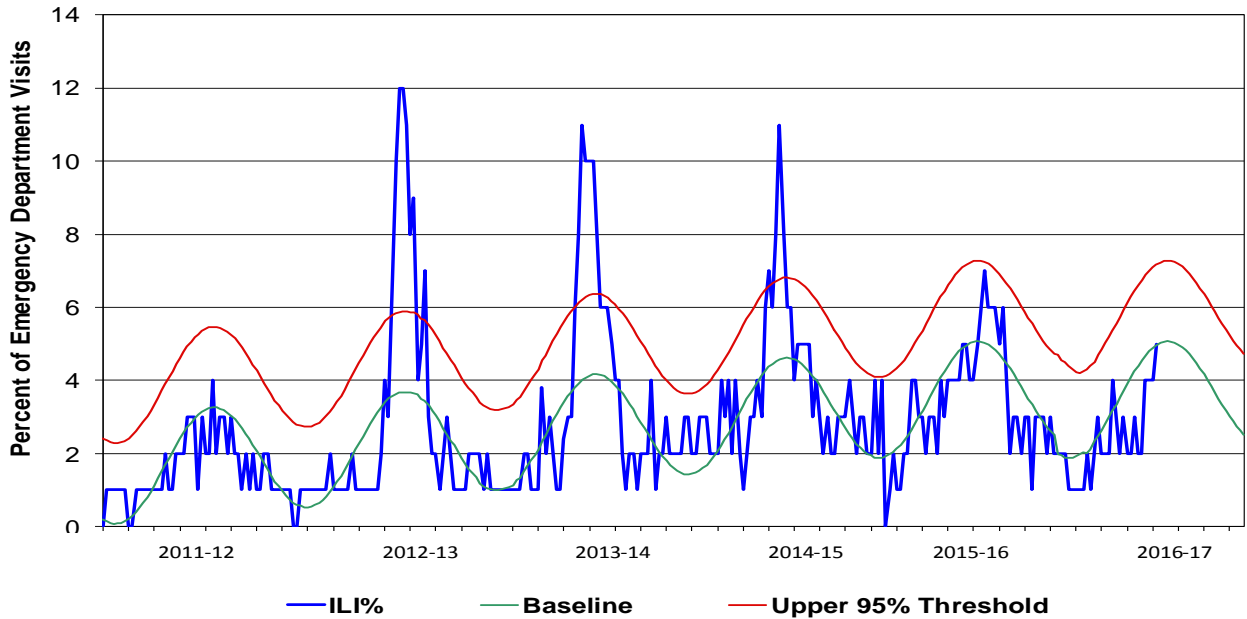
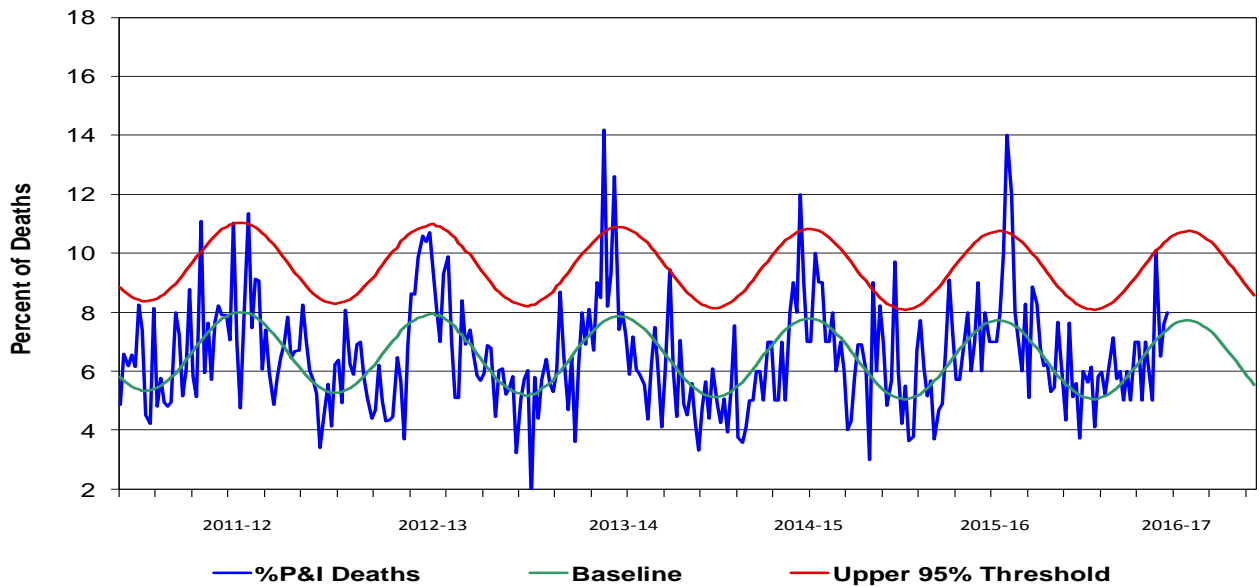


Figure 6. Percent of San Diego County Deaths Registered with Pneumonia and/or Influenza by Week and FY Compared to Prior 5-Year Baseline & Upper 95% Threshold Values (Serfling Method)



Influenza Watch

Figure 7. Influenza Deaths by Type, and Season

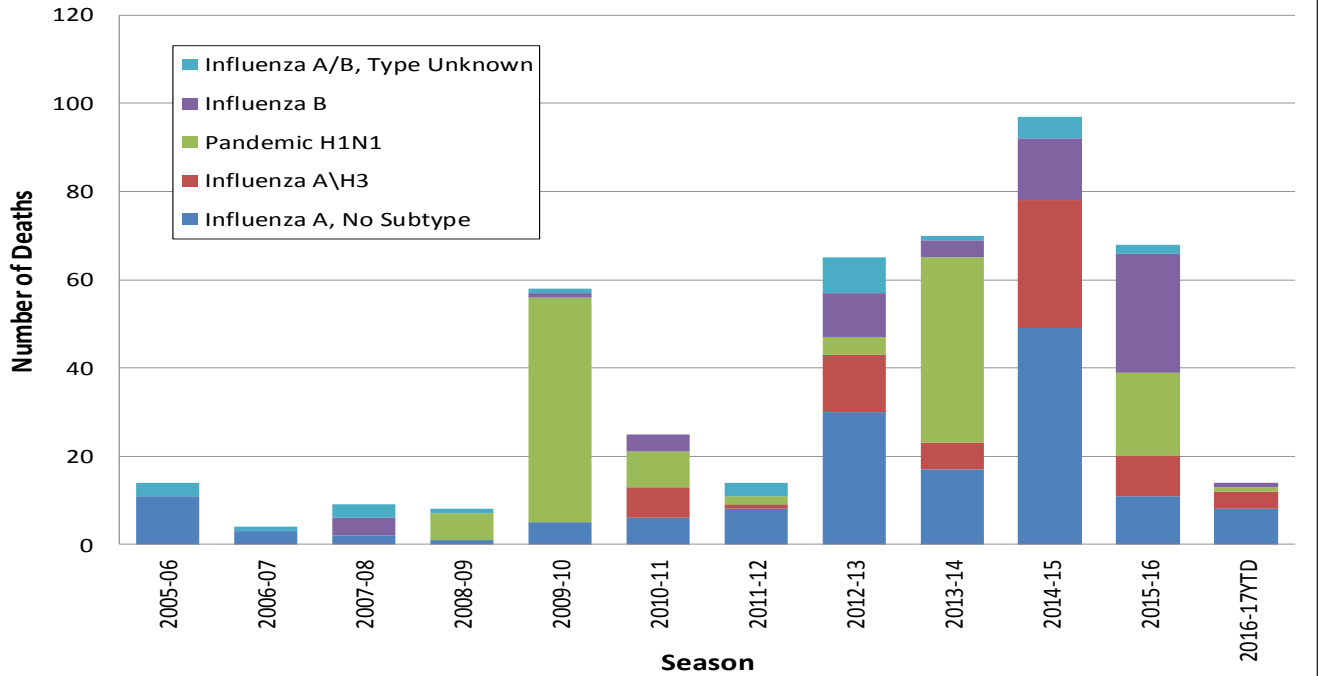


Figure 8. Influenza Deaths by Age and Season

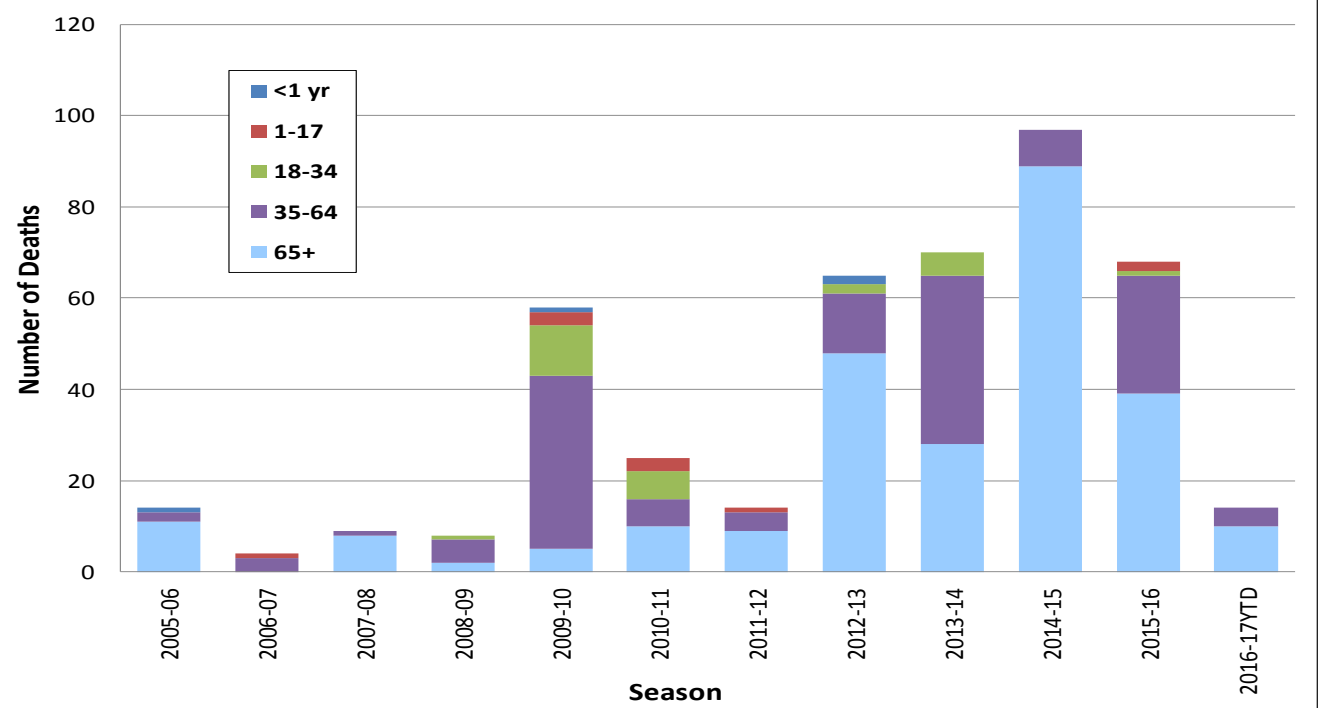
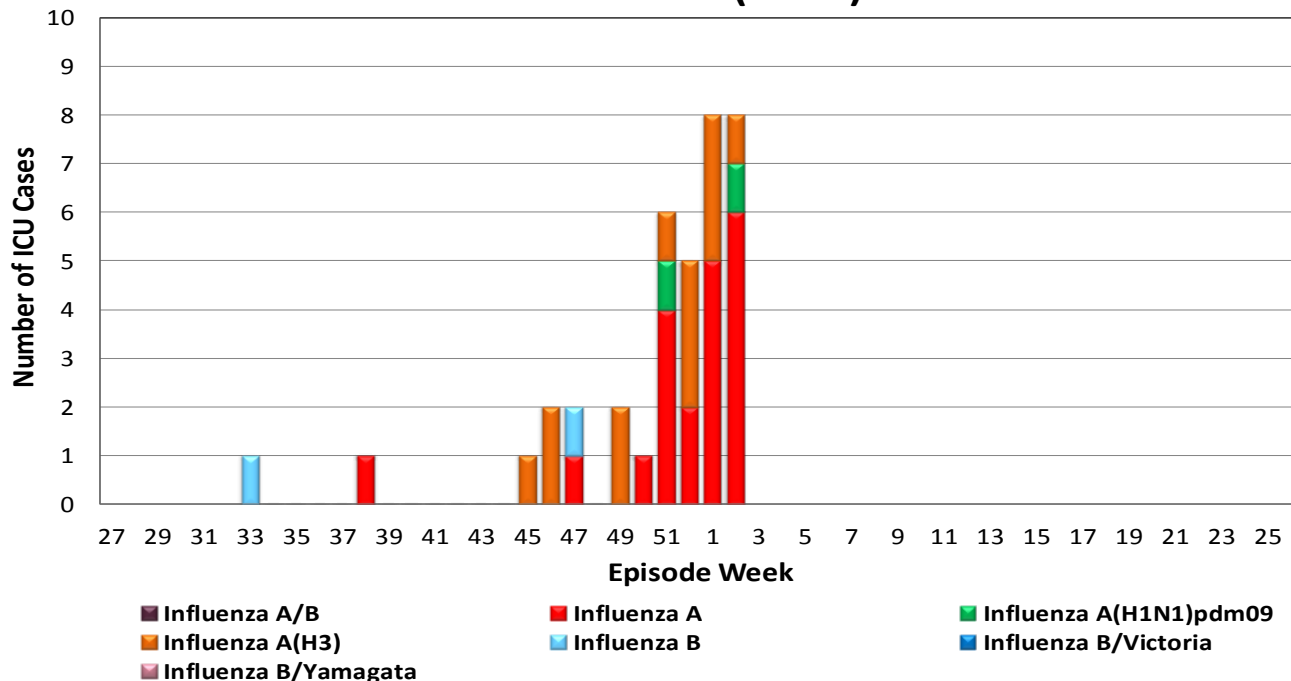


Figure 9. Number of Influenza Cases Requiring ICU Care by Episode Week and Type of Influenza, 2016-17 YTD (N=37)



Episode week is the week of symptom onset, or earliest available date in which the case is identified.

Influenza Reporting in San Diego County

Local providers are encouraged to report laboratory positive influenza detections to the County Epidemiology Program by **FAX (858) 715-6458**. Please fax a [Case Report](#) Form and/or a printed laboratory result, and indicate if the patient was admitted to ICU or died, and/or is a resident of a congregate living facility.

For questions regarding sending specimens to Public Health Laboratory (PHL), call (619) 692-8500. Click here for the updated PHL [PCR Test Request Form](#). Contact the Epidemiology Program with any questions at **(619) 692-8499** or by email to: EpiDiv.HHSA@sdcounty.ca.gov.

Resources

- San Diego County Influenza Surveillance Weekly [Slide Deck](#) - presentation version of this report
- County of San Diego Immunization Program www.sdiz.org
- California Department of Public Health [Influenza](#)
- Centers for Disease Control and Prevention Influenza Surveillance [Weekly Report](#)