

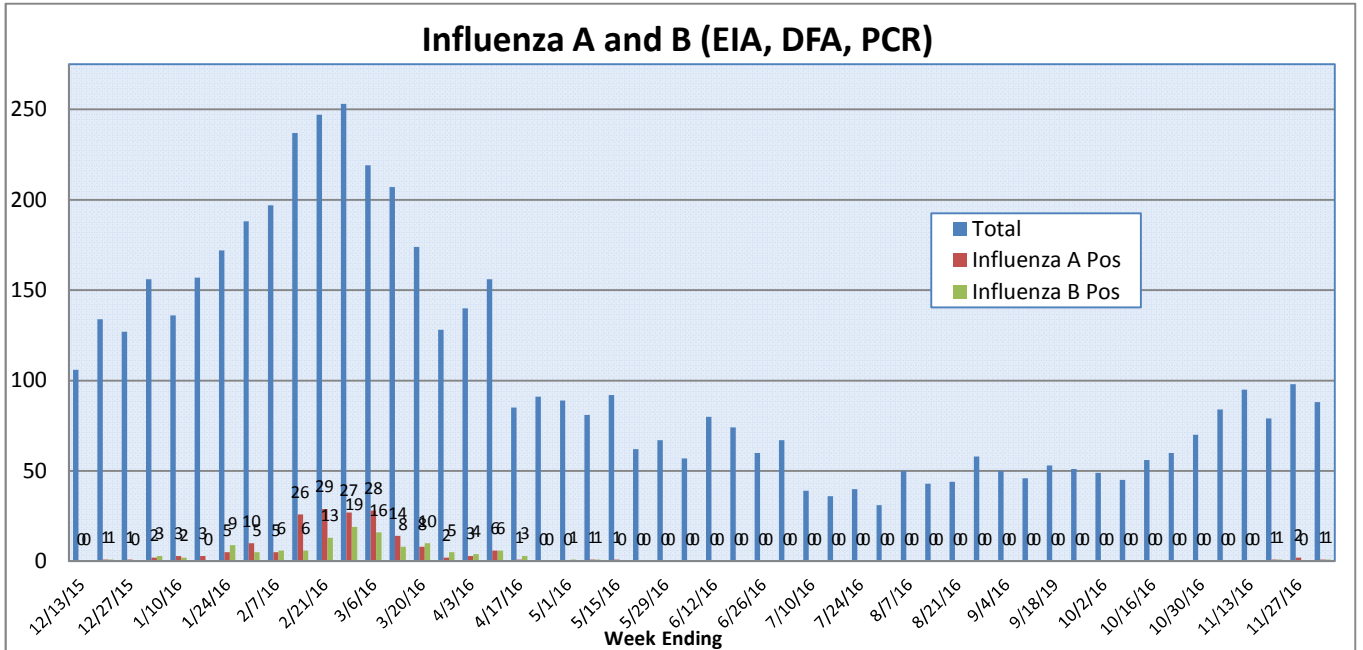
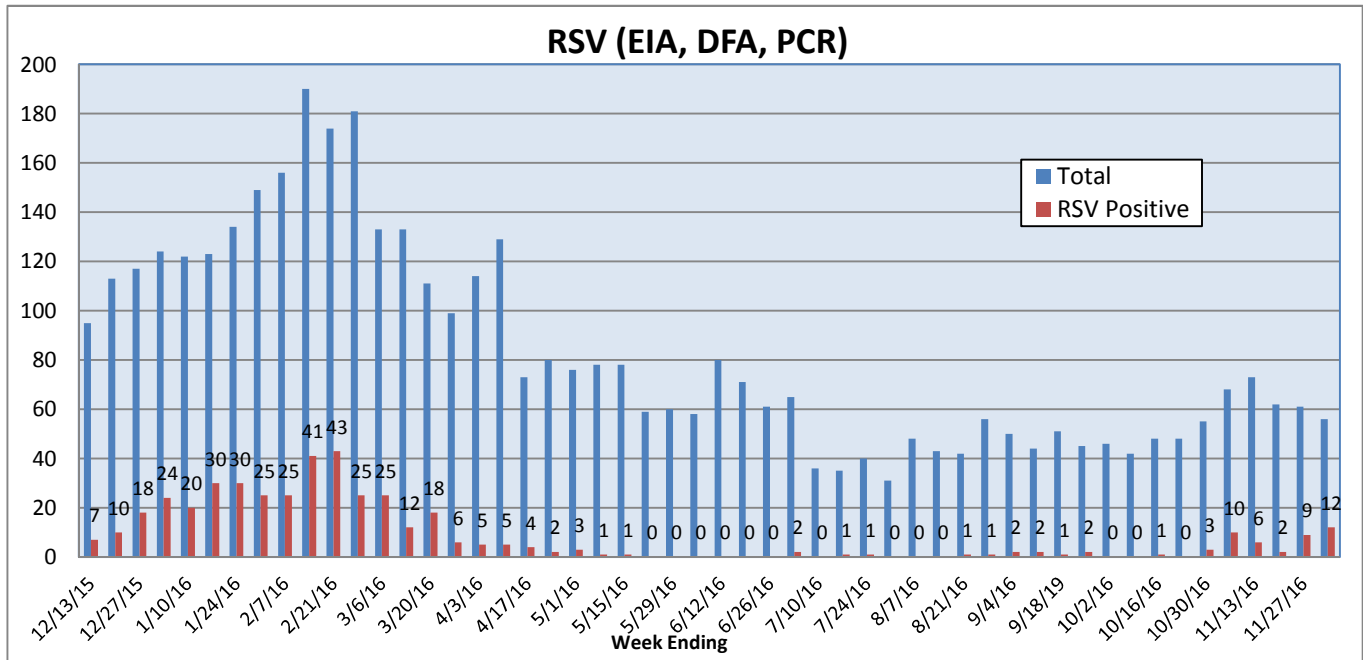
Pathogens Report

The following report is a listing of selected pathogens detected at Rady Children's Hospital Laboratory. The report includes data from adult and pediatric specimens collected locally.

November 28 - December 4, 2016

	Positive Tests Current Week	Total Tests Current Week	Positive Tests YTD*	Total Tests YTD*
RSV (DFA and PCR)	12	56	43	513
Influenza A (EIA, DFA, and PCR)	1	88	4	675
Influenza B (EIA, DFA, and PCR)	1	88	2	675
Parainfluenza (PCR and DFA)	4	56	52	496
Adenovirus (PCR and DFA)	0	56	14	496
Rhinovirus (PCR)	10	44	99	400
Metapneumovirus (PCR)	0	44	1	400
B. pertussis/parapertussis (PCR)	0	63	24	512
Enterovirus, CSF (PCR)	1	12	4	96

* From October 3, 2016.



Pathogens Report

