



# INFLUENZA WATCH

The purpose of the weekly *Influenza Watch* is to summarize current influenza surveillance in San Diego County. **Please note that reported weekly data are preliminary and may change due to delayed submissions and additional laboratory results.**

### Report Contents

- Page 1: Overview & Indicators
- Page 2: Virus Characteristics
- Pages 3-7: Trend graphs
- Page 7: Reporting Information

Current  
Week

### Current Week 49 (ending 12/10/2016)

- 61 new influenza detections reported: *Expected level*
- 2% influenza-like-illness (ILI) among emergency department visits: *Expected level*
- 0 influenza-related deaths reported this week
- 6% of deaths registered with pneumonia and/or influenza: *Expected level*

Current  
Season Summary

**291**

Total Cases

**8**

ICU Cases

**1**

Death

**3**

Outbreaks

### Virus Characteristics

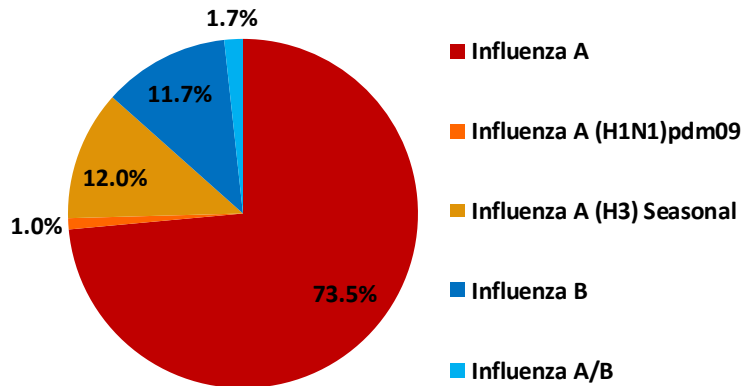


Table 1. Influenza Surveillance Indicators

Indicator	FY 2016-17*			FY 2015-16		Prior 3-Year Average**	
	Week 49	Week 48	FYTD#	Week 49	FYTD#	Week 49	FYTD#
	All influenza detections reported (rapid or PCR)	61	40	291	33	178	37
Percent of emergency department visits for ILI	2%	3%		4%		3%	
Percent of deaths registered with pneumonia and/or influenza	6%	7%		6%		6%	
Number of influenza-related deaths reported^	0	0	1	1	2	0	1

\* FYTD=Fiscal Year To Date (FY is July 1 - June 30, Weeks 27-26). Total deaths reported in prior years: 68 in 2015-16, 97 in 2014-15, and 70 in 2013-14.

^ Previous weeks case counts or percentages may change due to delayed processing or reporting.

\*\* Includes FYs 2013-14, 2014-15, and 2015-16.

^ Current FY deaths are shown by week of report; by week of death for prior FYs.

## Flu Vaccine Coverage Remains Low This Year

The Centers for Disease Control and Prevention (CDC) released information on influenza vaccination coverage estimates last week, noting that vaccination levels were low, but similar to this time last season. Key findings in the report were:

- Only two of every five children and adults in the United States were vaccinated by early November 2016: 39.8% of all persons 6 months and older; 37.3% of children 6 months through 17 years; and 40.6% of adults 18 years and older.
- Early 2016–17 flu season vaccination coverage was similar to coverage at the same time last flu season for children, adults, and all persons 6 months and older.
- Among both children and adults, early-season flu vaccination coverage showed no racial/ethnic differences.
- Among both adults and children, the most common places reported for receiving flu vaccination were medical locations (children: 85.4%, adults: 51.9%). Retail settings (24.3%) and workplaces (17.6%) were other important venues for adults.

The report concluded that people not yet vaccinated this season should get a flu vaccination as soon as possible. A provider recommendation to get a flu vaccination is an important factor in a patient’s decision to get vaccinated. Vaccination providers and immunization programs should ensure patients receive recommendations for flu vaccination and expand access to vaccination services. Work sites can collaborate with vaccination providers and immunization programs to promote flu vaccination and even offer vaccination at work.

All providers should routinely assess the flu vaccination status of their patients at every clinical encounter, strongly recommend, and offer flu vaccination. Providers who do not stock flu vaccine should refer their patients to a provider who offers flu vaccination and confirm that patients received a flu vaccination.

More information about influenza vaccination coverage so far this season may be found at: [National Early-Season Flu Vaccination Coverage, United States, November 2016](#). Final 2016–17 flu season vaccination coverage estimates will be available at [CDC FluVaxView](#) in September 2017.

**Table 2. Influenza Detections Reported, FY 2016-17\***

Positive Test Type/Subtype	Week 49	Total To-Date
Influenza A†	52	214
Influenza A(H1N1) Pandemic 2009	0	3
Influenza A (H3) Seasonal	3	35
Influenza B†	5	34
Influenza B/Victoria	0	0
Influenza B/Yamagata	0	0
Influenza A/B†	1	5
<b>Total</b>	<b>61</b>	<b>291</b>

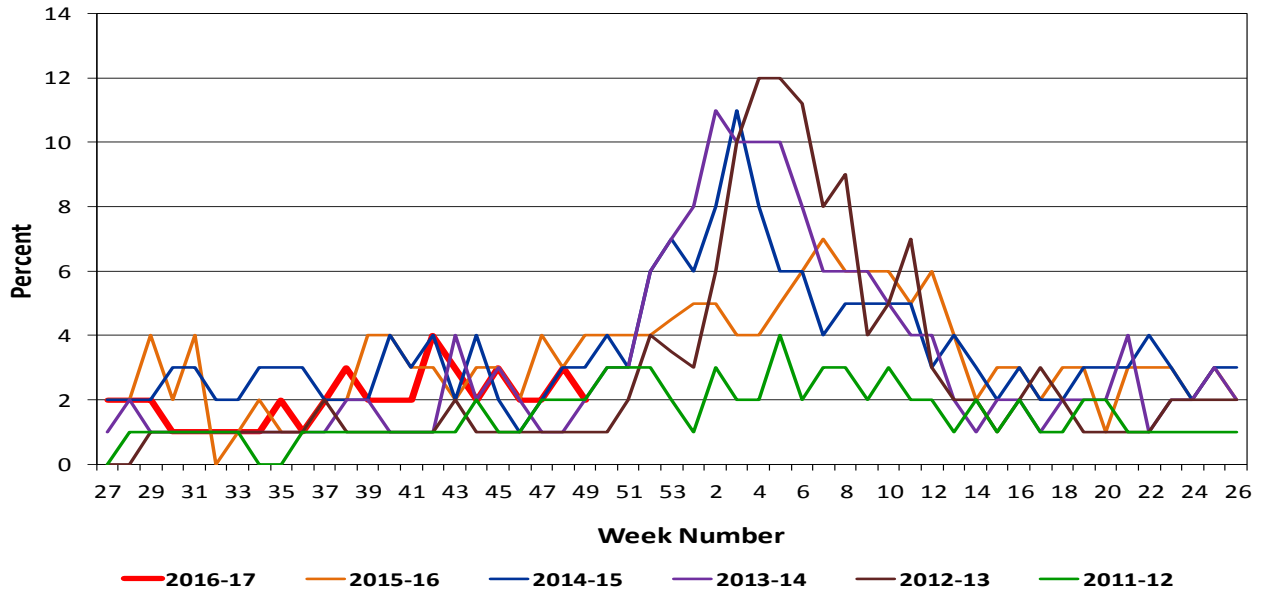
\* FY is July 1- June 30.

† No further characterization performed, or results were not yet available at time of publication.

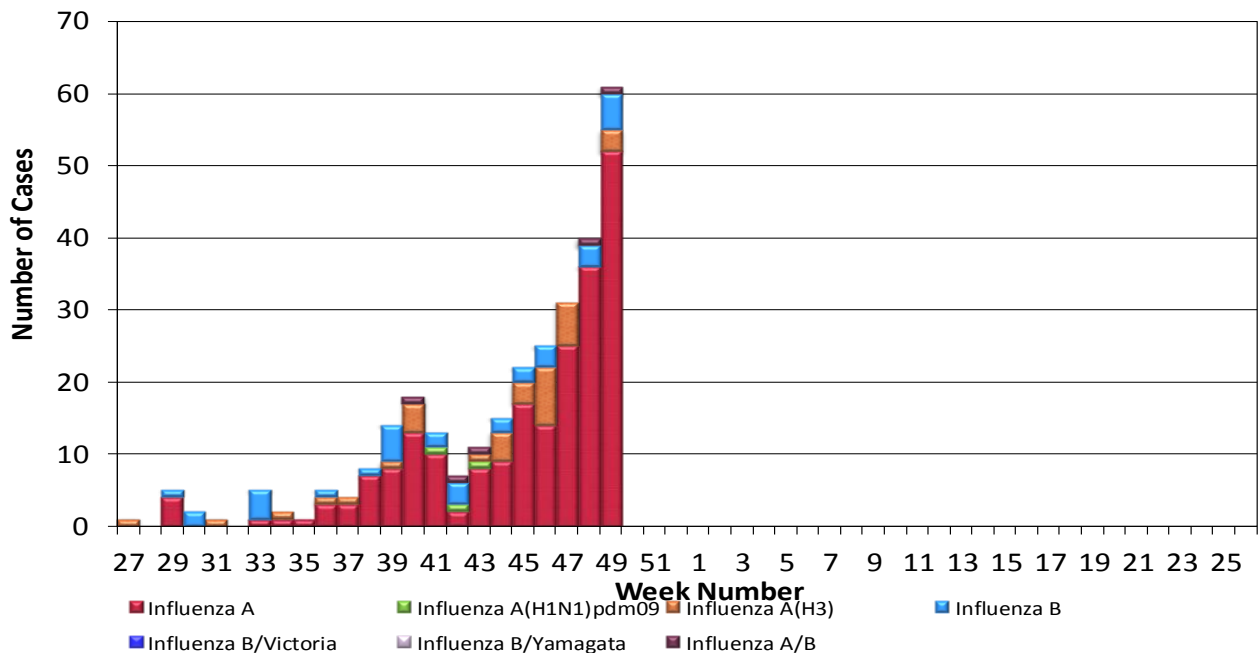
Note: Totals may change due to further laboratory findings.

# Influenza Watch

**Figure 1. Percent of Emergency Department Visits for Influenza-like Illness by Week and FY**

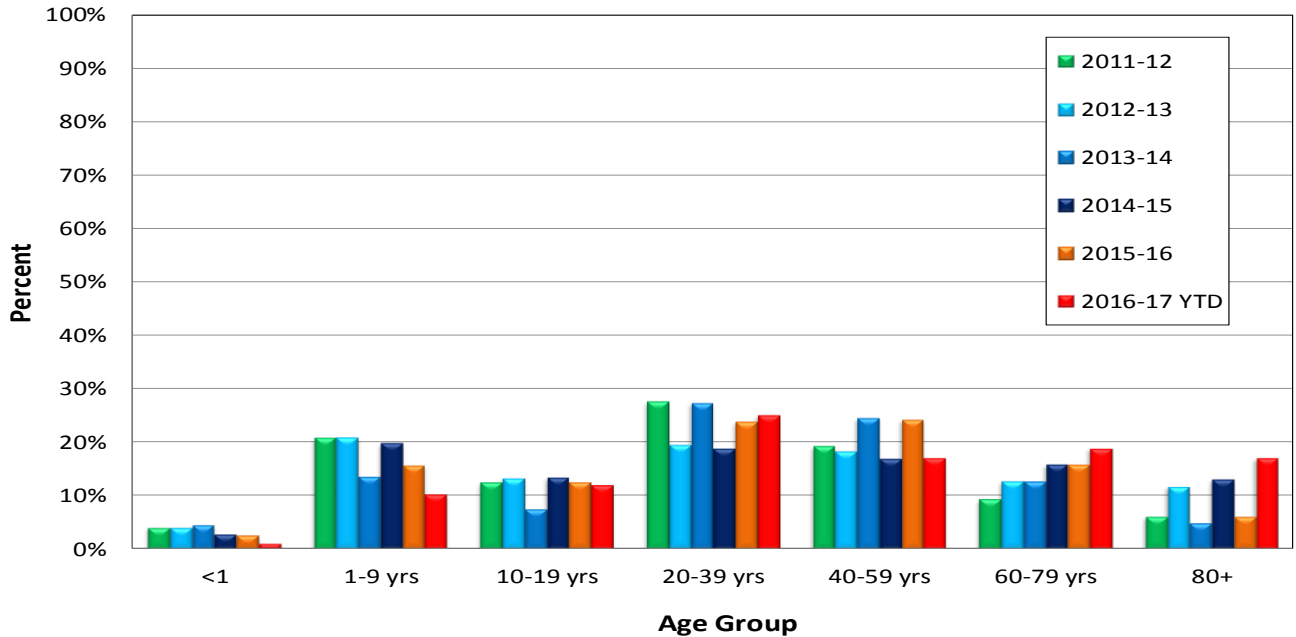


**Figure 2. San Diego County Influenza Detections by Type and Week of Report, 2016-17 (N=291)**

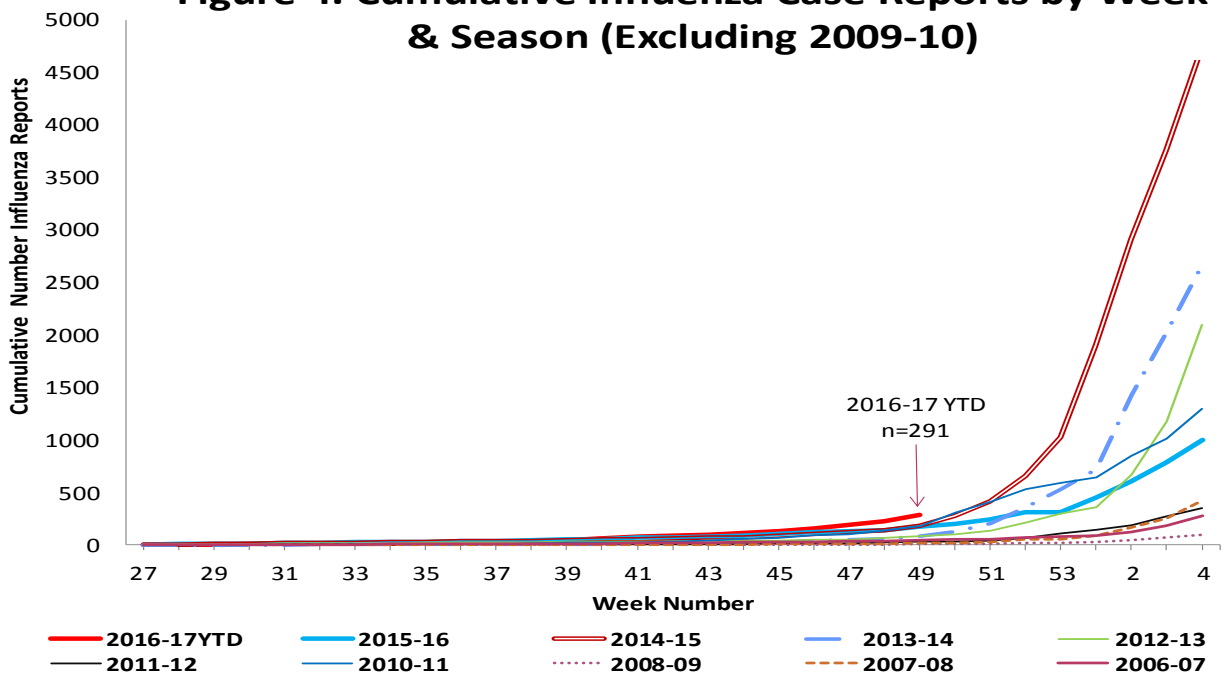


# Influenza Watch

**Figure 3. Percent of Reported Influenza Cases by Age Group and Season, 2011-12 to 2016-17 YTD**

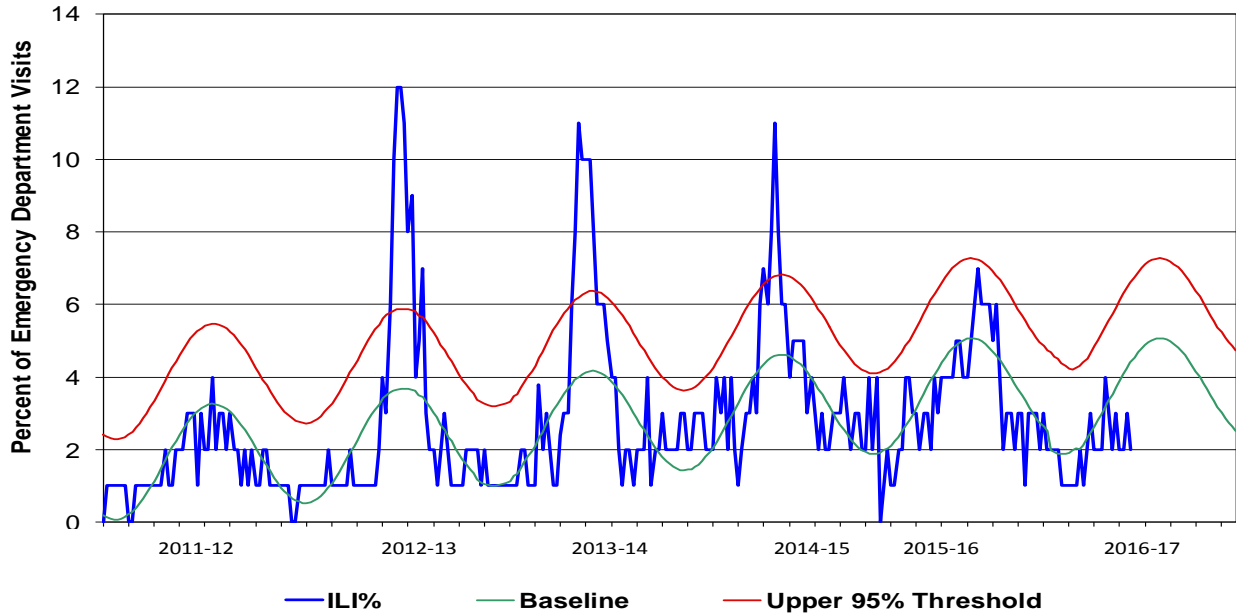


**Figure 4. Cumulative Influenza Case Reports by Week & Season (Excluding 2009-10)**

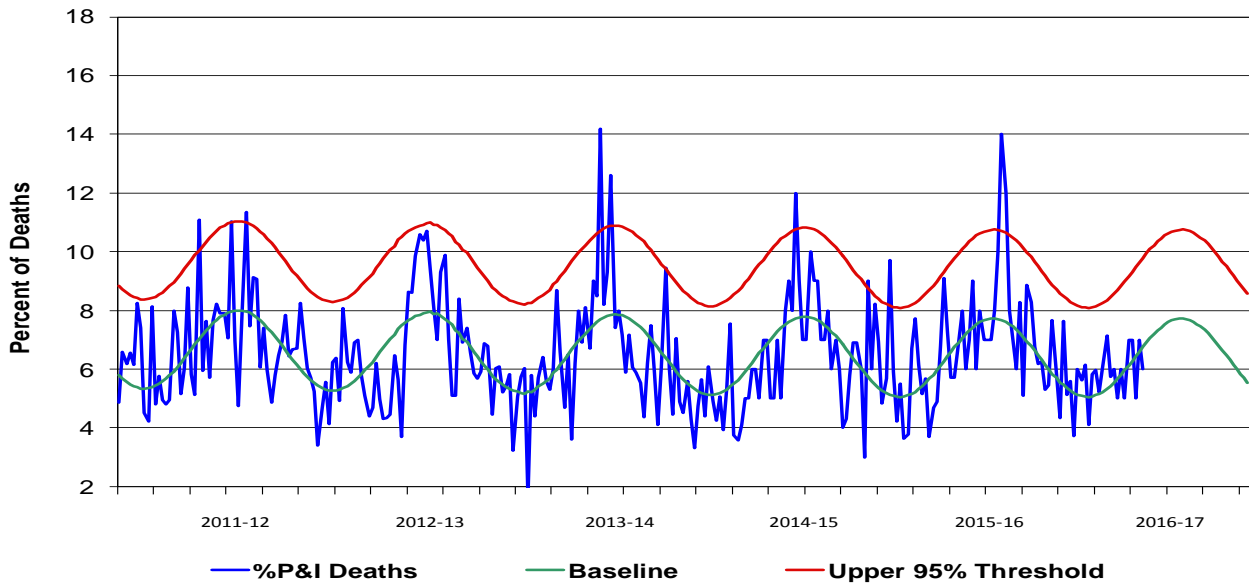


# Influenza Watch

**Figure 5. Percent of San Diego County Emergency Department Visits for Influenza-like Illness by Week and FY Compared to 5-Year Baseline & Upper 95% Threshold Values (Serfling Method)**

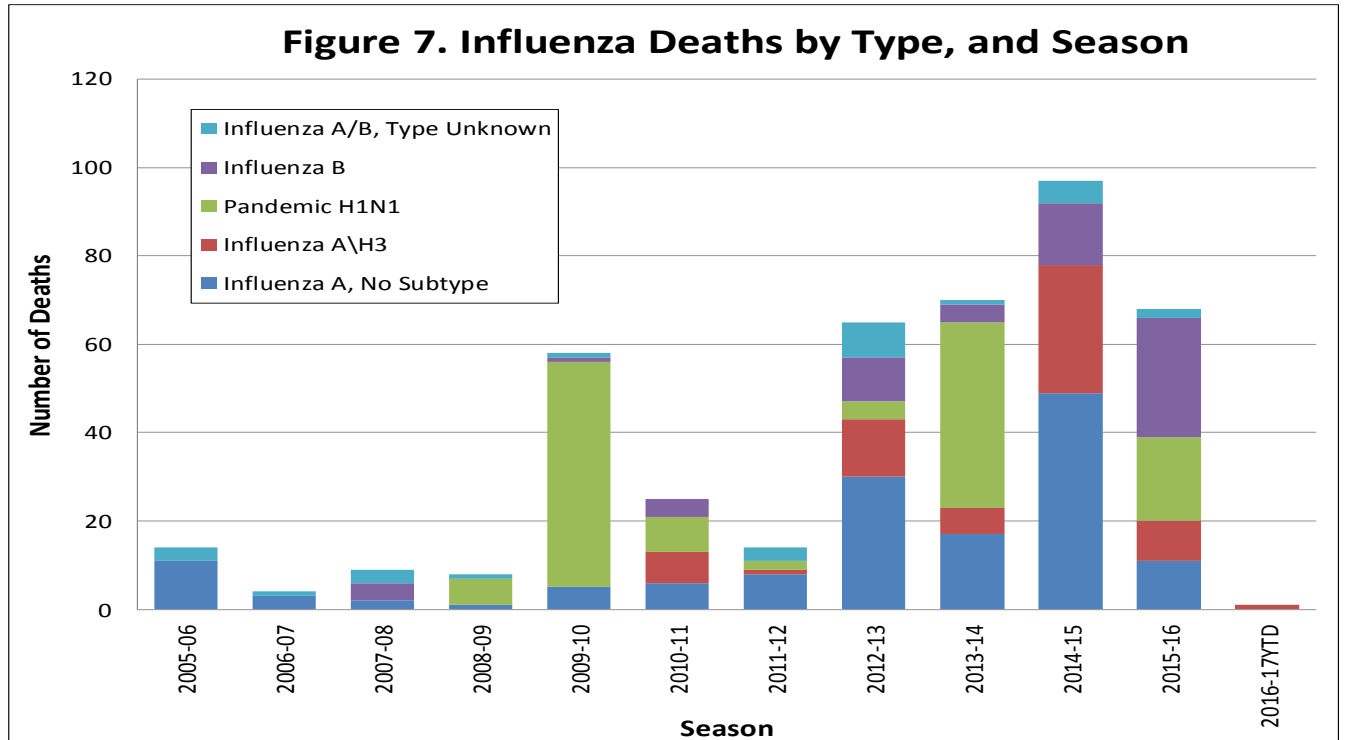


**Figure 6. Percent of San Diego County Deaths Registered with Pneumonia and/or Influenza by Week and FY Compared to Prior 5-Year Baseline & Upper 95% Threshold Values (Serfling Method)**

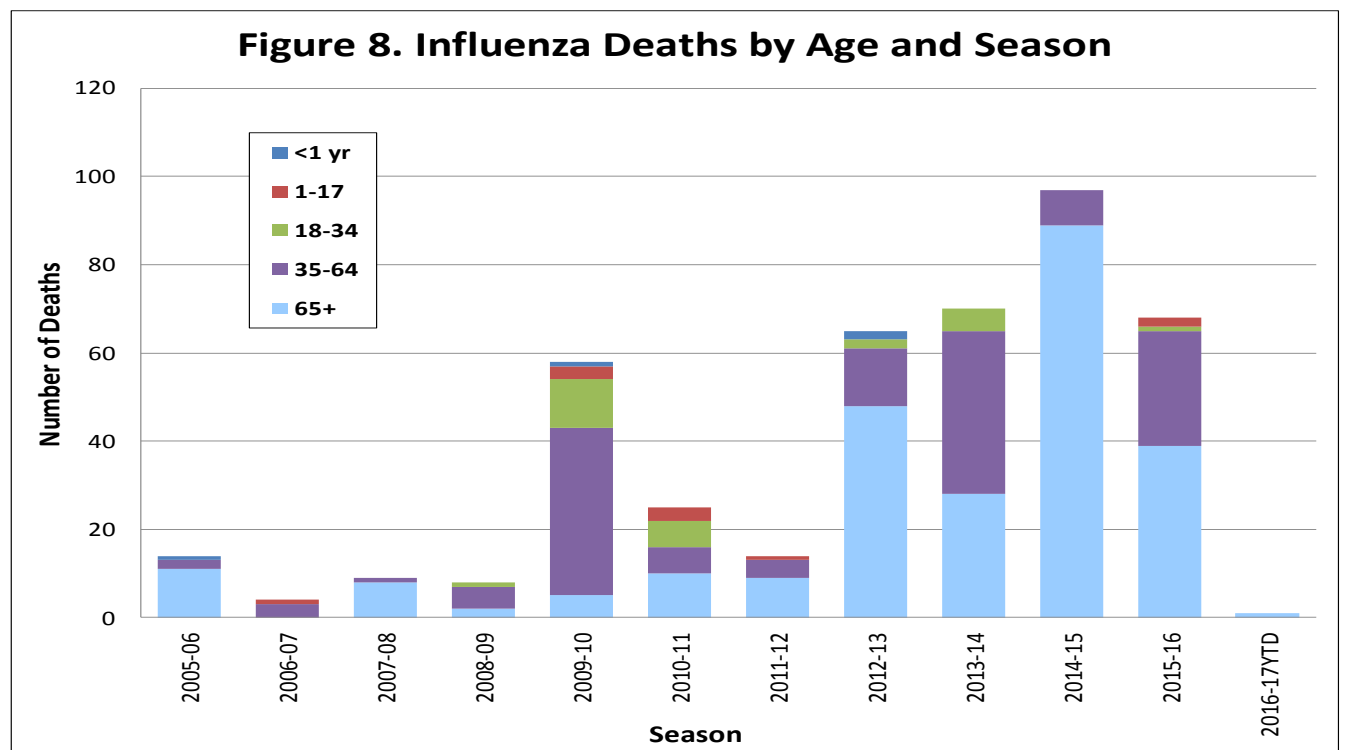


# Influenza Watch

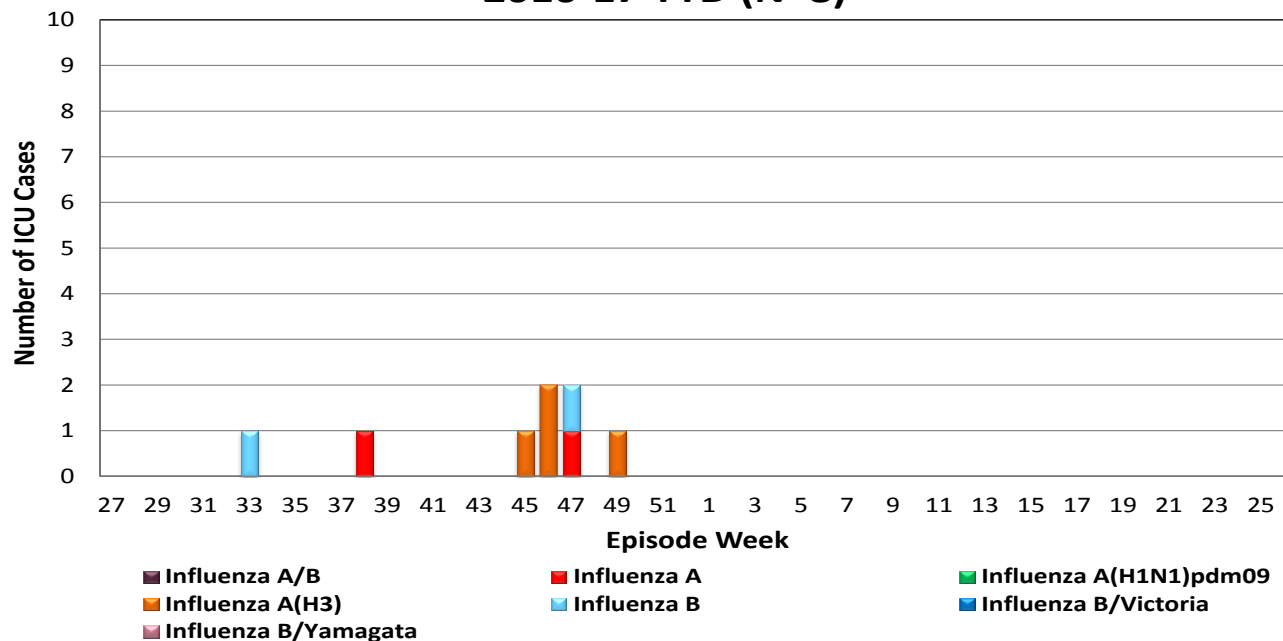
**Figure 7. Influenza Deaths by Type, and Season**



**Figure 8. Influenza Deaths by Age and Season**



**Figure 9. Number of Influenza Cases Requiring ICU Care by Episode Week and Type of Influenza, 2016-17 YTD (N=8)**



Episode week is the week of symptom onset, or earliest available date in which the case is identified.

## Influenza Reporting in San Diego County

Local providers are encouraged to report laboratory positive influenza detections to the County Epidemiology Program by **FAX (858) 715-6458**. Please fax a [Case Report](#) Form and/or a printed laboratory result, and indicate if the patient was admitted to ICU or died, and/or is a resident of a congregate living facility.

For questions regarding sending specimens to Public Health Laboratory (PHL), call (619) 692-8500. Click here for the updated PHL [PCR Test Request Form](#). Contact the Epidemiology Program with any questions at **(619) 692-8499** or by email to: [EpiDiv.HHSA@sdcounty.ca.gov](mailto:EpiDiv.HHSA@sdcounty.ca.gov).

### Resources

San Diego County Influenza Surveillance Weekly [Slide Deck](#) - presentation version of this report

County of San Diego Immunization Program [www.sdiz.org](http://www.sdiz.org)

California Department of Public Health [Influenza](#)

Centers for Disease Control and Prevention Influenza Surveillance [Weekly Report](#)